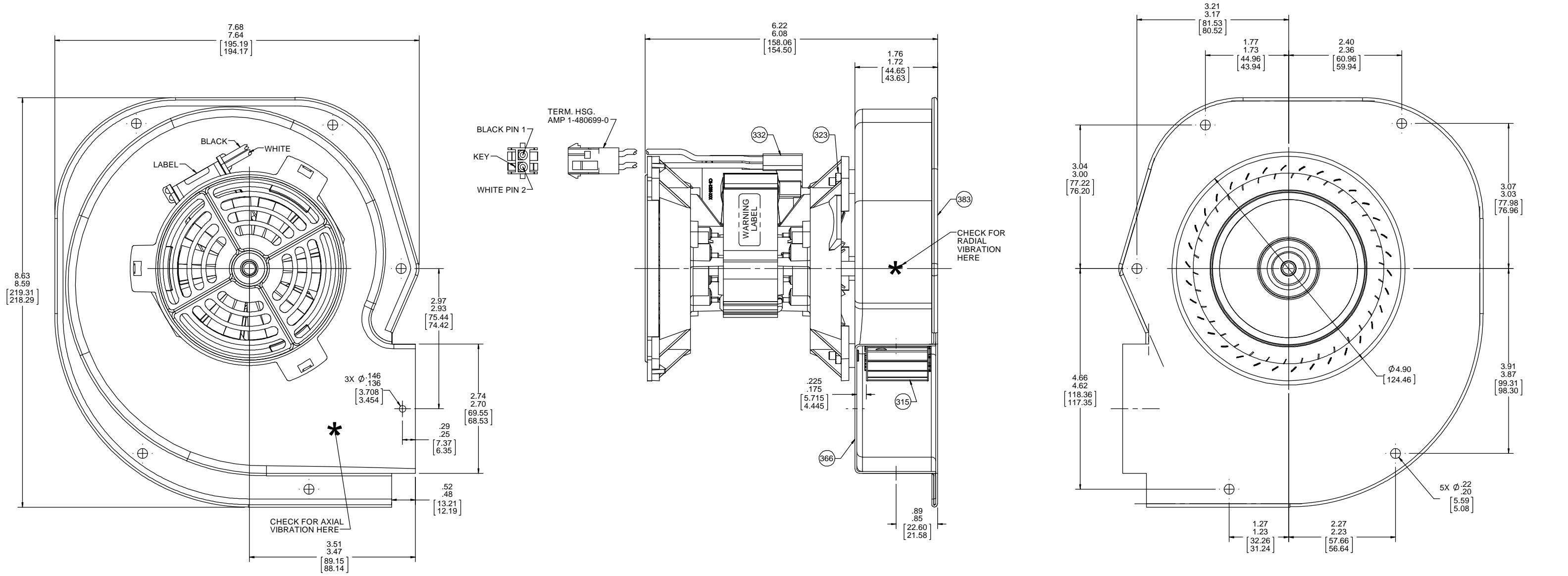


THERMALLY PROTECTED  
CLASS 'B' INSULATION  
SEALED BALL BEARING  
416 SS SHAFT

APPLICATION:	GAS FURNACE DRAFT INDUCER	B	LA	FR	A	S	C	E	B	A
CUSTOMER:	FASCO DIST.	GS	58	48	X	17	BE	5	0	0
CUSTOMER PN:	A361									

LEAD MATERIAL  
18 GA. 125°C 2/64 INSUL.  
X-LINKED POLY.  
(1) WHITE AND (1) BLACK  
6.50/5.50 [165.10/139.70]  
TO BACK OF TERM. HSG.  
W/PIN TERM.  
AMP 350218-1

- NOTES:
- NO STA-LOC REQUIRED ON IMPELLER.
  - 100% HYPOT 1500 V FOR 1 SEC.
  - INSPECTION TEST FIXTURE REQUIRED.
  - 100% RUN WITH 1 5/16" INLET RESTRICTOR AND TEST FOR AMP DRAW.
  - AUDIT VIBRATION PERIODICALLY TO INSURE .0015 MAX. DISPLACEMENT.
  - PACK 1 PER CONTAINER, 9 CONTAINERS PER LAYER, 4 LAYERS PER PALLET, 36 MAX. PER PALLET. PACKING ASSY. 87854752 PER 88834200.
  - PLACE ONE FILLER ON PALLET, PLACE ONE FILLER PAD BETWEEN EACH LAYER AND ONE ON TOP OF PALLET LOAD.
  - CARTON LABELS MUST ALL FACE ONE DIRECTION TOWARD THE OPEN END OF THE PALLET. SEE 88834408.
  - NO PACKAGING TAPE OVER CARTON LABEL.



TYPICAL PERFORMANCE TEST DATA WITH 1 5/16" INLET RESTRICTOR			
AT 115 VOLTS 60 Hz			
	RPM	WATTS	AMPS
	3240	62	1.12
<b>BLOWER WEIGHT</b>	5 LBS.		
			<b>ENDPLAY</b> .XX/XX

DRAWING REVISION AA	REVISION BY BAA	DATE 2/14/2018	TOLERANCES UNLESS OTHERWISE SPECIFIED: DEC. INCH mm ANGLE ±1°	DRAWN BY BAA	DATE 2/14/2018	DESCRIPTION OUTLINE BLOWER ASSY
ECO-0139662	APPROVED BY KSA	DATE 2/14/2018	.X ±0.1 [±2.5] .XX ±0.01 [±0.25] .XXX ±0.005 [±0.127] XXXX ±0.0005 [±0.0127]	APPROVED BY KSA	DATE 2/14/2018	MATERIAL PROCESS/FINISH NATURAL
REDRAWN TO SOLID WORKS			REMOVE BURRS & BREAK SHARP EDGES: .003/.015 [0.076/.381] X 45° CORNER FILLETS: R.02 [51]	REFERENCE	THIRD ANGLE PROJECTION	SIZE DRAWING NUMBER 70581313
BLOWER WEIGHT 5 LBS.			MACHINED SURFACES: 125 INCR/ MIL			SHEET 1 OF 1

