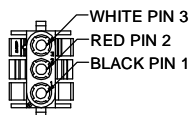


- NOTES:
- 100% HIPOT 1500V FOR 1 SECOND.
 - 100% RUN, WITH 1/5/16 INLET RESTRICTOR AND TEST FOR AMP DRAW.
 - AUDIT VIBRATION PERIODICALLY TO INSURE .0015 MAX. DISPLACEMENT.
 - NO STA-LOC REQUIRED ON IMPELLER.
 - INSPECTION TEST FIXTURE REQUIRED.
 - PACK 1 PER CONTAINER, 9 CONTAINERS PER LAYER, 3 LAYERS PER PALLET, 27 MAX. PER PALLET, PACKING ASSY. 87854915, PER 88834200 AND 88834408.
 - CARTON LABELS MUST ALL FACE ONE DIRECTION TOWARD THE OPEN END OF THE PALLET.
 - NO PACKING TAPE OVER CARTON LABEL.

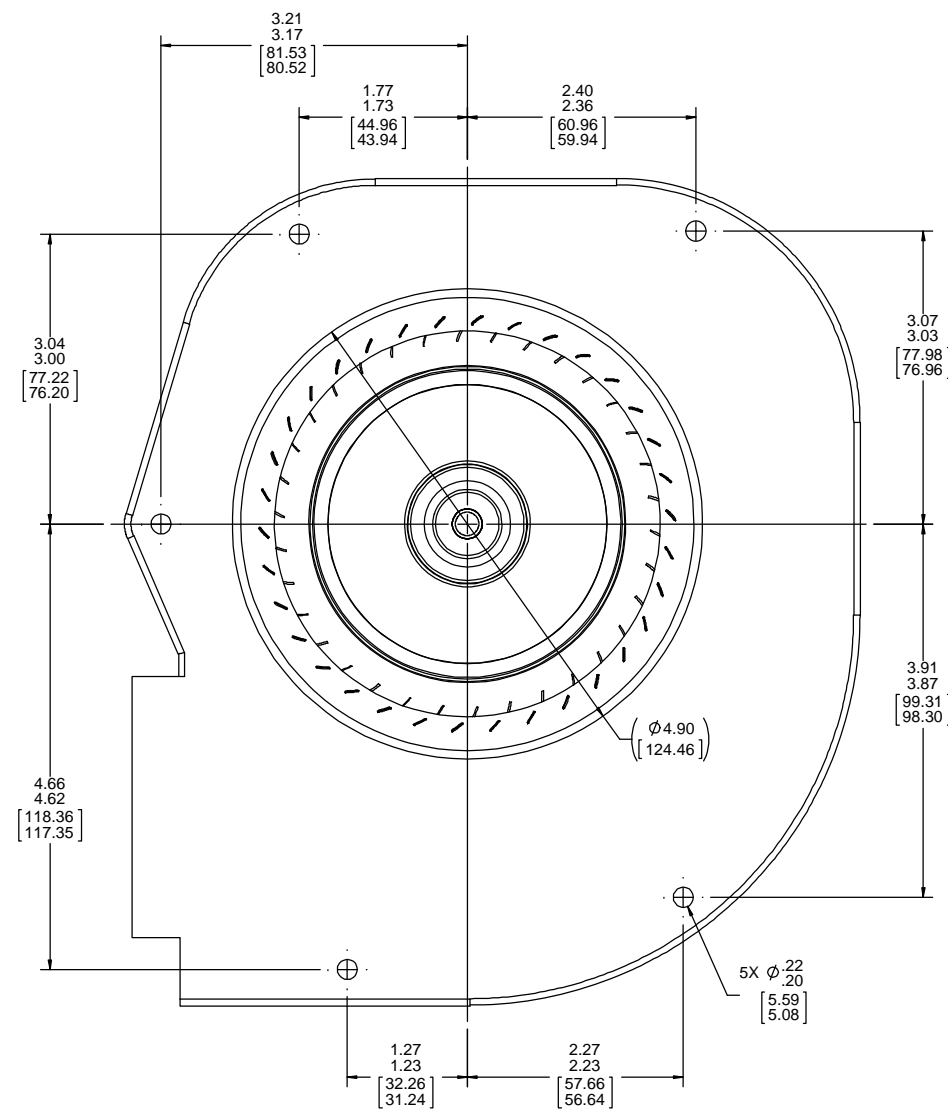
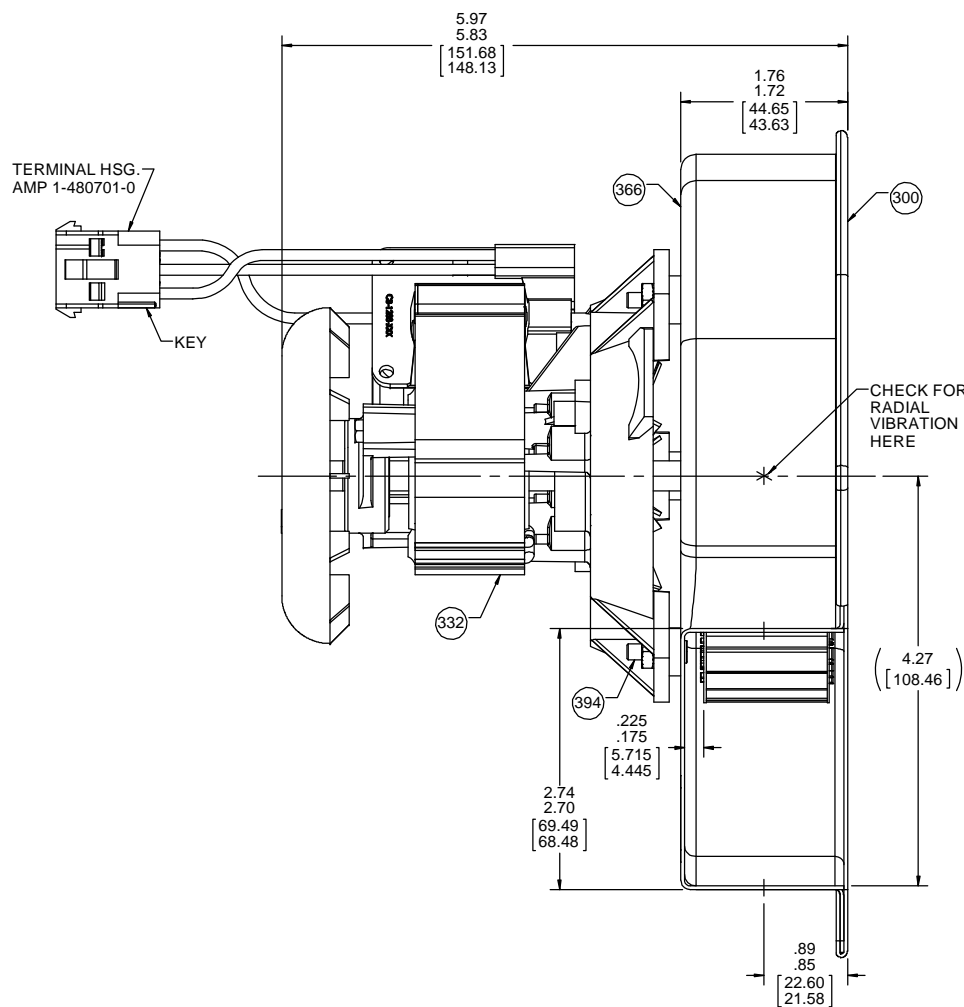
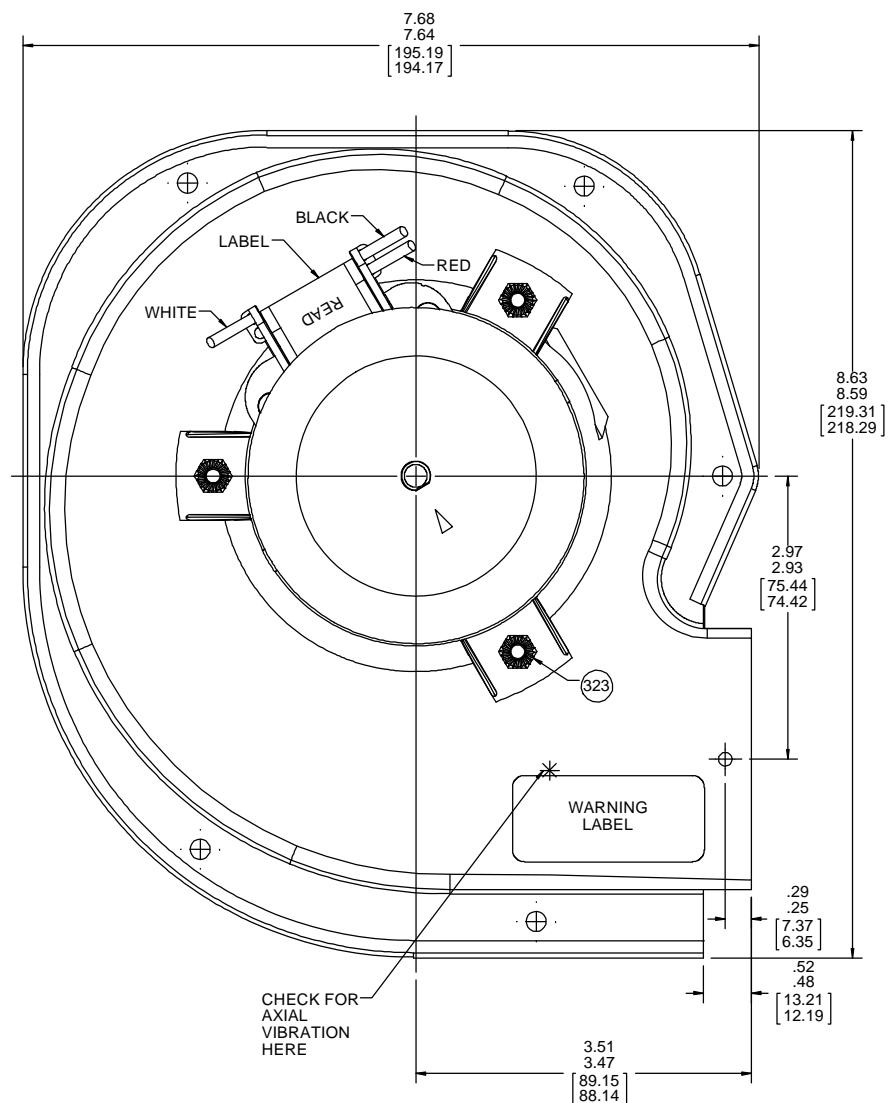


CONNECTION DIAGRAM
 WHT — COMMON
 BLK — HIGH
 RED — LOW

THERMALLY PROTECTED
 CLASS "B" INSULATION
 SEALED BALL BEARING
 416 SS SHAFT

APPLICATION:	GAS FURNACE	B	LA	FR	A	S	C	E	B	A
CUSTOMER:	FASCO DIST.	GS	58	48	X	17	CO	6	0	0
CUSTOMER PN:	A360									

LEAD MATERIAL
 18 GA. 125°C 2/64 INSUL.
 X-LINKED POLY. BLACK,
 WHITE, AND RED
 6.50/5.50 [165.10/139.70]
 TO BACK OF TERMINAL HSG.
 W/ PIN TERMINALS
 AMP 350218-1



61305568

SAFETY WARNING
 This motor must be grounded in accordance with local or national electrical codes to prevent possible injury due to electrical shock.

AVERTISSEMENT DE SÉCURITÉ
 Ce moteur doit être fondée sur conformément à la réglementation locale ou national électrique codes pour prévenir d'éventuelles blessures en raison de choc électrique.

TYPICAL PERFORMANCE TEST DATA
 WITH 1/5/16" INLET RESTRICTOR
 AT 115 VOLTS 60 Hz

	RPM	WATTS	AMPS
HIGH	2900	61	.91
LOW	2100	36	.52
BLOWER WEIGHT	5 LBS.		ENDPLAY .XX/XX

DRAWING REVISION AA	REVISION BY SDM	DATE 7/20/2017	TOLERANCES UNLESS OTHERWISE SPECIFIED: DEC. INCH mm ANGLE ±1°	DRAWN BY SDM	DATE 7/20/2017	DESCRIPTION OUTLINE BLOWER ASSY
ECO-0127829	APPROVED BY SED	DATE 7/20/2017	XXX ±0.01 [±0.25]	APPROVED BY SED	DATE 7/20/2017	MATERIAL PROCESS/FINISH NATURAL
CHANGE WARNING LABEL TO 61305568			REMOVE BURRS & BREAK SHARP EDGES: .003/.015 [0.076/.381] X 45°	REFERENCE	THIRD ANGLE PROJECTION	SIZE DRAWING NUMBER 70581397
<small>PROPRIETARY AND CONFIDENTIAL INFORMATION - THIS DOCUMENT IS THE PROPERTY OF REGAL BELOIT AMERICA, INC. CONSENT AND CONFIRMATION OF OWNERS PROPRIETARY INFORMATION, ANY PERSON, CORPORATION OR OTHER FIRM RECEIVING IT IS DEEMED, BY RECEIVING IT, TO AGREE THAT IT, AND/OR ANY PART OF IT, SHALL NOT BE DISCLOSED TO ANY PERSON, CORPORATION OR OTHER ENTITY, DUPLICATED, AND/OR USED, EXCEPT AS EXPRESSLY APPROVED IN WRITING IN ADVANCE BY OWNER. THIS DOCUMENT SHALL BE RETURNED TO OWNER UPON REQUEST. IT MAY BE SUBJECT TO CERTAIN RESTRICTIONS UNDER APPLICABLE EXPORT CONTROL LAWS AND REGULATIONS.</small>			mm SHOWN IN [BRACKETS]			SHEET 1 OF 1

Regal Beloit America, Inc.