

THERMALLY PROTECTED
SEALED BALL BEARING
CLASS B INSULATION
416 SS SHAFT

APPLICATION:		B	LA	FR	A	S	C	E	B	A
CUSTOMER:	FASCO DIST.	12	62	47	V	05	EE	5	0	0
CUSTOMER PN:	A331									

- NOTES:
1. STATIC TAP TO BE TIGHT AND SECURELY FASTENED.
 2. NO STA-LOC REQUIRED ON IMPELLER.
 3. STATIC TAP READING IS TO BE -1.50° CORRECTED TO STANDARD AIR (0.075 LB/FT³) WITH A 1 5/16 INLET RESTRICTOR.
 4. PACK 1 PER CONTAINER, 64 MAX. PER PALLET, 16 CONTAINERS PER LAYER, 4 LAYERS PER PALLET. PACK ASSY: 87854335 PER 88834200 AND 88834408.
 5. INSPECTION TEST FIXTURING IS REQUIRED.
 6. CRITICAL TO FUNCTION DIMENSIONS. INSPECT FOR COMPLIANCE.
 7. CAPACITOR RATING: 4 MFD/370 VAC.
 8. CARTON LABELS MUST ALL FACE ONE DIRECTION TOWARD THE OPEN END OF THE PALLET. SEE 88834408.
 9. NO PACKAGING TAPE OVER CARTON LABEL.
 10. BLOWER - NATURAL, MOTOR - FLAT BLACK.

61305568

SAFETY WARNING
This motor must be grounded in accordance with local or national electrical codes to prevent possible injury due to electrical shock

AVERTISSEMENT DE SÉCURITÉ
Ce moteur doit être fondé sur conformément à la réglementation locale ou nationale électrique codes pour prévenir d'éventuelles blessures en raison de choc électrique

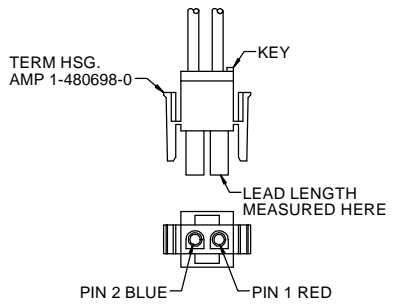
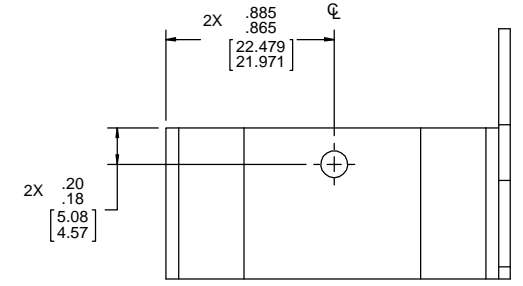
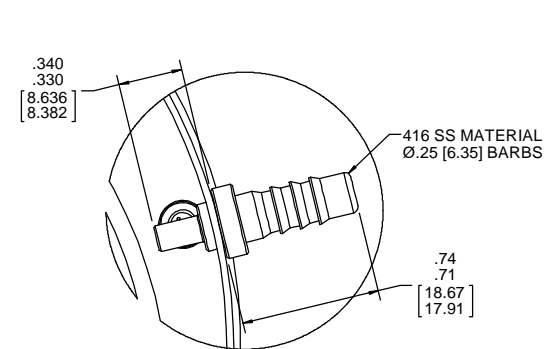
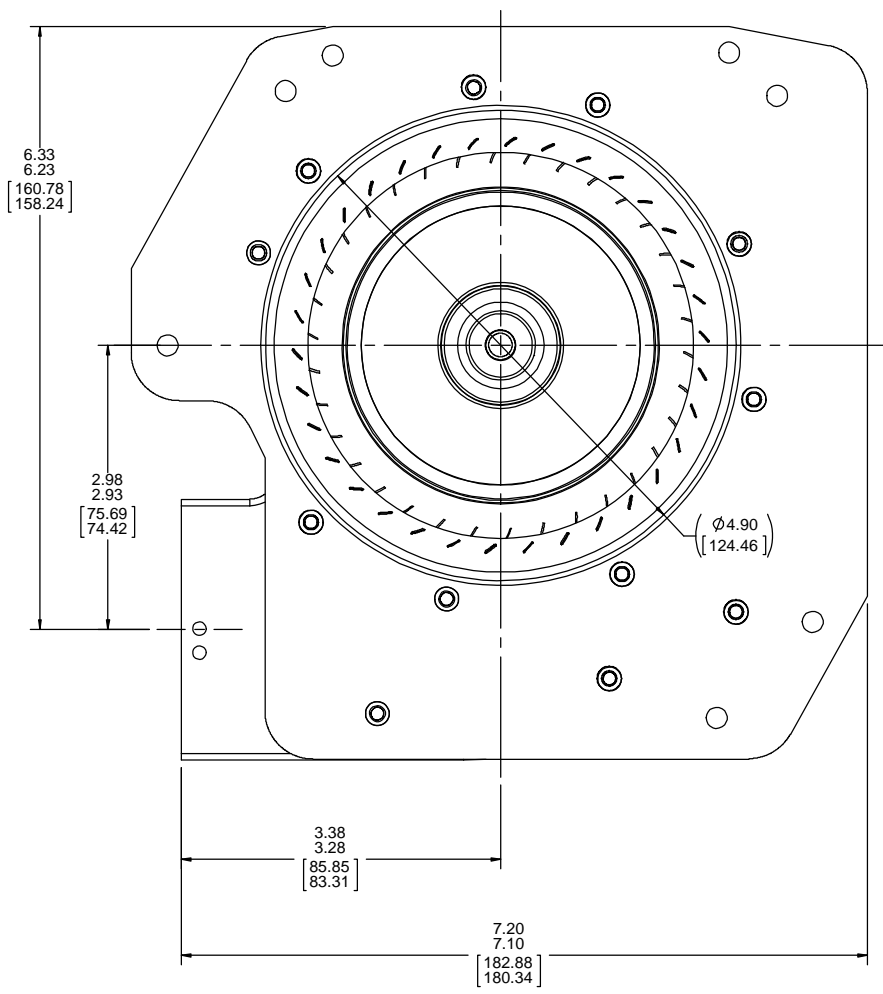
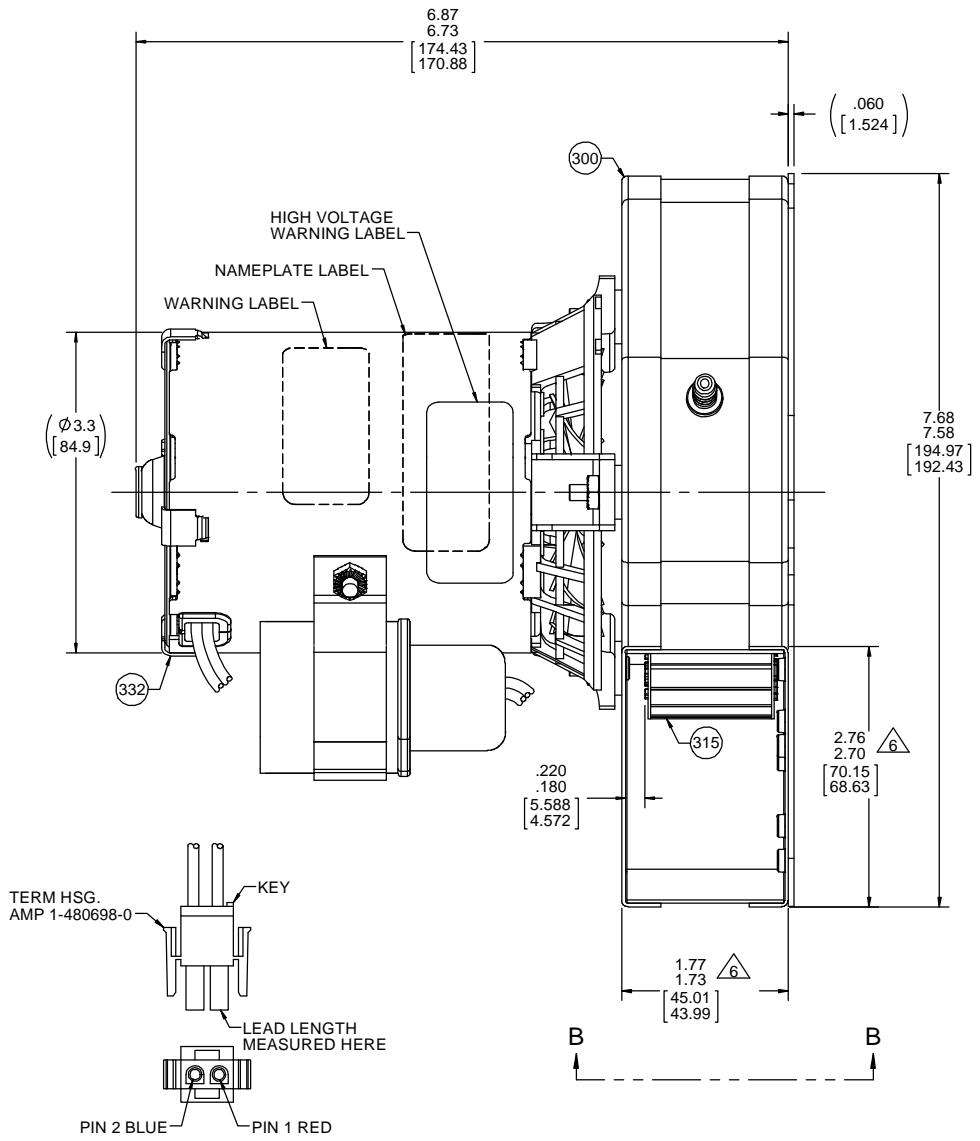
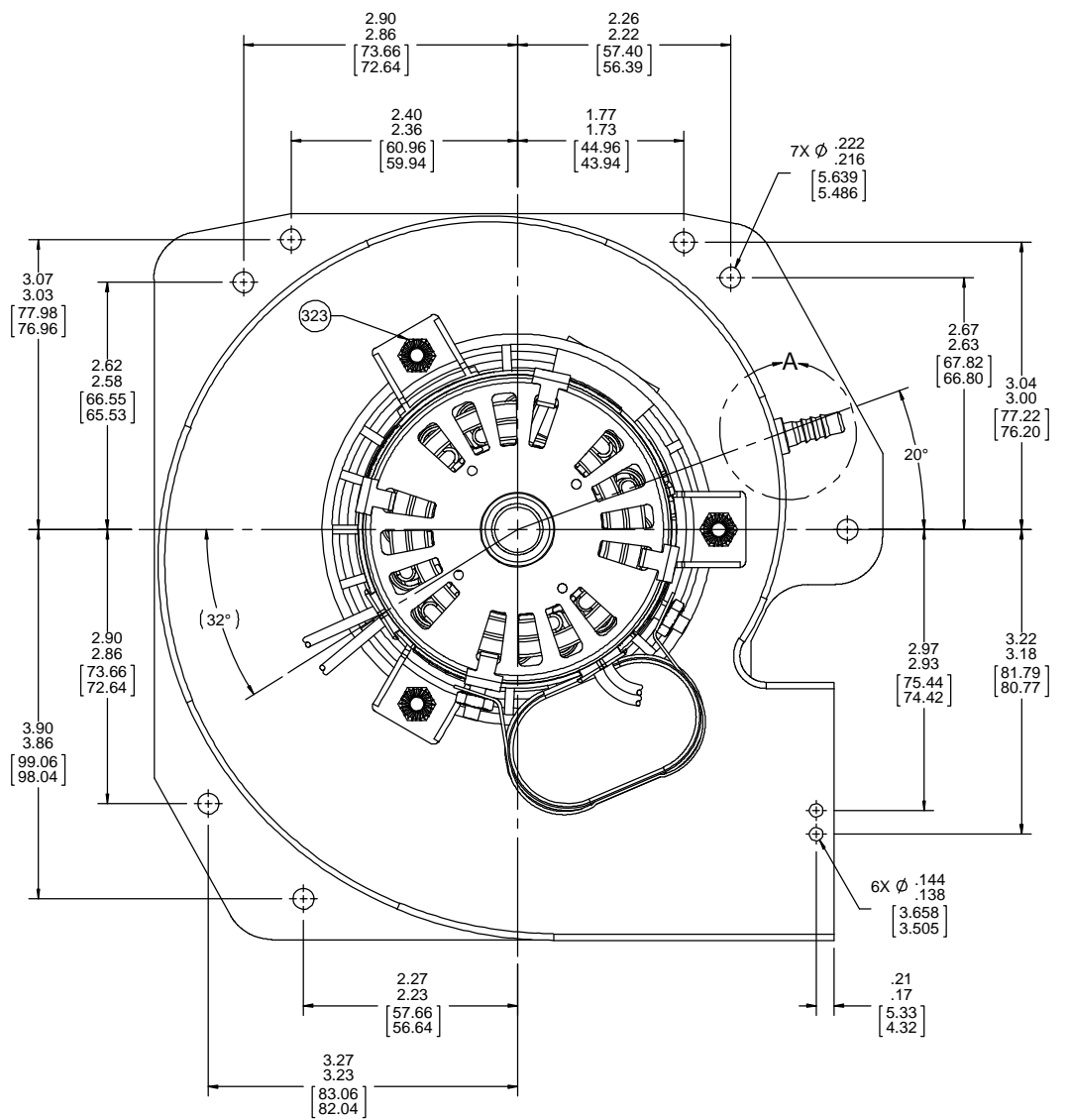
61294176

WARNING

WHEN OPERATED ON 460 V. SPECIAL CARE SHOULD BE TAKEN WITH HANDLING, CONNECTIONS AND GROUNDING TO AVOID SHOCK HAZARD.

LEAD MATERIAL
18 GA. 125°C 2/64 INSUL.
X-LINKED POLY
RED, BLUE
21.00 / 19.00 [533.40 / 482.60]
W / PIN TERM. AMP 350218-1

CAPACITOR LEADS
(2) BROWN
7.00 / 5.00 [177.80 / 127.00]
W / FFLAG TERM. AMP 42742-2



TYPICAL PERFORMANCE TEST DATA
WITH A 1 5/16 INLET RESTRICTOR
AT 460 VOLTS 60 Hz

	RPM	WATTS	AMPS
	3514	69	.16

BLOWER WEIGHT LBS. ENDPLAY .XX/XX

DRAWING REVISION AA	REVISION BY SED	DATE 12/7/2017	TOLERANCES UNLESS OTHERWISE SPECIFIED: DEC. INCH mm ANGLE ±1° .X ±0.1 [2.5] .XX ±0.01 [0.25] .XXX ±0.005 [0.127] XXXX ±0.0005 [0.0127]	DRAWN BY SED	DATE 12/7/2017	REGAL BELLOI AMERICA, INC. Regal Beloit America, Inc.
ECO-0135759	APPROVED BY SDM	DATE 12/7/2017	REMOVED BURRS & BREAK SHARP EDGES: .003/.015 [0.076/ 381] X 45° CORNER FILLETS: R.02 [51] MACHINED SURFACES: 125/ INCR/ 32/ mm SHOWN IN [BRACKETS]	APPROVED BY SDM	DATE 12/7/2017	DESCRIPTION OUTLINE BLOWER ASSY
BLOWER WEIGHT LBS. ENDPLAY .XX/XX			REMOVED BURRS & BREAK SHARP EDGES: .003/.015 [0.076/ 381] X 45° CORNER FILLETS: R.02 [51] MACHINED SURFACES: 125/ INCR/ 32/ mm SHOWN IN [BRACKETS]	DATE 12/7/2017	REFERENCE	MATERIAL PROCESS/FINISH
BLOWER WEIGHT LBS. ENDPLAY .XX/XX			THIRD ANGLE PROJECTION	SIZE D	DRAWING NUMBER 70625925	SHEET 1 OF 1