

THERMALLY PROTECTED
SEALED BALL BEARING
CLASS "B" INSULATION
416 SS SHAFT

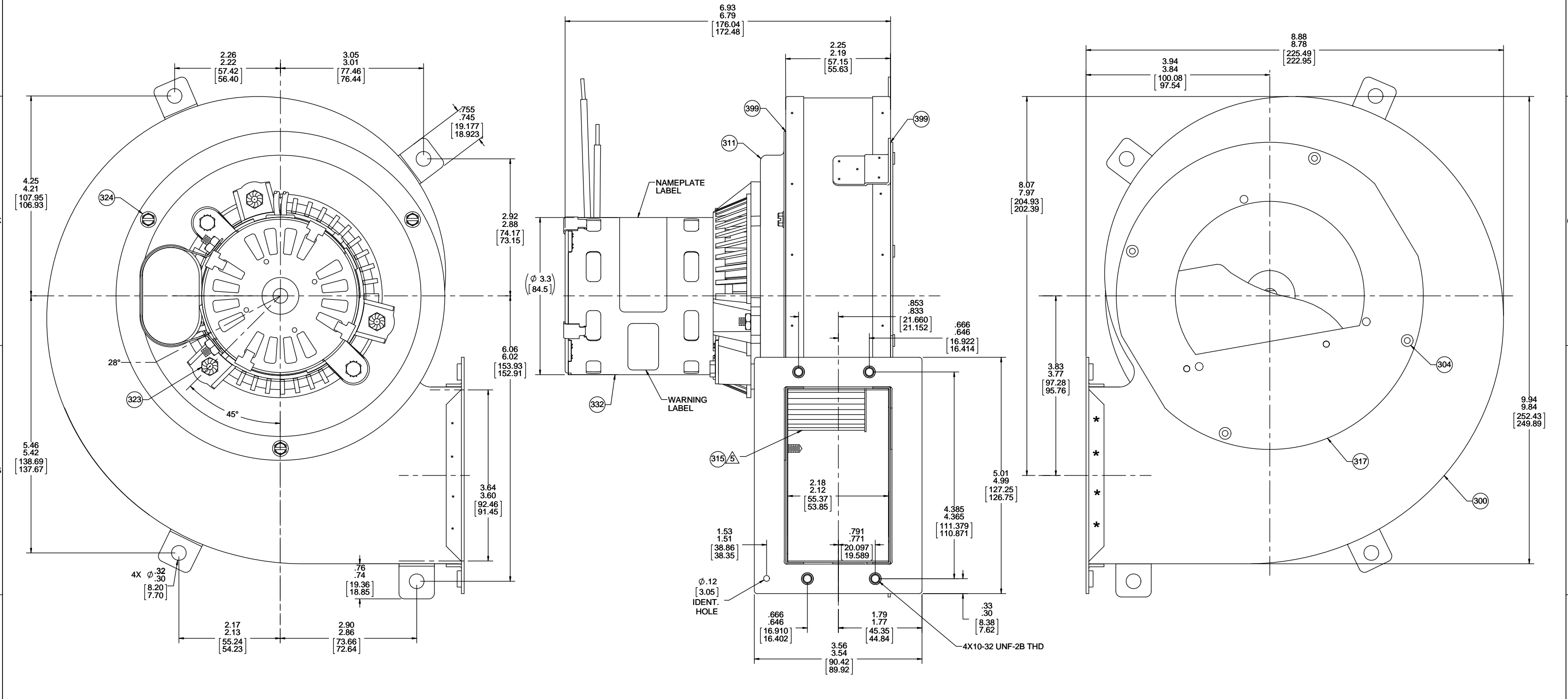
APPLICATION:	DRAFT INDUCER AFTER MARKET SALES	B	LA	FR	A	S	C	E	B	A
CUSTOMER:	FASCO DIST.	18	62	33	V	03	CC	5	0	0
CUSTOMER PN:	A325									

NOTES:

1. SEAL BETWEEN MOTOR MOUNTING PLATE AND HOUSING USING RTV SEALANT PC 399.
2. SEAL BETWEEN INLET PLATE AND HOUSING ASSEMBLY USING RTV SEALANT PC 399.
3. INSPECTION TEST FIXTURE IS REQUIRED.
4. PACK 1 PER CONTAINER, 48 MAX. AMT. PER PALLET, 12 CONTAINERS PER LAYER, 4 LAYERS PER PALLET, PACKING ASSY: 87854482, PER 88834200 AND 88834408.
5. LOCATE IMPELLER USING A .030 [.762] GAUGE MOUNTING OFF MOUNTING PLATE.
6. NO PACKAGING TAPE OVER CARTON LABEL.
7. CARTON LABELS MUST ALL FACE ONE DIRECTION TOWARD THE OPEN END OF THE PALLET. SEE 88834408
8. 4 MFD 370 VAC CAPACITOR
9. BLOWER - NATURAL, MOTOR - FLAT BLACK

LEAD MATERIAL
18 GA. 125°C 2/64 INSUL.
X-LINKED POLY.
(1) ORANGE
48.00/46.00 [1219.20/1168.40]
.68/.56 [17.27/14.22] STRIP
(1) BLACK
56.00/54.00 [1422.40/1371.60]
.68/.56 [17.27/14.22] STRIP

CAPACITOR LEAD MATERIAL
(2) BROWN
8.00/6.00 [203.20/152.40]
FFLAG TERM. 89034045
AMP 42742-2



TYPICAL PERFORMANCE TEST DATA WITH A 2" INLET RESTRICTOR			
AT 230 VOLTS 60 Hz			
RPM	WATTS	AMPS	
3308	119	.53	

DRAWING REVISION E	REVISION BY PLA	DATE 11/17/2016	TOLERANCES UNLESS OTHERWISE SPECIFIED: DEC. INCH mm ANGLE .X ±0.1 [±2.5] ±1° .XX ±0.01 [±0.25] .XXX ±0.005 [±0.127] XXX ±0.0005 [±0.0127]	DRAWN BY PLA	DATE 11/17/2016	REGAL BELLOIT AMERICA, INC.™ Regal Beloit America, Inc.
ECO-0070057	APPROVED BY MLS	DATE 11/17/2016	APPROVED BY MLS	DATE 11/17/2016	DESCRIPTION BLOWER ASSY	
UPDATED WARNING LABEL, REDRAWN ON SW <small>PROPRIETARY AND CONFIDENTIAL INFORMATION - THIS DOCUMENT IS THE PROPERTY OF REGAL BELLOIT AMERICA, INC. OWNERS AND CONTAINS OWNERS PROPRIETARY INFORMATION. ANY PERSON, CORPORATION OR OTHER FIRM RECEIVING IT IS DEEMED, BY RECEIVING IT, TO AGREE THAT IT, AND ANY PART OF IT, SHALL NOT BE DISCLOSED TO ANY PERSON, CORPORATION OR OTHER ENTITY, DUPLICATED AND/OR USED, EXCEPT AS EXPRESSLY APPROVED IN WRITING IN ADVANCE BY OWNER. THIS DOCUMENT SHALL BE RETURNED TO OWNER UPON REQUEST. IT MAY BE SUBJECT TO CERTAIN RESTRICTIONS UNDER APPLICABLE EXPORT CONTROL LAWS AND REGULATIONS.</small>			REMOVE BURRS & BREAK SHARP EDGES: .003/.015 [0.076/.381] X 45° CORNER FILLETS: R.02 [5.1] MACHINED SURFACES: 125/ INCH √ mm 32/ mm SHOWN IN [BRACKETS]	MATERIAL SEE NOTE 9	SIZE D	DRAWING NUMBER 70625927
BLOWER WEIGHT 7.25 LBS.		ENDPLAY .XX/XX		SHEET 1 OF 1		