

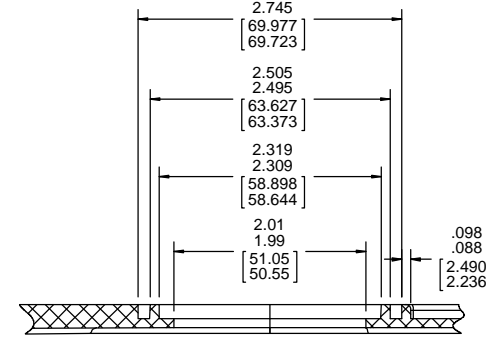
- NOTES:
1. TOD SWITCH MUST HAVE PROTECTIVE SHEATH. [CTQ]
  2. INSPECTION TEST FIXTURING IS REQUIRED.
  3. STATIC TAP READING IS TO BE -1.55 MINIMUM CORRECTED TO STANDARD AIR (0.075 LB/FT<sup>3</sup>) WITH A 1.25 INLET RESTRICTOR.
  4. PACK 1 PER CONTAINER, 12 CONTAINERS PER LAYER, 3 LAYERS PER PALLET, 36 MAX. PER PALLET, PACKING ASSY. 87854916, PER 88834200.
  5. CARTON LABELS MUST ALL FACE ONE DIRECTION TOWARD THE OPEN END OF THE PALLET. SEE 88834408.
  6. NO PACKAGING TAPE OVER CARTON LABEL.
  7. [CTQ] = CRITICAL TO QUALITY.

Uncontrolled Copy

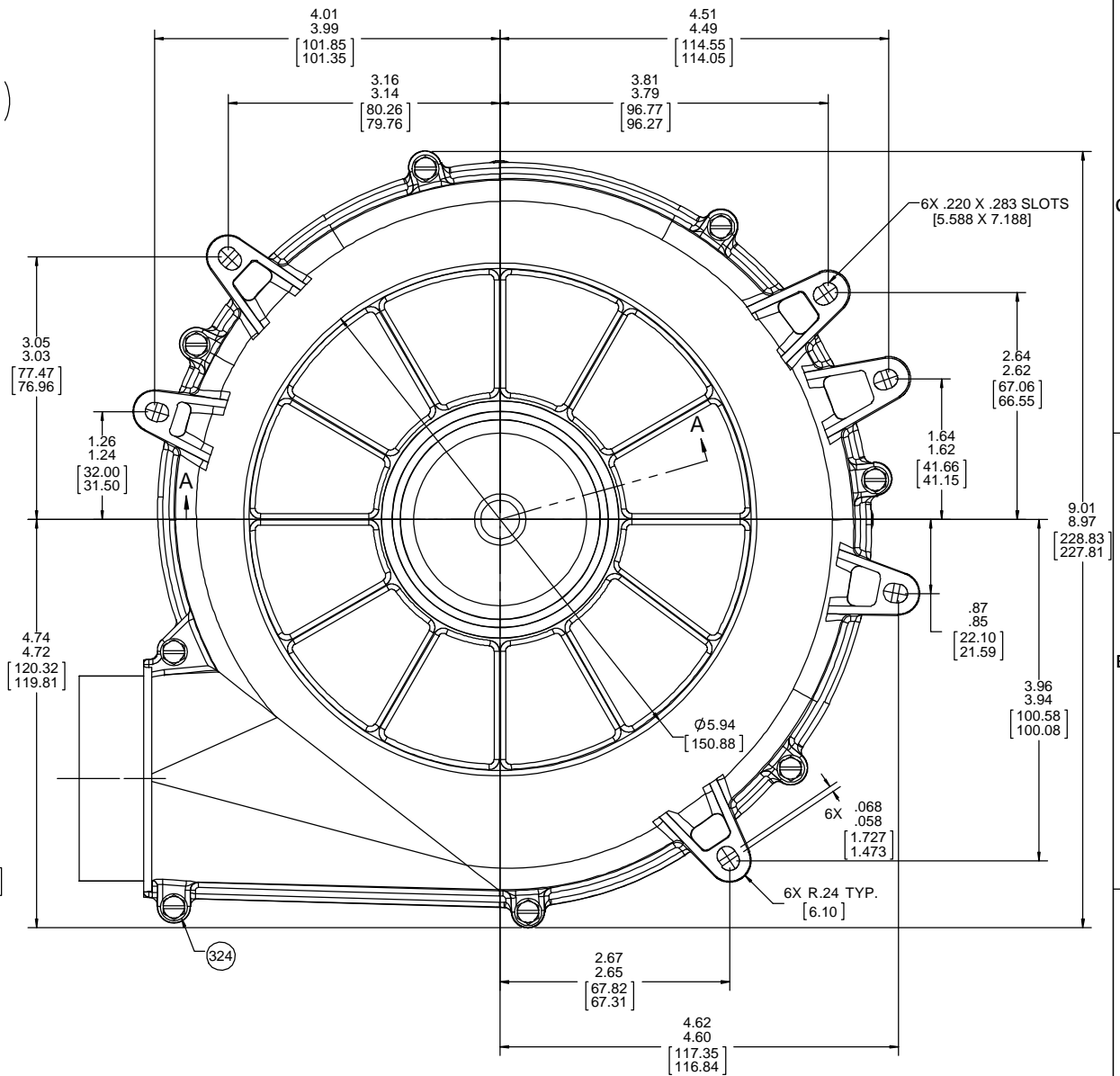
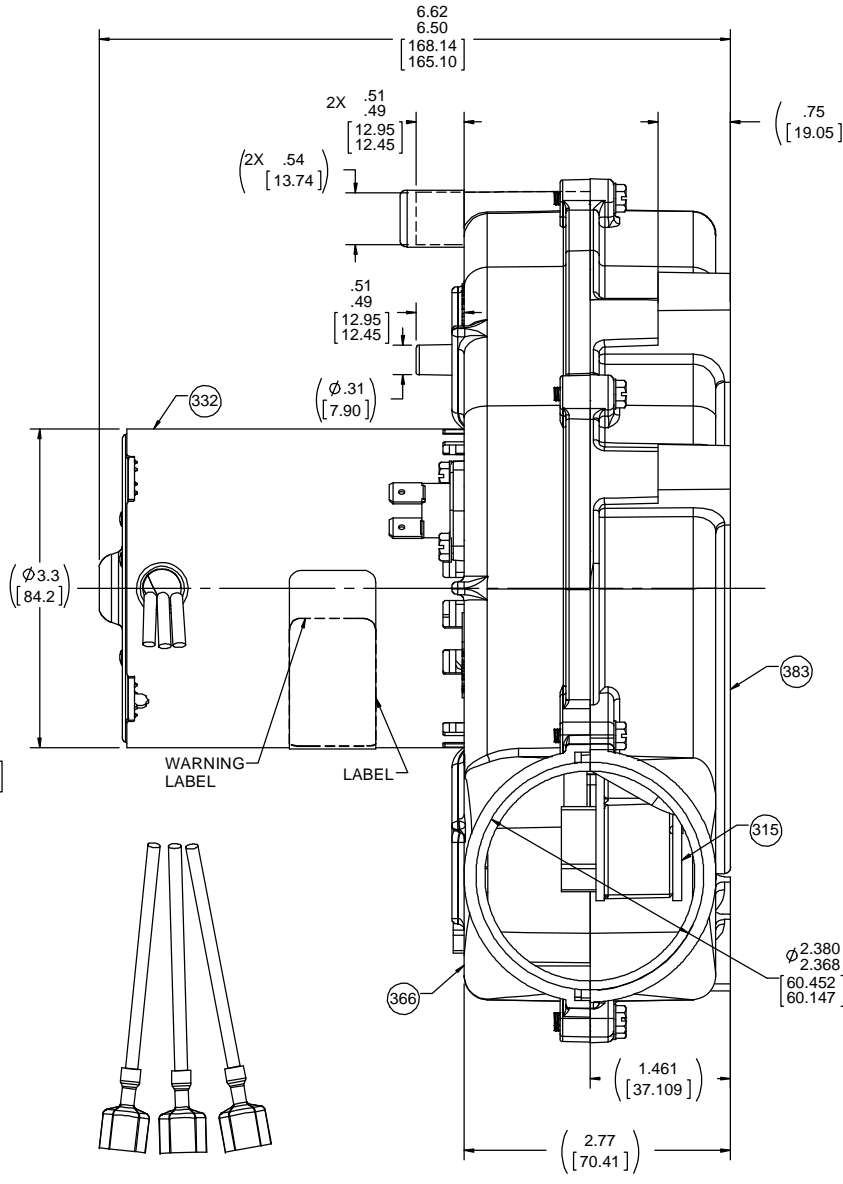
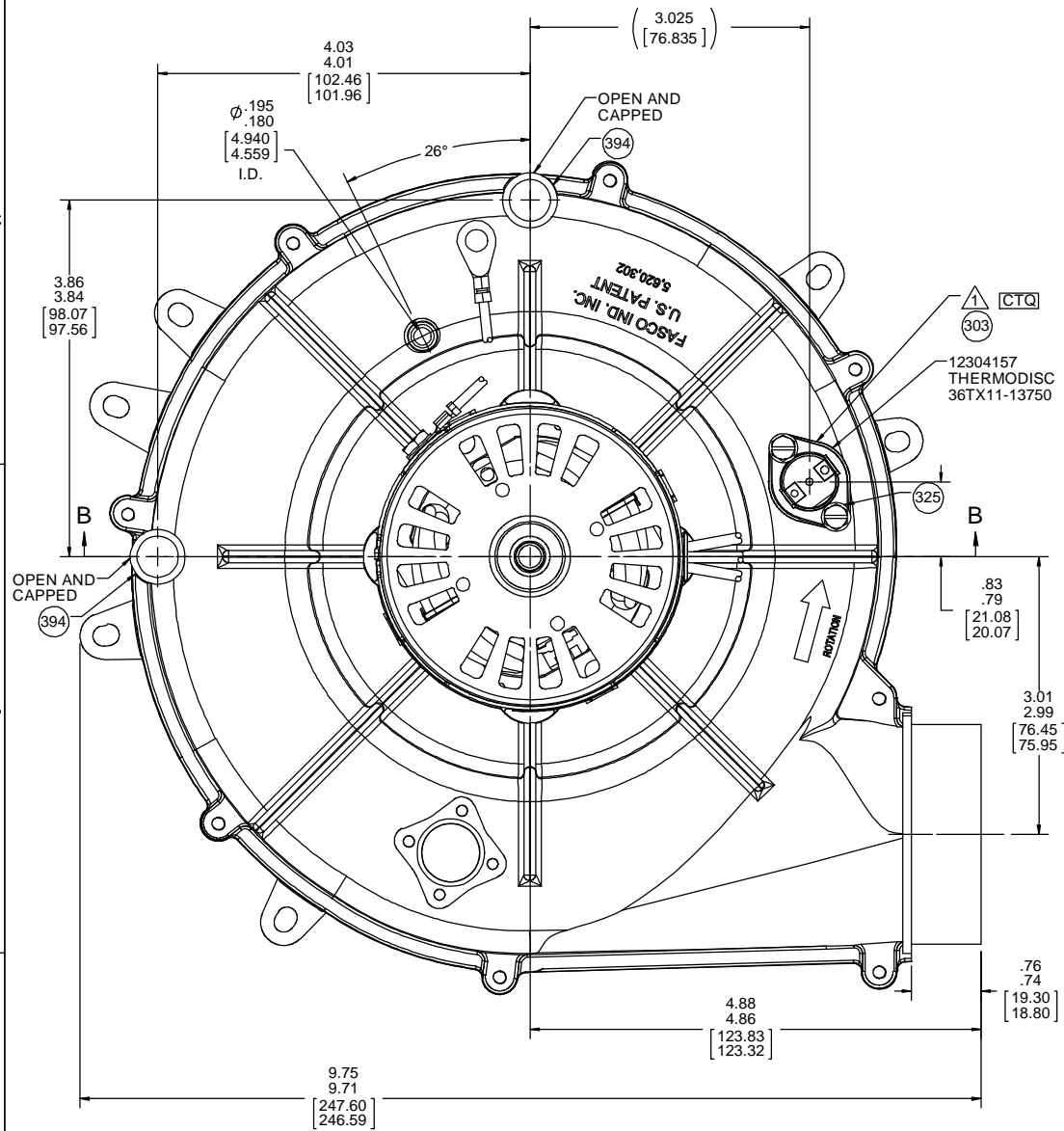
THERMALLY PROTECTED  
CLASS 'B' INSULATION  
416 SS SHAFT

APPLICATION:	90+ GAS FURNACE	B	LA	FR	A	S	C	E	B	A
CUSTOMER:	FASCO DIST.	PF	21	30	F	06	EU	6	3	0
CUSTOMER PN:	A285									

LEAD MATERIAL  
18 GA. 125°C 2/64 INSUL.  
X-LINKED POLY.  
(1) BLACK, (1) WHITE, (1) RED  
20.00/18.00 [508.00/457.20]  
W/MSPADE TERMS.  
AMP 2-520102-2  
GROUND LEAD  
GRN/YEL  
10.50/9.50 [266.70/241.30]  
W/IRING TERMS.  
AMP 60700-2



SECTION A-A

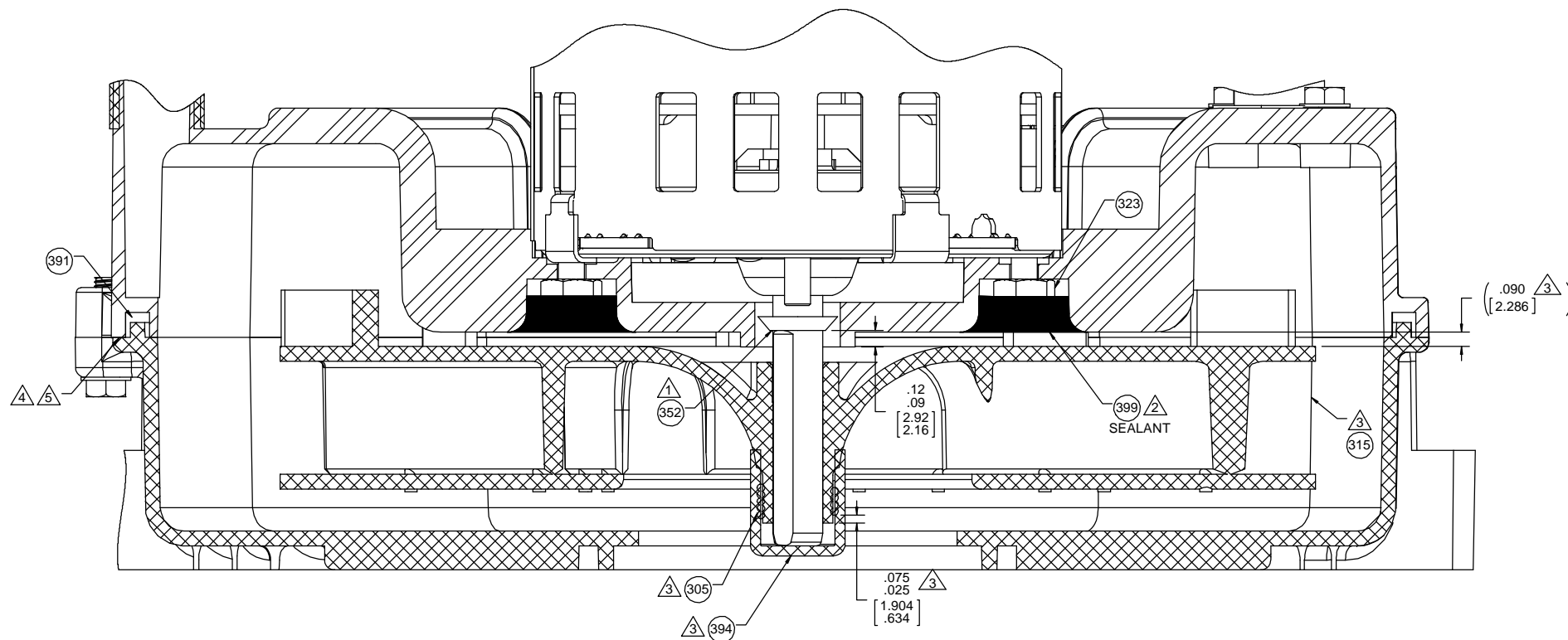


TYPICAL PERFORMANCE TEST DATA WITH 1.25 INLET RESTRICTOR			
AT 115 VOLTS 60 Hz			
	RPM	WATTS	AMPS
HIGH	3369	100	1.30
LOW	3251	60	0.75
BLOWER WEIGHT 4 7/8 LBS.			ENDPLAY .030/.010 [.762/.254]

DRAWING REVISION AA	REVISION BY MLS	DATE 3/14/2018	TOLERANCES UNLESS OTHERWISE SPECIFIED: DEC. INCH .mm ANGLE ±1°	DRAWN BY MLS	DATE 3/14/2018	DESCRIPTION OUTLINE
ECO-0140776	APPROVED BY JMG	DATE 3/14/2018	REMOVED SURFACES: XXX ±0.005 [±0.127] MACHINED SURFACES: 125 INCR/ML	APPROVED BY JMG	DATE 3/14/2018	DESCRIPTION OUTLINE
REDRAWN TO SOLIDWORKS			EDGE: .003/.015 [0.076/.381] X 45°	DATE 3/14/2018	DATE 3/14/2018	DESCRIPTION OUTLINE
CORPORATE AND CONFIDENTIAL INFORMATION - THIS DOCUMENT IS THE PROPERTY OF REGAL BELOIT AMERICA, INC. CONSENT AND CONTAINING OWNERS PROPRIETARY INFORMATION, ANY PERSON, CORPORATION OR OTHER FIRM RECEIVING IT IS DEEMED, BY RECEIVING IT, TO AGREE THAT IT, AND/OR ANY PART OF IT, SHALL NOT BE DISCLOSED TO ANY PERSON, CORPORATION OR OTHER ENTITY, DUPLICATED, AND/OR USED, EXCEPT AS EXPRESSLY APPROVED IN WRITING IN ADVANCE BY OWNER. THIS DOCUMENT SHALL BE RETURNED TO OWNER UPON REQUEST. IT MAY BE SUBJECT TO CERTAIN RESTRICTIONS UNDER APPLICABLE EXPORT CONTROL LAWS AND REGULATIONS.			CORNER FILLETS: R.02 [51]	DATE 3/14/2018	DATE 3/14/2018	DESCRIPTION OUTLINE
REGAL BELOIT AMERICA, INC.			THIRD ANGLE PROJECTION	DATE 3/14/2018	DATE 3/14/2018	DESCRIPTION OUTLINE
REGAL BELOIT AMERICA, INC.			SIZE D	DATE 3/14/2018	DATE 3/14/2018	DESCRIPTION OUTLINE
REGAL BELOIT AMERICA, INC.			SIZE D	DATE 3/14/2018	DATE 3/14/2018	DESCRIPTION OUTLINE
REGAL BELOIT AMERICA, INC.			SIZE D	DATE 3/14/2018	DATE 3/14/2018	DESCRIPTION OUTLINE
REGAL BELOIT AMERICA, INC.			SIZE D	DATE 3/14/2018	DATE 3/14/2018	DESCRIPTION OUTLINE

NOTES:

1. OIL SLINGER MUST BE LOCATED ON SHAFT AS SHOWN BELOW.
2. BEFORE ASSEMBLING IMPELLER TO SHAFT, PRESS ROPE SEALANT AGAINST EXPOSED FACE OF NUTS TO PROTECT FROM CORROSIVES.
3. ASSEMBLE COMPRESSION RING TO IMPELLER. LOCATE AS SHOWN ON DRAWING. DIMENSION IS FROM THE END OF IMPELLER HUB TO THE COMPRESSION RING. PRESS IMPELLER ASSEMBLY INTO SHAFT AND LOCATE AS SHOWN ON DRAWING. THEN ASSEMBLE END CAP OVER THE END OF SHAFT AND IMPELLER HUB.
4. LINE UP HOUSING HALVES WITH THREE PILOTS. SECURE WITH EIGHT SCREWS. TORQUE SCREWS TO 7 IN. LBS. MAX. NO AIR GAPS ALLOWED BETWEEN HOUSING HALVES. NOTE: PLASTIC STRIPS AT TORQUE SETTINGS ABOVE 7 IN. LBS.
5. WHEN EQUIPPED WITH A WATER SEAL, EVERY 20TH BLOWER IS TO BE CHECKED FOR WATER LEAKAGE. IF LEAKERS ARE DISCOVERED, CONTACT ENGINEERING. USE 1/3 PARTS MR. BUBBLE TO 2/3 PARTS WATER.
6. STUFF PAPER IN AIR GAPS.



SECTION B-B

DRAWING REVISION		REVISION BY	DATE	TOLERANCES UNLESS OTHERWISE SPECIFIED:		DRAWN BY		MLA Regal Beloit America, Inc.	
AA		MLS	3/14/2018	DEC.	INCH	mm	ANGLE	DATE	MLA
ECO-0140776		JMG	3/14/2018	.X	±0.1	±2.5	±1°	DATE	3/14/2018
ECO DESCRIPTION		REDRAWN TO SOLIDWORKS		.XX	±0.01	±0.25		APPROVED BY	JMG
<small>                 COPYRIGHT REGAL BELOIT AMERICA, INC. ALL RIGHTS RESERVED.                  PROPRIETARY AND CONFIDENTIAL INFORMATION - THIS DOCUMENT IS THE PROPERTY OF REGAL BELOIT AMERICA, INC. CONSENT AND CONFIRMATION OWNERS PROPRIETARY INFORMATION, ANY PERSON, CORPORATION OR OTHER FIRM RECEIVING IT IS DEEMED, BY RECEIVING IT, TO AGREE THAT IT, AND/OR ANY PART OF IT, SHALL NOT BE DISCLOSED TO ANY PERSON, CORPORATION OR OTHER ENTITY, DUPLICATED, AND/OR USED, EXCEPT AS EXPRESSLY APPROVED IN WRITING IN ADVANCE BY OWNER. THIS DOCUMENT SHALL BE RETURNED TO OWNER UPON REQUEST. IT MAY BE SUBJECT TO CERTAIN RESTRICTIONS UNDER APPLICABLE EXPORT CONTROL LAWS AND REGULATIONS.             </small>				.XXX	±0.005	±0.127		DATE	3/14/2018
				XXXX	±0.0005	±0.0127		REFERENCE	
				REMOVE BURRS & BREAK SHARP EDGES: .003/.015 [.076/.381] X 45°				DESCRIPTION	
				CORNER FILLETS: R.02 [.51]				OUTLINE	
				MACHINED SURFACES: 125/				MATERIAL	
				mm SHOWN IN [BRACKETS]				PROCESS/FINISH	
								BLACK	
								SIZE	
								DRAWING NUMBER	
								702111906	
								SHEET	
								2 OF 2	