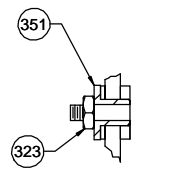


THERMALLY PROTECTED
CLASS "B" INSULATION
416 SS SHAFT

APPLICATION:	FURNACE	B	LA	FR	A	S	C	E	B	A
CUSTOMER:	FASCO DIST.	12	21	47	V	02	HB	9	3	0
CUSTOMER PN:	A284									

- NOTES:
- NO STA-LOC REQUIRED ON IMPELLER.
 - DIM. TO BE MEASURED WITH ENDPLAY PULLED OUT.
 - SECURE GROUND LEAD TO BLOWER HSG. WITH PC 325 SCREW AS SHOWN.
 - PACK 1 PER CONTAINER, 80 MAX. AMT. PER PALLET, PACKING ASSY: 87654335, 16 CONTAINERS PER LAYER, 5 LAYERS PER PALLET, PER 88834200 AND 88834408.
 - ASSEMBLE IMPELLER USING TOOL NO. 018-086-001.
 - INSPECTION TEST FIXTURING IS REQUIRED.
 - THE (2) Ø .136/.132 [3.454/3.352] HOLES IN WALL TO BE LOCATED AT THESE TWO REFERENCE LOCATIONS AS SHOWN.
 - CARTON LABELS MUST ALL FACE ONE DIRECTION TOWARD THE OPEN END OF THE PALLET. SEE 88834408.
 - NO PACKAGING TAPE OVER CARTON LABEL.
 - BLOWER - NATURAL, MOTOR - FLAT BLACK

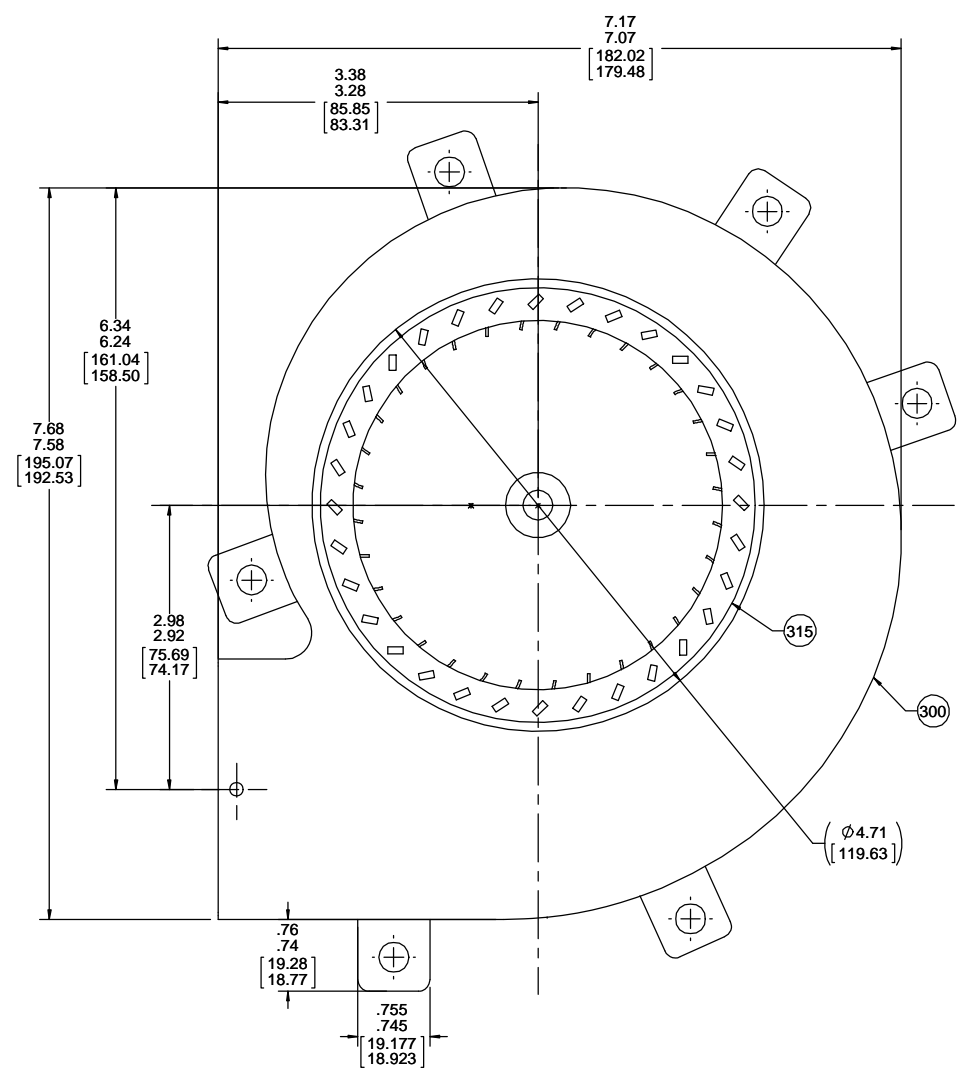
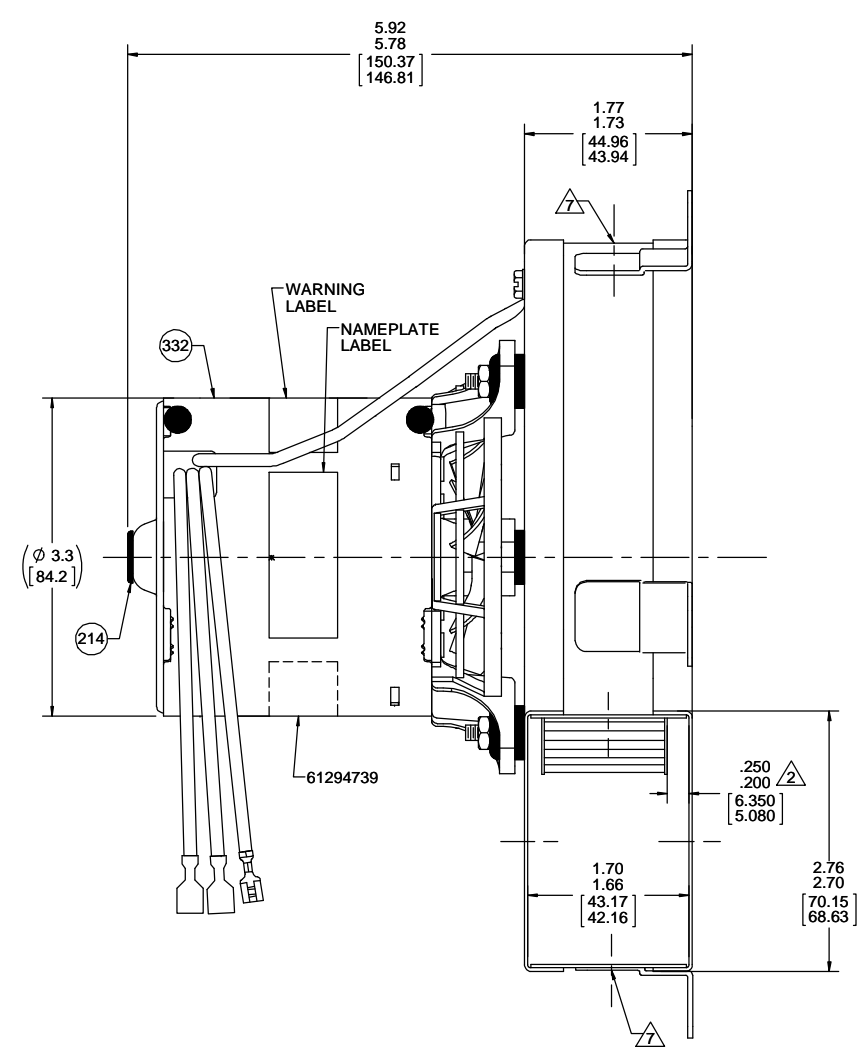
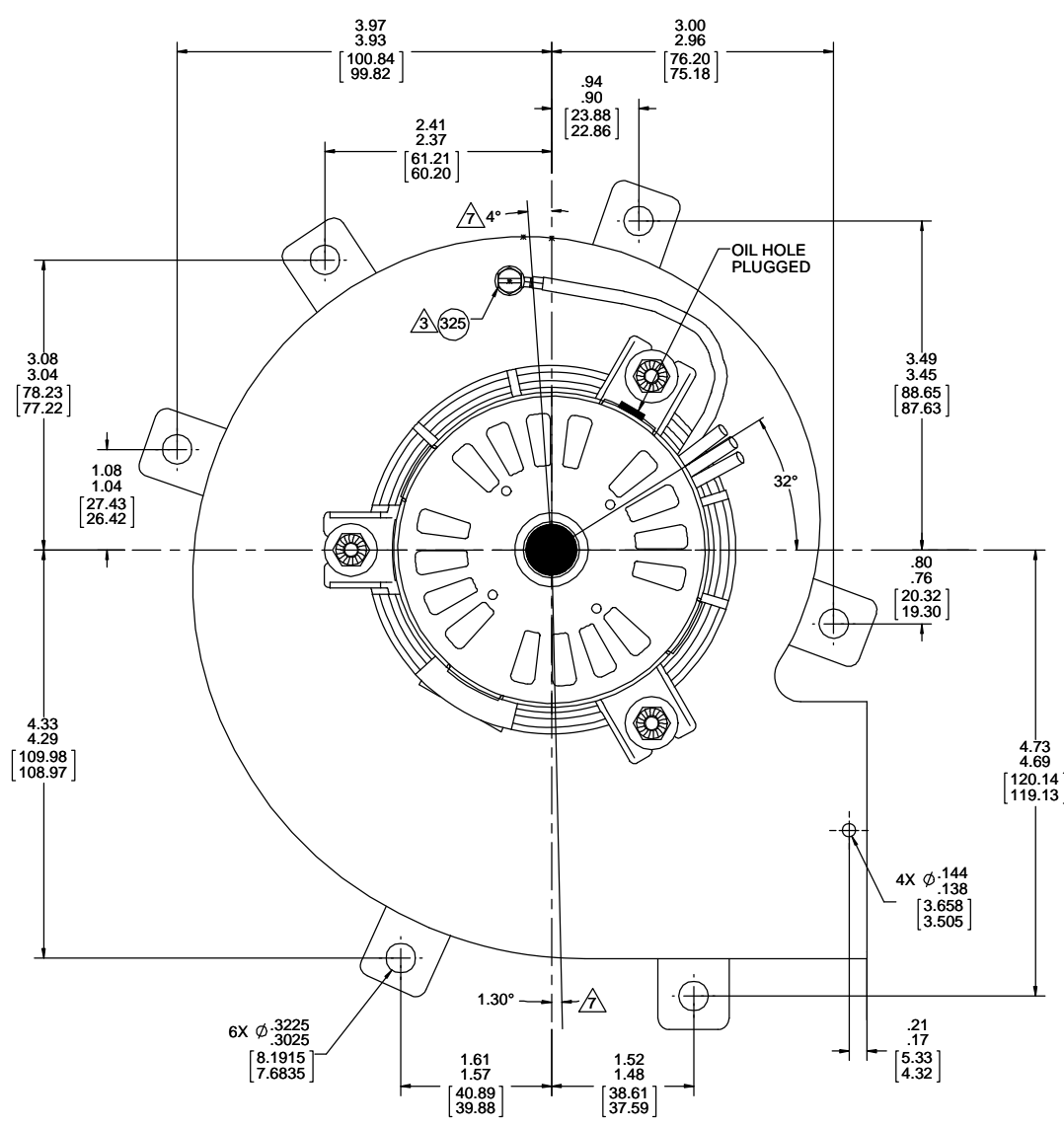


MOTOR MOUNTING
DETAIL

Connection Diagram
Pur — Common
Red — 240 V
Blk — 208 V
Grn/Yel — Grd

LEAD MATERIAL
18 GA. 125°C, 4/64 INSUL.
EPDM, (1) PURPLE
56.00/54.00 [1422.40/1371.60]
FSPADE TERM.
AMP 42692-2
X-LINKED POLY., (1) BLACK (1) RED
56.00/54.00 [1422.40/1371.60]
FSPADE TERM.
AMP 2-520261-2

GROUND LEAD
18 GA. 125°C 2/64 INSUL.
X-LINKED POLY., GRN/YEL.
8.00/6.00 [203.20/152.40]
RING TERM.
AMP 61794-1



TYPICAL PERFORMANCE TEST DATA WITH 1 5/16" INLET RESTRICTOR			
AT 240 VOLTS 60 Hz			
	RPM	WATTS	AMPS
	3298	69	.46
BLOWER WEIGHT	5 LBS.		ENDPLAY .025/.008 [.635/.203]

DRAWING REVISION AA	REVISION BY PLA	DATE 2/20/2017	TOLERANCES UNLESS OTHERWISE SPECIFIED: DEC. INCH mm ANGLE .X ±0.1 [±2.5] .XX ±0.01 [±0.25] .XXX ±0.005 [±0.127] XXX ±0.0005 [±0.0127]	DRAWN BY PLA	DATE 2/20/2017	APPROVED BY SDM	DESCRIPTION OUTLINE BLOWER ASSY
ECO-0118169	APPROVED BY SDM	DATE 2/20/2017	REMOVE BURRS & BREAK SHARP EDGES: .003/.015 [0.076/.381] X 45° CORNER FILLETS: R.02 [.51] MACHINED SURFACES: 125/ INCH/ MIN/ 3.2/ mm SHOWN IN [BRACKETS]	DATE 2/20/2017	REFERENCE	MATERIAL	PROCESS/FINISH SEE NOTES
ADDED OVERALL DIM. REDRAWN ON SW			PROPRIETARY AND CONFIDENTIAL INFORMATION - THIS DOCUMENT IS THE PROPERTY OF REGAL BELOIT AMERICA, INC. CONCEPT AND CONTAINS OWNERS PROPRIETARY INFORMATION. ANY PERSON, CORPORATION OR OTHER FIRM RECEIVING IT IS DEEMED, BY RECEIVING IT, TO AGREE THAT IT, AND/OR ANY PART OF IT, SHALL NOT BE DISCLOSED TO ANY PERSON, CORPORATION OR OTHER ENTITY, DUPLICATED, AND/OR USED, EXCEPT AS EXPRESSLY APPROVED IN WRITING IN ADVANCE BY OWNER. THIS DOCUMENT SHALL BE RETURNED TO OWNER UPON REQUEST. IT MAY BE SUBJECT TO CERTAIN RESTRICTIONS UNDER APPLICABLE EXPORT CONTROL LAWS AND REGULATIONS.	THIRD ANGLE PROJECTION	SIZE D	DRAWING NUMBER 702111905	SHEET 1 OF 1

