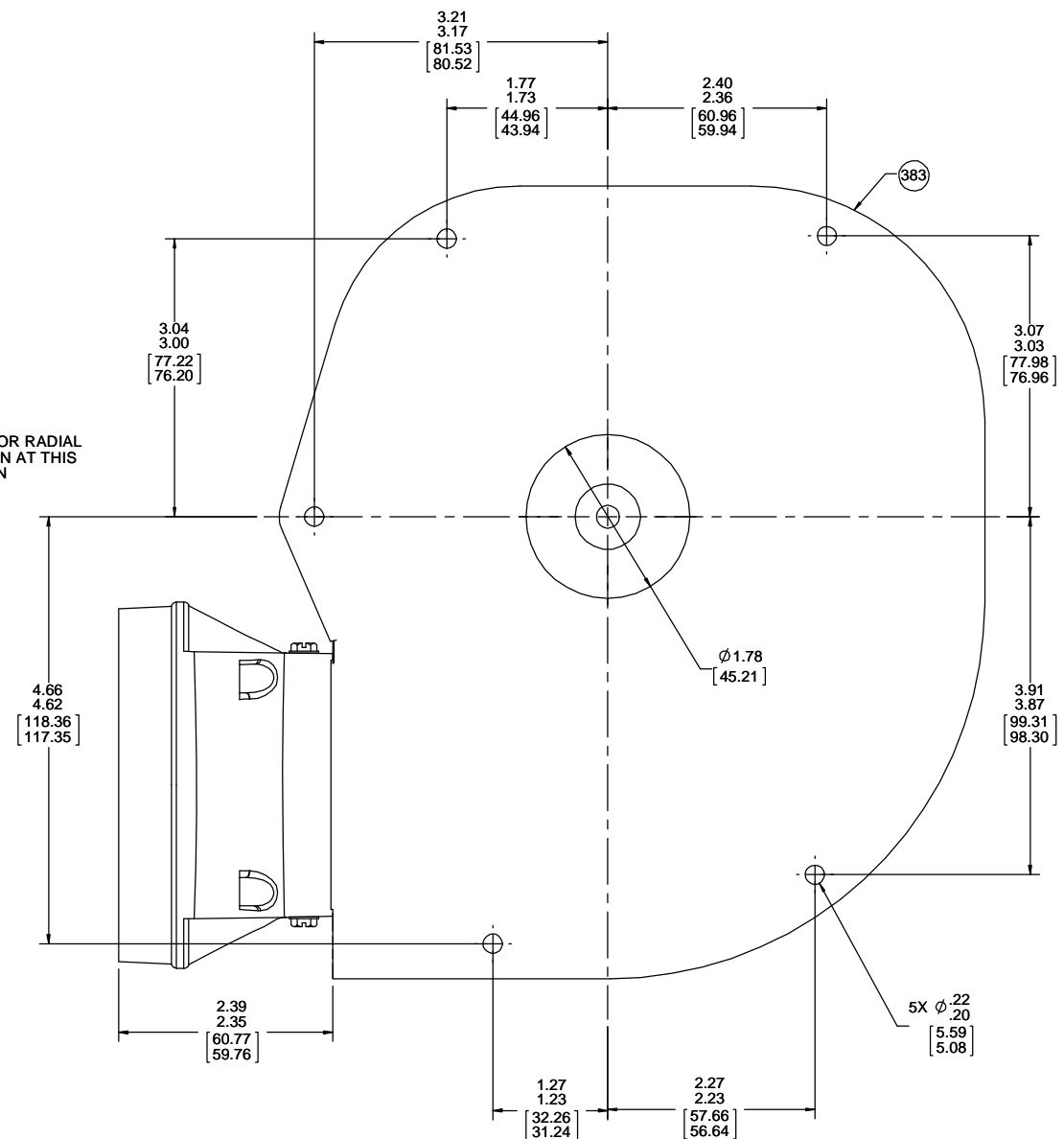
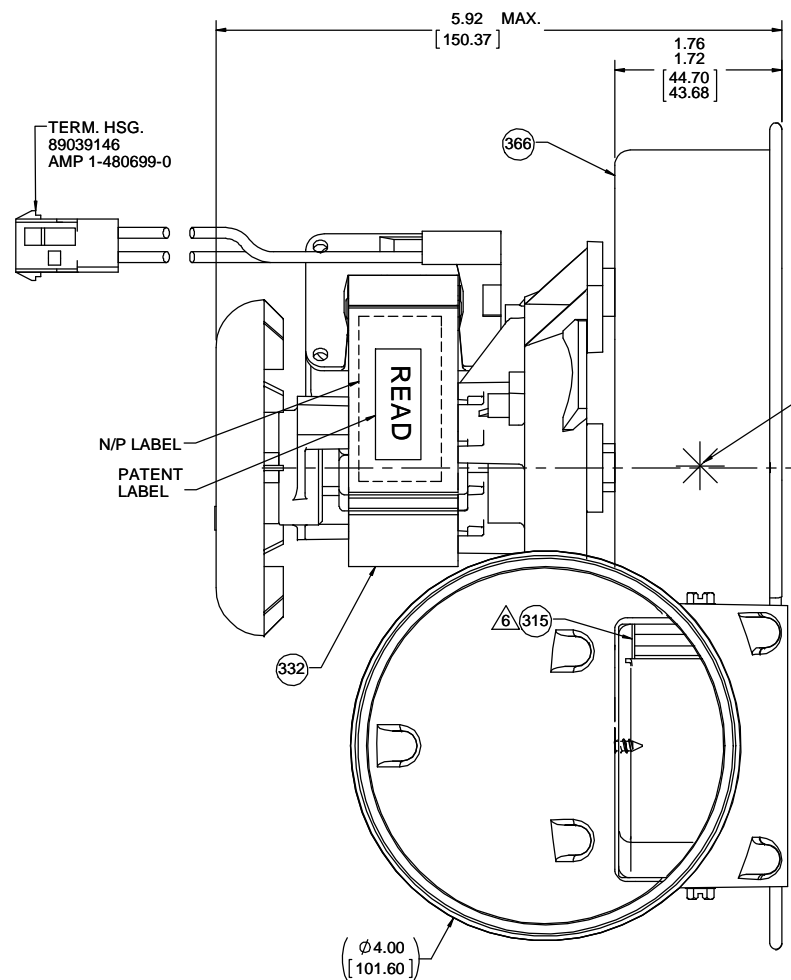
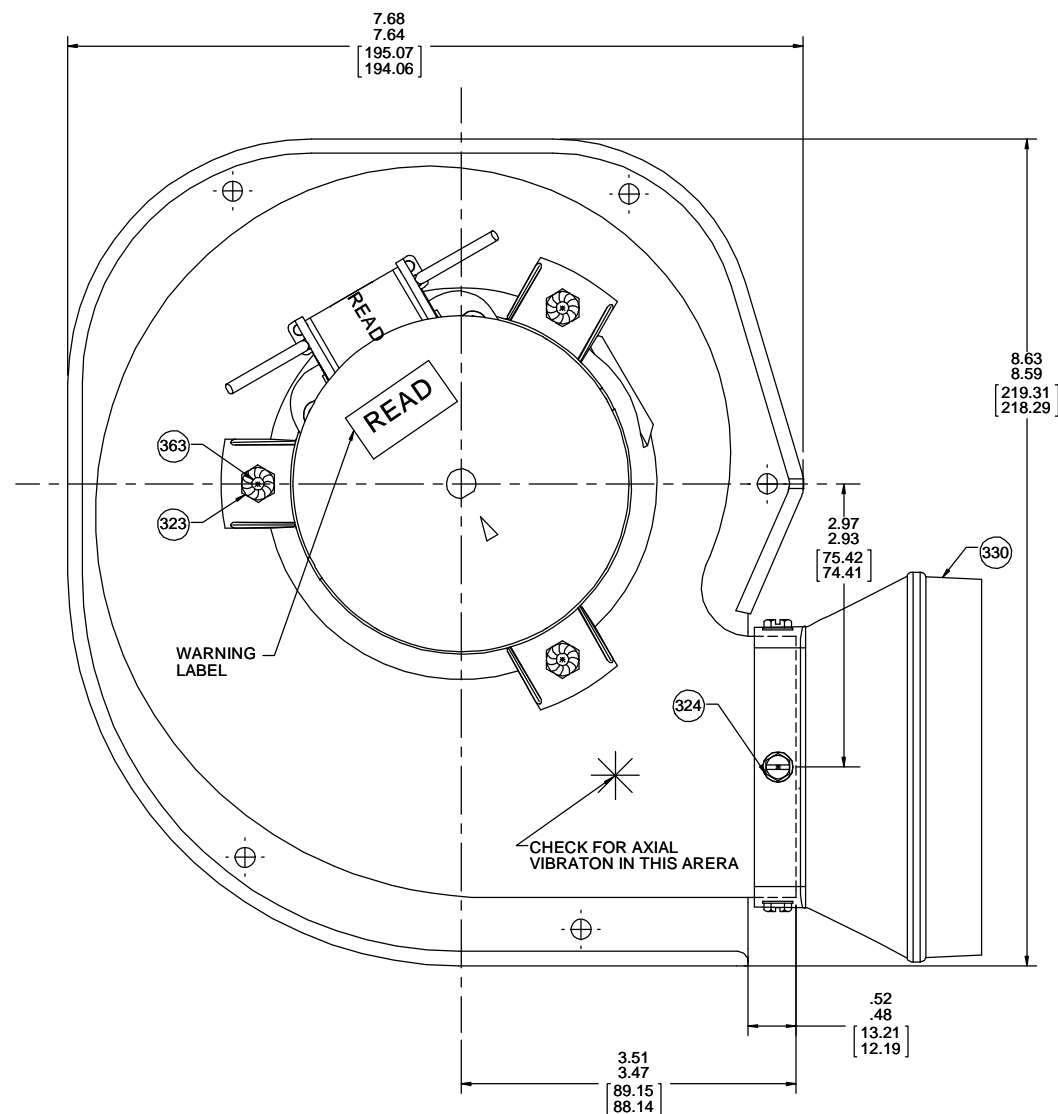


THERMALLY PROTECTED
CLASS "B" INSULATION
416 SS SHAFT
SEALED BALL BEARING

| | | | | | | | | | | |
|--------------|-------------|----|----|----|---|----|----|---|---|---|
| APPLICATION: | GAS FURNACE | B | LA | FR | A | S | C | E | B | A |
| CUSTOMER: | FASCO DIST. | GS | 58 | 48 | X | 17 | BO | 5 | 0 | 0 |
| CUSTOMER PN: | A260 | | | | | | | | | |

- NOTES:
- NO STA-LOC REQUIRED ON IMPELLER.
 - INSPECTION TEST FIXTURE IS REQUIRED.
 - 100% HIPOT 1500V FOR 1 SECOND.
 - 100% RUN, WITH 1" INLET RESTRICTOR & TEST FOR AMP DRAW.
 - AUDIT VIBRATION PERIODICALLY TO INSURE .0015 MAX. DISPLACEMENT.
 - IMPELLER MEASURED FROM BACK PLATE OF IMPELLER TO INSIDE OF HOUSING .150/.130 [3.81/3.30].
 - PACK 1 PER CONTAINER, 12 CONTAINERS PER LAYER, 4 LAYERS PER PALLET, 48 MAX. PER PALLET, PACKING ASSY: 87855084, 88834200, 88834408.
 - CARTON LABELS MUST ALL FACE ONE DIRECTION TOWARD THE OPEN END OF THE PALLET PER 88834408.
 - NO PACKAGING TAPE OVER CARTON LABEL.
 - APPLY NAMEPLATE LABEL TO MOTOR TO READ FROM BACK END OF MOTOR.
 - SERIAL NUMBER.

LEAD MATERIAL
18 GA. 125°C, 2/64 INSUL.
X-LINK POLY, BLK & WHT
6.50/5.50 [165.10/139.70]
TO BACK OF TERM. HSG.
W/ PIN TERMS.
AMP 350218-1



10 61305336

FASCO NO. 70581838
XXXXXXXXXXXXXXX 11

Assembled in Mexico
Model A260

61304322

US PATENT:
6314894, 6318358, 6468034
6494152, 6595146, 6895874
6902373, 6908281, 6929448

61305568

SAFETY WARNING
This motor must be grounded in accordance with local or national electrical codes to prevent possible injury due to electrical shock.

AVERTISSEMENT DE SECURITE
Ce moteur doit être fondé sur conformément à la réglementation locale ou nationale électrique codes pour prévenir d'éventuelles blessures en raison de choc électrique.

| TYPICAL PERFORMANCE TEST DATA WITH A 1" INLET RESTRICTOR AT 115 VOLTS 60 Hz | | | |
|---|----------------|-------|------|
| | RPM | WATTS | AMPS |
| | 3267 | 68 | 1.23 |
| BLOWER WEIGHT LBS. | ENDPLAY .XX/XX | | |

| | | | | | | | |
|---|--------------------|--------------------|--|------------------|----------------------------|--------------------|------------------------------------|
| DRAWING REVISION BA | REVISION BY MLS | DATE 12/14/2017 | TOLERANCES UNLESS OTHERWISE SPECIFIED: DEC. INCH mm ANGLE .X ±0.1 [±2.5] .XX ±0.01 [±0.25] .XXX ±0.005 [±0.127] XXX ±0.0005 [±0.0127] | DRAWN BY RPT | DATE 5/4/2015 | APPROVED BY MLS | DESCRIPTION OUTLINE BLOWER ASSY |
| ECO-0135768 | JMG | 12/14/2017 | REMOVE BURRS & BREAK SHARP EDGES: .003/.015 [0.076/.381] X 45° CORNER FILLETS: R.02 [51] MACHINED SURFACES: 125/INCH/MLV 3/2 THIRD ANGLE PROJECTION | DATE 5/4/2015 | APPROVED BY MLS | DATE 5/4/2015 | DESCRIPTION OUTLINE BLOWER ASSY |
| <small>PROPRIETARY AND CONFIDENTIAL INFORMATION - THIS DOCUMENT IS THE PROPERTY OF REGAL BELOIT AMERICA, INC. CONSENT AND CONFIRMATION OF OWNERS PROPRIETARY INFORMATION, ANY PERSON, CORPORATION OR OTHER FIRM RECEIVING IT IS DEEMED, BY RECEIVING IT, TO AGREE THAT IT, AND/OR ANY PART OF IT, SHALL NOT BE DISCLOSED TO ANY PERSON, CORPORATION OR OTHER ENTITY, DUPLICATED, AND/OR USED, EXCEPT AS EXPRESSLY APPROVED IN WRITING IN ADVANCE BY OWNER. THIS DOCUMENT SHALL BE RETURNED TO OWNER UPON REQUEST. IT MAY BE SUBJECT TO CERTAIN RESTRICTIONS UNDER APPLICABLE EXPORT CONTROL LAWS AND REGULATIONS.</small> | | | | MATERIAL | PROCESS/FINISH | SHEET | |
| | | | | D | DRAWING NUMBER 70581838 | NATURAL | 1 OF 1 |