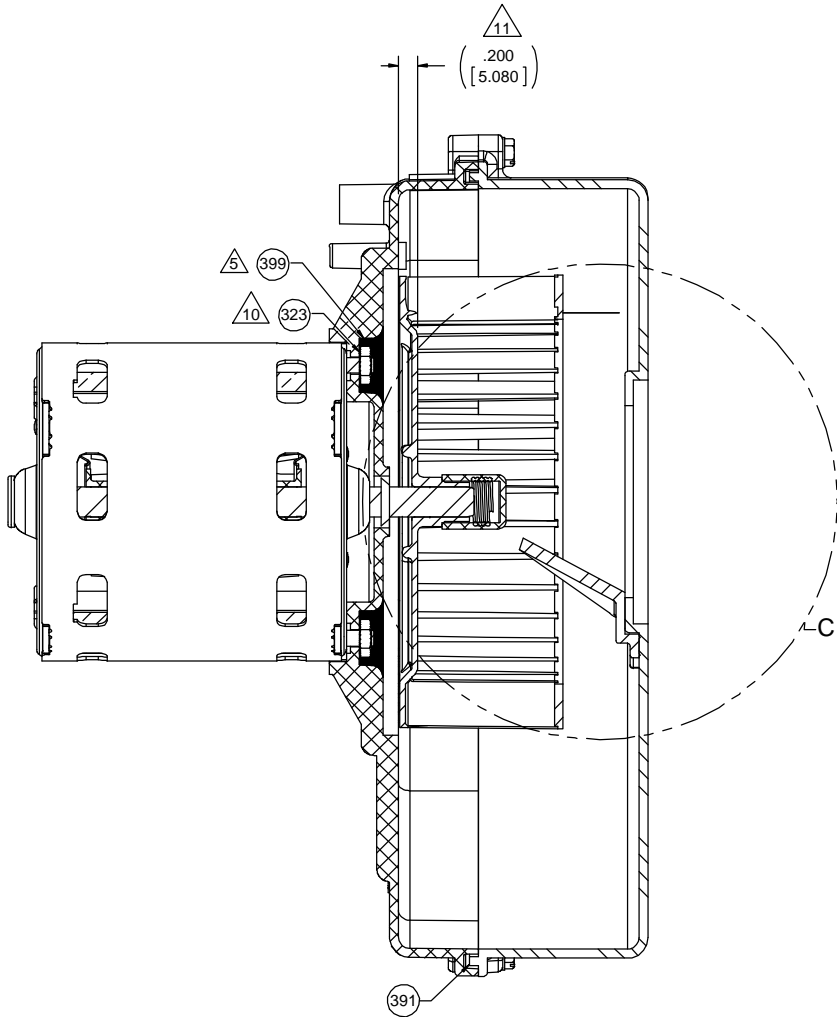
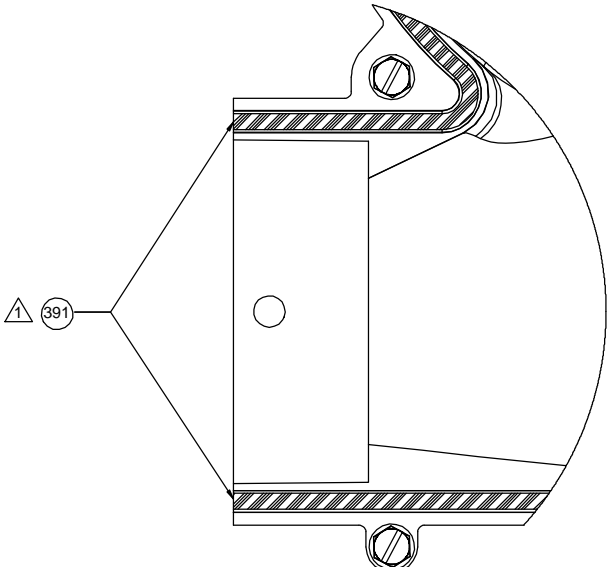


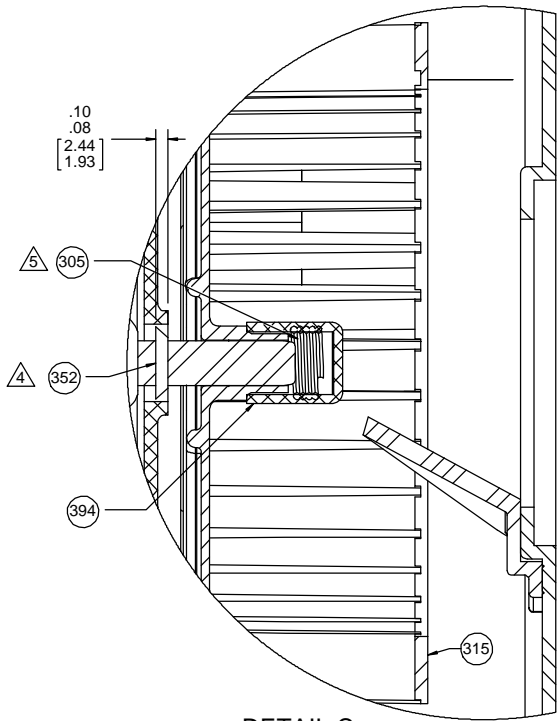
- NOTES:
- 1. LAY PC 391 (ROPE SEALANT) IN CHANNEL PROVIDED IN MOUNTING SHELL.
 - 2. LINE UP HOUSING HALVES WITH (3) PILOTS, SECURE WITH (7) PC 324 SCREWS. TORQUE SCREWS TO 7 IN. LBS. MAX. NO AIR GAPS ALLOWED BETWEEN HOUSING HALVES. NOTE: PLASTIC STRIPS AT TORQUE SETTINGS ABOVE 7 IN. LBS. TRIM EXCESS ROPE SEALANT FROM FACE OF BLOWER EXHAUST.
 - 3. STATIC TAP HOLES TO BE FREE OF FLASH.
 - 4. OIL SLINGER MUST BE LOCATED ON SHAFT AS SHOWN BELOW.
 - 5. BEFORE ASSEMBLING IMPELLER TO SHAFT, PRESS PC 399 SEALANT AGAINST EXPOSED FACE OF NUTS TO PROTECT FROM CORROSIVES.
 - 6. WHEN EQUIPPED WITH WATER SEAL, EVERY 20TH BLOWER IS TO BE CHECKED FOR WATER LEAKAGE. IF LEAKERS ARE DISCOVERED CONTACT ENGINEERING. (USE 1/3 PARTS MR. BUBBLE WITH 2/3 PARTS WATER FOR LEAK TEST).
 - 7. BEFORE ASSEMBLY OF PC 394 END CAP, ASSEMBLE TORSION SPRING TO IMPELLER. PRESS IMPELLER ASSEMBLY ON SHAFT AND LOCATE AS SHOWN BELOW. LOCATION OF IMPELLER MUST BE HELD WITH ENDPLAY OF MOTOR PULLED OUT.
 - 8. ALL UNITS MUST BE TESTED FOR SPEED AND WHERE EQUIPPED WITH STATIC TAP, FOR STATIC VACUUM TO THE VALUES LISTED ON BLOWER TOP COPY.
 - 9. VACUUM TO BE CHECKED WITH A 1.25" [31.75] I.D. INLET RESTRICTOR.
 - 10. NUTS MUST BE STAINLESS STEEL.
 - 11. ADJUST AS NECESSARY TO MEET PERFORMANCE REQUIREMENTS.



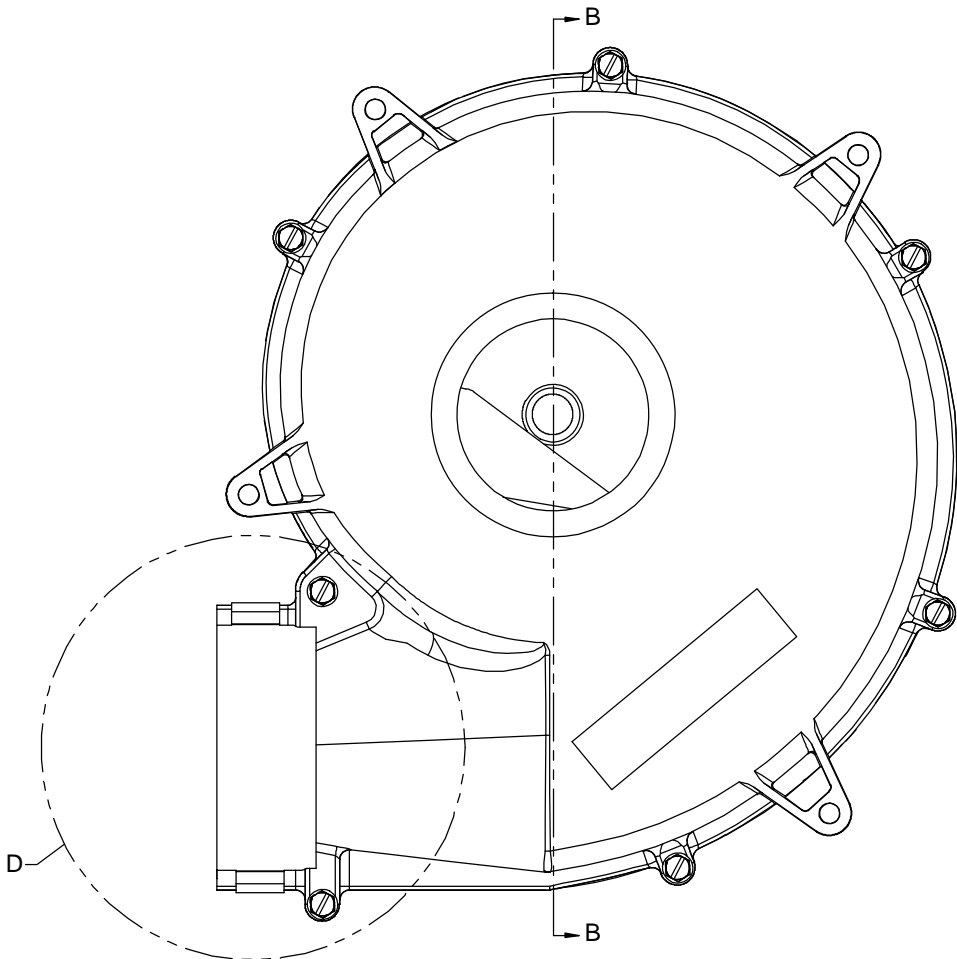
SECTION B-B



DETAIL D



DETAIL C



OUTLINE

DRAWING REVISION EB	REVISION BY FDP	DATE 8/24/2018	TOLERANCES UNLESS OTHERWISE SPECIFIED: DEC. INCH mm X ±0.1 [±2.5] XX ±0.01 [±0.25] XXX ±0.005 [±0.127] XXXX ±0.0005 [±0.0127] REMOVE BURRS & BREAK SHARP EDGES: .003/.015 [0.076/.381] X 45° CORNER FILLETS: R.02 [.51] MACHINED SURFACES: 125/ INCH/ mm mm SHOWN IN [BRACKETS]	DRAWN BY SED	DATE 3/18/2015	APPROVED BY MLM	DATE 3/18/2015	REFERENCE	THIRD ANGLE PROJECTION	SIZE D	DRAWING NUMBER 70625676	PROCESS/FINISH	SHEET 2 OF 2
ECO-0149297	APPROVED BY SED	DATE 8/24/2018	ECO DESCRIPTION CHANGED HEAD OF BOLT DIRECTION	PROPRIETARY AND CONFIDENTIAL INFORMATION: THIS DOCUMENT IS THE PROPERTY OF REGAL BELOIT AMERICA, INC. CONCEPTS AND CONTENTS ARE OWNERS PROPRIETARY INFORMATION. ANY PERSON, CORPORATION OR OTHER FIRM RECEIVING IT IS DEEMED, BY RECEIVING IT, TO AGREE THAT IT, AND/OR ANY PART OF IT, SHALL NOT BE DISCLOSED TO ANY PERSON, CORPORATION OR OTHER ENTITY, DUPLICATED, AND/OR USED, EXCEPT AS EXPRESSLY APPROVED IN WRITING IN ADVANCE BY OWNER. THIS DOCUMENT SHALL BE RETURNED TO OWNER UPON REQUEST. IT MAY BE SUBJECT TO CERTAIN RESTRICTIONS UNDER APPLICABLE EXPORT CONTROL LAWS AND REGULATIONS.	DATE 3/18/2015	APPROVED BY MLM	DATE 3/18/2015	REFERENCE	THIRD ANGLE PROJECTION	SIZE D	DRAWING NUMBER 70625676	PROCESS/FINISH	SHEET 2 OF 2