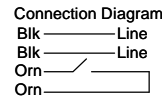


THERMALLY PROTECTED  
CLASS "B" INSULATION  
416 SS SHAFT  
SEALED BALL BEARING

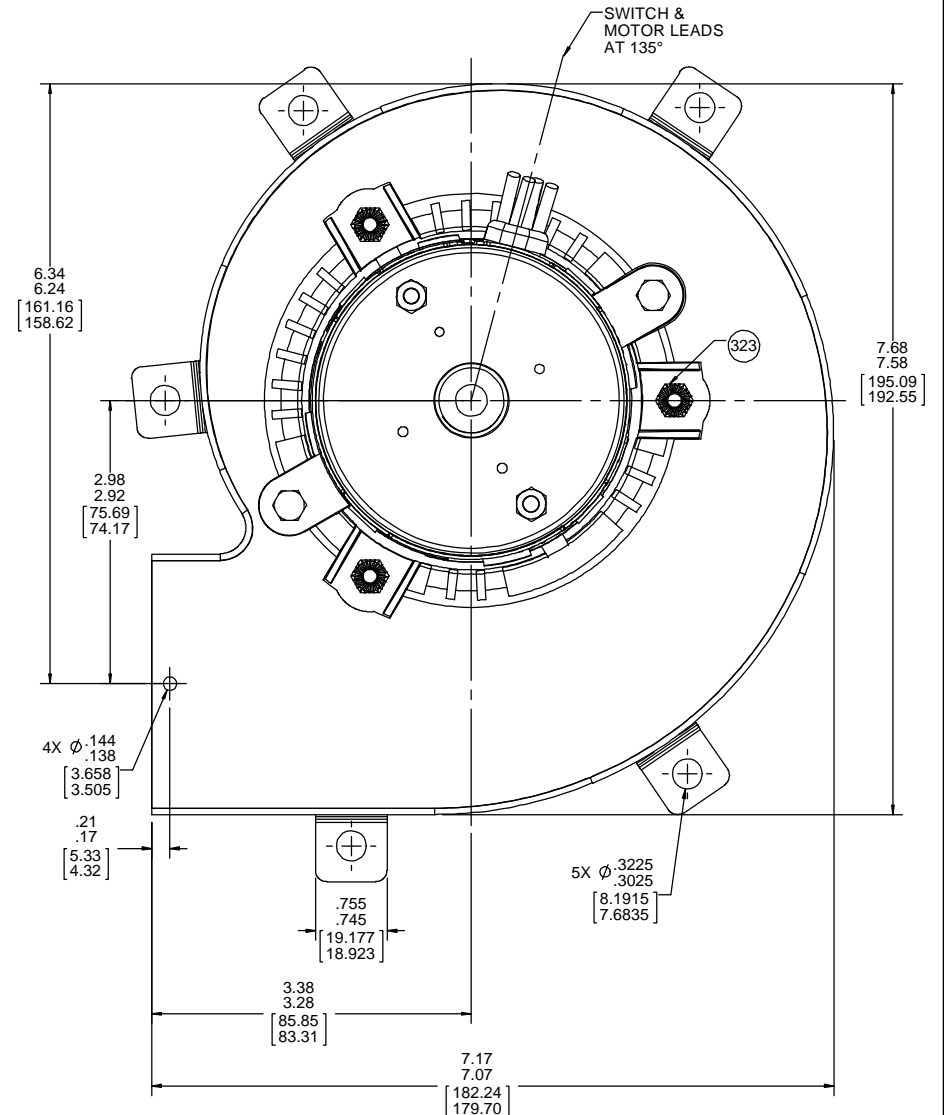
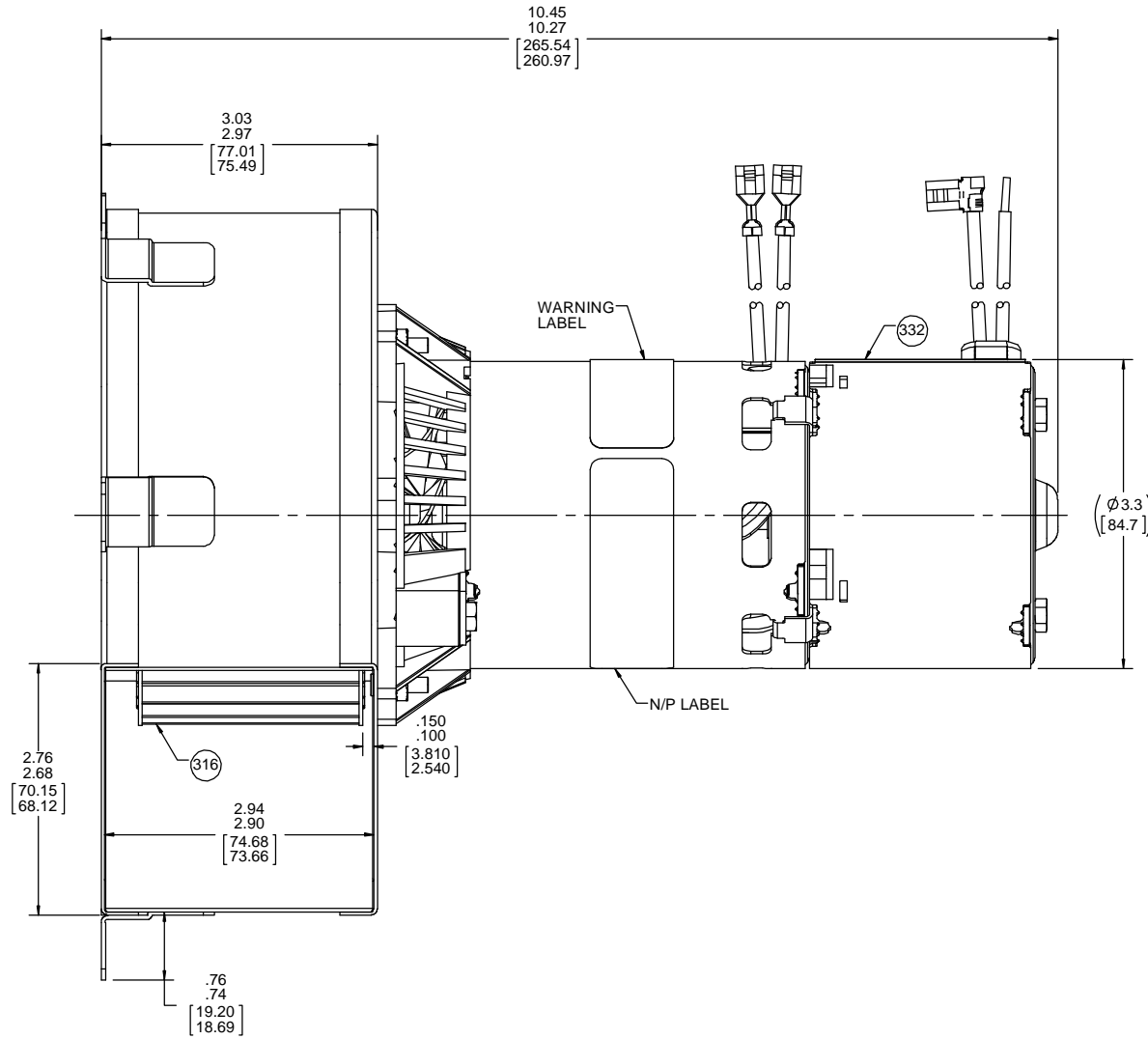
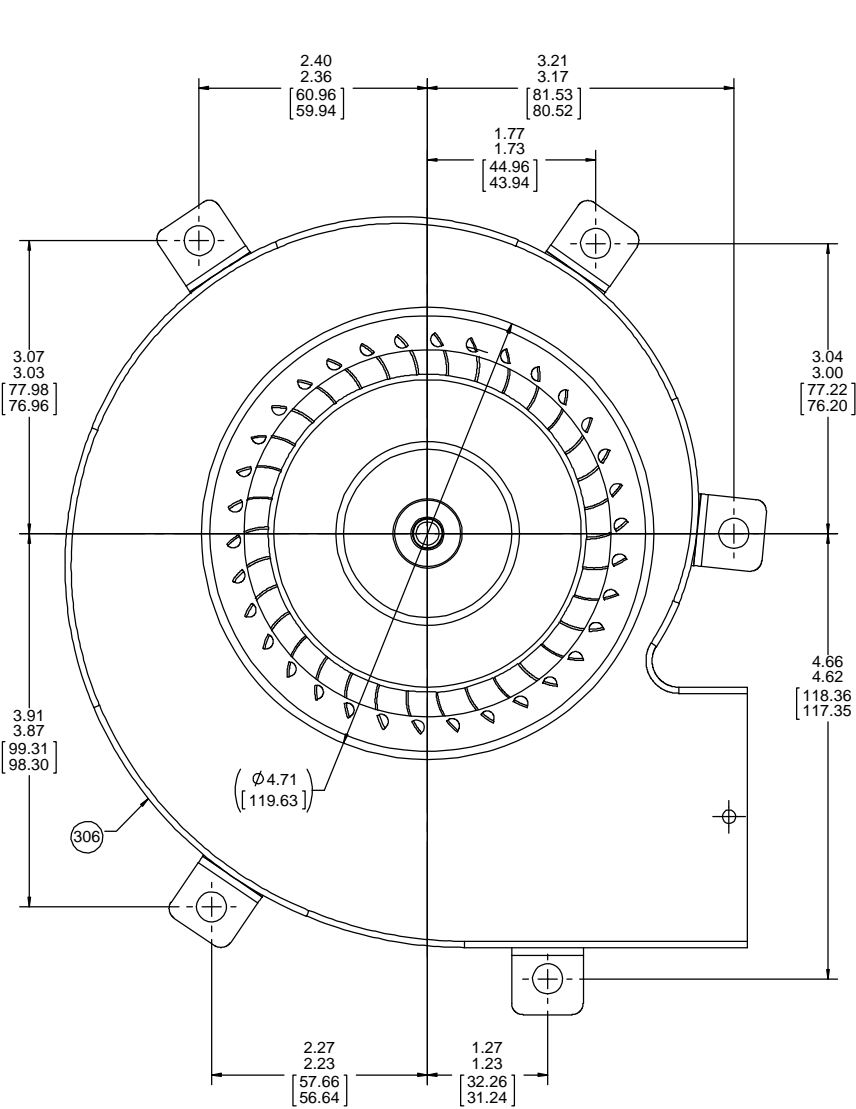
APPLICATION:	DISTRIBUTION	B	LA	FR	A	S	C	E	B	A
CUSTOMER:	FASCO DIST.	12	21	34	V	07	BK	5	0	0
CUSTOMER PN:	A244									

- NOTES:
- NO STA-LOC REQUIRED ON IMPELLER.
  - SWITCH MUST MAKE CONTACT BETWEEN 1800-2500 RPM AS SPEED INCREASES AND "BREAK" 50-500 RPM BELOW ACTUAL MAKE.
  - SWITCH MECHANISM MUST GIVE QUIET OPERATION ABOVE 2500 RPM.
  - SHIP (1) PC 377 GASKET IN EACH CONTAINER.
  - INSPECTION TEST FIXTURING IS REQUIRED.
  - PACK 1 PER CONTAINER, 27 MAX. PER PALLET, PACKING ASSY. 87854925, 9 CONTAINERS PER LAYER, 3 LAYERS PER PALLET, PER 88834200 AND 88834408.
  - CARTON LABELS MUST ALL FACE ONE DIRECTION TOWARD THE OPEN END OF THE PALLET. SEE 88834408.
  - NO PACKAGING TAPE OVER CARTON LABEL.



LEAD MATERIAL  
18 GA. 125°C 4/64 INSUL.  
X-LINKED POLY.  
(2) BLACK  
40.00/38.00 [1016.00/965.20]  
W/FSPADE TERM.  
AMP 42742-2

SWITCH LEAD MATERIAL  
18 GA. 105°C 4/64 INSUL.  
THERMO.  
(1) ORANGE  
30.00/28.00 [762.00/711.20]  
W/FLAG TERM.  
AMP 42742-2  
(1) ORANGE  
30.00/28.00 [762.00/711.20]  
.56/.44 [14.22/11.18] STRIP



TYPICAL PERFORMANCE TEST DATA WITH 1/16 INLET RESTICTOR			
AT 230 VOLTS 60 Hz			
	RPM	WATTS	AMPS
	3448	92	.72
BLOWER WEIGHT	7 1/2 LBS.		ENDPLAY .XX/XX

DRAWING REVISION AA	REVISION BY MLS	DATE 11/27/2017	TOLERANCES UNLESS OTHERWISE SPECIFIED: DEC. INCH mm ANGLE .X $\pm 0.1$ [2.5] .XX $\pm 0.01$ [0.25] .XXX $\pm 0.005$ [0.127] XXXX $\pm 0.0005$ [0.0127]	DRAWN BY MLS	DATE 11/27/2017	APPROVED BY sdm	DATE 11/27/2017	REFERENCE	THIRD ANGLE PROJECTION	SIZE D	DRAWING NUMBER 702111709	SHEET 1 OF 1
ECO-0135151			REMOVED TO SOLIDWORKS	APPROVED BY sdm			DATE 11/27/2017			MATERIAL FLAT BLACK		
ECO DESCRIPTION			REMOVED TO SOLIDWORKS	APPROVED BY sdm			DATE 11/27/2017			DESCRIPTION OUTLINE BLOWER ASSY		
<small>PROPRIETARY AND CONFIDENTIAL INFORMATION - THIS DOCUMENT IS THE PROPERTY OF REGAL BELOIT AMERICA, INC. CONSENT AND CONFIRMATION OF OWNERS PROPRIETARY INFORMATION, ANY PERSON, CORPORATION OR OTHER FIRM RECEIVING IT IS DEEMED, BY RECEIVING IT, TO AGREE THAT IT, AND/OR ANY PART OF IT, SHALL NOT BE DISCLOSED TO ANY PERSON, CORPORATION OR OTHER ENTITY, DUPLICATED, AND/OR USED, EXCEPT AS EXPRESSLY APPROVED IN WRITING IN ADVANCE BY OWNER. THIS DOCUMENT SHALL BE RETURNED TO OWNER UPON REQUEST. IT MAY BE SUBJECT TO CERTAIN RESTRICTIONS UNDER APPLICABLE EXPORT CONTROL LAWS AND REGULATIONS.</small>												

Regal Beloit America, Inc.

OUTLINE BLOWER ASSY

PROCESS/FINISH  
FLAT BLACK

702111709