

NOTES:

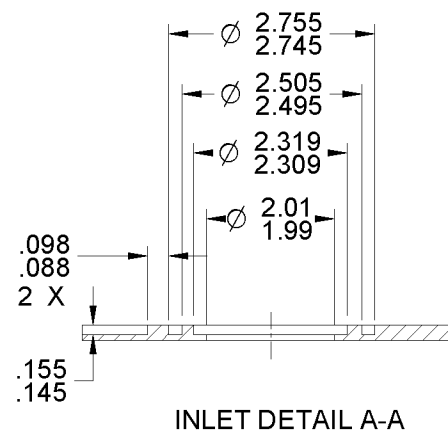
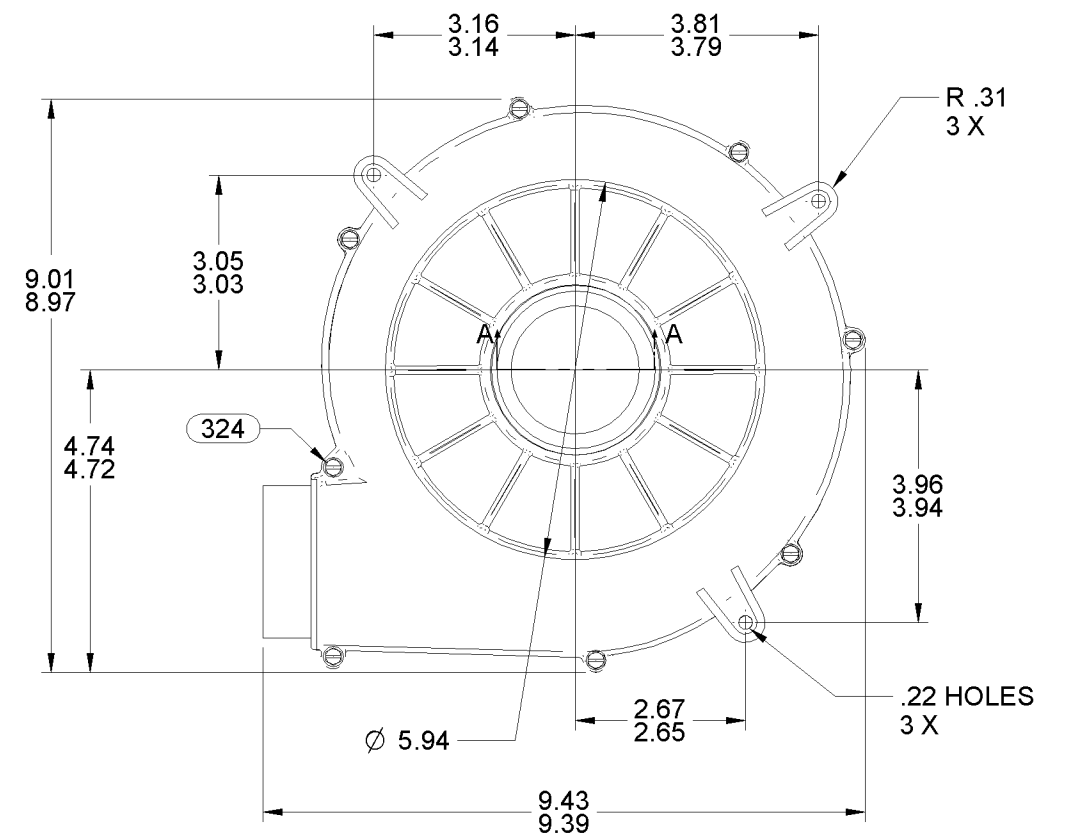
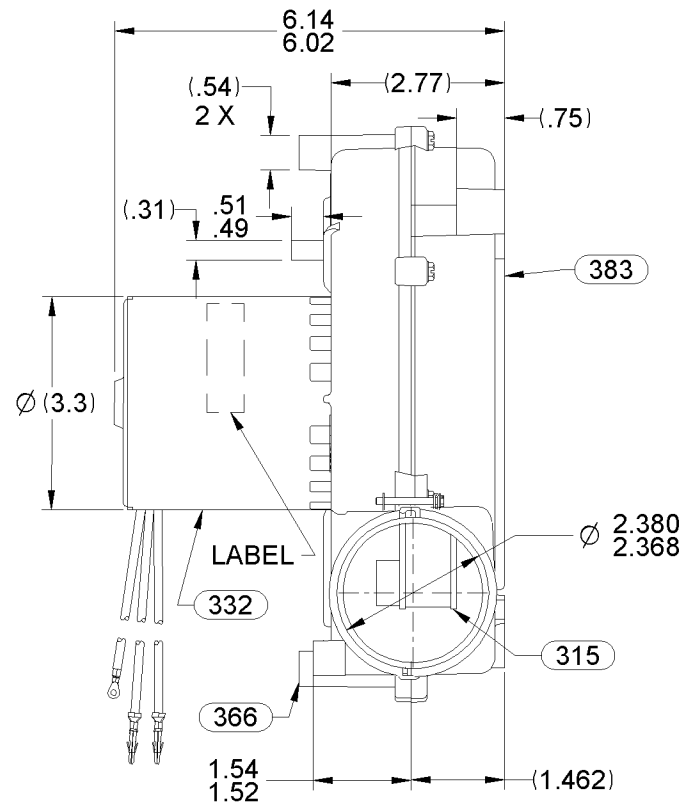
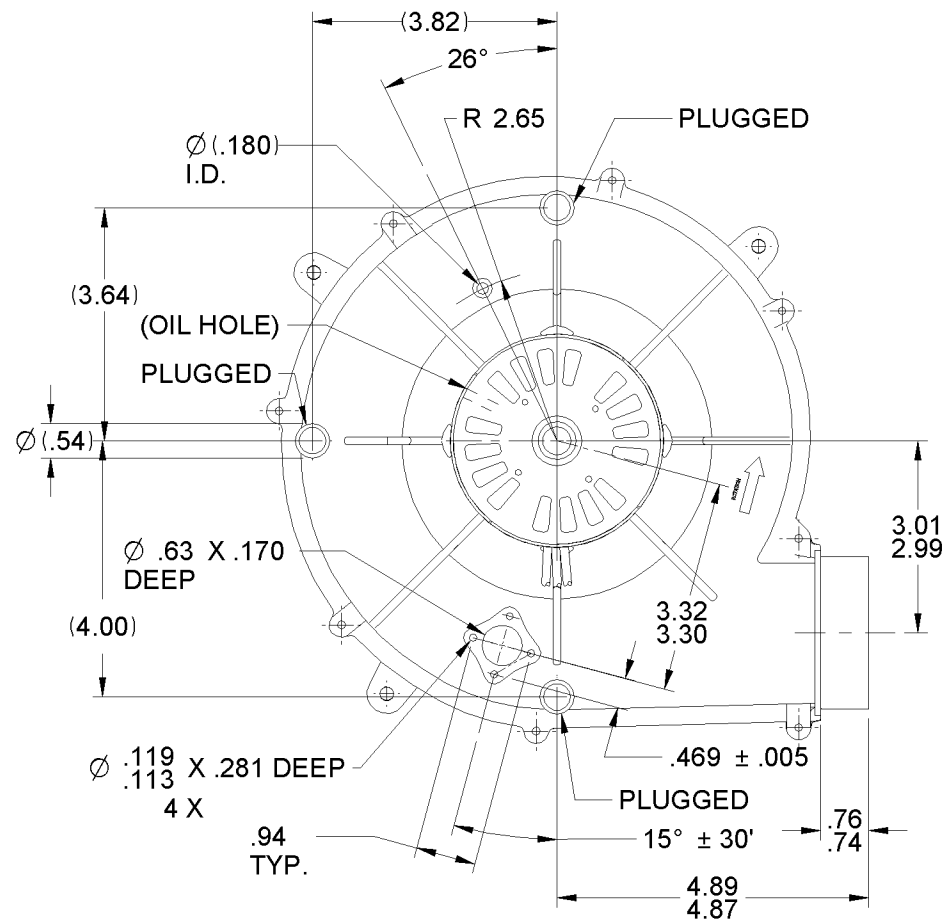
1. ALL DRAIN HOLES PLUGGED.
2. STATIC TAP HOLES TO BE FREE OF FLASH.
3. STATIC TAP READING TO BE -1.85 MINIMUM CORRECTED TO STANDARD AIR. (0.075 LB/FT<sup>3</sup>) WITH A 1.25 IN. INLET RESTRICTOR.
4. SHIP (1) PC 319 GASKET IN EACH CONTAINER.
5. INSPECTION TEST FIXTURING IS REQUIRED.
6. PACK 1 PER CONTAINER, 36 MAX. PER PALLET, PACKING ASSY.: 8785 4916, 12 CONTAINERS PER LAYER, 3 LAYERS PER PALLET, P.S. 8883 4200 AND P.S. 8883 4408.
7. CARTON LABELS MUST ALL FACE ONE DIRECTION TOWARD THE OPEN END OF THE PALLET. SEE P.S. 8883 4408.
8. NO PACKING TAPE OVER CARTON LABEL.

APPLICATION	DISTRIBUTION								
	B	LA	FR	A	S	C	E	B	A
	PF	21	30	F	05	DK	5	3	0
CUSTOMER	FASCO DIST.								
CUSTOMER PART NO.	A242								

THERMALLY PROTECTED  
CLASS "B" INSULATION  
416 S.S. SHAFT

LEAD MATERIAL  
18 GA., 125°C, 4/64 INS.  
X-LINKED POLY.  
(1) BLACK, (1) WHITE  
40.00/38.00 IN. LONG  
(2) 8903-9166 PIN TERMS.  
AMP #350538-1

GROUND LEAD  
18 GA., 125°C, 2/64 INS.  
X-LINKED POLY.  
(1) GREEN/YELLOW  
10.00/8.00 IN. LONG  
(1) 8902-0157 RING TERM.  
AMP #350436-2



TYPICAL PERFORMANCE TEST DATA WITH A 1.25 IN. DIA. INLET RESTRICTOR

AT 115 VOLTS 60 HZ.

ECO. NO.	REV.	DATE	APPROVAL		R.P.M.	WATTS	AMPS
4002723	04	07/22/2011	SDM/PLA	MAX.	3396	105	1.42
				MIN.	3340	98	1.34
				BLOWER WEIGHT			END PLAY
				4 3/8 LBS.			.030/.010

UNLESS OTHERWISE SPECIFIED DIMENSIONS ARE IN INCHES TOLERANCES ARE:  
FRACTIONS ± 1/16 DECIMALS .XX ± .01 ANGLES ± 1°  
.XXX ± .005

**FASCO** FASCO MOTORS GROUP  
AC MOTOR/BLOWER DIVISION

CONFIDENTIAL: DO NOT DUPLICATE OR DISCLOSE TO THIRD PARTIES WITHOUT WRITTEN PERMISSION OF FASCO MOTORS GROUP, AC MOTOR/BLOWER DIVISION.

TITLE			BLOWER ASSEMBLY		
SIZE	DWG. NO.		REV.		
B	7021 11707		04		
DO NOT SCALE DRAWING			SHEET 1 of 2		