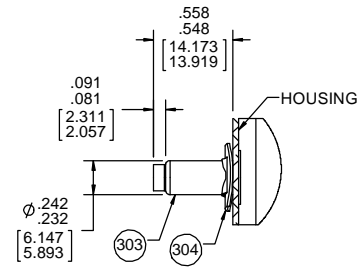


THERMALLY PROTECTED  
CLASS "B" INSULATION  
416 SS SHAFT

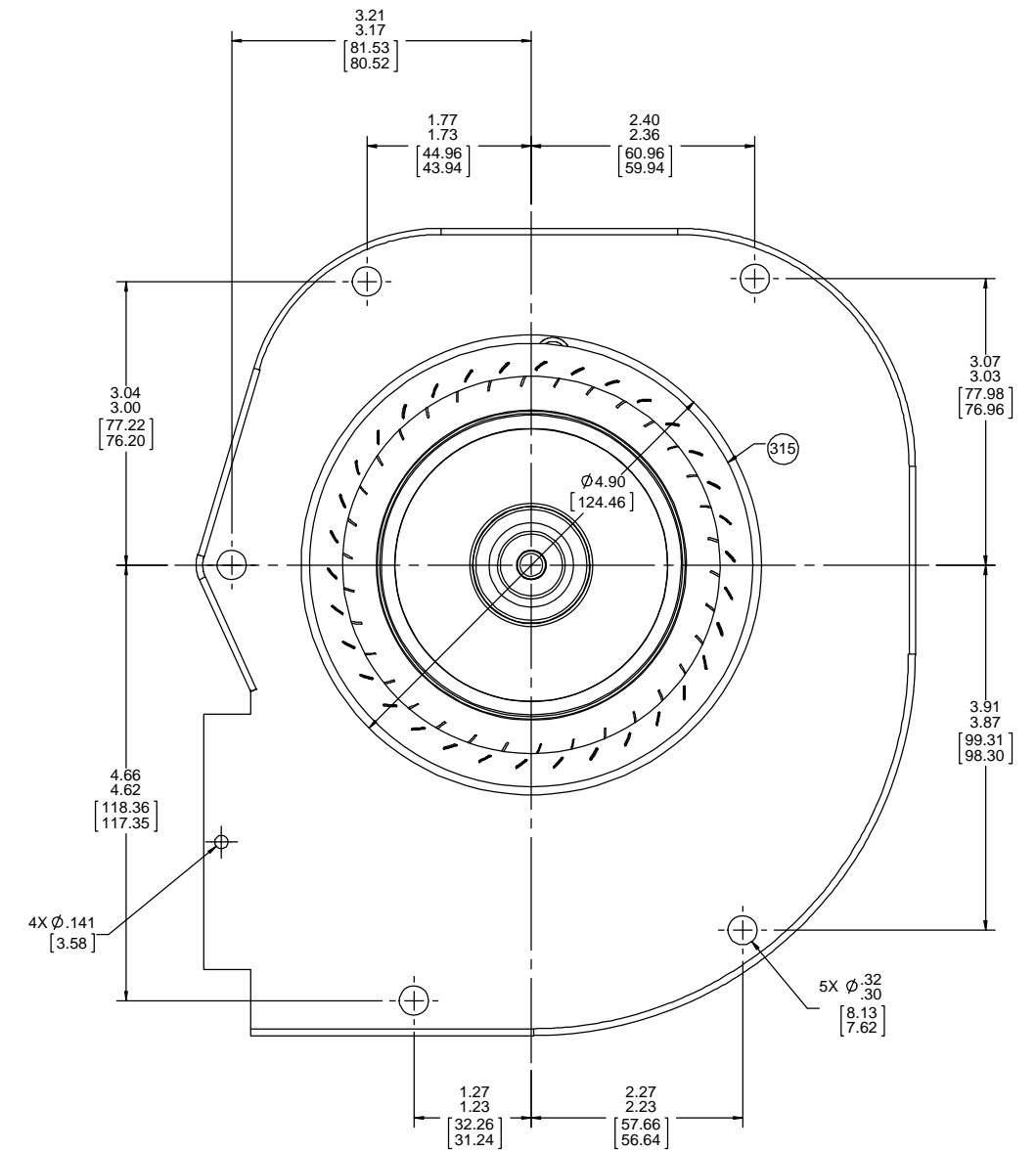
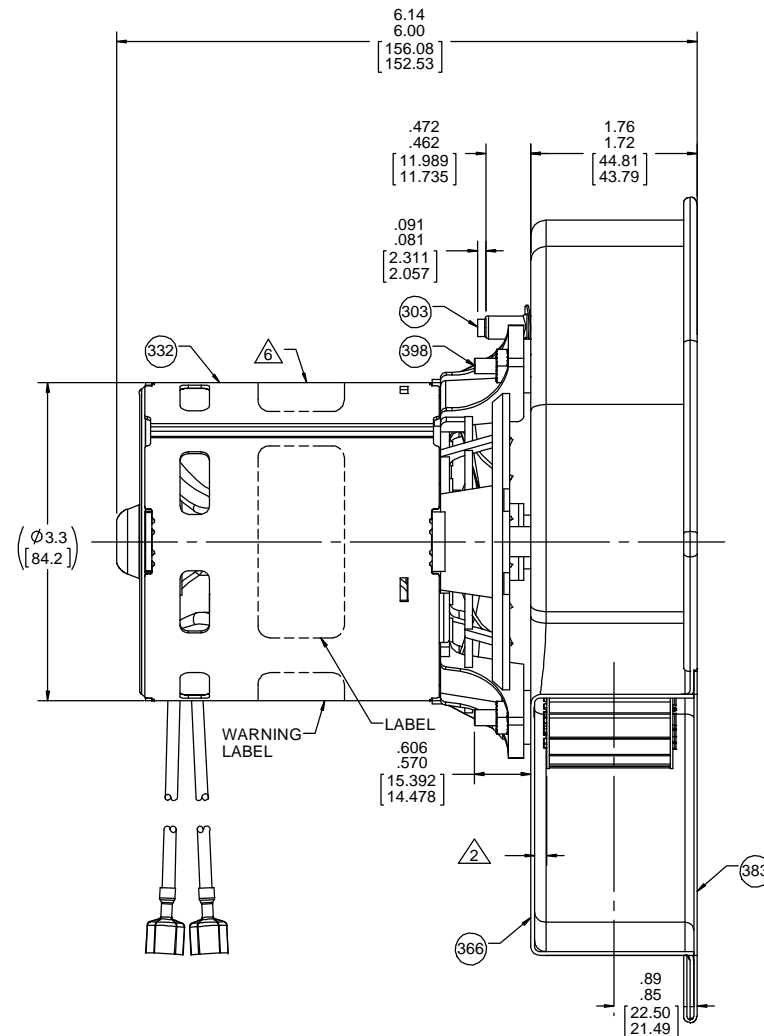
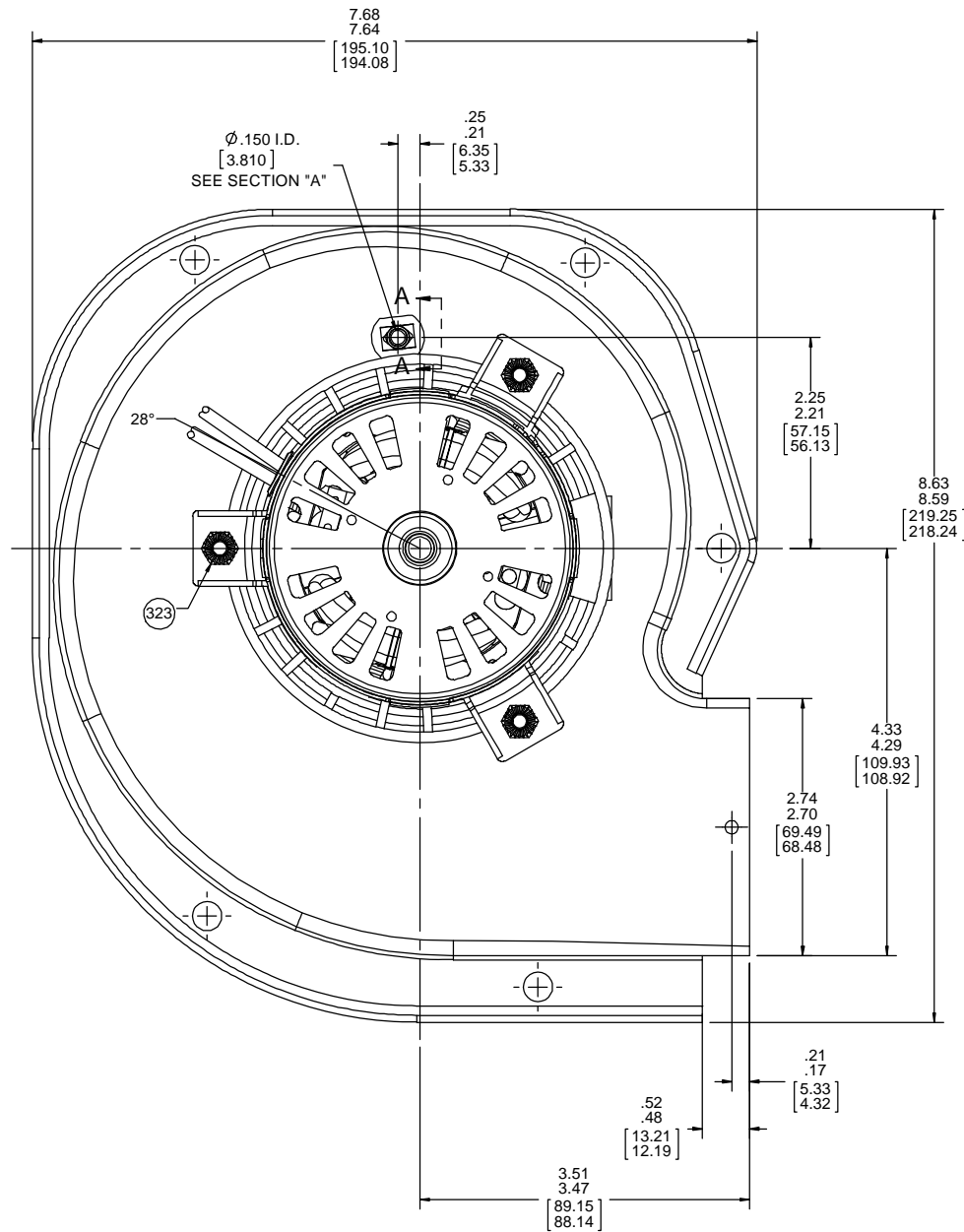
APPLICATION:	DISTRIBUTION	B	LA	FR	A	S	C	E	B	A
CUSTOMER:	FASCO DIST.	GS	21	47	V	05	CL	5	0	0
CUSTOMER PN:	A241									

LEAD MATERIAL  
18 GA. 125°C 2/64 INSUL.  
X-LINKED POLY.  
(2) BLACK  
7.00/5.00 [177.80/127.00]  
W/MSPADE TERM.  
AMP 2-520102-2

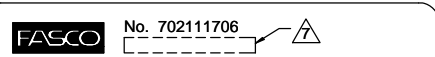
- NOTES:
1. IMPELLER MATERIAL: ALUMINIZED STEEL.
  2. DISTANCE FROM INSIDE OF HOUSING TO BLOWER WHEEL IS .160/.100 [4.064/2.540] WITH WHEEL PULLED AS CLOSE TO INLET AS SHAFT ENDPLAY ALLOWS.
  3. INSPECTION TEST FIXTURING IS REQUIRED.
  4. STATIC TAP READING IS TO BE -1.35" MINIMUM CORRECTED TO STANDARD AIR (0.075 LB/FT<sup>3</sup>) WITH A 1/16" INLET RESTRICTOR.
  5. GASKET NO. 68-23643-01-01, FASCO P/N 86804163 TO BE INCLUDED WITH EACH BLOWER.
  6. APPLY PC 373 LABEL TO MOTOR 90° FROM OIL HOLE.
  7. SERIAL NUMBER.
  8. PACK 1 PER CONTAINER, 9 CONTAINERS PER LAYER, 4 LAYERS PER PALLET, 36 MAX. PER PALLET, PACKING ASSY. 87854714, PER 88834200 AND 88834408.
  9. CARTON LABELS MUST ALL FACE ONE DIRECTION TOWARD THE OPEN END OF THE PALLET. SEE 88834408.
  10. NO PACKING TAPE OVER CARTON LABEL.
  11. BLOWER - NATURAL, MOTOR - FLAT BLACK.



SECTION A-A



61305275



Assembled in Mexico  
Model A241

AVERAGE PERFORMANCE TEST DATA WITH 1/16" INLET RESTRICTOR			
AT 230 VOLTS 60 HZ			
RPM	WATTS	AMPS	
3377	77.2	.56	
BLOWER WEIGHT 5 LBS.		ENDPLAY .XX/XX	

DRAWING REVISION LA	REVISION BY MLS	DATE 5/17/2018	TOLERANCES UNLESS OTHERWISE SPECIFIED: DEC. INCH mm ANGLE .X ±0.1 (#2.5) ±1° .XX ±0.01 (#0.25) .XXX ±0.005 (#0.127) XXXX ±0.0005 (#0.0127)	DRAWN BY MLS	DATE 6/8/2016	APPROVED BY PLA	DATE 6/8/2016	REFERENCE	THIRD ANGLE PROJECTION	SIZE D	DRAWING NUMBER 702111706	SHEET 1 OF 1
ECO-0144255			APPROVED BY BAA			DATE 5/17/2018			REGAL BELLOI AMERICA, INC.			
ECO DESCRIPTION UPDATED BLOWER PACKING			CORNER FILLETS: R.02 [5.1]			MATERIAL BLOWER ASSY			PROCESS/FINISH SEE NOTES			