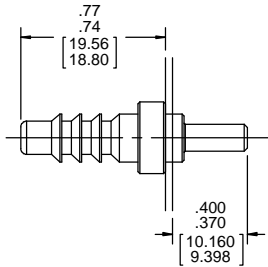


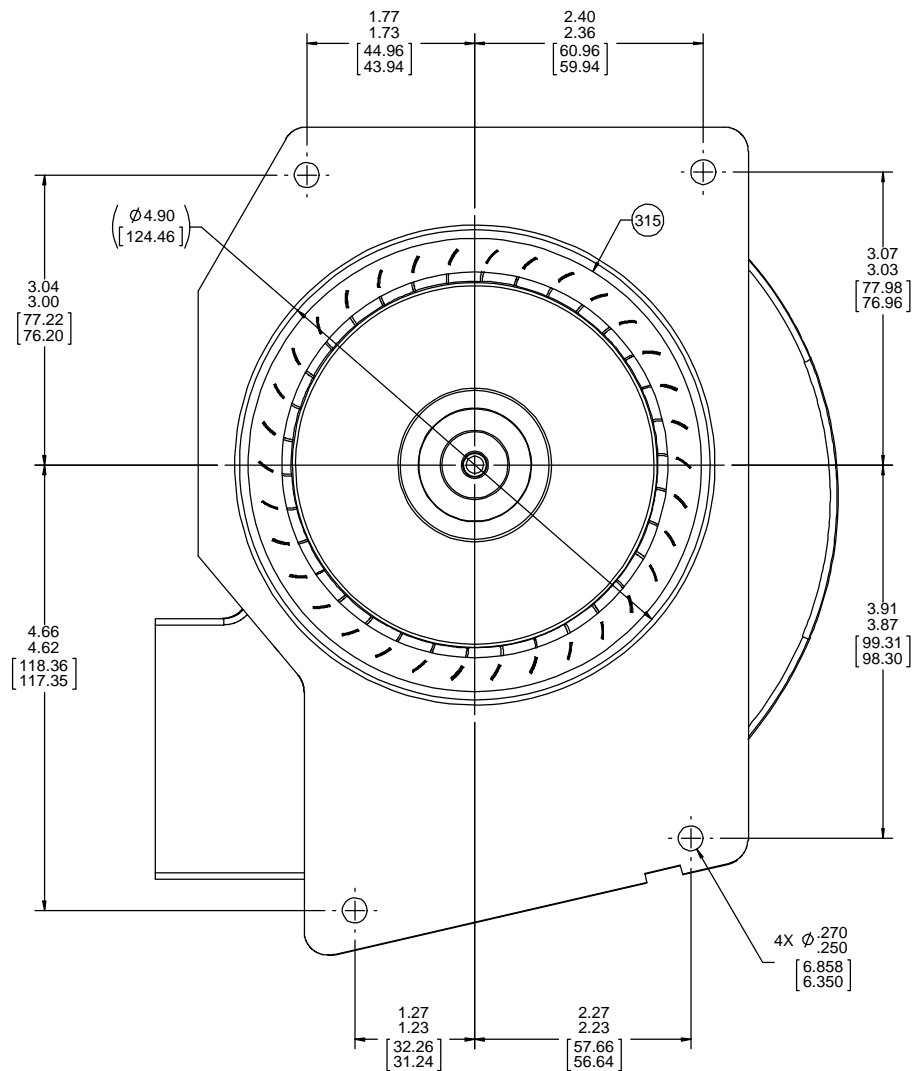
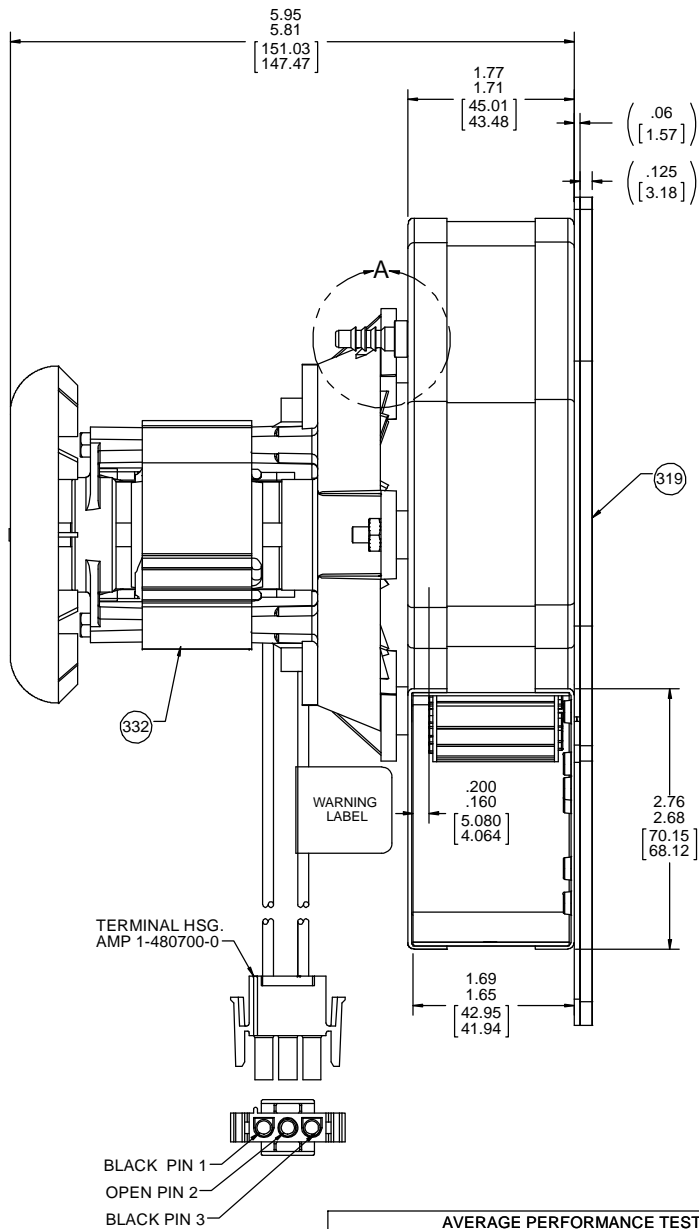
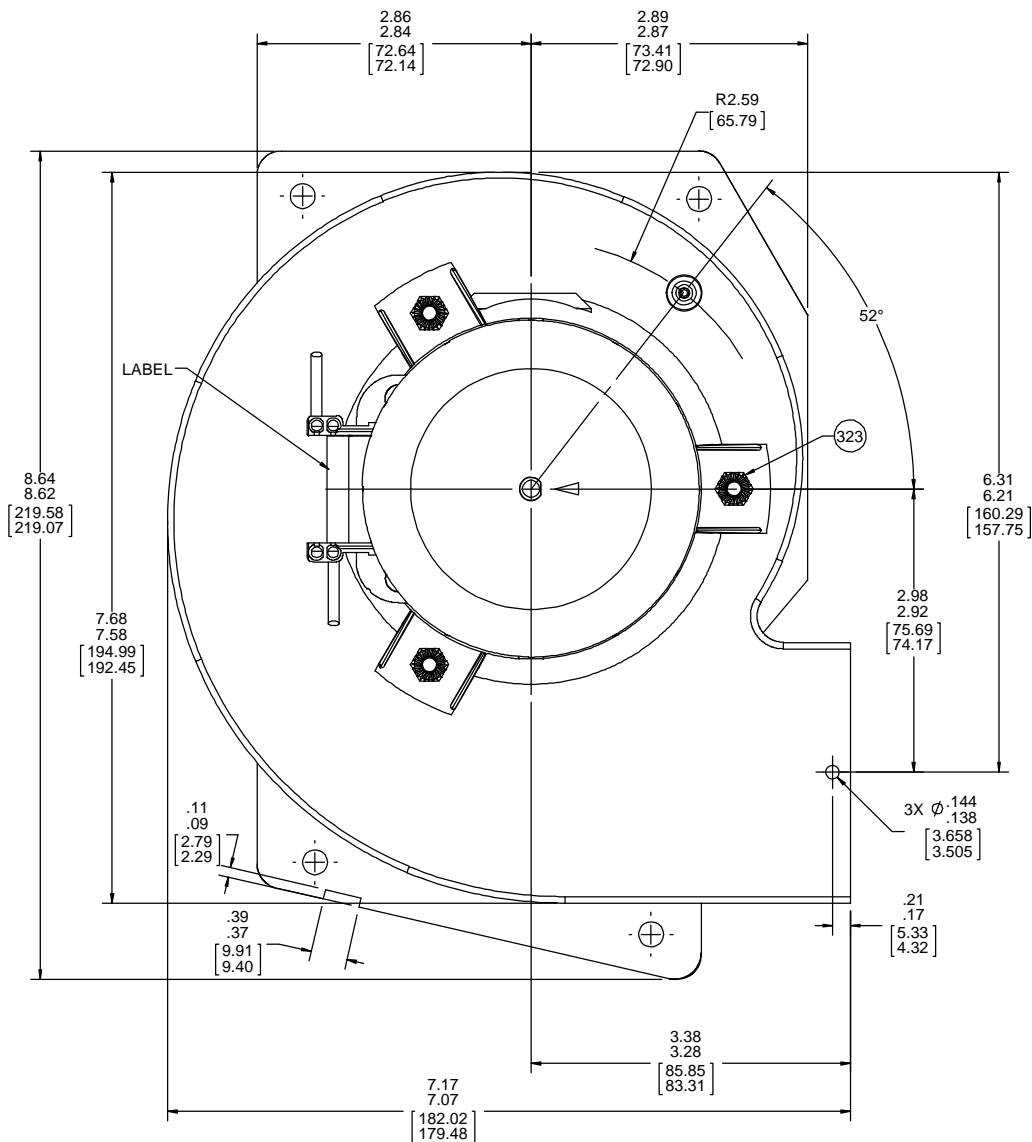
THERMALLY PROTECTED  
CLASS "B" INSULATION  
416 SS SHAFT  
SEALED BALL BEARING

APPLICATION:	GAS FURNACE	B	LA	FR	A	S	C	E	B	A
CUSTOMER:	FASCO DIST.	12	58	48	X	17	OA	5	0	0
CUSTOMER PN:	A226									


LEAD MATERIAL  
18 GA. 125°C 2/64 INSUL.  
X-LINKED POLY. (2) BLACK  
7.00/6.00 [177.80/152.40]  
SOCKET TERMS.  
AMP 350536-1



## DETAIL A



AVERAGE PERFORMANCE TEST DATA WITH 1 5/16" INLET RESTRICTOR			
AT 115 VOLTS 60 Hz			
	RPM	WATTS	AMPS
	3224	66	1.18
BLOWER WEIGHT 5 LBS.			ENDPLAY .XX/.XX

DRAWING REVISION AA ECO-0141606 REMOVED AUTOMATED TEST NOTE. REDRAWN PROPERTY DATA AND CONFIDENTIAL INFORMATION IS THE PROPERTY OF REGAL BELLOIT AND COMPANY, INC. AND IS NOT TO BE DISCLOSED OR REPRODUCED IN ANY MANNER WITHOUT THE WRITTEN PERMISSION OF REGAL BELLOIT AND COMPANY, INC. ANY REPRODUCTION OR REUSE OF THIS INFORMATION WITHOUT THE WRITTEN PERMISSION OF REGAL BELLOIT AND COMPANY, INC. IS STRICTLY PROHIBITED. ANY REPRODUCTION OR REUSE OF THIS INFORMATION WITHOUT THE WRITTEN PERMISSION OF REGAL BELLOIT AND COMPANY, INC. IS STRICTLY PROHIBITED. ANY REPRODUCTION OR REUSE OF THIS INFORMATION WITHOUT THE WRITTEN PERMISSION OF REGAL BELLOIT AND COMPANY, INC. IS STRICTLY PROHIBITED.	REVISION BY JMG DATE 5/11/2018	DATE 5/11/2018 SPEC INCH XXX 0.01 [0.025] XXX 0.005 [0.0127] XXX 0.005 [0.0127] REMOVE BURRS & BREAK SHARP EDGES: 003/15 [076/381] CORNER RADIUS: R.02 [51] MACHINED SURFACES: [125] mm SHOWN IN BRACKETS	TOLERANCES UNLESS OTHERWISE SPECIFIED: ANGLE 21° 3/2" MIN	DRAWN BY PLA DATE 5/11/2018 APPROVED BY JMG DATE 5/11/2018 REFERENCE THIRD ANGLE PROJECTION SIZE 1:1	 Regal Beloit Auto, Inc. DESCRIPTION OUTLINE BLOWER MATERIAL 6061 ALUMINUM FINISH NATURAL QUANTITY 70581800	SHEET 1 OF 1
---	---	--	--	---	---	-----------------