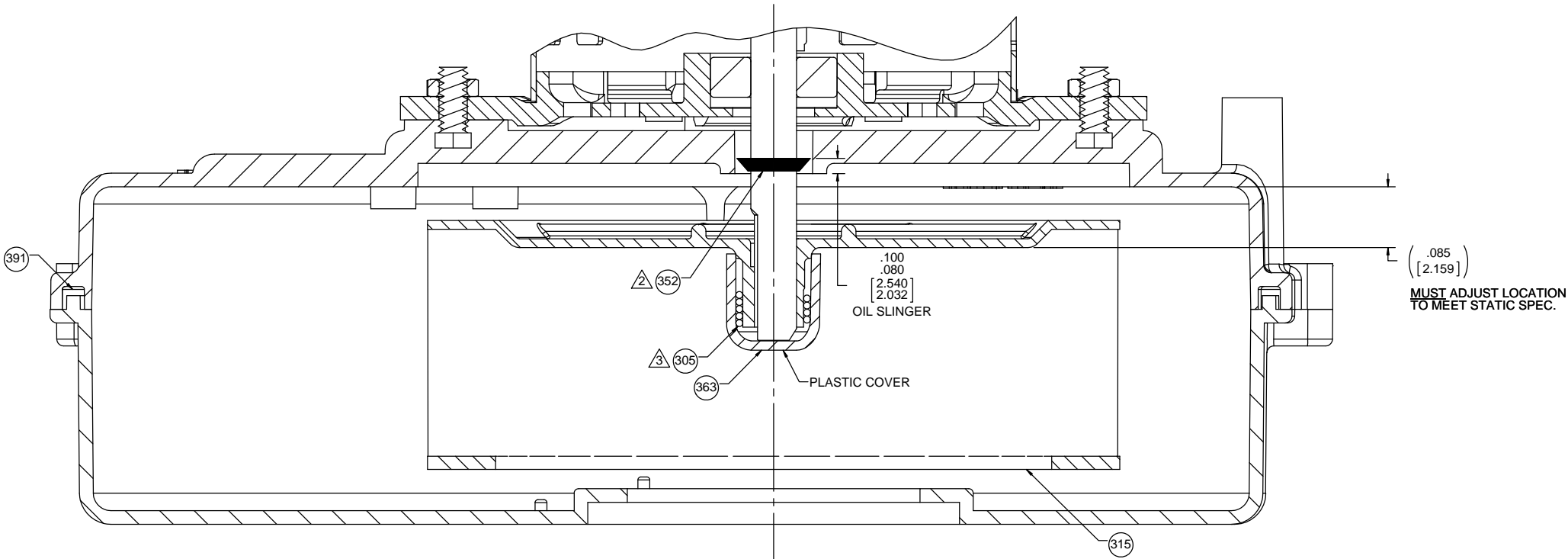


- NOTES:
1. LINE HOUSING HALVES WITH THREE PILOTS. SECURE WITH SEVEN SCREWS. TORQUE SCREWS TO 7 IN.LBS. NO AIR GAPS ALLOWED BETWEEN HOUSING HALVES. NOTE: PLASTIC STRIPS AT TORQUE SETTINGS ABOVE 7 IN.LBS.
  2. OIL SLINGER MUST BE LOCATED ON SHAFT AS SHOWN BELOW.
  3. BEFORE ASSEMBLY OF PC 363 END CAP, ASSEMBLE TORSION SPRING TO IMPELLER. PRESS IMPELLER ASSY. ON SHAFT AND LOCATE AS SHOWN BELOW.
  4. ALL UNITS MUST BE TESTED FOR SPEED AND , WHERE EQUIPPED WITH STATIC TAP, FOR STATIC VACUUM TO THE STANDARDS LISTED ON BLOWER TOP COPY.
  5. WHEN EQUIPPED WITH A WATER SEAL, EVERY 20TH BLOWER IS TO BE CHECKED FOR WATER LEAKAGE. IF LEAKERS ARE DISCOVERED, CONTACT ENGINEERING. USE 1/3 PARTS MR. BUBBLE TO 2/3 PARTS WATER FOR LEAK TEST.



DRAWING REVISION		REVISION BY	DATE	TOLERANCES UNLESS OTHERWISE SPECIFIED:		DRAWN BY	Regal Beloit America, Inc.
N		SDM	2/7/2017	DEC.	INCH	SDM	
ECO-0117556		APPROVED BY	DATE	.X	±0.1	DATE	2/6/2017
ECO DESCRIPTION		PLA	2/7/2017	.XX	±0.01	APPROVED BY	PLA
CONVERT TO SOLID WORKS				.XXX	±0.005	DATE	2/7/2017
COPYRIGHT REGAL BELOIT AMERICA, INC. ALL RIGHTS RESERVED.				XXXX	±0.0005	REFERENCE	
PROPRIETARY AND CONFIDENTIAL INFORMATION - THIS DOCUMENT IS THE PROPERTY OF REGAL BELOIT AMERICA, INC. (ORNEY) AND CONTAINS OWNERS PROPRIETARY INFORMATION. ANY PERSON, CORPORATION OR OTHER FIRM RECEIVING IT IS DEEMED, BY RECEIVING IT, TO AGREE THAT IT, AND/OR ANY PART OF IT, SHALL NOT BE DISCLOSED TO ANY PERSON, CORPORATION OR OTHER ENTITY, DUPLICATED, AND/OR USED, EXCEPT AS EXPRESSLY APPROVED IN WRITING IN ADVANCE BY OWNER. THIS DOCUMENT SHALL BE RETURNED TO OWNER UPON REQUEST. IT MAY BE SUBJECT TO CERTAIN RESTRICTIONS UNDER APPLICABLE EXPORT CONTROL LAWS AND REGULATIONS.				REMOVE BURRS & BREAK SHARP EDGES: .003/.015 [ .076/ .391] X 45° CORNER FILLETS: R.02 [ .51] MACHINED SURFACES: 125 / 3.2 INCH √ mm 3.2 / mm SHOWN IN [BRACKETS]		THIRD ANGLE PROJECTION	
						SIZE	D
						DRAWING NUMBER	702111874
						PROCESS/FINISH	SEE NOTE 17
						SHEET	2 OF 2