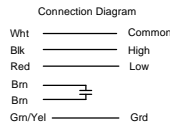


ORACLE PART REV. 004

- NOTES:
- ASSEMBLE INLET SHELL TO MOUNTING SHELL ASSEMBLY AND SECURE WITH (7) PC 324 SCREWS. TRIM EXCESS ROPE SEALANT FROM FACE OF BLOWER EXHAUST.
 - INSPECTION TEST FIXTURE IS REQUIRED.
 - STATIC TAP HOLES TO BE FREE OF FLASH.
 - STATIC TAP READING TO BE 2.1 TO 2.4 AFTER CORRECTION TO STD. AIR (0.075 LB FT³) WITH 1 5/16 INLET RESTRICTOR.
 - PACK 1 PER CONTAINER, 12 CONTAINERS PER LAYER, 3 LAYERS PER PALLET, 36 MAX PER PALLET, PACKING ASSY: 87854916
 - CARTON LABELS MUST ALL FACE ONE DIRECTION TOWARD THE OPEN END OF THE PALLET. SEE P.S. 88834408.
 - NO PACKING TAPE OVER CARTON LABEL.



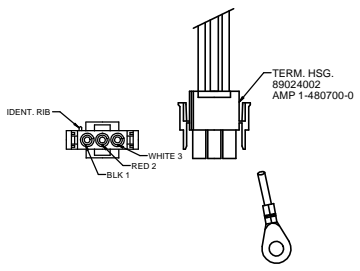
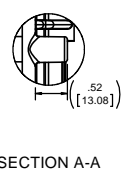
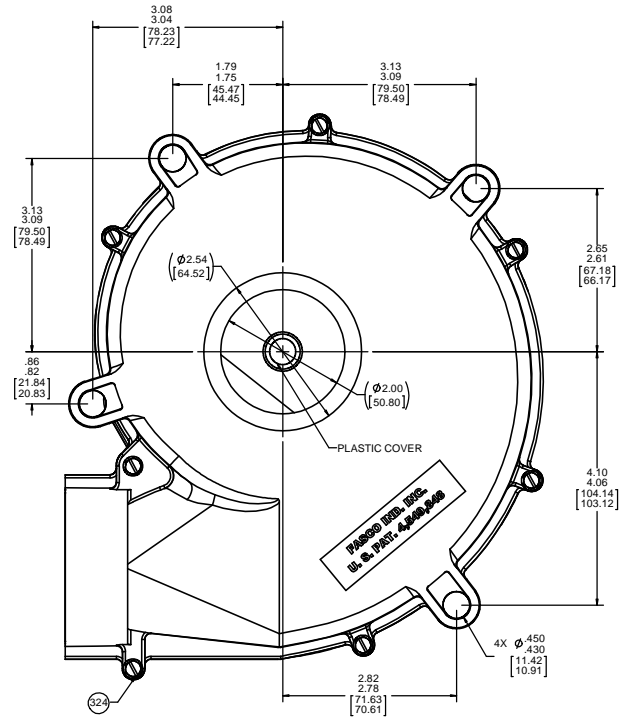
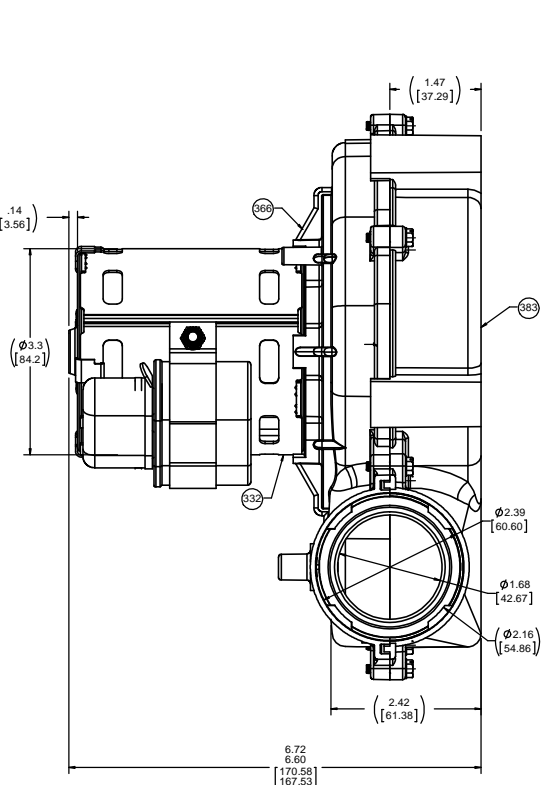
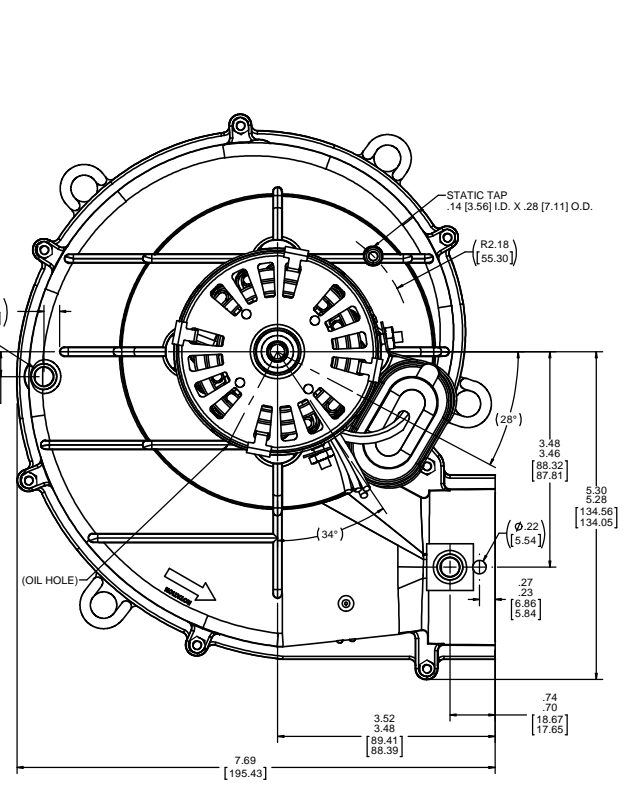
THERMALLY PROTECTED CLASS "B" INSULATION
 303 SS SHAFT

APPLICATION:	DISTRIBUTION	B	LA	FR	A	S	C	E	B	A
CUSTOMER:	FASCO DIST.	PB	62	30	V	05	FB	6	3	0
CUSTOMER PN:	A224									

LEAD MATERIAL
 18 GA. 125°C 2/64 INSUL.
 X-LINKED POLY
 BLK. RED. WHT
 7.005.00 1777.80/127.00 IN. [mm] LONG
 W/PIN TERMS. 89039085
 AMP 350218-1

GROUND LEAD
 18 GA. 125°C 2/64 INSUL.
 X-LINKED POLY
 GRN/YEL
 12.00/10.00 [304.80/254.00] IN. [mm] LONG
 W/RING TERM. 89039251
 AMP 60700-2

CAPACITOR LEADS
 18 GA. 125°C 2/64 INSUL.
 X-LINKED POLY
 (2) BRN
 W/FLAG TERMS. 89034045
 AMP 42742-2



	RPM	WATTS	AMPS
HIGH	3442	92	.83
LOW	1989	60	.58

4MFD/340 VAC CAPACITOR

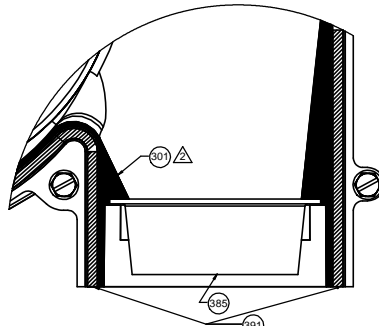
BLOWER WEIGHT LBS. ENDPLAY .030/.010

DRAWING REVISION: E	PROPOSED DATE: 4/28/2015	APPROVED DATE: 4/28/2015	REACTIVATE
DESIGN: ECO-0076281	APPROVED BY: SDM	DATE: 4/28/2015	DESCRIPTION: REACTIVATE
TOLERANCES UNLESS OTHERWISE SPECIFIED:		ANGLE: 1/8"	REGAL BELLOTT AMERICA, INC.
XXX .001	XXX .01	XXX .05	DESCRIPTION: BLOWER ASSY
XXX .0005	XXX .0125	XXX .015	DATE: 4/28/2015
XXX .0005	XXX .015	XXX .015	PROCESSING: FLAT BLACK
REMOVE BURRS & BREAK SHARP EDGES: .0005 [0.0125] 1X		DATE: 4/28/2015	PRODUCTION: 70625673
CORNER FILLETS: R.02 [.51]		DATE: 4/28/2015	PRODUCTION: 70625673
MACHINED SURFACES: 3.2		DATE: 4/28/2015	PRODUCTION: 70625673
FINISH: 3.2		DATE: 4/28/2015	PRODUCTION: 70625673
FINISH: 3.2		DATE: 4/28/2015	PRODUCTION: 70625673

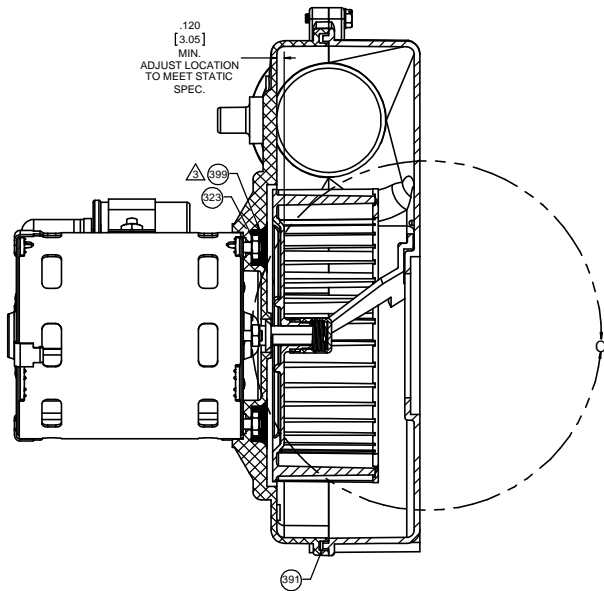
ORACLE PART REV. 004

NOTES:

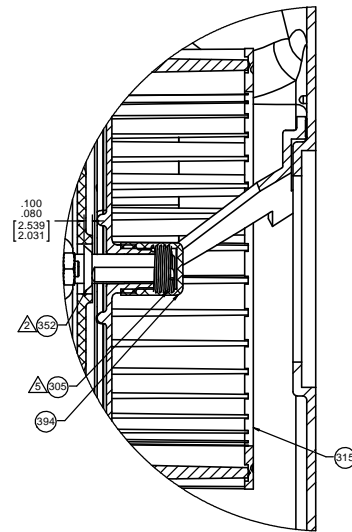
- ▲ LAY PC 391 ROPE SEALANT IN CHANNEL PROVIDED IN MOUNTING SHELL.
- ▲ APPLY PC 301 RTV SEALANT TO SHADED AREA OF MOUNTING SHELL AS SHOWN ON SECTION 'B' BEFORE SCREW ASSEMBLY PER P.S. 88834415.
- 3. LINE UP HOUSING WITH THREE PILOTS, SECURE WITH SEVEN SCREWS. TORQUE SCREWS TO 7 IN. LBS. MAX. NO AIR GAPS ALLOWED BETWEEN HOUSING HALVES. NOTE: PLASTIC STRIPS AT ATORQUE SETTINGS ABOVE 7 IN. LBS.
- ▲ OIL SLINGER MUST BE LOCATED ON SHAFT AS SHOWN BELOW.
- ▲ BEFORE ASSEMBLING IMPELLER TO SHAFT, PRESS PC 399 ROPE SEALANT AGAINST EXPOSED FACE OF NUTS TO PROTECT FROM CORROSIVES.
- 6. WHEN EQUIPPED WITH WATER SEAL, EVERY 20TH BLOWER IS TO BE CHECKED FOR WATER LEAKAGE. IF LEAKERS ARE DISCOVERED CONTACT ENGINEERING. (USE 1/3 PARTS MR. BUBBLE WITH 2/3 PARTS WATER FOR LEAK TEST.
- ▲ BEFORE ASSEMBLY OF PC 394 END CAP, ASSEMBLE TORSION SPRING TO IMPELLER, PRESS IMPELLER ASSY. ON SHAFT AND LOCATE AS SHOWN BELOW. LOCATION OF IMPELLER MUST BE HELD WITH ENDPLAY OF MOTOR PULLED OUT.
- 8. ALL UNITS MUST BE TESTED FOR SPEED AND, WHERE EQUIPPED WITH STATIC TAP, FOR STATIC VACUUM TO THE STANDARDS LISTED ON BLOWER TOP COPY.



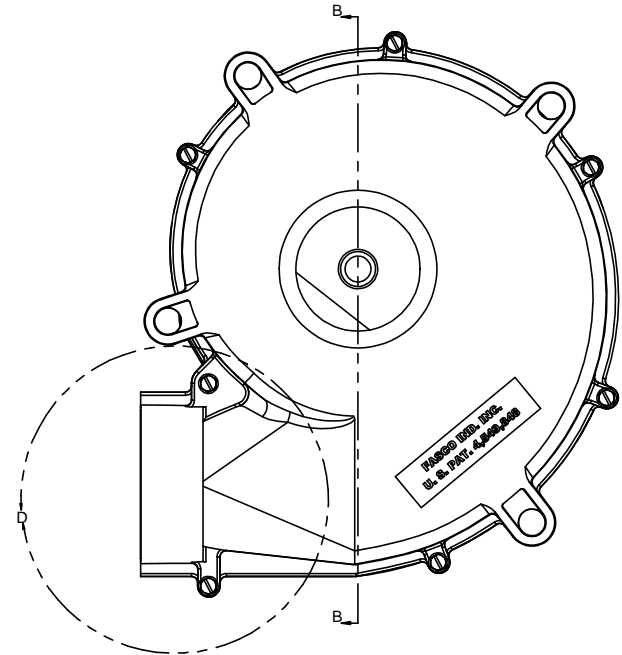
DETAIL D
SCALE 1.5 : 1



SECTION B-B



DETAIL C
SCALE 1.5 : 1



DRAWING REVISION: E	DESIGNED BY: MLS	DATE: 4/28/2015	TOLERANCES UNLESS OTHERWISE SPECIFIED: FRACTIONS: .001, .005, .010, .015, .020, .030, .040, .050, .060, .070, .080, .090, .100, .125, .150, .175, .200, .250, .300, .350, .400, .450, .500, .600, .700, .800, .900, 1.000, 1.250, 1.500, 2.000, 2.500, 3.000, 4.000, 5.000, 6.000, 8.000, 10.000, 12.000, 15.000, 20.000, 25.000, 30.000, 40.000, 50.000, 60.000, 80.000, 100.000 DECIMALS: .001, .005, .010, .015, .020, .030, .040, .050, .060, .070, .080, .090, .100, .125, .150, .175, .200, .250, .300, .350, .400, .450, .500, .600, .700, .800, .900, 1.000, 1.250, 1.500, 2.000, 2.500, 3.000, 4.000, 5.000, 6.000, 8.000, 10.000, 12.000, 15.000, 20.000, 25.000, 30.000, 40.000, 50.000, 60.000, 80.000, 100.000 ANGLES: .125, .250, .375, .500, .625, .750, .875, 1.000, 1.250, 1.500, 1.750, 2.000, 2.250, 2.500, 2.750, 3.000, 3.250, 3.500, 3.750, 4.000, 4.250, 4.500, 4.750, 5.000, 5.250, 5.500, 5.750, 6.000, 6.250, 6.500, 6.750, 7.000, 7.250, 7.500, 7.750, 8.000, 8.250, 8.500, 8.750, 9.000, 9.250, 9.500, 9.750, 10.000 HIDDEN SURFACES: 1/4 MACHINED SURFACES: 1/8 HIDDEN SURFACES: 1/4 MACHINED SURFACES: 1/8	DRAWN BY: MLS	DATE: 4/28/2015	DESCRIPTION: BLOWER ASSY
ECO-0076281	APPROVED BY: SDM	DATE: 4/28/2015	OTHER: X 1/16 (1.5748) 1/8 (3.175) 1/4 (6.35) 3/8 (9.525) 1/2 (12.7) 5/8 (15.875) 3/4 (19.05) 7/8 (22.225) 1 (25.4) 1 1/8 (29.525) 1 1/4 (31.75) 1 3/8 (34.925) 1 1/2 (38.1) 1 5/8 (41.275) 1 3/4 (44.45) 1 7/8 (47.625) 2 (50.8) 2 1/8 (54.975) 2 1/4 (57.15) 2 3/8 (60.325) 2 1/2 (63.5) 2 5/8 (66.675) 2 3/4 (69.85) 2 7/8 (73.025) 3 (76.2) 3 1/8 (79.375) 3 1/4 (81.55) 3 3/8 (84.725) 3 1/2 (87.9) 3 5/8 (91.075) 3 3/4 (94.25) 3 7/8 (97.425) 4 (100.6) 4 1/8 (104.775) 4 1/4 (106.95) 4 3/8 (109.125) 4 1/2 (113.3) 4 5/8 (116.475) 4 3/4 (118.65) 4 7/8 (121.825) 5 (125) 5 1/8 (129.175) 5 1/4 (131.35) 5 3/8 (134.525) 5 1/2 (137.7) 5 5/8 (140.875) 5 3/4 (143.05) 5 7/8 (146.225) 6 (150.6) 6 1/8 (154.775) 6 1/4 (156.95) 6 3/8 (159.125) 6 1/2 (163.3) 6 5/8 (166.475) 6 3/4 (168.65) 6 7/8 (171.825) 7 (176.2) 7 1/8 (180.375) 7 1/4 (182.55) 7 3/8 (184.725) 7 1/2 (187.9) 7 5/8 (191.075) 7 3/4 (193.25) 7 7/8 (196.425) 8 (200.6) 8 1/8 (204.775) 8 1/4 (206.95) 8 3/8 (209.125) 8 1/2 (213.3) 8 5/8 (216.475) 8 3/4 (218.65) 8 7/8 (221.825) 9 (226.2) 9 1/8 (230.375) 9 1/4 (232.55) 9 3/8 (234.725) 9 1/2 (237.9) 9 5/8 (241.075) 9 3/4 (243.25) 9 7/8 (246.425) 10 (250.6) 10 1/8 (254.775) 10 1/4 (256.95) 10 3/8 (259.125) 10 1/2 (263.3) 10 5/8 (266.475) 10 3/4 (268.65) 10 7/8 (271.825) 11 (276.2) 11 1/8 (280.375) 11 1/4 (282.55) 11 3/8 (284.725) 11 1/2 (287.9) 11 5/8 (291.075) 11 3/4 (293.25) 11 7/8 (296.425) 12 (300.6) 12 1/8 (304.775) 12 1/4 (306.95) 12 3/8 (309.125) 12 1/2 (313.3) 12 5/8 (316.475) 12 3/4 (318.65) 12 7/8 (321.825) 13 (326.2) 13 1/8 (330.375) 13 1/4 (332.55) 13 3/8 (334.725) 13 1/2 (337.9) 13 5/8 (341.075) 13 3/4 (343.25) 13 7/8 (346.425) 14 (350.6) 14 1/8 (354.775) 14 1/4 (356.95) 14 3/8 (359.125) 14 1/2 (363.3) 14 5/8 (366.475) 14 3/4 (368.65) 14 7/8 (371.825) 15 (376.2) 15 1/8 (380.375) 15 1/4 (382.55) 15 3/8 (384.725) 15 1/2 (387.9) 15 5/8 (391.075) 15 3/4 (393.25) 15 7/8 (396.425) 16 (400.6) 16 1/8 (404.775) 16 1/4 (406.95) 16 3/8 (409.125) 16 1/2 (413.3) 16 5/8 (416.475) 16 3/4 (418.65) 16 7/8 (421.825) 17 (426.2) 17 1/8 (430.375) 17 1/4 (432.55) 17 3/8 (434.725) 17 1/2 (437.9) 17 5/8 (441.075) 17 3/4 (443.25) 17 7/8 (446.425) 18 (450.6) 18 1/8 (454.775) 18 1/4 (456.95) 18 3/8 (459.125) 18 1/2 (463.3) 18 5/8 (466.475) 18 3/4 (468.65) 18 7/8 (471.825) 19 (476.2) 19 1/8 (480.375) 19 1/4 (482.55) 19 3/8 (484.725) 19 1/2 (487.9) 19 5/8 (491.075) 19 3/4 (493.25) 19 7/8 (496.425) 20 (500.6) 20 1/8 (504.775) 20 1/4 (506.95) 20 3/8 (509.125) 20 1/2 (513.3) 20 5/8 (516.475) 20 3/4 (518.65) 20 7/8 (521.825) 21 (526.2) 21 1/8 (530.375) 21 1/4 (532.55) 21 3/8 (534.725) 21 1/2 (537.9) 21 5/8 (541.075) 21 3/4 (543.25) 21 7/8 (546.425) 22 (550.6) 22 1/8 (554.775) 22 1/4 (556.95) 22 3/8 (559.125) 22 1/2 (563.3) 22 5/8 (566.475) 22 3/4 (568.65) 22 7/8 (571.825) 23 (576.2) 23 1/8 (580.375) 23 1/4 (582.55) 23 3/8 (584.725) 23 1/2 (587.9) 23 5/8 (591.075) 23 3/4 (593.25) 23 7/8 (596.425) 24 (600.6) 24 1/8 (604.775) 24 1/4 (606.95) 24 3/8 (609.125) 24 1/2 (613.3) 24 5/8 (616.475) 24 3/4 (618.65) 24 7/8 (621.825) 25 (626.2) 25 1/8 (630.375) 25 1/4 (632.55) 25 3/8 (634.725) 25 1/2 (637.9) 25 5/8 (641.075) 25 3/4 (643.25) 25 7/8 (646.425) 26 (650.6) 26 1/8 (654.775) 26 1/4 (656.95) 26 3/8 (659.125) 26 1/2 (663.3) 26 5/8 (666.475) 26 3/4 (668.65) 26 7/8 (671.825) 27 (676.2) 27 1/8 (680.375) 27 1/4 (682.55) 27 3/8 (684.725) 27 1/2 (687.9) 27 5/8 (691.075) 27 3/4 (693.25) 27 7/8 (696.425) 28 (700.6) 28 1/8 (704.775) 28 1/4 (706.95) 28 3/8 (709.125) 28 1/2 (713.3) 28 5/8 (716.475) 28 3/4 (718.65) 28 7/8 (721.825) 29 (726.2) 29 1/8 (730.375) 29 1/4 (732.55) 29 3/8 (734.725) 29 1/2 (737.9) 29 5/8 (741.075) 29 3/4 (743.25) 29 7/8 (746.425) 30 (750.6) 30 1/8 (754.775) 30 1/4 (756.95) 30 3/8 (759.125) 30 1/2 (763.3) 30 5/8 (766.475) 30 3/4 (768.65) 30 7/8 (771.825) 31 (776.2) 31 1/8 (780.375) 31 1/4 (782.55) 31 3/8 (784.725) 31 1/2 (787.9) 31 5/8 (791.075) 31 3/4 (793.25) 31 7/8 (796.425) 32 (800.6) 32 1/8 (804.775) 32 1/4 (806.95) 32 3/8 (809.125) 32 1/2 (813.3) 32 5/8 (816.475) 32 3/4 (818.65) 32 7/8 (821.825) 33 (826.2) 33 1/8 (830.375) 33 1/4 (832.55) 33 3/8 (834.725) 33 1/2 (837.9) 33 5/8 (841.075) 33 3/4 (843.25) 33 7/8 (846.425) 34 (850.6) 34 1/8 (854.775) 34 1/4 (856.95) 34 3/8 (859.125) 34 1/2 (863.3) 34 5/8 (866.475) 34 3/4 (868.65) 34 7/8 (871.825) 35 (876.2) 35 1/8 (880.375) 35 1/4 (882.55) 35 3/8 (884.725) 35 1/2 (887.9) 35 5/8 (891.075) 35 3/4 (893.25) 35 7/8 (896.425) 36 (900.6) 36 1/8 (904.775) 36 1/4 (906.95) 36 3/8 (909.125) 36 1/2 (913.3) 36 5/8 (916.475) 36 3/4 (918.65) 36 7/8 (921.825) 37 (926.2) 37 1/8 (930.375) 37 1/4 (932.55) 37 3/8 (934.725) 37 1/2 (937.9) 37 5/8 (941.075) 37 3/4 (943.25) 37 7/8 (946.425) 38 (950.6) 38 1/8 (954.775) 38 1/4 (956.95) 38 3/8 (959.125) 38 1/2 (963.3) 38 5/8 (966.475) 38 3/4 (968.65) 38 7/8 (971.825) 39 (976.2) 39 1/8 (980.375) 39 1/4 (982.55) 39 3/8 (984.725) 39 1/2 (987.9) 39 5/8 (991.075) 39 3/4 (993.25) 39 7/8 (996.425) 40 (1000.6) 40 1/8 (1004.775) 40 1/4 (1006.95) 40 3/8 (1009.125) 40 1/2 (1013.3) 40 5/8 (1016.475) 40 3/4 (1018.65) 40 7/8 (1021.825) 41 (1026.2) 41 1/8 (1030.375) 41 1/4 (1032.55) 41 3/8 (1034.725) 41 1/2 (1037.9) 41 5/8 (1041.075) 41 3/4 (1043.25) 41 7/8 (1046.425) 42 (1050.6) 42 1/8 (1054.775) 42 1/4 (1056.95) 42 3/8 (1059.125) 42 1/2 (1063.3) 42 5/8 (1066.475) 42 3/4 (1068.65) 42 7/8 (1071.825) 43 (1076.2) 43 1/8 (1080.375) 43 1/4 (1082.55) 43 3/8 (1084.725) 43 1/2 (1087.9) 43 5/8 (1091.075) 43 3/4 (1093.25) 43 7/8 (1096.425) 44 (1100.6) 44 1/8 (1104.775) 44 1/4 (1106.95) 44 3/8 (1109.125) 44 1/2 (1113.3) 44 5/8 (1116.475) 44 3/4 (1118.65) 44 7/8 (1121.825) 45 (1126.2) 45 1/8 (1130.375) 45 1/4 (1132.55) 45 3/8 (1134.725) 45 1/2 (1137.9) 45 5/8 (1141.075) 45 3/4 (1143.25) 45 7/8 (1146.425) 46 (1150.6) 46 1/8 (1154.775) 46 1/4 (1156.95) 46 3/8 (1159.125) 46 1/2 (1163.3) 46 5/8 (1166.475) 46 3/4 (1168.65) 46 7/8 (1171.825) 47 (1176.2) 47 1/8 (1180.375) 47 1/4 (1182.55) 47 3/8 (1184.725) 47 1/2 (1187.9) 47 5/8 (1191.075) 47 3/4 (1193.25) 47 7/8 (1196.425) 48 (1200.6) 48 1/8 (1204.775) 48 1/4 (1206.95) 48 3/8 (1209.125) 48 1/2 (1213.3) 48 5/8 (1216.475) 48 3/4 (1218.65) 48 7/8 (1221.825) 49 (1226.2) 49 1/8 (1230.375) 49 1/4 (1232.55) 49 3/8 (1234.725) 49 1/2 (1237.9) 49 5/8 (1241.075) 49 3/4 (1243.25) 49 7/8 (1246.425) 50 (1250.6) 50 1/8 (1254.775) 50 1/4 (1256.95) 50 3/8 (1259.125) 50 1/2 (1263.3) 50 5/8 (1266.475) 50 3/4 (1268.65) 50 7/8 (1271.825) 51 (1276.2) 51 1/8 (1280.375) 51 1/4 (1282.55) 51 3/8 (1284.725) 51 1/2 (1287.9) 51 5/8 (1291.075) 51 3/4 (1293.25) 51 7/8 (1296.425) 52 (1300.6) 52 1/8 (1304.775) 52 1/4 (1306.95) 52 3/8 (1309.125) 52 1/2 (1313.3) 52 5/8 (1316.475) 52 3/4 (1318.65) 52 7/8 (1321.825) 53 (1326.2) 53 1/8 (1330.375) 53 1/4 (1332.55) 53 3/8 (1334.725) 53 1/2 (1337.9) 53 5/8 (1341.075) 53 3/4 (1343.25) 53 7/8 (1346.425) 54 (1350.6) 54 1/8 (1354.775) 54 1/4 (1356.95) 54 3/8 (1359.125) 54 1/2 (1363.3) 54 5/8 (1366.475) 54 3/4 (1368.65) 54 7/8 (1371.825) 55 (1376.2) 55 1/8 (1380.375) 55 1/4 (1382.55) 55 3/8 (1384.725) 55 1/2 (1387.9) 55 5/8 (1391.075) 55 3/4 (1393.25) 55 7/8 (1396.425) 56 (1400.6) 56 1/8 (1404.775) 56 1/4 (1406.95) 56 3/8 (1409.125) 56 1/2 (1413.3) 56 5/8 (1416.475) 56 3/4 (1418.65) 56 7/8 (1421.825) 57 (1426.2) 57 1/8 (1430.375) 57 1/4 (1432.55) 57 3/8 (1434.725) 57 1/2 (1437.9) 57 5/8 (1441.075) 57 3/4 (1443.25) 57 7/8 (1446.425) 58 (1450.6) 58 1/8 (1454.775) 58 1/4 (1456.95) 58 3/8 (1459.125) 58 1/2 (1463.3) 58 5/8 (1466.475) 58 3/4 (1468.65) 58 7/8 (1471.825) 59 (1476.2) 59 1/8 (1480.375) 59 1/4 (1482.55) 59 3/8 (1484.725) 59 1/2 (1487.9) 59 5/8 (1491.075) 59 3/4 (1493.25) 59 7/8 (1496.425) 60 (1500.6) 60 1/8 (1504.775) 60 1/4 (1506.95) 60 3/8 (1509.125) 60 1/2 (1513.3) 60 5/8 (1516.475) 60 3/4 (1518.65) 60 7/8 (1521.825) 61 (1526.2) 61 1/8 (1530.375) 61 1/4 (1532.55) 61 3/8 (1534.725) 61 1/2 (1537.9) 61 5/8 (1541.075) 61 3/4 (1543.25) 61 7/8 (1546.425) 62 (1550.6) 62 1/8 (1554.775) 62 1/4 (1556.95) 62 3/8 (1559.125) 62 1/2 (1563.3) 62 5/8 (1566.475) 62 3/4 (1568.65) 62 7/8 (1571.825) 63 (1576.2) 63 1/8 (1580.375) 63 1/4 (1582.55) 63 3/8 (1584.725) 63 1/2 (1587.9) 63 5/8 (1591.075) 63 3/4 (1593.25) 63 7/8 (1596.425) 64 (1600.6) 64 1/8 (1604.775) 64 1/4 (1606.95) 64 3/8 (1609.125) 64 1/2 (1613.3) 64 5/8 (1616.475) 64 3/4 (1618.65) 64 7/8 (1621.825) 65 (1626.2) 65 1/8 (1630.375) 65 1/4 (1632.55) 65 3/8 (1634.725) 65 1/2 (1637.9) 65 5/8 (1641.075) 65 3/4 (1643.25) 65 7/8 (1646.425) 66 (1650.6) 66 1/8 (1654.775) 66 1/4 (1656.95) 66 3/8 (1659.125) 66 1/2 (1663.3) 66 5/8 (1666.475) 66 3/4 (1668.65) 66 7/8 (1671.825) 67 (1676.2) 67 1/8 (1680.375) 67 1/4 (1682.55) 67 3/8 (1684.725) 67 1/2 (1687.9) 67 5/8 (1691.075) 67 3/4 (1693.25) 67 7/8 (1696.425) 68 (1700.6) 68 1/8 (1704.775) 68 1/4 (1706.95) 68 3/8 (1709.125) 68 1/2 (1713.3) 68 5/8 (1716.475) 68 3/4 (1718.65) 68 7/8 (1721.825) 69 (1726.2) 69 1/8 (1730.375) 69 1/4 (1732.55) 69 3/8 (1734.725) 69 1/2 (1737.9) 69 5/8 (1741.075) 69 3/4 (1743.25) 69 7/8 (1746.425) 70 (1750.6) 70 1/8 (1754.775) 70 1/4 (1756.95) 70 3/8 (1759.125) 70 1/2 (1763.3) 70 5/8 (1766.475) 70 3/4 (1768.65) 70 7/8 (1771.825) 71 (1776.2) 71 1/8 (1780.375) 71 1/4 (1782.55) 71 3/8 (1784.725) 71 1/2 (1787.9) 71 5/8 (1791.075) 71 3/4 (1793.25) 71 7/8 (1796.425) 72 (1800.6) 72 1/8 (1804.775) 72 1/4 (1806.95) 72 3/8 (1809.125) 72 1/2 (1813.3) 72 5/8 (1816.475) 72 3/4 (1818.65) 72 7/8 (1821.825) 73 (1826.2) 73 1/8 (1830.375) 73 1/4 (1832.55) 73 3/8 (1834.725) 73 1/2 (1837.9) 73 5/8 (1841.075) 73 3/4 (1843.25) 73 7/8 (1846.425) 74 (1850.6) 74 1/8 (1854.775) 74 1/4 (1856.95) 74 3/8 (1859.125) 74 1/2 (1863.3) 74 5/8 (1866.475) 74 3/4 (1868.65) 74 7/8 (1871.825) 75 (1876.2) 75 1/8 (1880.375) 75 1/4 (1882.55) 75 3/8 (1884.725) 75 1/2 (1887.9) 75 5/8 (1891.075) 75 3/4 (1893.25) 75 7/8 (1896.425) 76 (1900.6) 76 1/8 (1904.775) 76 1/4 (1906.95) 76 3/8 (1909.125) 76 1/2 (1913.3) 76 5/8 (1916.475) 76 3/4 (1918.65) 76 7/8 (1921.825) 77 (1926.2) 77 1/8 (1930.375) 77 1/4 (1932.55) 77 3/8 (1934.725) 77 1/2 (1937.9) 77 5/8 (1941.075) 77 3/4 (1943.25) 77 7/8 (1946.425) 78 (1950.6) 78 1/8 (1954.775) 78 1/4 (1956.95) 78 3/8 (1959.125) 78 1/2 (1963.3) 78 5/8 (1966.475) 78 3/4 (1968.65) 78 7/8 (1971.825) 79 (1976.2) 79 1/8 (1980.375) 79 1/4 (1982.55) 79 3/8 (1984.725) 79 1/2 (1987.9) 79 5/8 (1991.075) 79 3/4 (1993.25) 79 7/8 (1996.425) 80 (2000.6) 80 1/8 (2004.775) 80 1/4 (2006.95) 80 3/8 (2009.125) 80 1/2 (2013.3) 80 5/8 (2016.475) 80 3/4 (2018.65) 80 7/8 (2021.825) 81 (2026.2) 81 1/8 (2030.375) 81 1/4 (2032.55) 81 3/8 (2034.725) 81 1/2 (2037.9) 81 5/8 (2041.075) 81 3/4 (2043.25) 81 7/8 (2046.425) 82 (2050.6) 82 1/8 (2054.775) 82 1/4 (2056.95) 82 3/8 (2059.125) 82 1/2 (2063.3) 82 5/8 (2066.475) 82 3/4 (2068.65) 82 7/8 (2071.825) 83 (2076.2) 83 1/8 (2080.375) 83 1/4 (2082.55) 83 3			