

- NOTES:
1. SWITCH MUST MAKE CONTACT BETWEEN 1800-2500 RPM AS SPEED INCREASES AND BREAK 50-500 RPM BELOW ACTUAL MAKE.
 2. SWITCH MECHANISM TO GIVE QUIET OPERATION ABOVE 2500 RPM.
 3. IMPELLER IS TO BE INSTALLED WITH BACKPLATE TOWARD MOTOR MOUNTING SHELL. IMPELLER IS OPPOSITE ROTATION. INSPECTION TEST FIXTURING IS REQUIRED.
 4. PACK 1 PER CONTAINER, 27 MAX. PER PALLET, PACKING ASSY. 87854925, 9 CONTAINERS PER LAYER, 3 LAYERS PER PALLET. PER 88834200 AND 88834408.
 5. CARTON LABELS MUST ALL FACE ONE DIRECTION TOWARD THE OPEN END OF THE PALLET. SEE 88834408.
 7. NO PACKAGING TAPE OVER CARTON LABEL.

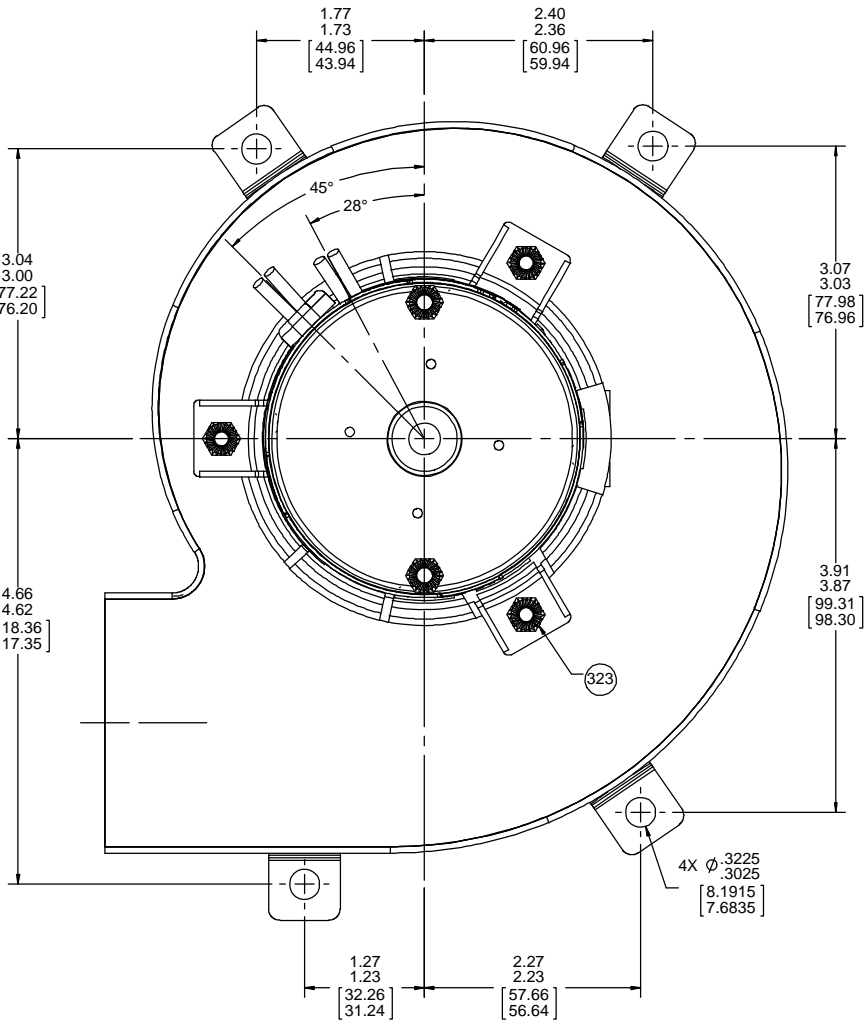
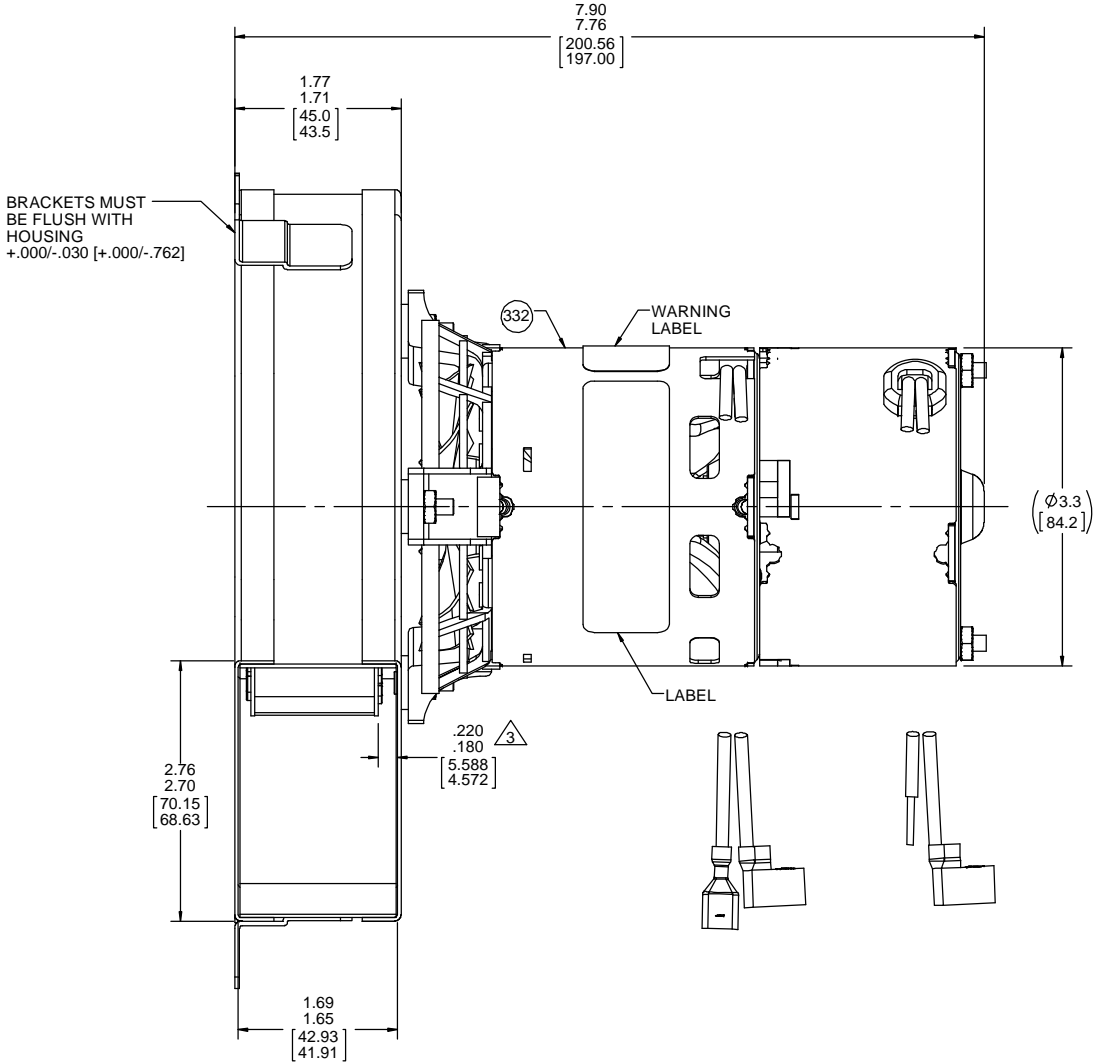
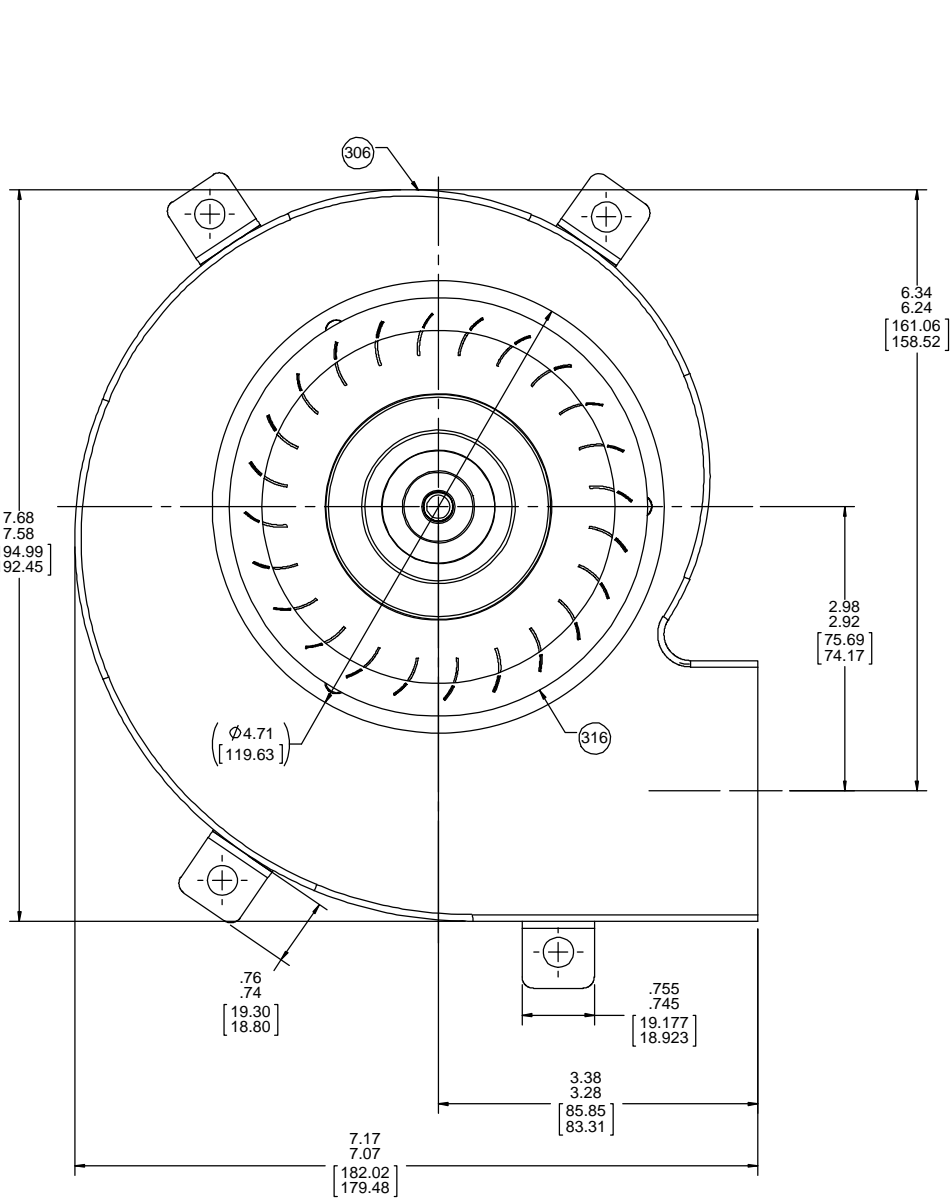
Connection Diagram
Blk ——— Line
Blk ——— Line
Orn ———
Orn ———

THERMALLY PROTECTED
CLASS "B" INSULATION
416 SS SHAFT

APPLICATION:	DISTRIBUTION	B	LA	FR	A	S	C	E	B	A
CUSTOMER:	FDC	12	21	49	V	02	ER	5	3	0
CUSTOMER PN:	A221									

LEAD MATERIAL
18 GA. 125°C 4/64 INUSL.
EPDM
BLACK
36.00/34.00 [914.40/863.60]
(1) FSPADE TERM.
AMP 2-520263-2
(1) FFLAG TERM.
AMP 2-520128-2

SWITCH LEAD MATERIAL
18 GA. 105°C 4/64 INSUL.
THERMOPLASTIC
ORANGE
(1) 41.00/39.00 [1041.40/990.60]
.56/.44 [14.22/11.18] STRIP, TINNED
(1) 57.00/55.00 [1447.80/1397.00]
W/FLAG TERM.
AMP 2-520128-2



TYPICAL PERFORMANCE TEST DATA WITH EXHAUST 1/2 BLOCKED			
AT 230 VOLTS 60 Hz			
	RPM	WATTS	AMPS
	3434	52	.39
BLOWER WEIGHT 4 3/4 LBS.			ENDPLAY .025/.008 [.635/.203]

DRAWING REVISION AA		REVISION BY MLS	DATE 2/1/2018	TOLERANCES UNLESS OTHERWISE SPECIFIED: DEC. INCH mm .XX ±0.1 [2.5] .XX ±0.01 [0.25] .XXX ±0.005 [0.127] XXXX ±0.0005 [0.0127] REMOVE BURRS & BREAK SHARP EDGES: .003/.015 [0.076/.381] X 45° CORNER FILLETS: R.02 [.51] MACHINED SURFACES: 125/ INCH/ MIN/		ANGLE 21°	DRAWN BY MLS	DATE 2/1/2018	DESCRIPTION		PROCESS/FINISH FLAT BLACK		SHEET 1 OF 1
ECO-0138863 ECO DESCRIPTION REDRAWN TO SOLIDWORKS PROPRIETARY AND CONFIDENTIAL INFORMATION: THIS DOCUMENT IS THE PROPERTY OF REGAL BELLOIT AMERICA, INC. CONCEPTS AND CONTENTS ARE OWNERS PROPRIETARY INFORMATION. ANY PERSON, CORPORATION OR OTHER FIRM RECEIVING IT IS DEEMED, BY RECEIVING IT, TO AGREE THAT IT, AND/OR ANY PART OF IT, SHALL NOT BE DISCLOSED TO ANY PERSON, CORPORATION OR OTHER ENTITY, DUPLICATED, AND/OR USED, EXCEPT AS EXPRESSLY APPROVED IN WRITING IN ADVANCE BY OWNER. THIS DOCUMENT SHALL BE RETURNED TO OWNER UPON REQUEST. IT MAY BE SUBJECT TO CERTAIN RESTRICTIONS UNDER APPLICABLE EXPORT CONTROL LAWS AND REGULATIONS.				JMG 2/1/2018			APPROVED BY JMG	DATE 2/1/2018	MATERIAL	DRAWING NUMBER 702111699			
3				2		1							