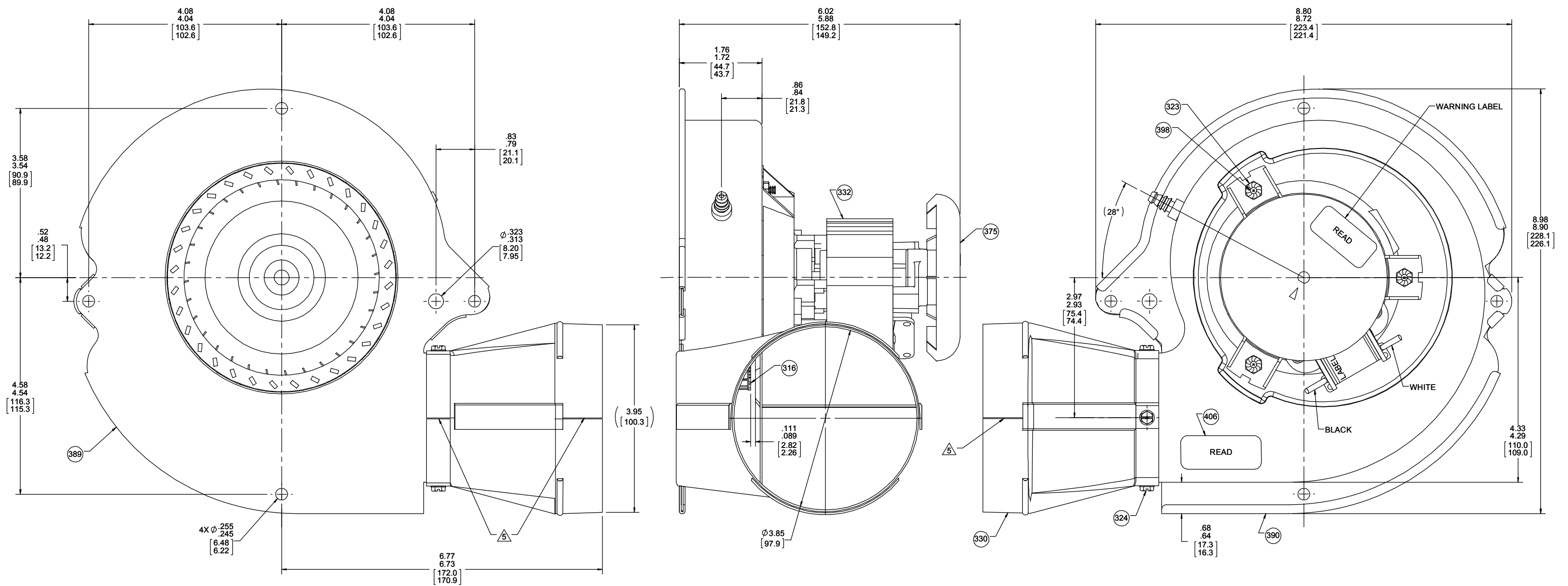
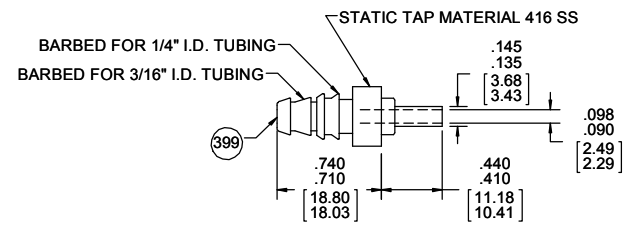


- NOTES:
- INSPECTION TEST FIXTURING IS REQUIRED.
 - STATIC TAP READING IS TO BE -1.43 MIN. CORRECTED TO STANDARD AIR (0.075 LB/FT³) WITH A 1 5/16" INLET RESTRICTOR.
 - IMPELLER LOCATION MEASURED FROM THE INSIDE OF MOTOR SHELL ON THE DISHED AREA TO THE BACK PLATE OF IMPELLER.
 - PACK 1 PER CONTAINER, 9 CONTAINERS PER LAYER, 4 LAYERS PER PALLET, 36 MAX. AMOUNT PER PALLET. PACKING ASSEMBLY 87855195, PER 88834200 AND 88834408.
 - .030 [.76] GAP ALLOWED.
 - IMPELLER MUST BE ALUMINIZED STEEL: BECKETT AIR F115-34S.
 - CARTON LABELS MUST ALL FACE ONE DIRECTION TOWARD THE OPEN END OF THE PALLET. SEE 88834408.
 - NO PACKAGING TAPE OVER CARTON LABEL.

THERMALLY PROTECTED
CLASS "B" INSULATION
SEALED BALL BEARING
416 SS SHAFT

APPLICATION:	DISTRIBUTION	B	LA	FR	A	S	C	E	B	A
CUSTOMER:	FASCO DIST.	GS	58	48	X	18	OD	5	0	0
CUSTOMER PN:	A207									

LEAD MATERIAL
18 GA. 125°C 2/64 INSUL.
X-LINKED POLY.
BLACK AND WHITE
8.00/6.00 [203.2/152.4]
SOCKET TERMINALS
AMP 350536-1



61305568

SAFETY WARNING
This motor must be grounded in accordance with local or national electrical codes to prevent possible injury due to electrical shock

AVERTISSEMENT DE SÉCURITÉ
Ce moteur doit être fondé sur conformément à la réglementation locale ou national électrique codes pour prévenir d'éventuelles blessures en raison de choc électrique

61304322

US PATENT:
6314894, 6318358, 6468034
6494152, 6595146, 6895874
6902373, 6908281, 6929448

TYPICAL PERFORMANCE TEST DATA
WITH A 1 5/16" INLET RESTRICTOR

AT 115 VOLTS 60 Hz

RPM	WATTS	AMPS
3308	78	1.34

BLOWER WEIGHT
5 1/4 LBS.

ENDPLAY
.XX.XX

DRAWING REVISION EB	REVISION BY PLA	REV DATE/DATE 7/16/2019	TOLERANCES (EXCEPT AS NOTED): DEC. INCH. mm ANGLE X ±0.1 [±3] 1° XX ±0.01 [±0.3] XXX ±0.005 [±0.13] XXXX ±0.0005 [±0.013]	DRAWN BY RPT	DATE 05/11/2016	
ECO-0169474	APPROVED BY MLS	DATE 7/16/2019	REMOVE BURRS & BREAK SHARP EDGES: .003/.015 [08/38] X 45° CORNER FILLETS: R.02 [5] MACHINED SURFACES: 125/5 INCR/ m/v mm DIMENSIONS IN [BRACKETS] ARE FOR REFERENCE ONLY	APPROVED BY JMG	DATE 05/11/2016	
<p>REMOVED NOTE TO ADD TAPE TO BOBBIN</p> <p><small>COPYRIGHT © 2016 REGAL BELLOIT AMERICA, INC. ALL RIGHTS RESERVED. PROPRIETARY AND CONFIDENTIAL INFORMATION. THIS DOCUMENT IS THE PROPERTY OF REGAL BELLOIT AMERICA, INC. CONCEPT AND CONTENT OWNERS PROPRIETARY INFORMATION. ANY PERSON, CORPORATION OR OTHER FIRM RECEIVING IT IS DEEMED, BY RECEIVING IT, TO AGREE THAT IT, AND/OR ANY PART OF IT, SHALL NOT BE DISCLOSED TO ANY PERSON, CORPORATION OR OTHER ENTITY, DUPLICATED, AND/OR USED, EXCEPT AS EXPRESSLY APPROVED IN WRITING IN ADVANCE BY OWNER. THIS DOCUMENT SHALL BE RETURNED TO OWNER UPON REQUEST. IT MAY BE SUBJECT TO CERTAIN RESTRICTIONS UNDER APPLICABLE EXPORT CONTROL LAWS AND REGULATIONS.</small></p>			THIRD ANGLE PROJECTION	SIZE D	DRAWING NUMBER 70581525	SHEET 1 OF 1