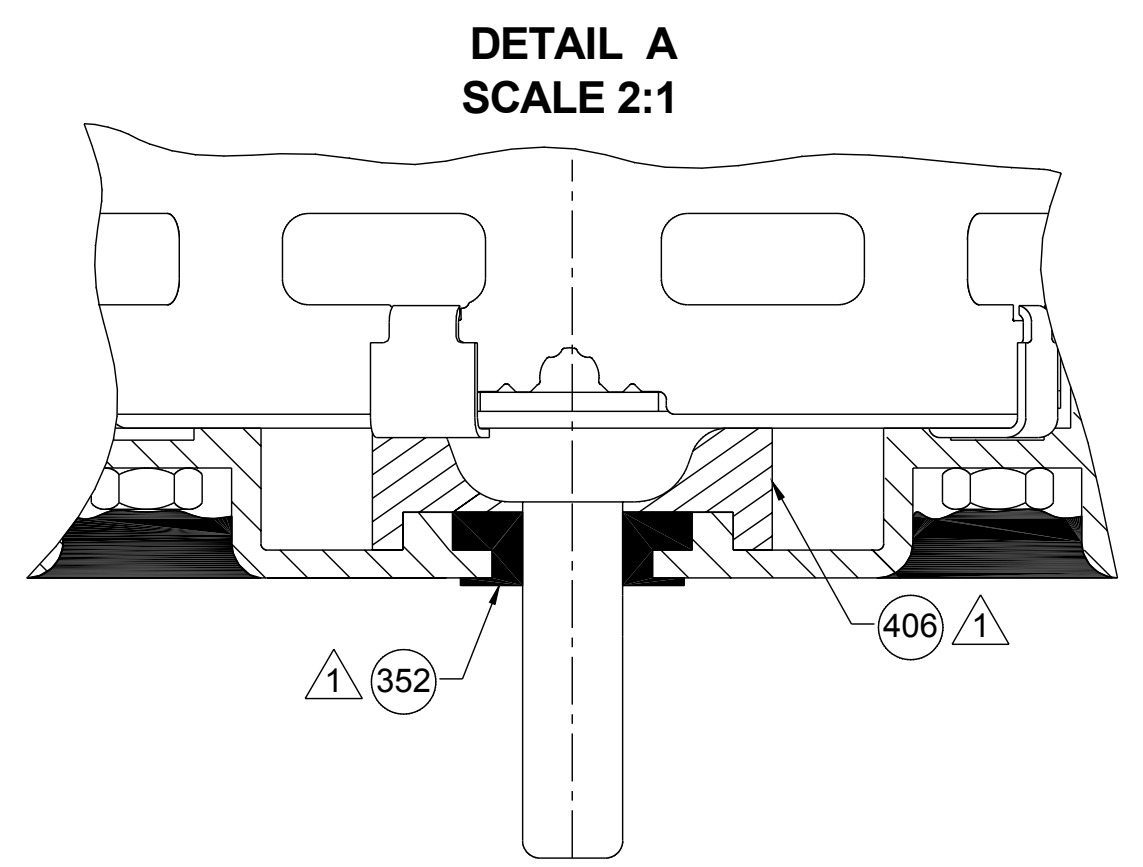


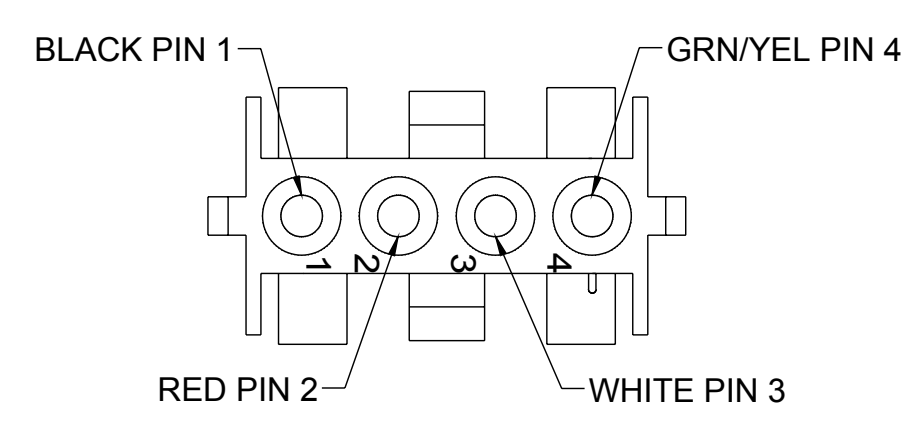
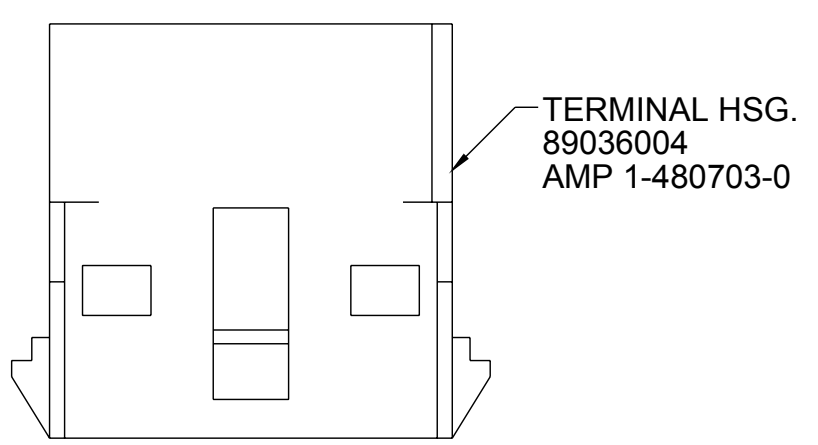
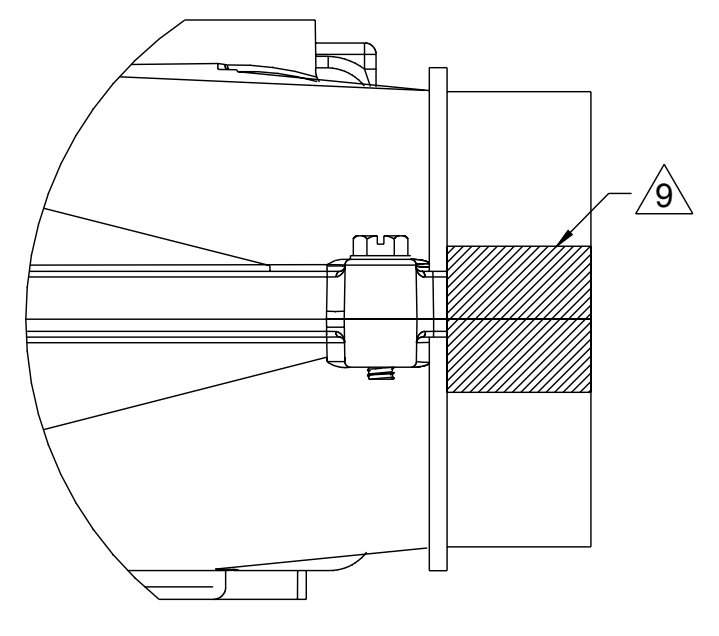
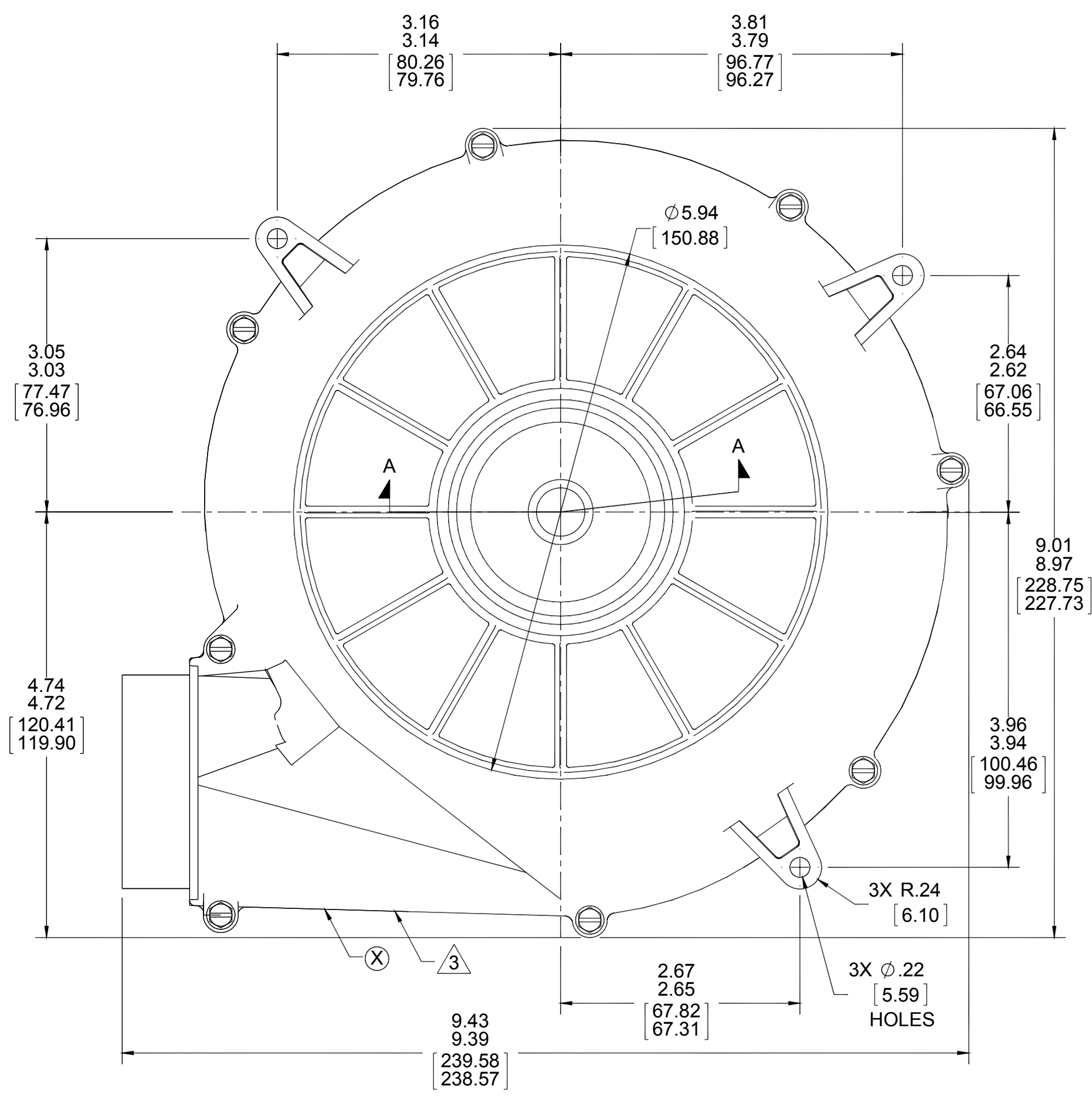
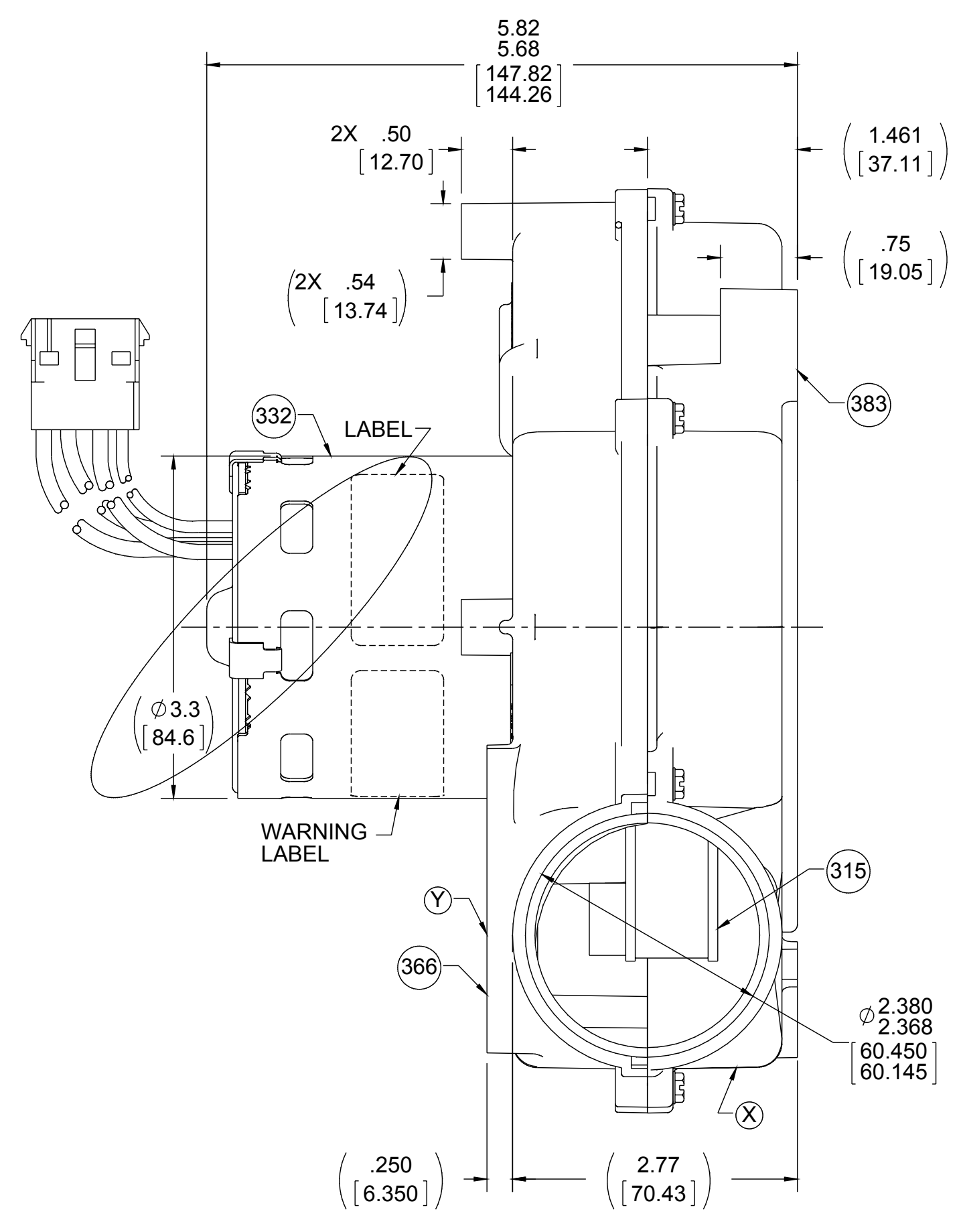
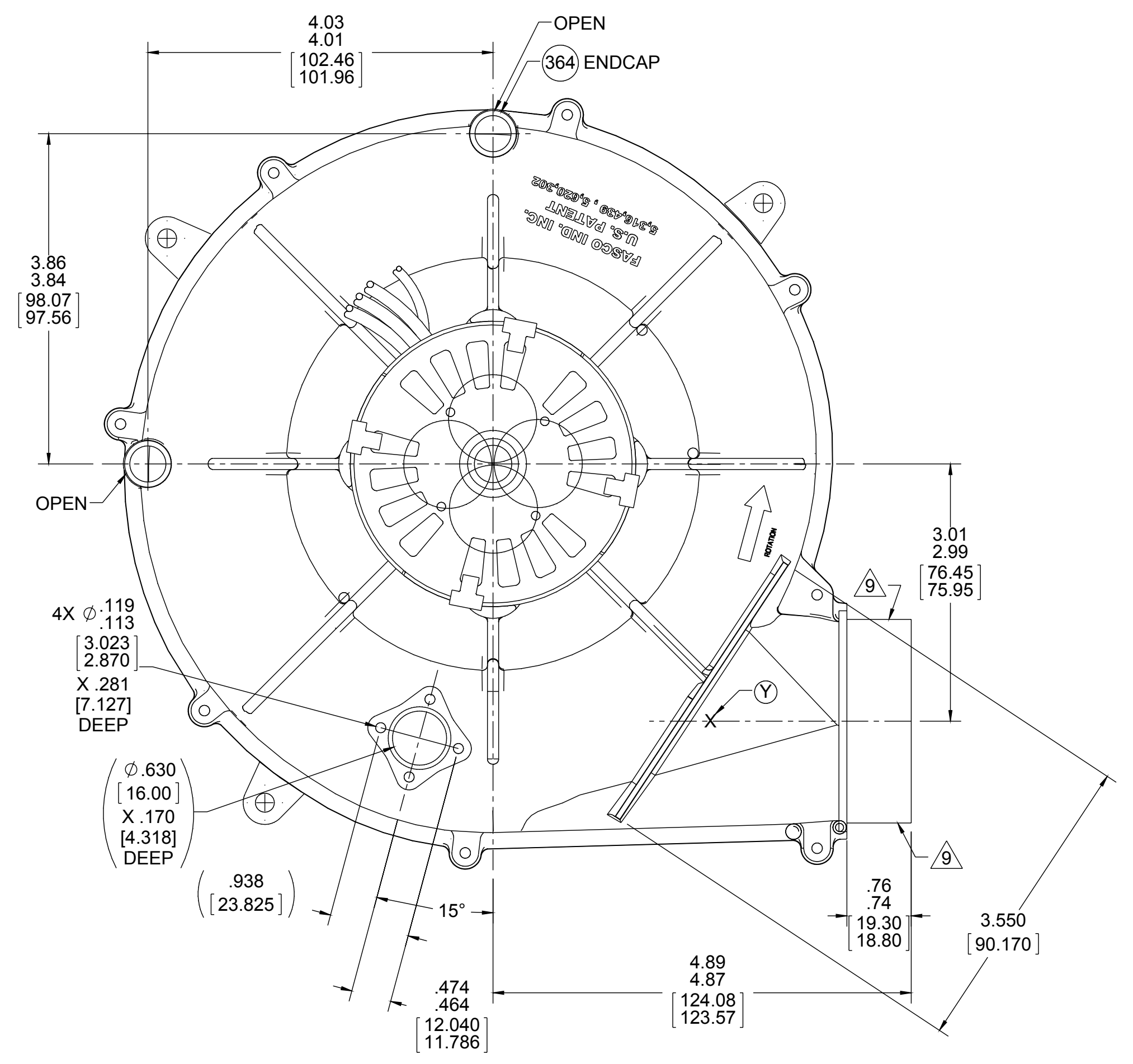
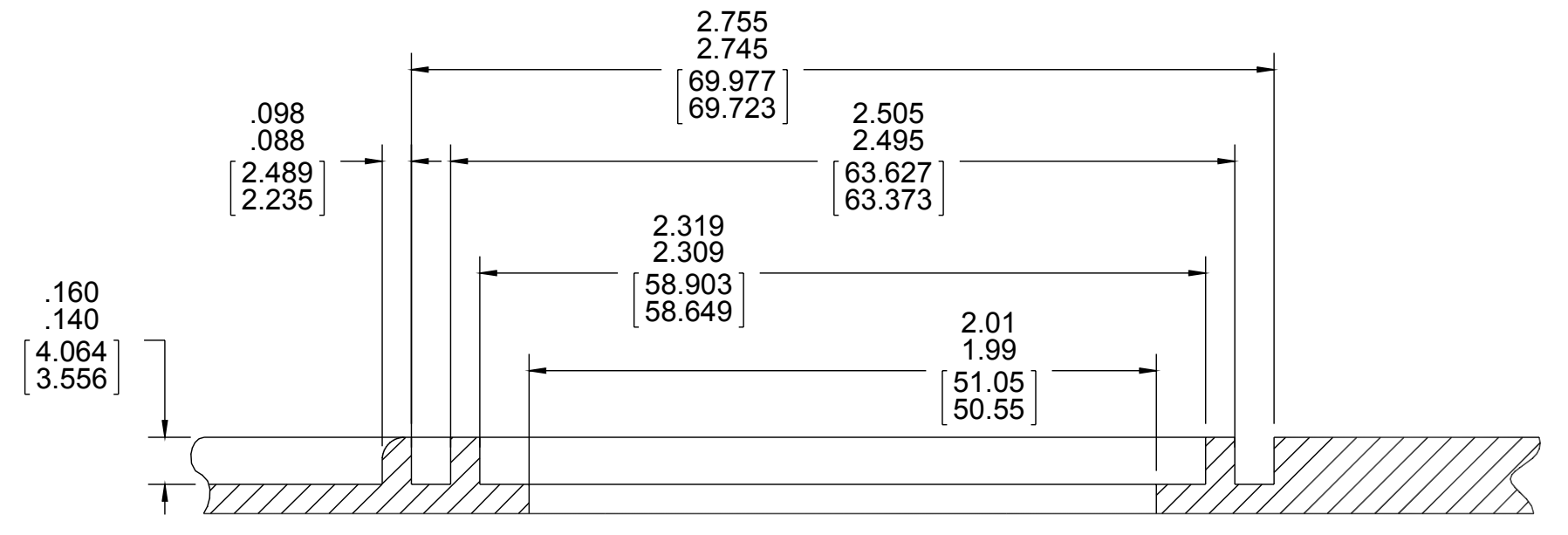
- NOTES:
- ASSEMBLE PC 352 AND PC 406 SEAL BEFORE MOTOR HAS BEEN ASSEMBLED TO BLOWER.
 - ALL UNITS TO BE CHECKED 100% FOR VIBRATION.
 - DESIGNATES LOCATION BACK FROM EXHAUST TO CHECK "X" AND "Y".
 - MAX. DISPLACEMENT OF 1.3 MIL IN THE "X" AND 1.3 MIL IN THE "Y" DIRECTIONS AS SHOWN. AT APPROXIMATELY 4200 R.P.M., 80% SETTING. TEST WITH A 1 1/4 IN. INLET RESTRICTOR.
 - PACK 1 PER CONTAINER, 12 CONTAINERS PER LAYER, 3 LAYERS PER PALLET, 36 MAX. PER PALLET, PACKING ASSY. 87854916, PER 88834200 AND 88834408.
 - EACH ASSEMBLY TO BE UNIT BALANCED.
 - CARTON LABELS MUST ALL FACE ONE DIRECTION TOWARDS THE OPEN END OF THE PALLET. SEE PER 88834408.
 - NO PACKAGING TAPE OVER CARTON LABEL.
 - APPLY AND SPREAD THIN LAYER (APPROX .025 [.635] THICK X .38 [9.65] WIDE) WITH PC 391 SEALANT TO TOP AND BOTTOM OF EXHAUST WHERE THEY BUTT AGAINST EACH OTHER.



THERMALLY PROTECTED
CLASS "B" INSULATION
416 SS SHAFT
SEALED BALL BEARING

APPLICATION:	GAS FURNACE	B	LA	FR	A	S	C	E	B	A
CUSTOMER:	FASCO DIST.	PF	92	30	V	01	AA	5	0	0
CUSTOMER PN:	A197									

LEAD MATERIAL
18 GA. 125°C 2/64 INSUL.
X-LINKED POLY. BLACK,
WHITE, AND RED
6.00/4.00 [152.40/101.60]
W/ PIN TERM. 89039085
AMP 350218-1
GRN/YEL GROUND LEAD
6.00/4.00 [152.40/101.60]
W/ PIN TERM. 89039085
AMP 350218-1



**AVERAGE PERFORMANCE TEST DATA IN FREE AIR
3 PHASE MOTOR
AT VOLTS Hz**

	RPM	WATTS	AMPS
87 / 158	4200	52.1	.81

BLOWER WEIGHT
3.75 LBS.

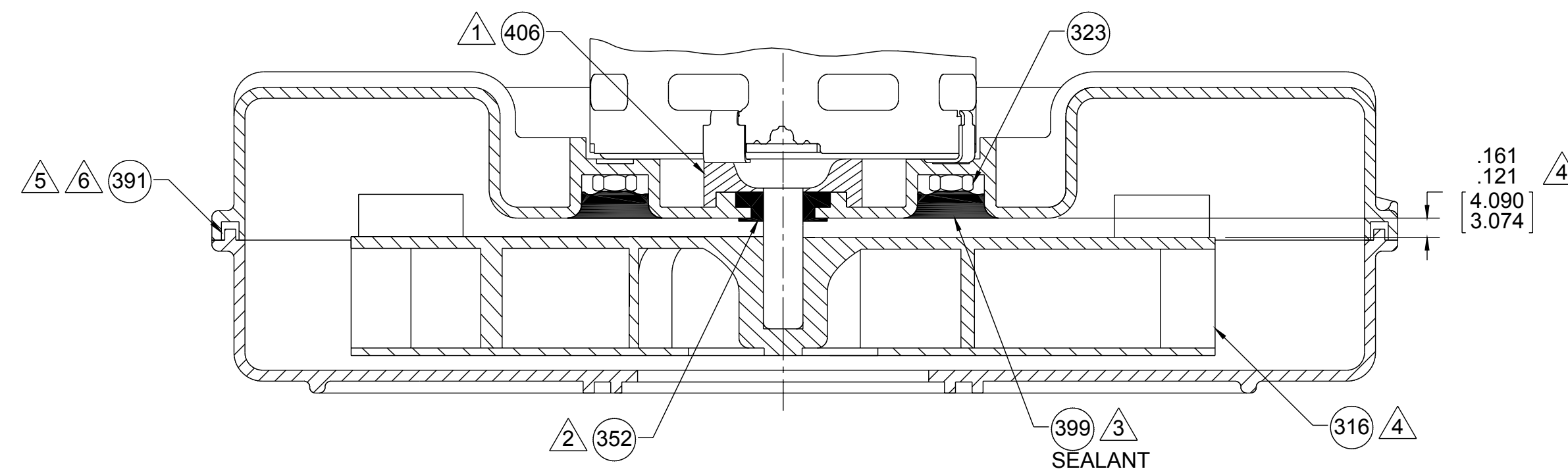
ENDPLAY
.XX/.XX

CONNECTION DIAGRAM
BLACK — PHASE 1
RED — PHASE 2
WHITE — PHASE 3
GRN/YEL — GROUND

DRAWING REVISION J	REVISION BY SDM	DATE 6/23/2015	TOLERANCES UNLESS OTHERWISE SPECIFIED: DEC. INCH .01 .XX +0.01 [-0.25] XXX +0.005 [-0.127] XXXX +0.0005 [-0.0127]	DRAWN BY SDM	REGAL™ Regal Beloit America, Inc.
ECO ECO-0079023	APPROVED BY KSA	DATE 6/23/2015	ANGLE 1°	DATE 6/23/2015	
ADD SEALING DETAIL AND NOTE			APPROVED BY KSA	DATE 6/23/2015	DESCRIPTION BLOWER ASSY
BLOWER WEIGHT 3.75 LBS.			ENDPLAY .XX/.XX	THIRD ANGLE PROJECTION	MATERIAL PROCESS/FINISH BLACK
DRAWING NUMBER 70920274			SHEET 1 OF 2		

NOTES:

1. ASSEMBLE PC 406 SEAL TO MOTOR CENTERED OVER SHAFT WITH ADHESIVE SIDE ON MOTOR.
2. SHAFT SEAL PC 352 MUST BE LOCATED ON SHAFT AS SHOWN BELOW.
3. BEFORE ASSEMBLING IMPELLER TO SHAFT, PRESS PC 399 ROPE SEALANT AGAINST EXPOSED FACE OF NUTS TO PROTECT FROM CORROSIVES.
4. PRESS IMPELLER ASSEMBLY ONTO SHAFT AND LOCATE AS SHOWN ON DRAWING.
5. LINE UP HOUSING HALVES WITH THREE PILOTS. SECURE WITH EIGHT SCREWS. TORQUE SCREWS TO 7 IN.LBS. MAX. NO AIR GAPS ALLOW BETWEEN HOUSING HALVES.
NOTE: PLASTIC STRIPS AT TORQUE SETTINGS ABOVE 7 IN.LBS.
6. WHEN EQUIPPED WITH A WATER SEAL, EVERY 20TH BLOWER IS TO BE CHECKED FOR WATER LEAKAGE. IF LEAKERS ARE DISCOVERED, CONTACT ENGINEERING. USE 1/3 PARTS MR. BUBBLE TO 2/3 PARTS WATER.



DRAWING REVISION J		REVISION BY SDM	DATE 6/23/2015	TOLERANCES UNLESS OTHERWISE SPECIFIED:		DRAWN BY SDM		REGAL™ Regal Beloit America, Inc.		
ECO-0079023		APPROVED BY KSA	DATE 6/23/2015	DEC.	INCH	mm	ANGLE	DATE 6/23/2015	DESCRIPTION BLOWER ASSY	
ECO DESCRIPTION ADD SEALING DETAIL AND NOTE				.XX	+0.01	[+0.25]	°	APPROVED BY KSA		
<small> COPYRIGHT REGAL BELOIT AMERICA, INC. ALL RIGHTS RESERVED. PROPRIETARY AND CONFIDENTIAL INFORMATION - THIS DOCUMENT IS THE PROPERTY OF REGAL BELOIT AMERICA, INC. OWNERSHIP AND CONFIDENTIALITY OF THIS DOCUMENT IS NOT TO BE DISCLOSED TO ANY PERSON, CORPORATION OR OTHER ENTITY, DUPLICATED, AND/OR USED, EXCEPT AS EXPRESSLY APPROVED IN WRITING IN ADVANCE BY OWNER. THIS DOCUMENT SHALL BE RETURNED TO OWNER UPON REQUEST. IT MAY BE SUBJECT TO CERTAIN RESTRICTIONS UNDER APPLICABLE EXPORT CONTROL LAWS AND REGULATIONS. </small>				.XXX	+0.005	[+0.127]		DATE 6/23/2015	MATERIAL PROCESS/FINISH BLACK	
				XXXX	+0.0005	[+0.0127]		REFERENCE		
				REMOVE BURRS & BREAK SHARP EDGES: 0.03/015 [0.76/381] X 45°		MACHINED SURFACES: 125/32		THIRD ANGLE PROJECTION	SIZE D	DRAWING NUMBER 70920274
				mm SHOWN IN [BRACKETS]				SHEET 2 OF 2		