

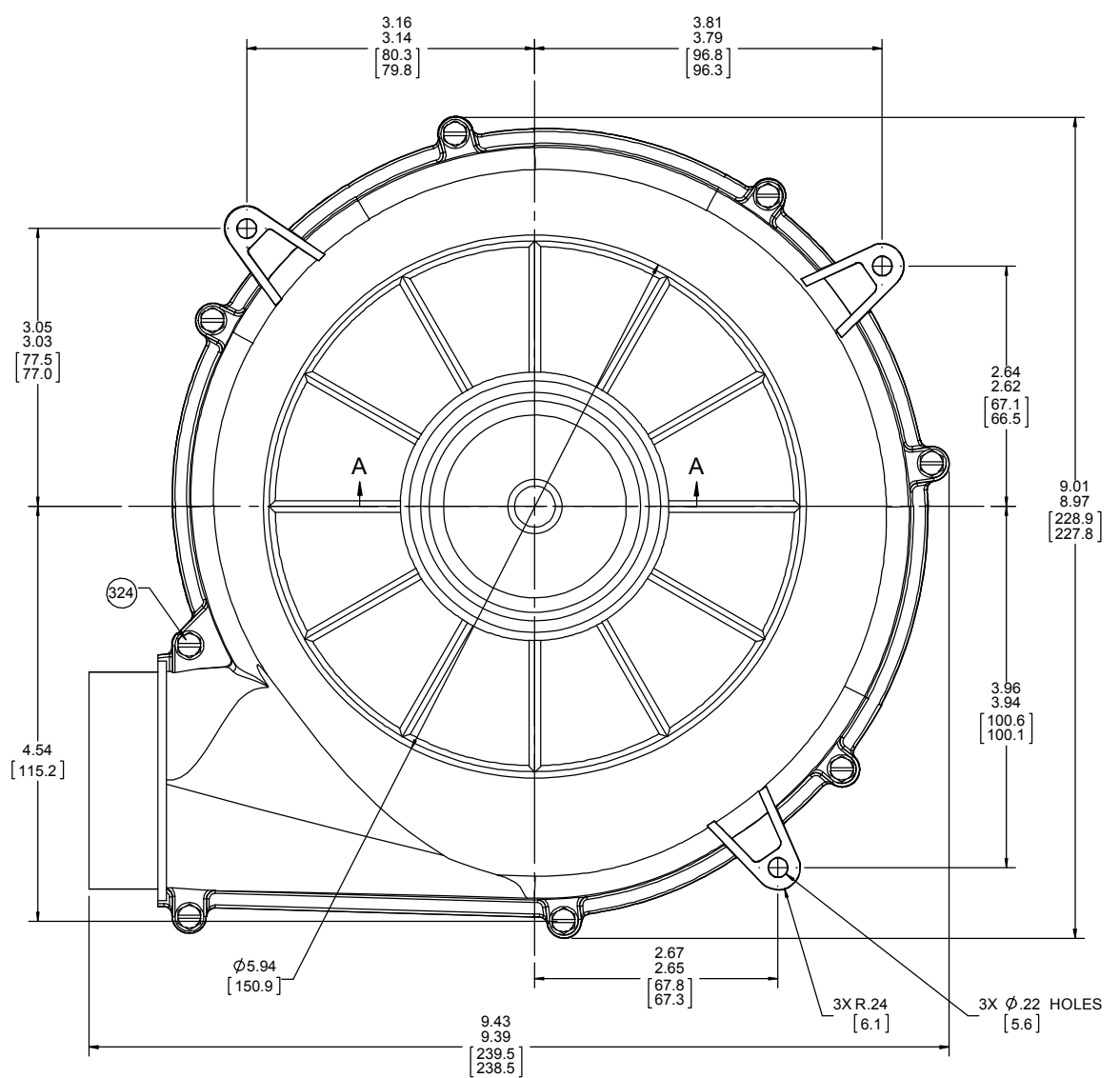
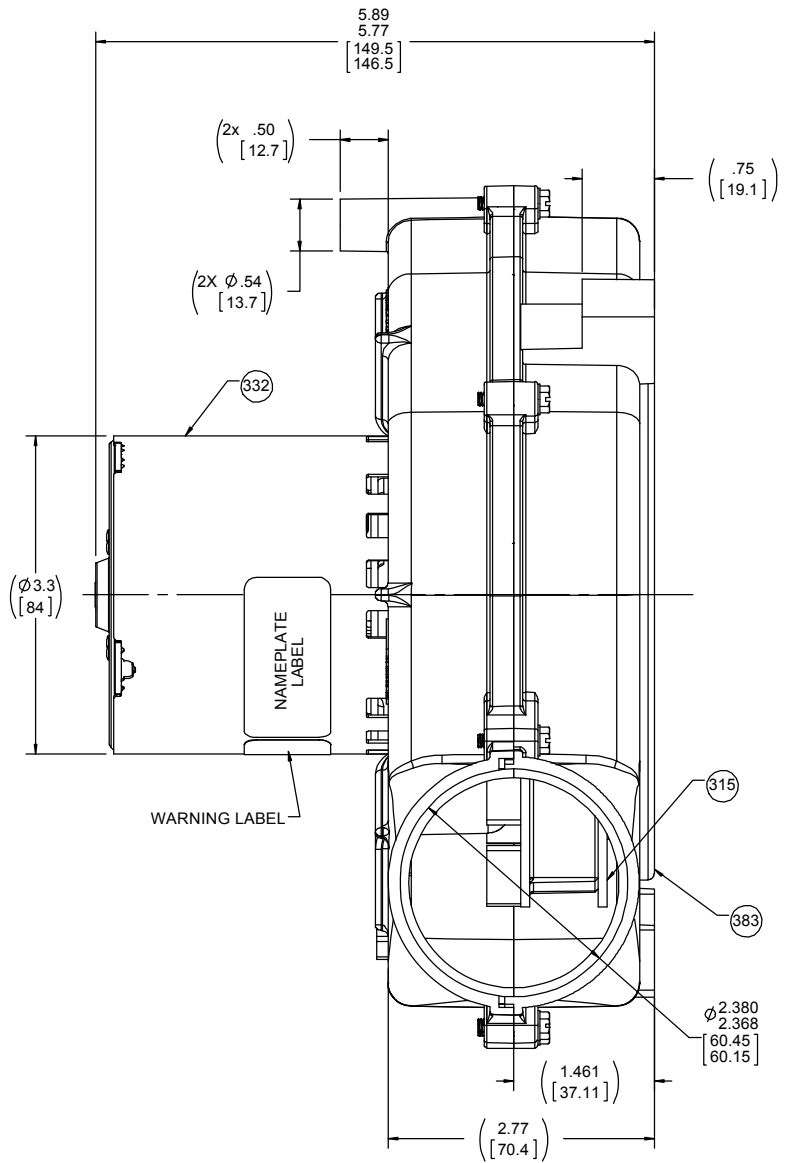
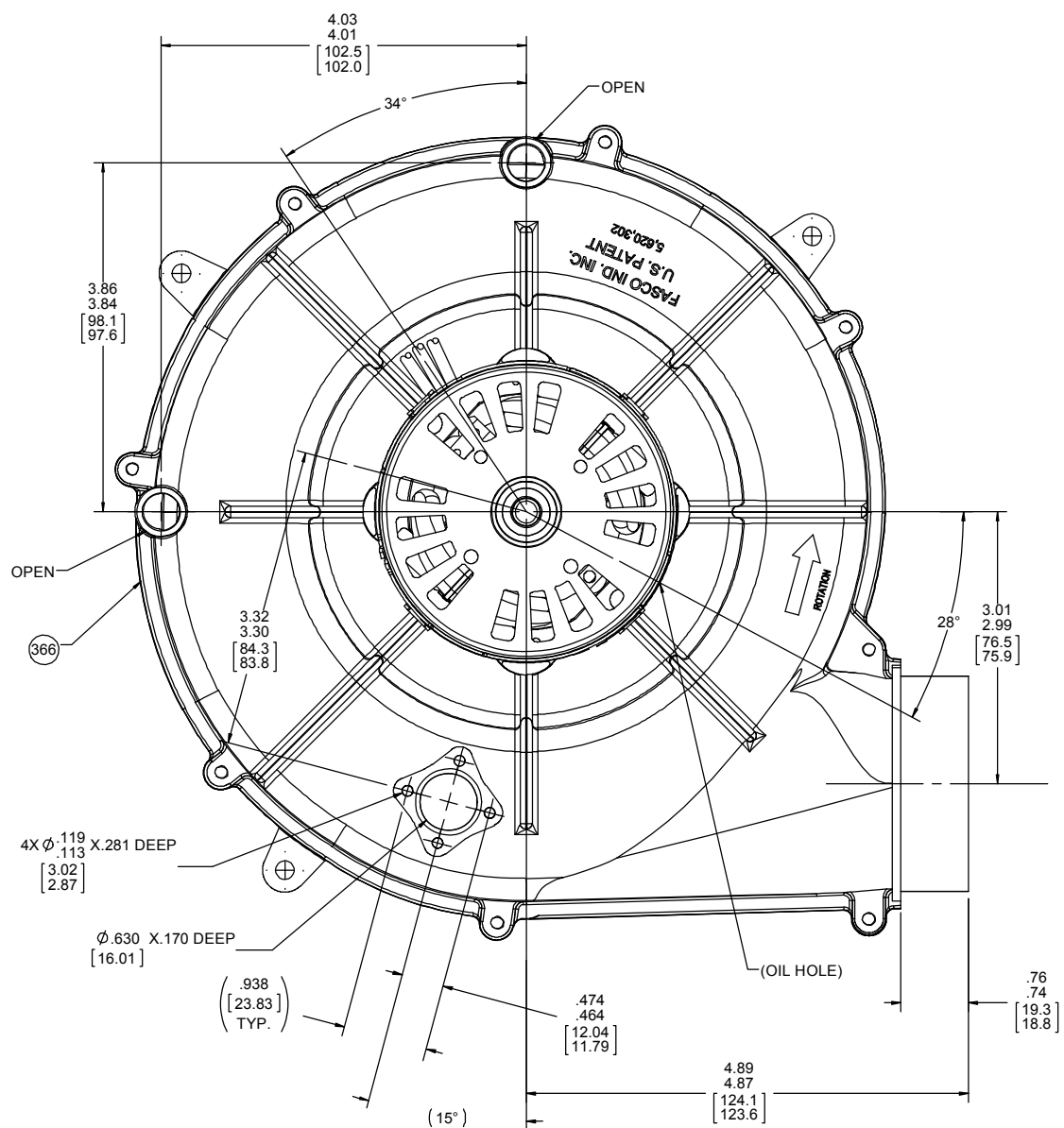
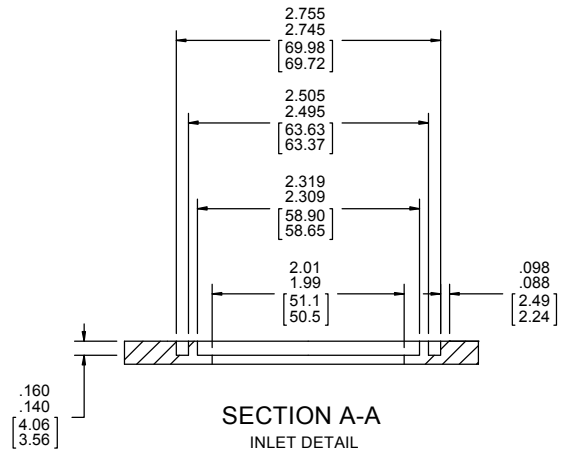
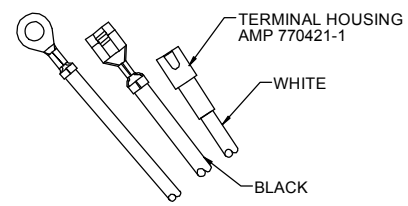
- NOTES:
 1. PACK 1 BLOWER PER CONTAINER, 12 CONTAINERS PER LAYER, 4 LAYERS PER PALLET, 48 MAX. AMOUNT PER PALLET. PER 88834200 AND 88834408.
 2. CARTON LABELS MUST ALL FACE ONE DIRECTION TOWARDS THE OPEN END OF THE PALLET. SEE 88834408.
 3. NO PACKING TAPE OVER CARTON LABEL.

THERMALLY PROTECTED CLASS "B" INSULATION SEALED BALL BEARING 416 SS SHAFT

APPLICATION:	DIST.	B	LA	FR	A	S	C	E	B	A
CUSTOMER:	FASCO DIST.	PF	21	30	F	04	DJ	5	3	0
CUSTOMER PN:	A196	FINISH: BLOWER-NATURAL, MOTOR-FLAT BLACK								

GROUND LEAD
 18 GA. 125°C 2/64 INSUL.
 X-LINKED POLY. GRN/YEL
 15.00/13.00 [381.0/330.2]

LEAD MATERIAL
 18 GA. 125°C 2/64 INSUL.
 X-LINKED POLY.
 (1) WHITE,
 7.00/5.00 [177.8/127.0]
 PIN TERM.
 AMP 350218-1
 (1) BLACK,
 11.00/9.00 [279.4/228.6]
 FSPADE TERM.
 AMP 63306-1

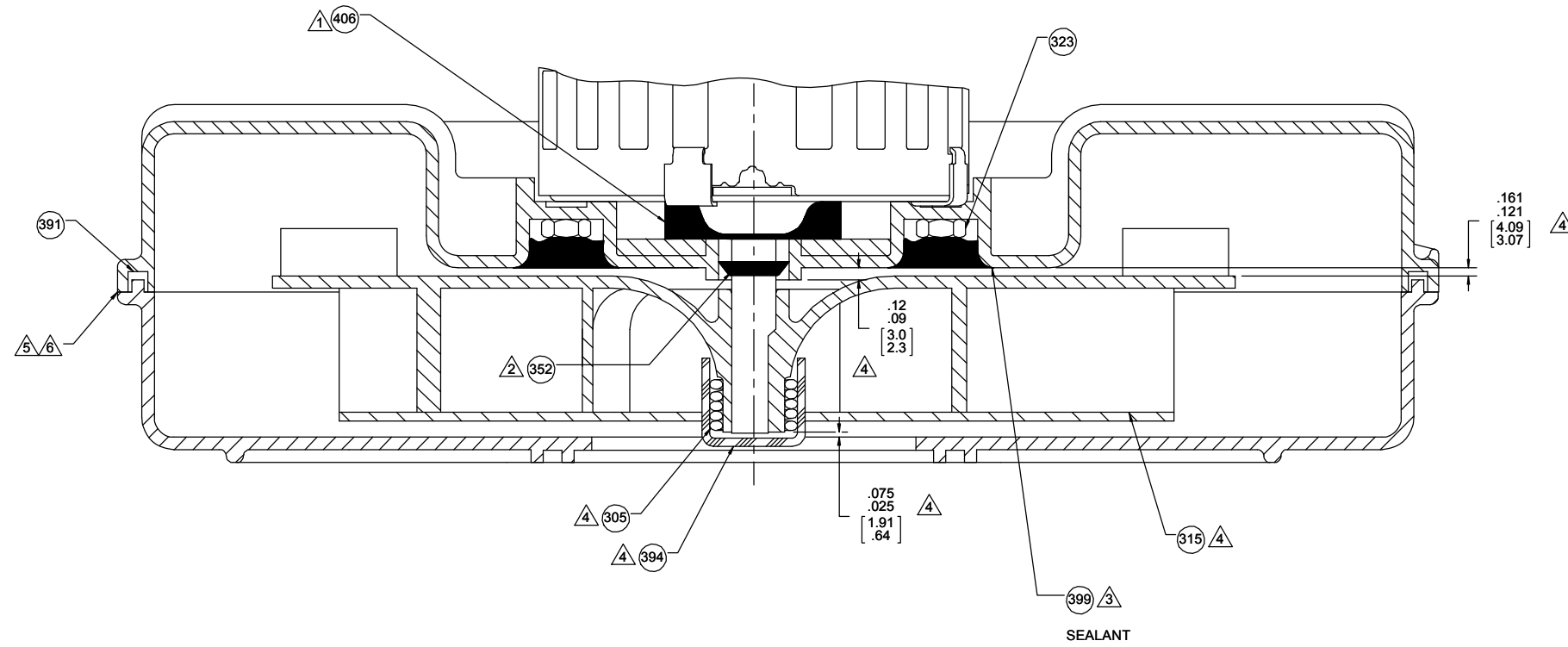


AVERAGE PERFORMANCE TEST DATA IN FREE AIR			
AT 115 VOLTS 60 Hz			
	RPM	WATTS	AMPS
	3093	115	1.48
BLOWER WEIGHT			ENDPLAY
4 1/4 LBS.			.030/.010

DRAWING REVISION	AC	REVISION BY	FDP	REV DATE/DATE	8/28/2019	TOLERANCES (EXCEPT AS NOTED):	DEC. INCH. mm ANGLE	DRAWN BY	BWB	DATE	11/13/2018	REGAL [®] Regal Beloit America, Inc.	
ECD	ECO-0172640	APPROVED BY	PLA	DATE	8/28/2019	XXX ±0.01 [±0.3]	XXX ±0.005 [±0.13]	APPROVED BY	SED	DATE	11/13/2018	DESCRIPTION	OUTLINE
EEO DESCRIPTION						REMOVE BURRS & BREAK SHARP EDGES: .003/.015 [0.08/38] X 45°	CORNER FILLETS: R.02 [±.5]	MATERIAL		PROCESS/FINISH		OUTLINE	
BLOWER WEIGHT 4 1/4 LBS.						MACHINED SURFACES: 125/ INCR/ m/IN		THIRD ANGLE PROJECTION	D	SIZE	D	DRAWING NUMBER	702111729
						DIMENSIONS IN [BRACKETS] ARE FOR REFERENCE ONLY						SHEET	1 OF 2

NOTES:

1. ASSEMBLE PC 406 SEAL TO MOTOR CENTERED OVER SHAFT WITH ADHESIVE SIDE ON MOTOR.
2. PC 352 SHAFT SEAL MUST BE LOCATED ON SHAFT AS SHOWN BELOW.
3. BEFORE ASSEMBLING IMPELLER TO SHAFT, PRESS PC 399 ROPE SEALANT AGAINST EXPOSED FACE OF NUTS TO PROTECT FROM CORROSIVES.
4. ASSEMBLE COMPRESSION RING.
5. LINE UP HOUSING HALVES WITH THREE PILOTS. SECURE WITH EIGHT SCREWS. TORQUE SCREWS TO 7 IN. LBS. MA. NO AIR GAPS ALLOWED BETWEEN HOUSING HALVES. NOTE: PLASTIC STRIPS AT TORQUE SETTINGS ABOVE 7 IN. LBS.
6. WHEN EQUIPPED WITH A WATER SEAL, EVERY 20TH BLOWER IS TO BE CHECKED FOR WATER LEAKAGE. IF LEAKERS ARE DISCOVERED, CONTACT ENGINEERING. USE 1/3 PARTS MR. BUBBLE TO 2/3 PARTS WATER.



DRAWING REVISION AC		REVISION BY FDP	REV DATE/DATE 8/28/2019	TOLERANCES (EXCEPT AS NOTED): DEC. INCH. mm ANGLE X ±0.1 [±3] ±1° XX ±0.01 [±0.3] XXX ±0.005 [±0.13] XXXX ±0.0005 [±0.013]		DRAWN BY BWB	DATE 11/13/2018		REGAL [®] Regal Beloit America, Inc.	
ECO-0172640		APPROVED BY PLA	DATE 8/28/2019	REMOVE BURRS & BREAK SHARP EDGES: .003/.015 [0.08/0.38] X 45° CORNER FILLETS: R.02 [5] MACHINED SURFACES: 125/ mm DIMENSIONS IN [BRACKETS]		APPROVED BY SED	DATE 11/13/2018		DESCRIPTION OUTLINE BLOWER ASSY	
CHANGED PACKING		COPYRIGHT (PER REVISIONS) REGAL BELLOIT AMERICA, INC. ALL RIGHTS RESERVED. PROPRIETARY AND CONFIDENTIAL INFORMATION. THIS DOCUMENT IS THE PROPERTY OF REGAL BELLOIT AMERICA, INC. CONCEPT AND CONTENT OWNERS PROPRIETARY INFORMATION. ANY PERSON, CORPORATION OR OTHER FIRM RECEIVING IT IS DEEMED, BY RECEIVING IT, TO AGREE THAT IT, AND/OR ANY PART OF IT, SHALL NOT BE DISCLOSED TO ANY PERSON, CORPORATION OR OTHER ENTITY, DUPLICATED, AND/OR USED, EXCEPT AS EXPRESSLY APPROVED IN WRITING IN ADVANCE BY OWNER. THIS DOCUMENT SHALL BE RETURNED TO OWNER UPON REQUEST. IT MAY BE SUBJECT TO CERTAIN RESTRICTIONS UNDER APPLICABLE EXPORT CONTROL LAWS AND REGULATIONS.		MATERIAL		REFERENCE	THIRD ANGLE PROJECTION	SIZE D	DRAWING NUMBER 702111729	SHEET 2 OF 2