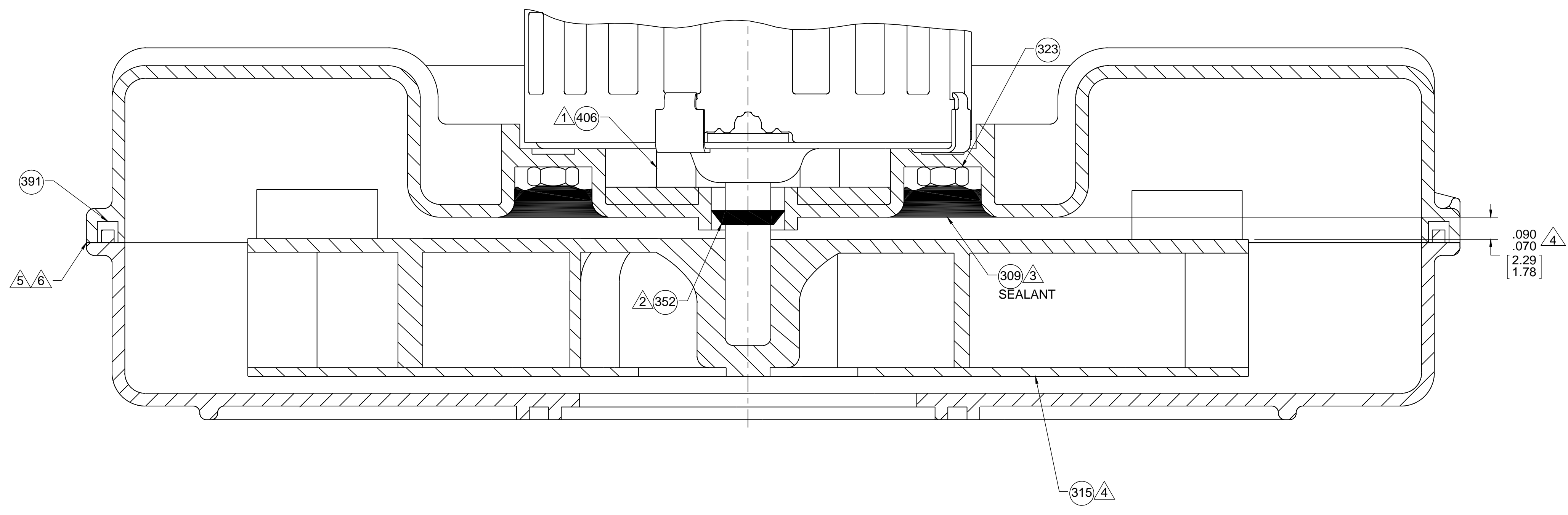




- NOTES:
1. ASSEMBLE PC 406 SEAL TO MOTOR CENTERED OVER SHAFT WITH ADHESIVE SIDE ON MOTOR.
  2. PC 352 OIL SLINGER MUST BE LOCATED ON SHAFT AS SHOWN BELOW.
  3. BEFORE ASSEMBLING IMPELLER TO SHAFT, PRESS PC 399 ROPE SEALANT AGAINST EXPOSED FACE OF NUTS TO PROTECT FROM CORROSIVES.
  4. PRESS IMPELLER ASSEMBLY ONTO SHAFT AND LOCATE SHOWN ON DRAWING.
  5. LINE UP HOUSING HALVES WITH THREE PILOTS. SECURE WITH EIGHT SCREWS. TORQUE SCREWS TO 7 IN. LBS. MAX. NO AIR GAPS ALLOWED BETWEEN HOUSING HALVES. NOTE: PLASTIC STRIPS AT TORQUE SETTINGS ABOVE 7 IN. LBS.
  6. WHEN EQUIPPED WITH A WATER SEAL, EVERY 20TH BLOWER IS TO BE CHECKED FOR WATER LEAKAGE. IF LEAKERS ARE DISCOVERED, CONTACT ENGINEERING. USE 1/3 PARTS MR. BUBBLE TO 2/3 PARTS WATER.
  7. UNIT BALANCE PER 88834409.



DRAWING REVISION		REVISION BY	PLA	DATE	10/25/2016	TOLERANCES UNLESS OTHERWISE SPECIFIED:		DRAWN BY	MLS	Regal Beloit America, Inc.	
ECO	M	APPROVED BY	KSA	DATE	10/25/2016	DEC.	INCH	mm	ANGLE		
ECO DESCRIPTION		CORRECTED WARNING LABEL LOCATION				.XX	+0.01	[+0.25]	±1°	DATE	3/10/2015
						.XXX	+0.005	[+0.127]		APPROVED BY	SDM
						XXXX	+0.0005	[+0.0127]		DATE	3/10/2015
						REMOVE BURRS & BREAK SHARP EDGES: .003/015 [076/381] X 45°				REFERENCE	
						CORNER FILLETS: R.02 [51]				MATERIAL	
						MACHINED SURFACES: 125/32/ INCH √ mm √				PROCESS/FINISH	FLAT BLACK
						mm SHOWN IN [BRACKETS]				SIZE	DRAWING NUMBER
										D	702111726
										THIRD ANGLE PROJECTION	SHEET
											2 OF 2