

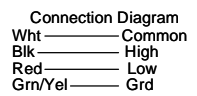
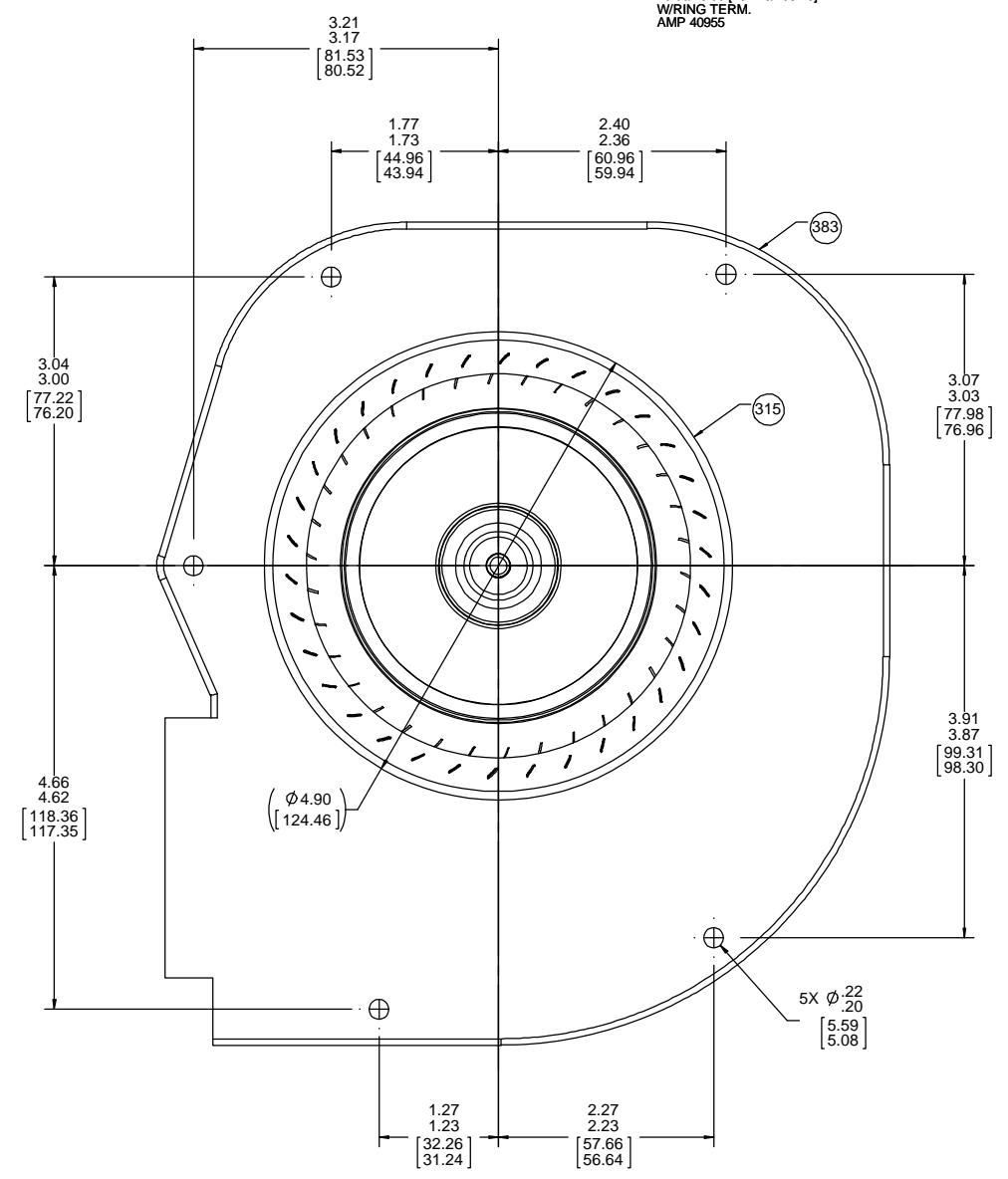
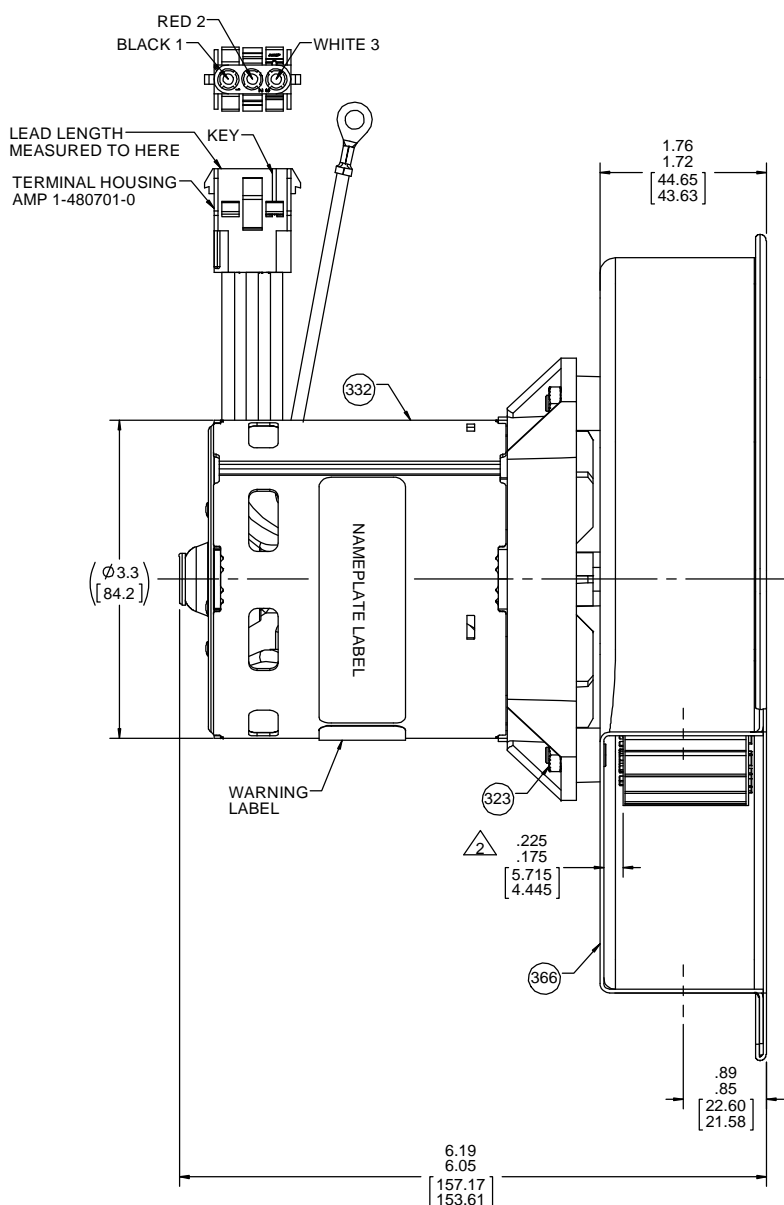
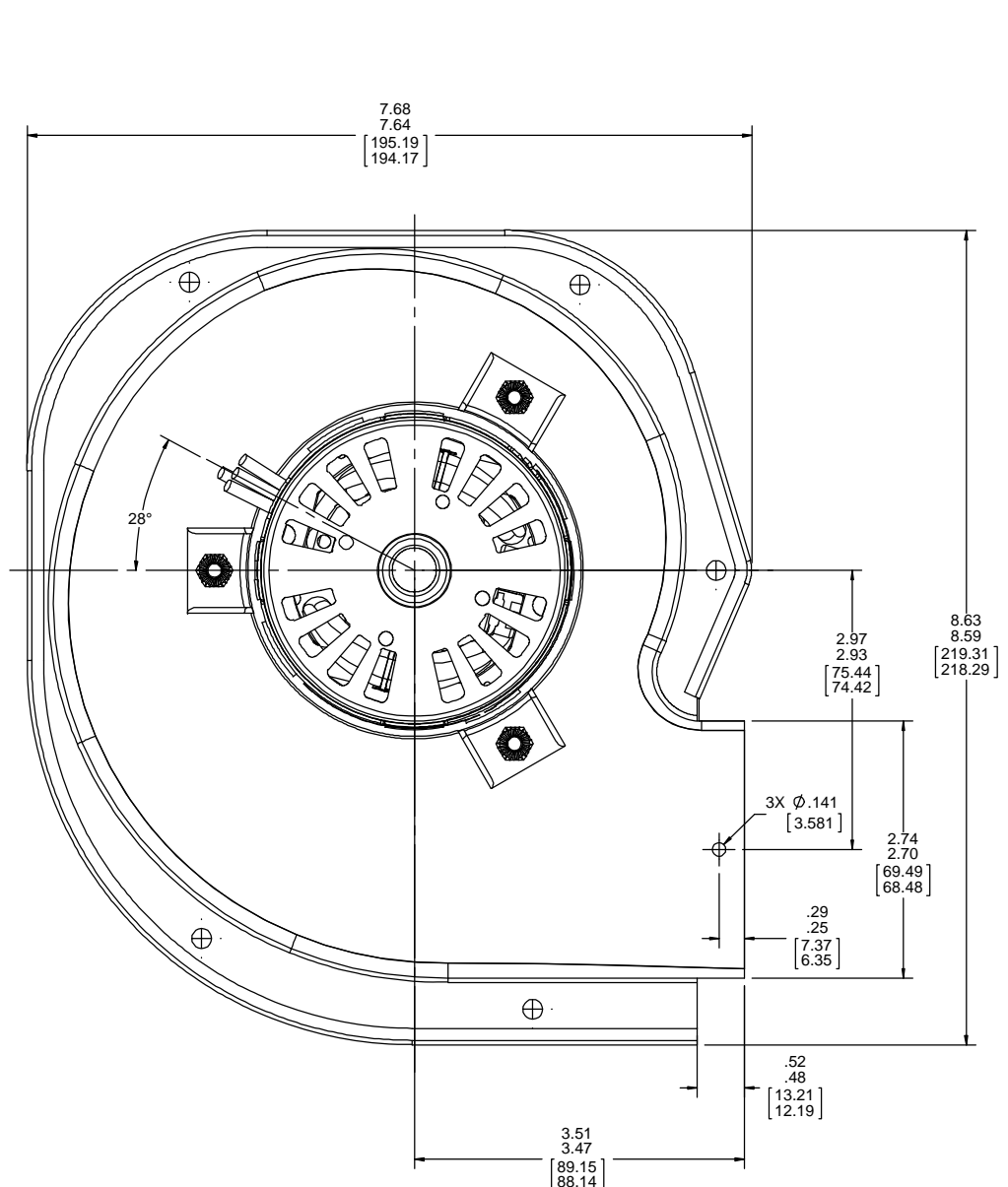
THERMALLY PROTECTED
CLASS "B" INSULATION
416 SS SHAFT

| | | | | | | | | | | |
|--------------|-------------|----|----|----|---|----|----|---|---|---|
| APPLICATION: | DIST. | B | LA | FR | A | S | C | E | B | A |
| CUSTOMER: | FASCO DIST. | GS | 21 | 47 | V | 05 | EP | 6 | 1 | 0 |
| CUSTOMER PN: | A194 | | | | | | | | | |

- NOTES:
- INSPECTION TEST FIXTURE REQUIRED.
 - DIMENSION WITH ENDPLAY PUSHED TOWARD MOTOR.
 - PLACE (1) PC 377 GASKET IN EACH CARTON.
 - PACK 1 PER CONTAINER, 80 MAX. PER PALLET.
 - PACKING ASSY. 87854335, 16 CONTAINERS PER LAYER, 5 LAYERS PER PALLET, PER 88834200 AND 88834408.
 - CARTON LABELS MUST ALL FACE ONE DIRECTION TOWARD THE OPEN END OF THE PALLET. SEE 88834408.
 - NO PACKAGING TAPE OVER CARTON LABEL.
 - BLOWER - NATURAL, MOTOR - FLAT BLACK.

LEAD MATERIAL
18 GA. 125°C 4/64 INSUL.
X-LINKED POLY.
7.00/5.00 [177.80/127.00]
(1) WHITE, (1) BLACK, (1) RED
W/PIN TERMS.
AMP 350538-1

GROUND LEAD
18 GA. 125°C 2/64 INSUL.
X-LINKED POLY.
GRN/YEL
18.00/16.00 [457.20/406.40]
W/RING TERM.
AMP 40955



| TYPICAL PERFORMANCE TEST DATA WITH A 1 5/16 INLET RESTRICTOR | | | |
|---|------------|---------|----------------------|
| AT 115 VOLTS 60 Hz | | | |
| | RPM | WATTS | AMPS |
| HIGH | 2930 | 76 | .96 |
| LOW | 1867 | 33 | .41 |
| BLOWER WEIGHT | 4 3/4 LBS. | ENDPLAY | .030/.010 [762/.254] |

| | | | | | | |
|--|--------------------|-------------------|--|--------------------|-------------------|---|
| DRAWING REVISION AA | REVISION BY MLS | DATE 8/25/2017 | TOLERANCES UNLESS OTHERWISE SPECIFIED: DEC. INCH mm ANGLE .X ±0.1 (#2.5) ±1° .XX ±0.01 (#0.25) .XXX ±0.005 (#0.127) XXXX ±0.0005 (#0.0127) | DRAWN BY MLS | DATE 8/25/2017 | DESCRIPTION OUTLINE BLOWER ASSY |
| ECO-0129732 | APPROVED BY KSA | DATE 8/25/2017 | REMOVE BURRS & BREAK SHARP EDGES: .003/.015 [0.076/.381] X 45° CORNER FILLETS: R.02 [51] MACHINED SURFACES: 125/ INCR/ 32/ m/v mm SHOWN IN [BRACKETS] | APPROVED BY KSA | DATE 8/25/2017 | MATERIAL PROCESS/FINISH SEE NOTES |
| PROPRIETARY AND CONFIDENTIAL INFORMATION - THIS DOCUMENT IS THE PROPERTY OF REGAL BELOIT AMERICA, INC. CONSENT AND CONFIRMATION OF OWNERS PROPRIETARY INFORMATION, ANY PERSON, CORPORATION OR OTHER FIRM RECEIVING IT IS DEEMED, BY RECEIVING IT, TO AGREE THAT IT, AND/OR ANY PART OF IT, SHALL NOT BE DISCLOSED TO ANY PERSON, CORPORATION OR OTHER ENTITY, DUPLICATED, AND/OR USED, EXCEPT AS EXPRESSLY APPROVED IN WRITING IN ADVANCE BY OWNER. THIS DOCUMENT SHALL BE RETURNED TO OWNER UPON REQUEST. IT MAY BE SUBJECT TO CERTAIN RESTRICTIONS UNDER APPLICABLE EXPORT CONTROL LAWS AND REGULATIONS. | | | REGAL BELLOIT AMERICA, Inc. 702111728 1 OF 1 | | | |