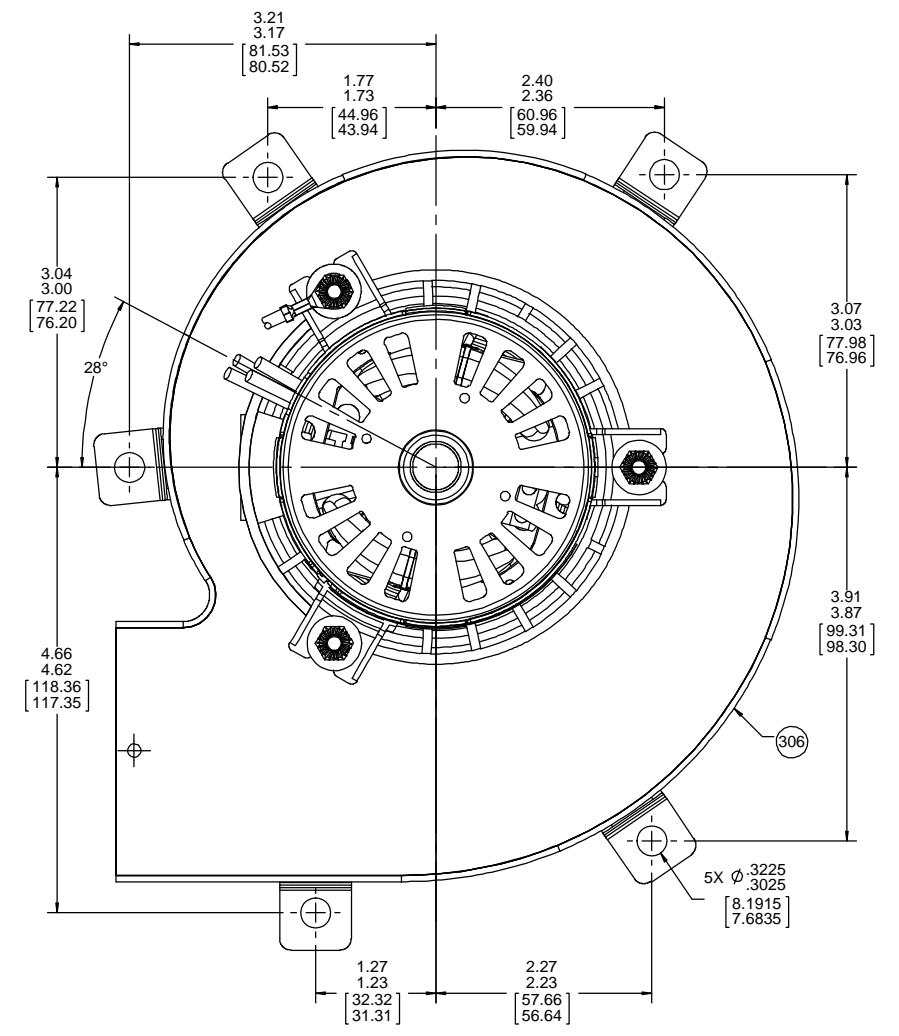
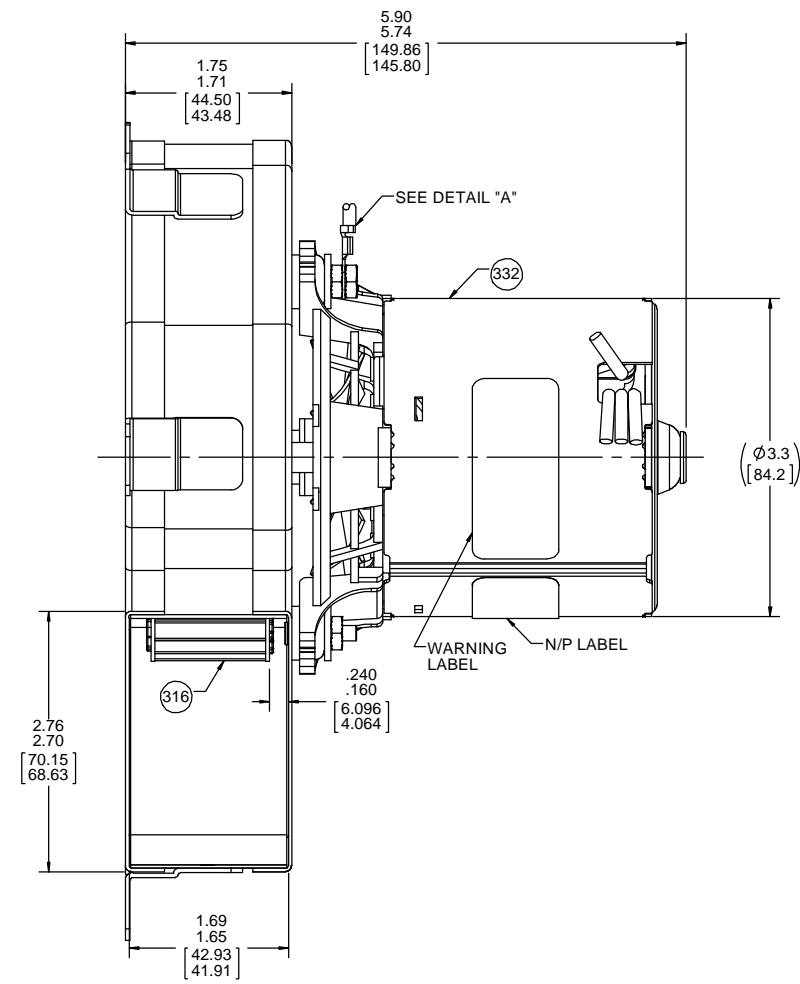
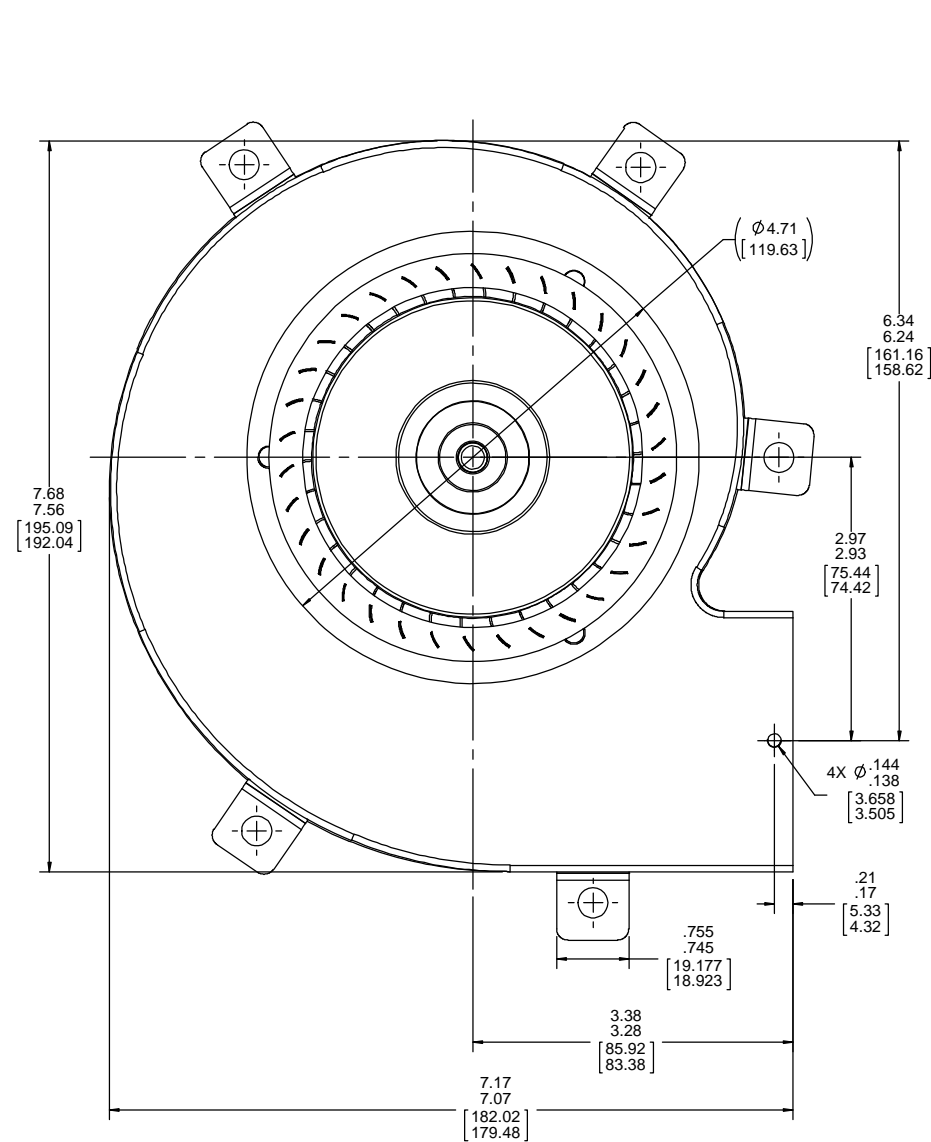
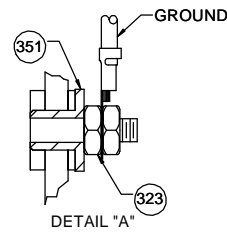


- NOTES:
1. ASSEMBLE GROUND LEAD BETWEEN (2) PC 323 NUTS.
  2. NO STA-LOC REQUIRED ON IMPELLER.
  3. 100% HYPOT 1500 V FOR ONE SECOND.
  4. AUDIT VIBRATION PERIODICALLY TO INSURE .0025 MAX. DISPLACEMENT.
  5. PACK 1 PER CONTAINER, 80 MAX. PER PALLET, PACKING ASSY. 87854335, 16 CONTAINERS PER LAYER, 5 LAYERS PER PALLET, PER 88834200 AND 88834408.
  6. PACK (1) PC 319 GASKET PER CONTAINER.
  7. CARTON LABELS MUST ALL FACE ONE DIRECTION TOWARD THE OPEN END OF THE PALLET. SEE 88834408.
  8. NO PACKAGING TAPE OVER CARTON LABEL.
  9. INSPECTION TEST FIXTURING IS REQUIRED.

THERMALLY PROTECTED  
CLASS "B" INSULATION  
416 SS SHAFT  
SEALED BALL BEARING

|              |              |    |    |    |   |    |    |   |   |   |
|--------------|--------------|----|----|----|---|----|----|---|---|---|
| APPLICATION: | DISTRIBUTION | B  | LA | FR | A | S  | C  | E | B | A |
| CUSTOMER:    | FASCO DIST.  | 12 | 21 | 47 | V | 02 | HB | 9 | 0 | 0 |
| CUSTOMER PN: | A193         |    |    |    |   |    |    |   |   |   |

LEAD MATERIAL  
18 GA. 125°C 2/64 INSUL.  
X-LINKED POLY.  
BLACK, PURPLE, RED  
25.00/23.00 [635.00/584.20]  
.56/.44 [14.22/11.18] STRIP  
GROUND LEAD MATERIAL  
GRN/YEL  
6.00/4.00 [152.40/101.60]  
WIRING TERM.  
AMP 61794-1



Connection Diagram  
Blk — Common  
Red — 240 V  
Pur — 208 V  
Grn/Yel — Grd

| TYPICAL PERFORMANCE TEST DATA<br>WITH A 1 5/16 INLET RESTRICTOR |      |       |                   |
|---|------|-------|-------------------|
| AT 240 VOLTS 60 Hz  |      |       |                   |
|   | RPM  | WATTS | AMPS              |
|   | 3273 | 67    | .44               |
| BLOWER WEIGHT<br>4.5 LBS.                                       |      |       | ENDPLAY<br>.XX/XX |

|                           |                    |                   |  |                             |                   |                    |  |                            |
|---------------------------|--------------------|-------------------|--|-----------------------------|-------------------|--------------------|--|----------------------------|
| DRAWING REVISION<br>AA    | REVISION BY<br>MLS | DATE<br>8/23/2017 | TOLERANCES UNLESS<br>OTHERWISE SPECIFIED:<br>DEC. INCH mm ANGLE<br>.X ±0.1 [±2.5] ±1°<br>.XX ±0.01 [±0.25]<br>.XXX ±0.005 [±0.127]<br>XXXX ±0.0005 [±0.0127] | DRAWN BY<br>MLS             | DATE<br>8/23/2017 | APPROVED BY<br>KSA | DATE<br>8/23/2017                        | DESCRIPTION<br>OUTLINE     |
| ECO-0129732               | APPROVED BY<br>KSA | DATE<br>8/23/2017 | REMOVED TO SOLIDWORKS  | APPROVED BY<br>KSA          | DATE<br>8/23/2017 | REFERENCE          | MATERIAL<br>PROCESS/FINISH<br>FLAT BLACK | REGAL BELLOI AMERICA, INC. |
| BLOWER WEIGHT<br>4.5 LBS. |                    |                   | ENDPLAY<br>.XX/XX  | DRAWING NUMBER<br>702111725 |                   | SHEET<br>1 OF 1    |  |                            |