

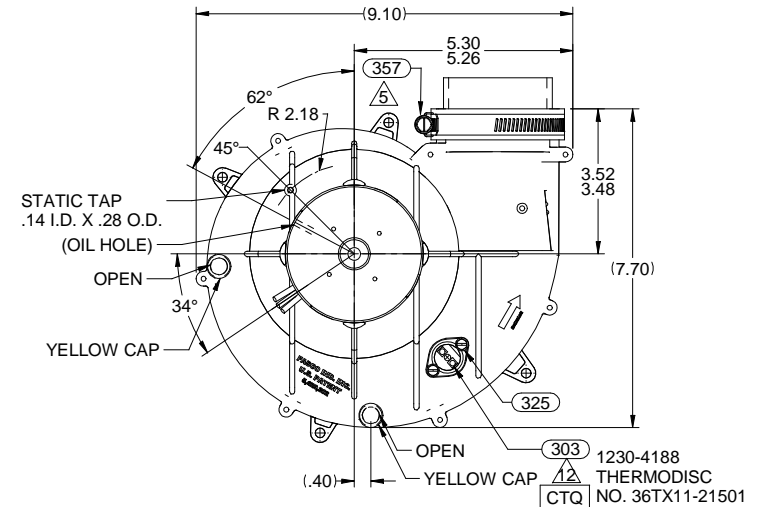
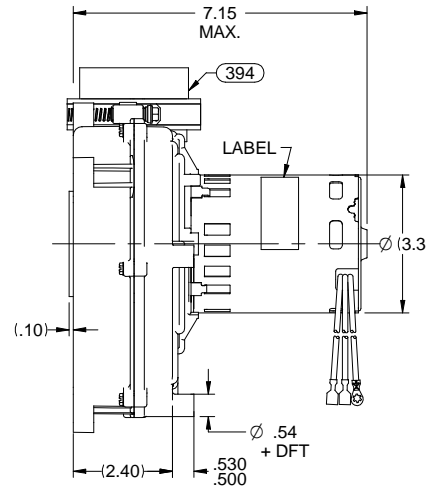
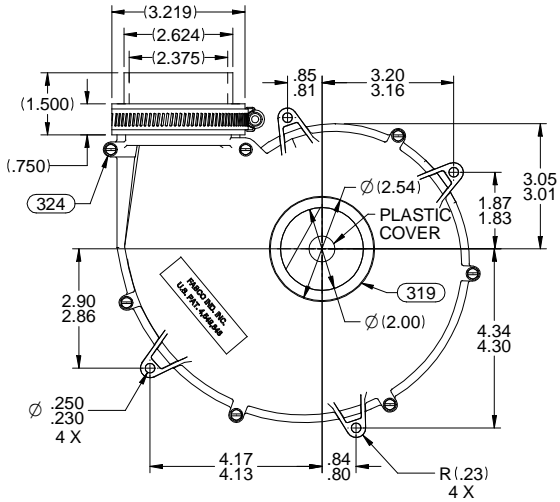
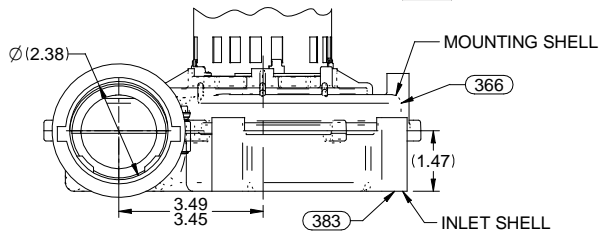
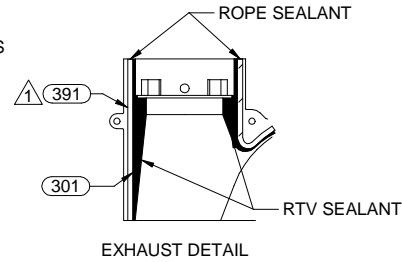
NOTES:

1. LAY ROPE SEALANT IN CHANNEL PROVIDED IN MOUNTING SHELL.
2. STATIC TAP HOLES TO BE FREE OF FLASHES.
3. ASSEMBLE INLET SHELL TO MOUNTING SHELL ASSEMBLY AND SECURE WITH (7) PC 324 SCREWS. TRIM EXCESS ROPE SEALANT FROM FACE OF BLOWER EXHAUST.
4. ASSEMBLE PC 319 GASKET AS SHOWN.
5. TIGHTEN PC 357 HOSE CLAMP SECURELY OVER THE EXHAUST ADAPTER TO 18-22 IN. LBS.
6. ASSEMBLE CLAMP SCREW HEAD AS SHOWN.
7. PACK 1 PER CONTAINER, 36 MAX. PER PALLET, PACKING ASSY: 8785-4916, 12 CONTAINERS PER LAYER, 3 LAYERS PER PALLET, P.S. 8883-4200 & 8883-4408.
8. INSPECTION TEST FIXTURING IS REQUIRED.
9. STATIC TAP READING IS TO BE 1.90" MINIMUM CORRECTED TO STANDARD AIR (0.075 LB/FT³) WITH A 1.25 IN. INLET RESTRICTOR.
10. CARTON LABELS MUST ALL FACE ONE DIRECTION TOWARD THE OPEN END OF THE PALLET. SEE P.S. 8883 4408.
11. NO PACKAGING TAPE OVER CARTON LABEL.
12. TOD SWITCH MUST HAVE PROTECTIVE SHEATH. **CTQ**

APPLICATION	90+ FURNACE									
	B	LA	FR	A	S	C	E	B	A	
	PB	21	30	F	06	CT	5	3	C	
CUSTOMER	FASCO DIST.									
CUSTOMER PART NO.	A188									

LEAD MATERIAL
 18 GA. 125°C 2/64 INS.
 X-LINKED POLY
 (1) BLACK, (1) WHITE
 20.00/18.00 IN. LONG
 MSPADE TERM. 8903-9148
 AMP #2-520102-2

GROUND LEAD
 18 GA. 125°C 2/64 INS.
 X-LINKED POLY GRN/YEL
 21.00/19.00 IN. LONG
 RING TERM 8903-9251
 AMP #60700-2



TYPICAL PERFORMANCE TEST DATA WITH 1.25 IN. INLET RESTRICTOR

CTQ = CRITICAL TO QUALITY				AT	115 VOLTS	60 HZ.
ECO. NO.	REV.	DATE	APPROVAL	R.P.M.	WATTS	AMPS
4001634	04	4/7/11	MLM/PLA	3295	110	1.6
4002786	05	07/28/2011	SDM/PLA			
4002873	06	08/05/2011	SDM/PLA			
0067425	07	12/17/2014	PLA/BGP			

UNLESS OTHERWISE SPECIFIED DIMENSIONS ARE IN INCHES TOLERANCES ARE:		
FRACTIONS	DECIMALS	ANGLES
± 1/16	XX ± .01	XXX ± .005

APPROVALS	DATE
DRAWN PLA	11/09/2005
CHECKED JHM	11/09/2005

FASCO		FASCO MOTORS GROUP AC MOTOR/BLOWER DIVISION	
CONFIDENTIAL: DO NOT DUPLICATE OR DISCLOSE TO THIRD PARTIES WITHOUT WRITTEN PERMISSION OF FASCO MOTORS GROUP, AC MOTOR/BLOWER DIVISION.			
TITLE BLOWER ASSEMBLY			
SIZE B	DWG. NO. 7021 11909	REV. 07	
DO NOT SCALE DRAWING		SHEET 1 OF 2	