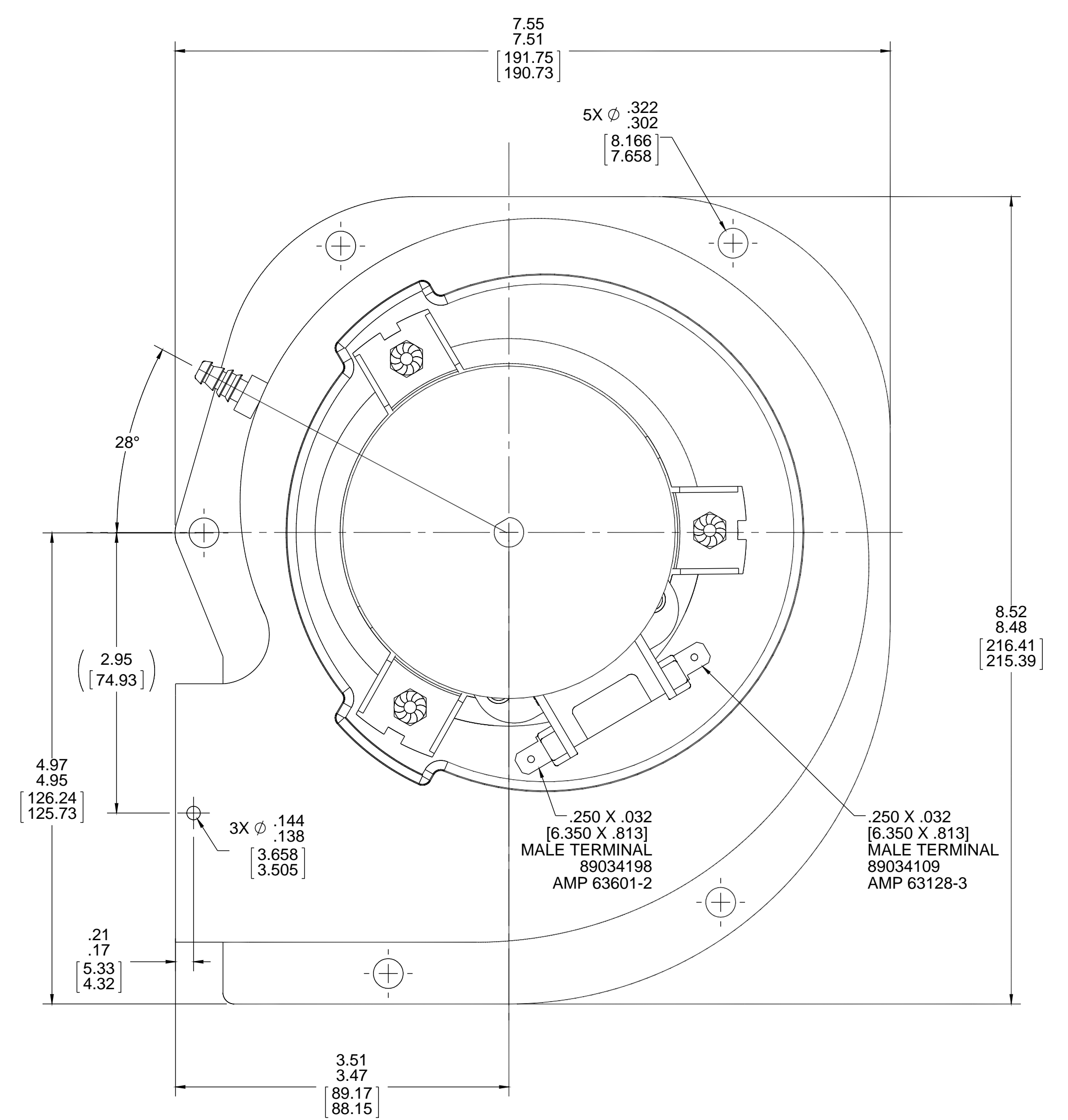
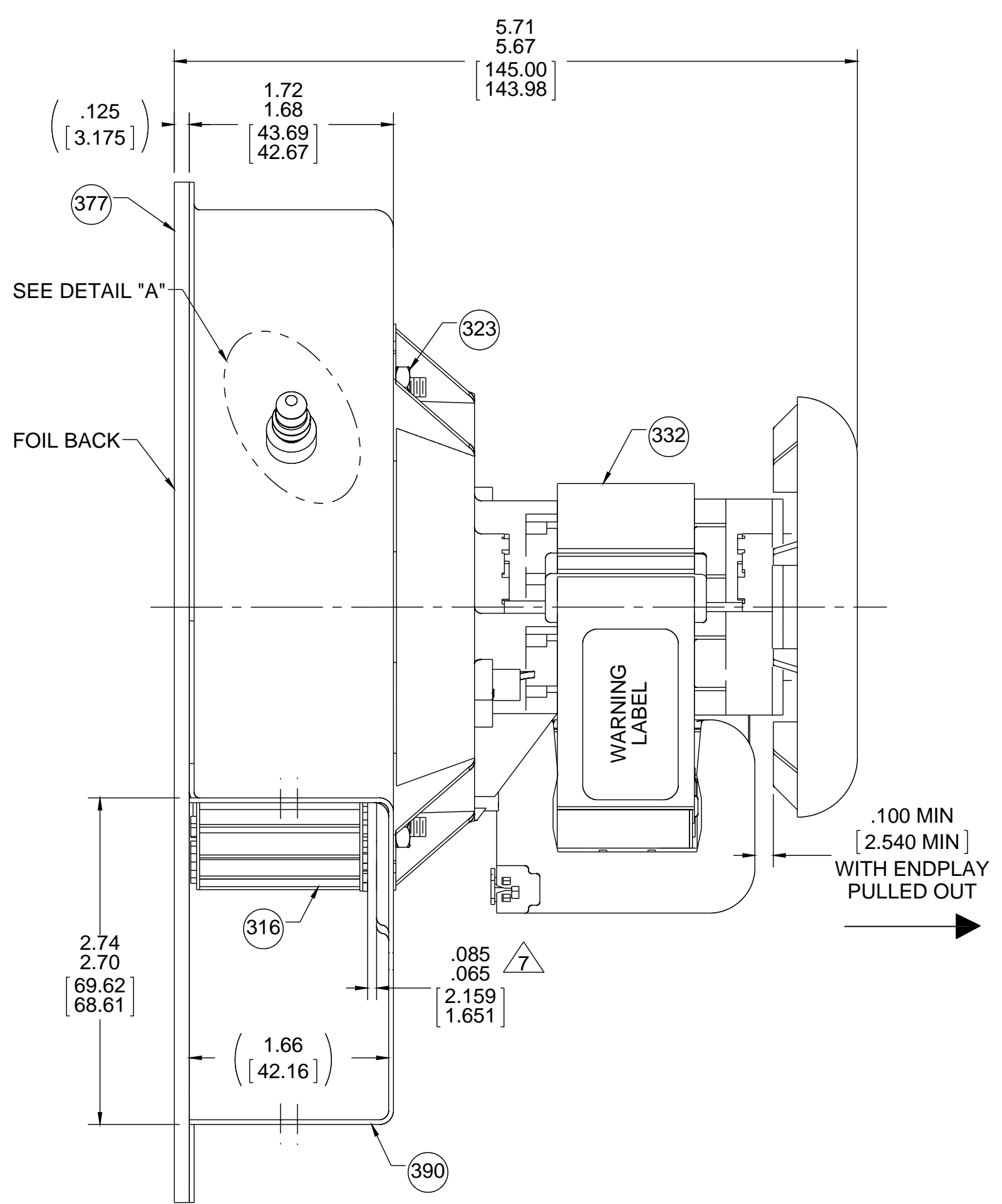
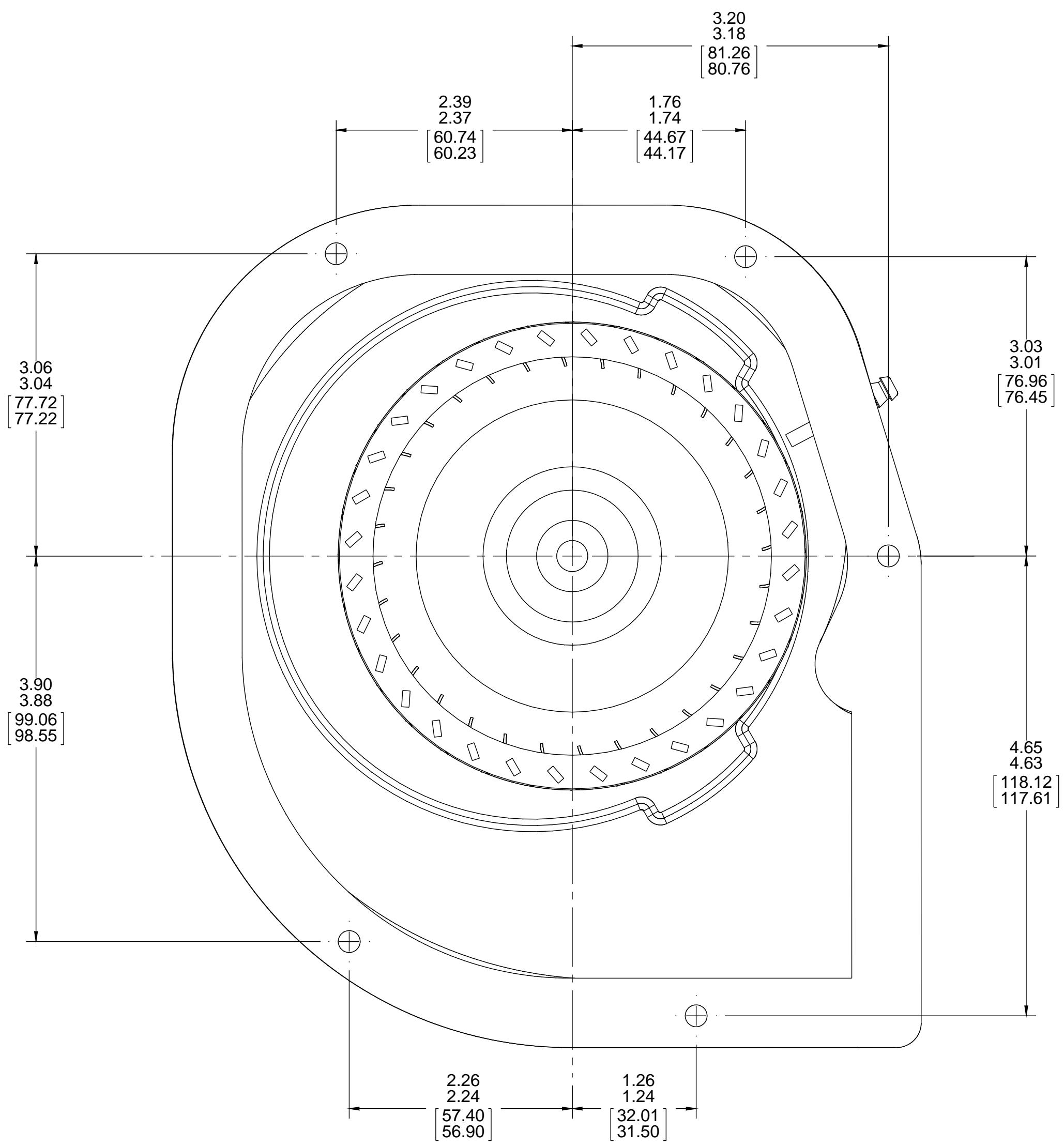
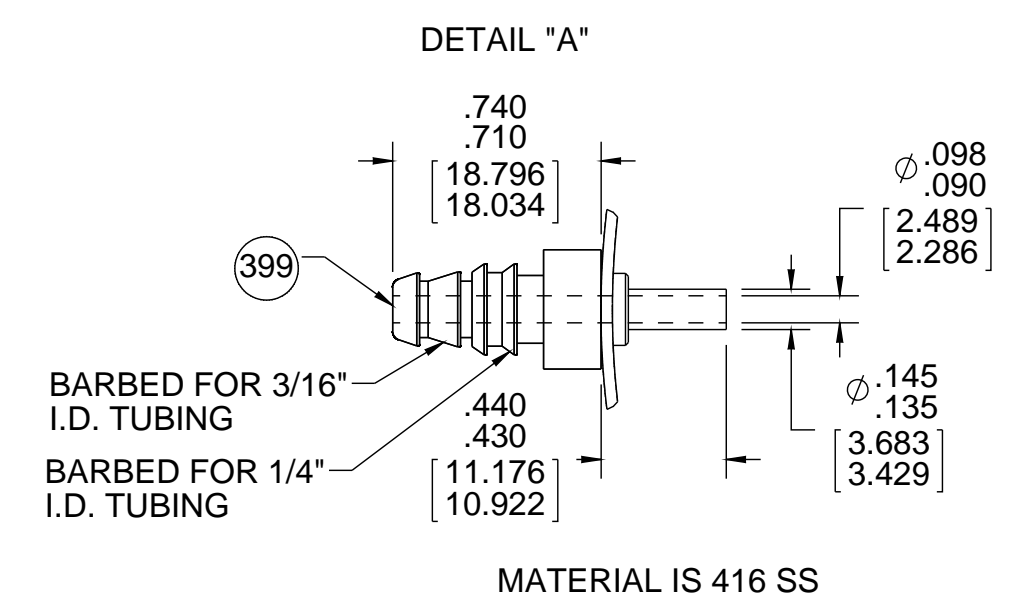


THERMALLY PROTECTED
CLASS "B" INSULATION
416 SS SHAFT

APPLICATION:	DIST.	B	LA	FR	A	S	C	E	B	A
CUSTOMER:	FASCO DIST.	HS	58	48	X	17	BG	5	3	0
CUSTOMER PN:	A182									

- NOTES:
- INSPECTION TEST FIXTURE REQUIRED.
 - TORQUE IMPELLER SET SCREW TO BE 60 LB/IN.
 - REAR SHAFT EXTENSION CAN NOT EXCEED 5.70 [144.78] MAX., OVERALL LENGTH OF BLOWER ASSEMBLY.
 - RUNOUT ON REAR COOLING FAN MUST NOT EXCEED 5.70 [144.78] MAX., OVERALL LENGTH DIMENSION NOT TO EXCEED .050 [1.27] MIN. BETWEEN GAP AND BOBBIN. FAN RUNOUT NOT TO EXCEED ± .050 [1.27].
 - STATIC TAP READING IS TO BE 1.26 MINIMUM CORRECTED TO STANDARD AIR (0.075 LB/FT³) WITH A 1 5/16 IN. INLET RESTRICTOR. STATIC TAP TO BE TIGHT AND SECURELY FASTENED.
 - IMPELLER LOCATION MEASURED FROM THE INSIDE OF THE MOTOR SHELL ON THE DISHED AREA TO BACK OF IMPELLER.
 - PACK 1 PER CONTAINER, 12 CONTAINERS PER LAYER, 4 LAYERS PER PALLET, 48 MAX. AMOUNT PER PALLET. PACKING ASSEMBLY 87855084. PER 88834200.
 - CARTON LABELS MUST ALL FACE ON DIRECTION TOWARD THE OPEN END OF THE PALLET. SEE 88834408.
 - NO PACKAGING TAPE OVER CARTON LABEL.



TYPICAL PERFORMANCE TEST DATA
WITH 1 5/16" INLET RESTRICTOR
AT 115 VOLTS 60 Hz

	RPM	WATTS	AMPS
	3216	86	1.71

DRAWING REVISION	REVISION BY	DATE	TOLERANCES UNLESS OTHERWISE SPECIFIED:	DRAWN BY	
K	JMG	05/17/2016	DEC. INCH. mm ANGLE	JMG	REGAL™ Regal Beloit America, Inc.
ECO-0101735	APPROVED BY	DATE	.XX +0.01 [-0.25]	DATE	05/17/2016
	MLM	05/17/2016	.XXX +0.005 [-0.127]	APPROVED BY	MLM
			.XXXX +0.0005 [-0.0127]	DATE	05/17/2016
			REMOVE BURRS & BREAK SHARP EDGES: .003/.015 [0.076/.381] X 45°	DESCRIPTION	BLOWER ASSY
			CORNER FILLETS: R.02 [51]	MATERIAL	
			MACHINED SURFACES: 125/32 INCH/mm	PROCESS/FINISH	NATURAL
			mm SHOWN IN [BRACKETS]	REFERENCE	
				THIRD ANGLE PROJECTION	
				SIZE	D
				DRAWING NUMBER	70581401
				SHEET	1 OF 1