

NOTES:

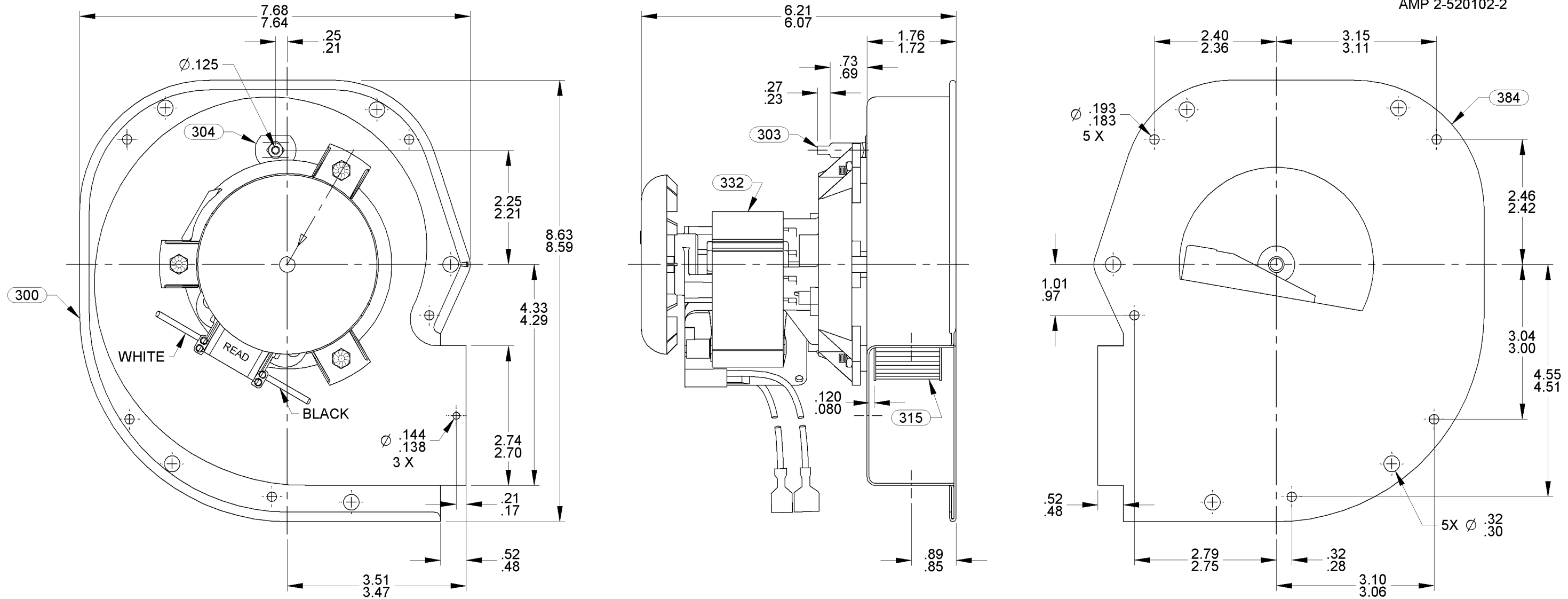
1. IMPELLER TO BE MEASURED .120/.080 FROM INSIDE OF HSG. TO BACKPLATE OF IMPELLER.
2. STATIC TAP READING IS TO BE -1.50 MINIMUM CORRECTED TO STANDARD AIR (0.075 LB/FT³) WITH A 1 5/16" INLET RESTRICTOR.
3. INSPECTION TEST FIXTURE IS REQUIRED.
4. PACK 1 PER CONTAINER, 9 PER LAYER, 3 LAYERS PER PALLET, 27 MAX. PER PALLET, PACKING ASSY. 87854915, P.S. 88834200 AND P.S. 88834408.
5. CARTON LABELS MUST ALL FACE ONE DIRECTION TOWARD THE OPEN END OF PALLET. SEE P.S. 88834408.
6. NO PACKING TAPE OVER CARTON LABEL.

APPLICATION

THERMALLY PROTECTED CLASS "B" INSULATION SEALED BALL BEARING 416 SS SHAFT

B	LA	FR	A	S	C	E	B	A
GS	58	48	X	18	OD	5	0	C
CUSTOMER		FASCO DIST.						
CUSTOMER PART NO.		A181						

LEAD MATERIAL
 18 GA. 125°C 2/64 INSUL.
 X-LINKED POLY.
 18.00/16.00 IN. LONG
 (1) WHITE,
 W/ FSPADE TERM. 89034011
 AMP 2-520183-2
 AND (1) BLACK
 W/ MSPADE TERM. 89039148
 AMP 2-520102-2



TYPICAL PERFORMANCE TEST DATA WITH A 1 5/16" INLET RESTRICTOR

AT 115 VOLTS 60 HZ.

ECO. NO.	REV.	DATE	APPROVAL	R.P.M.	WATTS	AMPS
4004387	00	01/31/2012	SDM/MLM	3208	80	1.36
4005100	01	3/28/2012	SDM/PLA			

BLOWER WEIGHT
5.5 LBS.

END PLAY
.XX/XX

UNLESS OTHERWISE SPECIFIED DIMENSIONS ARE IN INCHES TOLERANCES ARE:
 FRACTIONS ± 1/16
 DECIMALS XX ± .01
 ANGLES XXX ± .005

APPROVALS	DATE
DRAWN SDM	01/31/2012
CHECKED MLM	01/31/2012
FINISH COLOR NATURAL	

FASCO FASCO MOTORS GROUP
AC MOTOR/BLOWER DIVISION

CONFIDENTIAL: DO NOT DUPLICATE OR DISCLOSE TO THIRD PARTIES WITHOUT WRITTEN PERMISSION OF FASCO MOTORS GROUP, AC MOTOR/BLOWER DIVISION.

TITLE BLOWER ASSEMBLY		
SIZE B	DWG. NO. 7058 1810	REV. 01
DO NOT SCALE DRAWING		SHEET 1 OF 1