

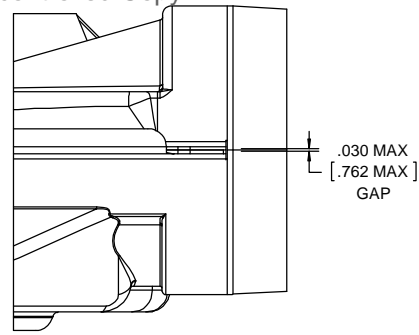
NOTES:

- IMPELLER TO BE MEASURED FROM INSIDE OF HOUSING TO BACKPLATE OF IMPELLER.
- PLACE (2) PC 319 GASKET IN EACH CONTAINER.
- STATIC TAP VACUUM TO BE -1.35 MINIMUM CORRECTED TO STANDARD AIR (0.075 LB/FT³) WITH A $\phi 1.75$ [44.45] INLET RESTRICTOR.
- NO CHANGES OR DEVIATIONS ALLOWED WITHOUT CUSTOMER APPROVAL.
- INSPECTION TEST FIXTURING IS REQUIRED.
- PACK 1 UNIT PER CONTAINER, 9 CONTAINERS PER LAYER, 3 LAYERS PER PALLET, 27 MAX. AMOUNT PER PALLET. PACKING ASSY: 87855084. PER 88834200 AND 88834408. CARTON LABELS MUST ALL FACE ONE DIRECTION TOWARD THE OPEN END OF PALLET. SEE 88834408. NO PACKING TAPE OVER CARTON LABELS.

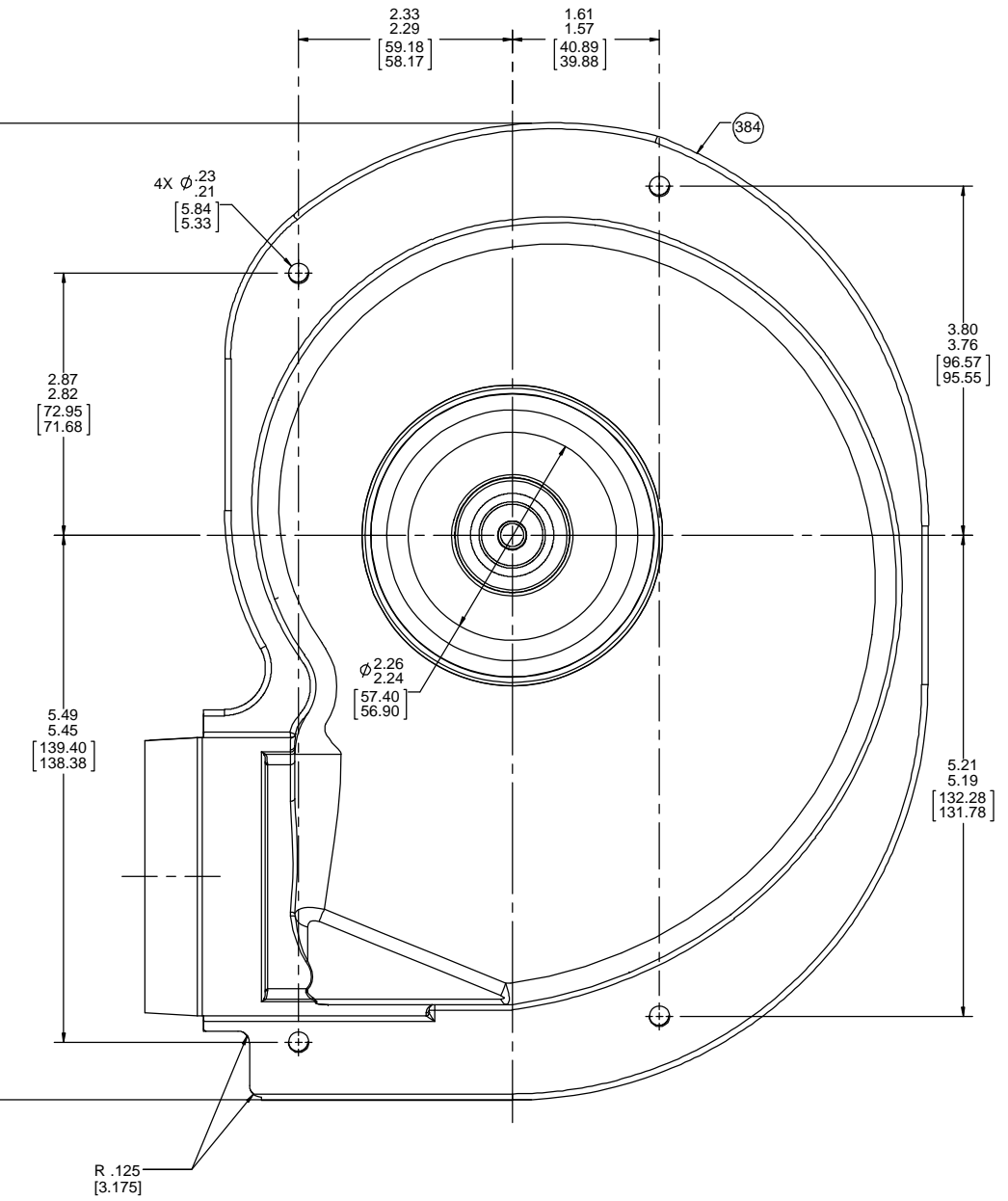
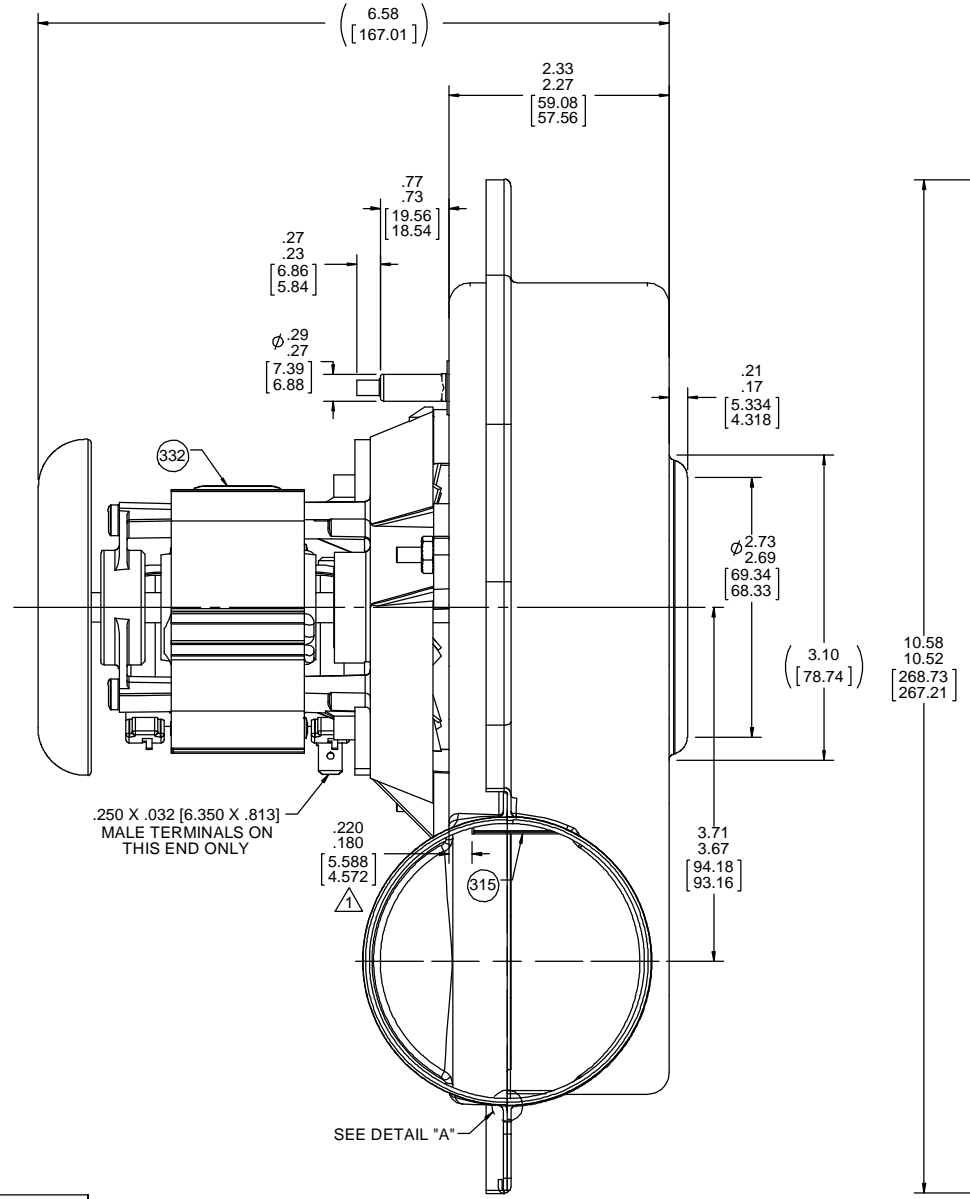
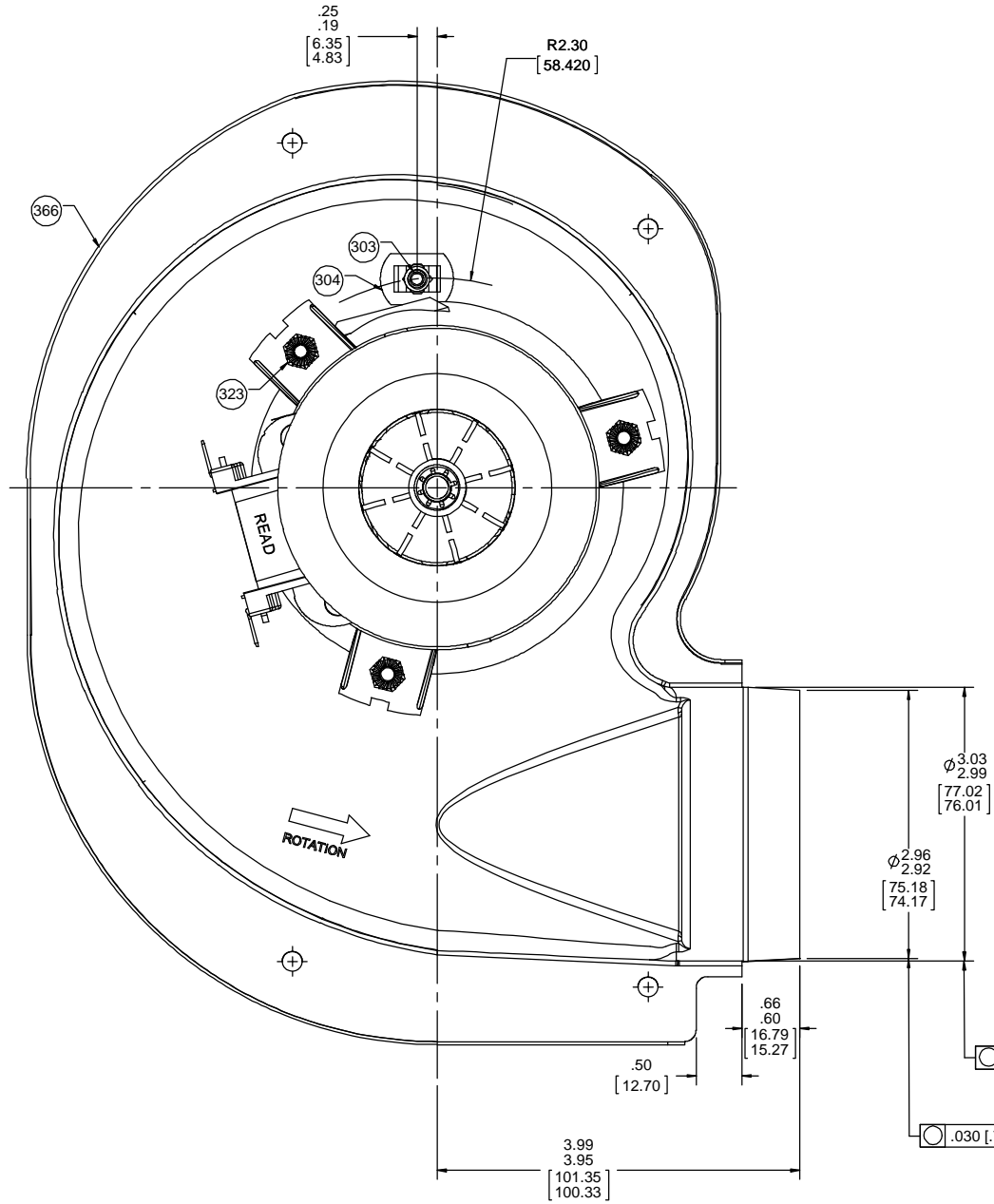
Uncontrolled Copy

THERMALLY PROTECTED CLASS "B" INSULATION SEALED BALL BEARING 416 SS SHAFT

APPLICATION:		B	LA	FR	A	S	C	E	B	A
CUSTOMER:	FASCO DIST.	GE	58	48	X	18	OW	5	0	0
CUSTOMER PN:	A172	FINISH: BLOWER - NATURAL, MOTOR - NATURAL								



DETAIL "A"



TYPICAL PERFORMANCE TEST DATA WITH 1.75" INLET RESTRICTOR AT 115 VOLTS 60 Hz

	RPM	WATTS	AMPS
	2947	91	1.6
BLOWER WEIGHT 5 1/2 LBS.			ENDPLAY .XX/XX

DRAWING REVISION AB	REVISION BY FDP	DATE 9/24/2018	TOLERANCES UNLESS OTHERWISE SPECIFIED: DEC. INCH mm ANGLE .X ±0.1 [±2.5] .XX ±0.01 [±0.25] .XXX ±0.005 [±0.127] XXX ±0.0005 [±0.0127]	DRAWN BY FDP	DATE 5/14/2018	REGAL Regal Beloit America, Inc.
ECO-0152954	APPROVED BY MLS	DATE 9/24/2018	REMOVE BURRS & BREAK SHARP EDGES: .003/.015 [.076/ .381] X 45° CORNER FILLETS: R.02 [.51] MACHINED SURFACES: 125 INCR/ mlv mm SHOWN IN [BRACKETS]	APPROVED BY SED	DATE 5/14/2018	DESCRIPTION OUTLINE BLOWER ASSY.
COPYRIGHT REGAL BELOIT AMERICA, INC. ALL RIGHTS RESERVED. PROPRIETARY AND CONFIDENTIAL INFORMATION - THIS DOCUMENT IS THE PROPERTY OF REGAL BELOIT AMERICA, INC. CONSENT AND CONFIRMATION OWNERS PROPRIETARY INFORMATION, ANY PERSON, CORPORATION OR OTHER FIRM RECEIVING IT IS DEEMED, BY RECEIVING IT, TO AGREE THAT IT, AND/OR ANY PART OF IT, SHALL NOT BE DISCLOSED TO ANY PERSON, CORPORATION OR OTHER ENTITY, DUPLICATED, AND/OR USED, EXCEPT AS EXPRESSLY APPROVED IN WRITING IN ADVANCE BY OWNER. THIS DOCUMENT SHALL BE RETURNED TO OWNER UPON REQUEST. IT MAY BE SUBJECT TO CERTAIN RESTRICTIONS UNDER APPLICABLE EXPORT CONTROL LAWS AND REGULATIONS.			DATE 5/14/2018	REFERENCE	MATERIAL	PROCESS/FINISH
BLOWER WEIGHT 5 1/2 LBS.		ENDPLAY .XX/XX	THIRD ANGLE PROJECTION	SIZE D	DRAWING NUMBER 70581058	SHEET 1 OF 1