

THERMALLY PROTECTED
CLASS B INSULATION
SEALED BALL BEARING-MUST
HAVE DOW CORING 44
GREASE 303 SS SHAFT

| | | | | | | | | | | |
|--------------|--------------|---|----|----|---|----|----|---|---|---|
| APPLICATION: | DISTRIBUTION | B | LA | FR | A | S | C | E | B | A |
| CUSTOMER: | FASCO DIST. | PO | 62 | 30 | V | 03 | CN | 5 | 0 | 0 |
| CUSTOMER PN: | A171 | FINISH: BLOWER - FLAT BLACK, MOTOR - FLAT BLACK | | | | | | | | |

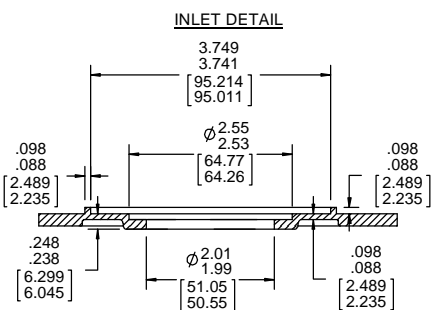
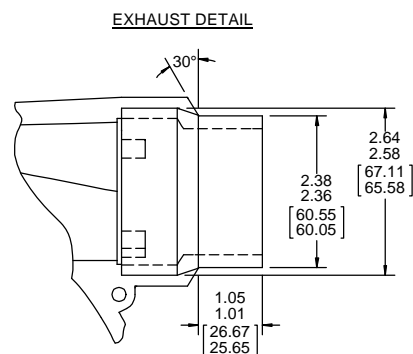
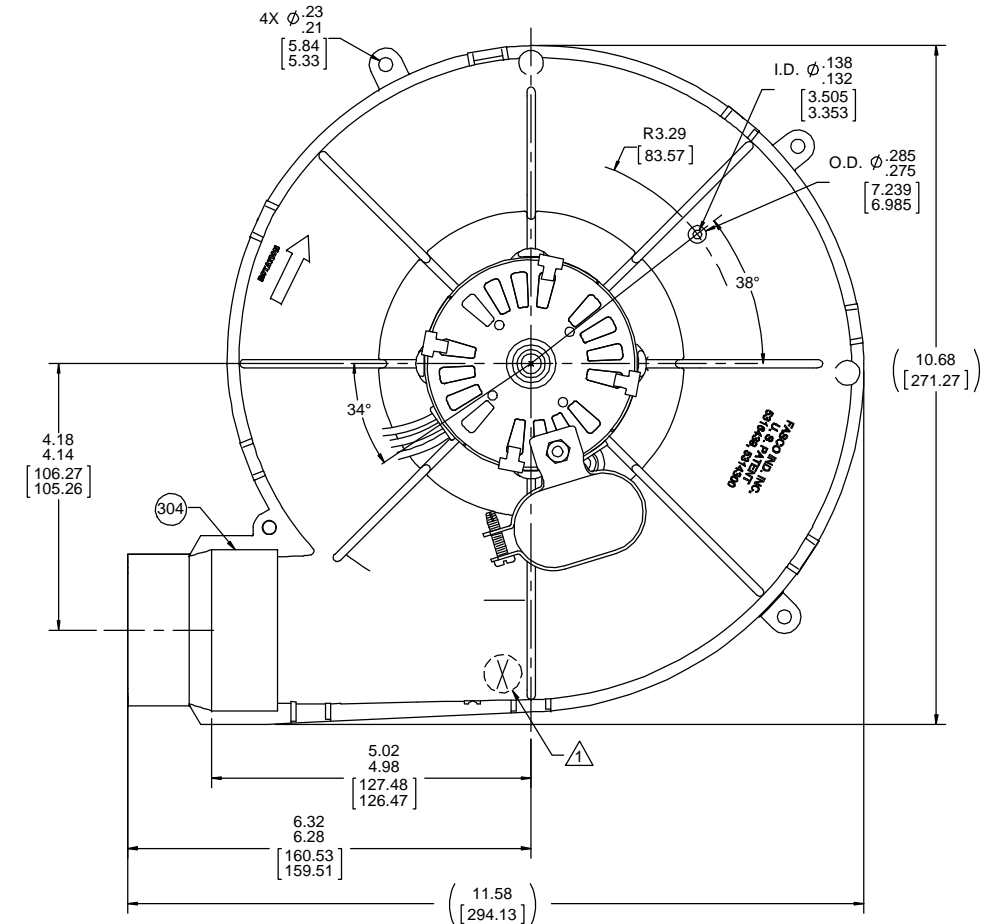
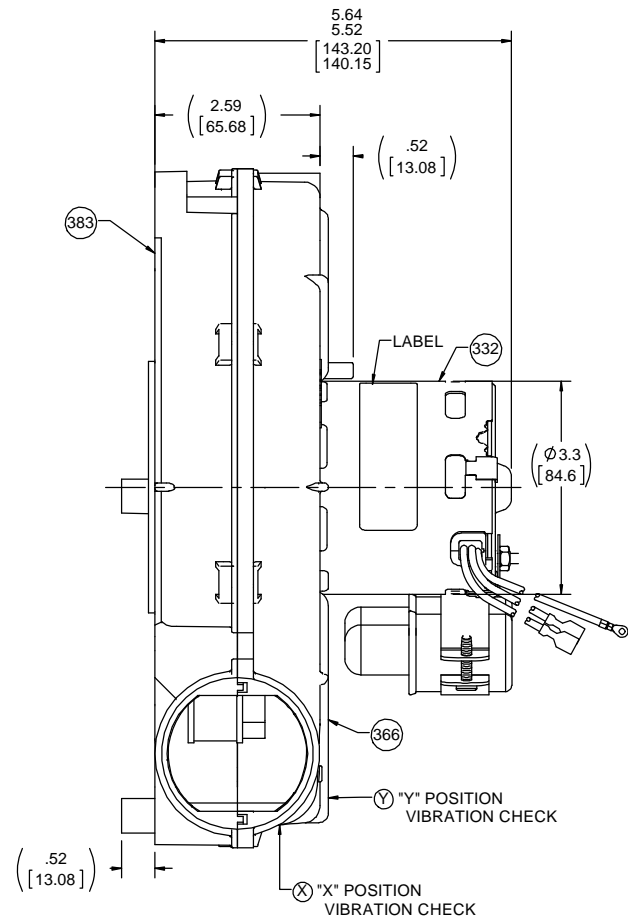
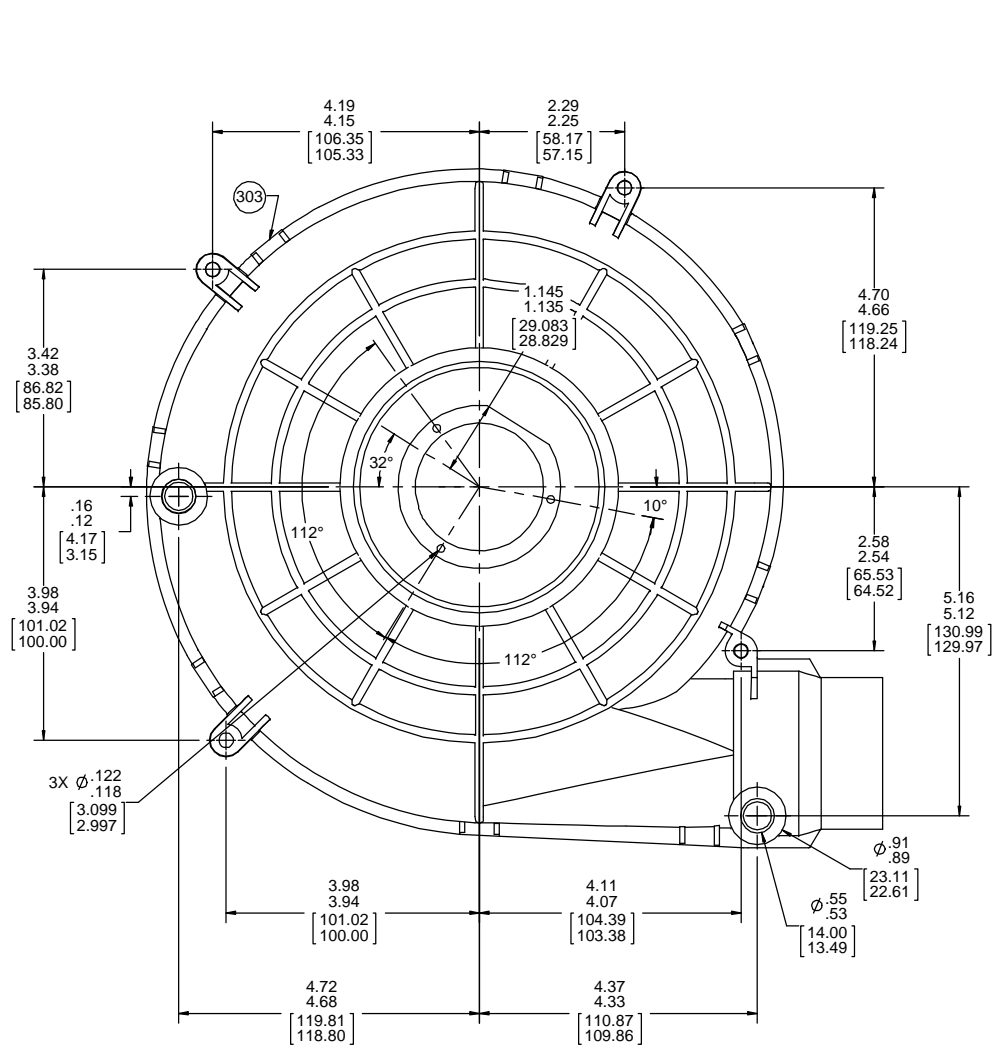
LEAD MATERIAL
18 GA. 125°C 2/64 INSUL.
X-LINKED POLY. BLK
AND WHT
8.00/6.00 [203.20/152.40]
W/ MSPADE TERM.
AMP 2-520102-2

CAPACITOR LEADS
X-LINKED POLY. (2) BRN

GROUND LEAD
GRN/YEL
10.50/8.50 [266.70/215.90]
W/ RING TERM.
AMP 60700-2

NOTES:

1. DESIGNATES LOCATION BACK FROM EXHAUST TO CHECK X & Y.
2. UNIT BALANCED PER 88834409.
3. MAX DISPLACEMENT OF 1.5 MIL IN THE "X" & "Y" DIRECTIONS AT FINAL UNIT BALANCE.
4. STATIC TAP READING IS TO BE -2.0 MINIMUM CORRECTED TO STANDARD AIR (0.075 LB/FT³) WITH A 1/4" INLET RESTRICTOR.
5. BLOWER MUST START AT 101 VOLTS.
6. PACK 1 PC 386 KIT IN EACH CONTAINER WITH BLOWER.
7. PACK 1 PER CONTAINER, 6 CONTAINERS PER LAYER, 3 LAYERS PER PALLET, 18 MAX. PER PALLET PACKING ASSY: 87854916, PER 88834200 AND 88834408.
8. STUFF PAPER TO SECURE HOUSING.
9. CHECK EVERY BLOWER FOR STATIC VACUUM.
10. TEST WITH 1 1/4 IN. INLET RESTRICTOR.
11. CARTON LABELS MUST ALL FACE ONE DIRECTION TOWARD THE OPEN END OF THE PALLET. SEE 88834408.
12. NO PACKING TAPE OVER CARTON LABEL.

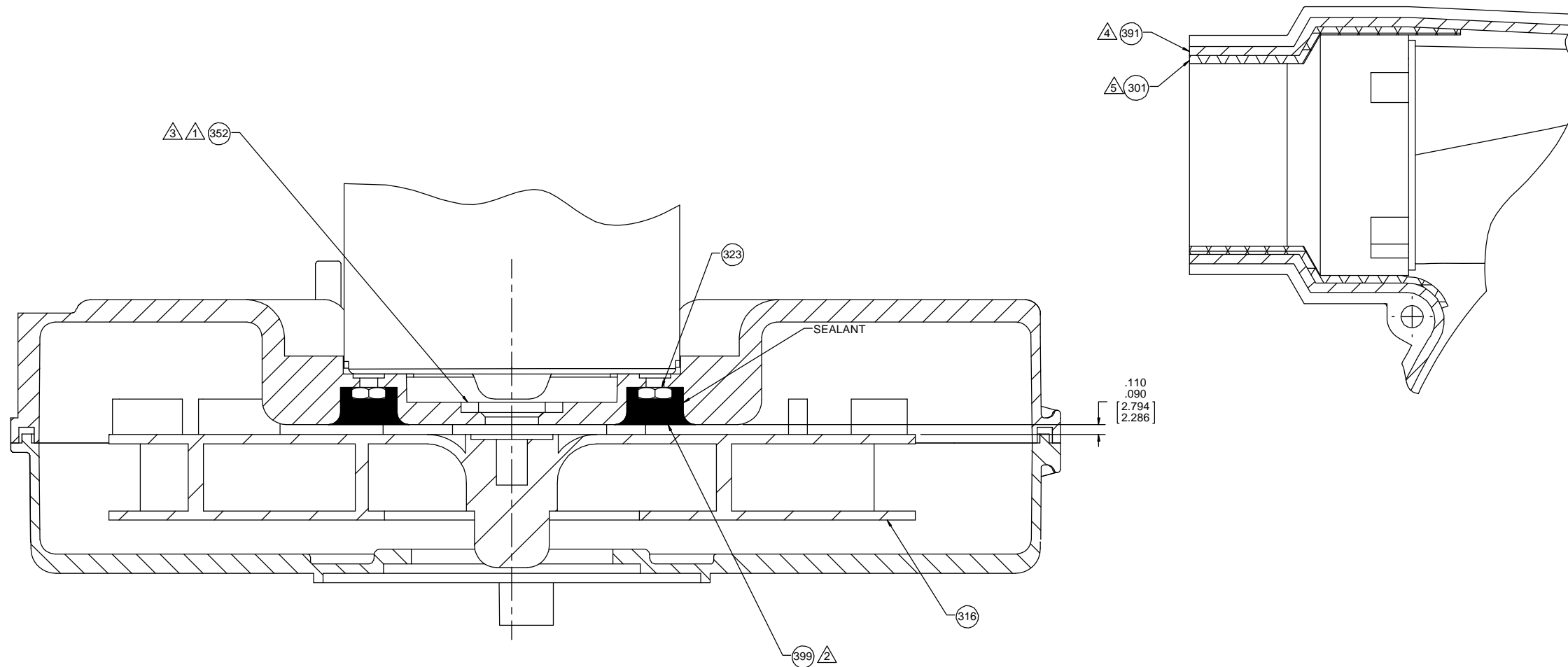


| AVERAGE PERFORMANCE TEST DATA WITH 1 1/4 INLET RESTRICTOR AT 115 VOLTS 60 Hz | | 4.0 MFD 370 VAC | |
|--|------------|-----------------|----------------|
| | RPM | WATTS | AMPS |
| | 3459 | 78 | .74 |
| BLOWER WEIGHT | 5 3/8 LBS. | | ENDPLAY .XX/XX |

| | | | | | | | | |
|--|-------------|-----------|---|------------------------|-----------|--------------------------------|-----------|---------------------|
| DRAWING REVISION | REVISION BY | DATE | TOLERANCES UNLESS OTHERWISE SPECIFIED: | DRAWN BY | DATE | APPROVED BY | DATE | DESCRIPTION |
| ECO-0152954 | FDP | 9/24/2018 | DEC. INCH mm ANGLE | MLS | 5/12/2015 | MLS | 5/12/2015 | OUTLINE BLOWER ASSY |
| | MLS | 9/24/2018 | .X ±0.1 [2.5] | | | | | |
| | | | .XX ±0.01 [0.25] | | | | | |
| | | | .XXX ±0.005 [0.127] | | | | | |
| | | | XXX ±0.005 [0.127] | | | | | |
| | | | REMOVE BURRS & BREAK SHARP EDGES: .003/.015 [0.076/.381] X 45° CORNER FILLETS: R.02 [51] MACHINED SURFACES: 125/ INC/ m/v | | | | | |
| <small>PROPRIETARY AND CONFIDENTIAL INFORMATION - THIS DOCUMENT IS THE PROPERTY OF REGAL BELLOIT AMERICA, INC. CONCEPTS AND CONTENTS OWNERS PROPRIETARY INFORMATION. ANY PERSON, CORPORATION OR OTHER FIRM RECEIVING IT IS DEEMED, BY RECEIVING IT, TO AGREE THAT IT, AND/OR ANY PART OF IT, SHALL NOT BE DISCLOSED TO ANY PERSON, CORPORATION OR OTHER ENTITY, DUPLICATED, AND/OR USED, EXCEPT AS EXPRESSLY APPROVED IN WRITING IN ADVANCE BY OWNER. THIS DOCUMENT SHALL BE RETURNED TO OWNER UPON REQUEST. IT MAY BE SUBJECT TO CERTAIN RESTRICTIONS UNDER APPLICABLE EXPORT CONTROL LAWS AND REGULATIONS.</small> | | | | THIRD ANGLE PROJECTION | | SIZE D DRAWING NUMBER 70625666 | | SHEET 1 OF 2 |

NOTES:

1. APPLY PC 410 LUBRICANT BEFORE ASSEMBLING PC 352 SHAFT SEAL. SHAFT SEAL MUST BE LOCATED ON SHAFT AS SHOWN BELOW.
2. BEFORE ASSEMBLING IMPELLER TO SHAFT, PRESS PC 399 ROPE SEALANT AGAINST EXPOSED FACE OF NUTS TO PROTECT THEM FROM CORROSIVES.
3. WHEN EQUIPPED WITH A WATER SEAL, EVERY 40TH BLOWER IS TO BE CHECKED FOR WATER LEAKAGE. IF LEAKERS ARE DISCOVERED CONTACT ENGINEERING. (USE 1/3 PARTS MR. BUBBLE WITH 2/3 PARTS WATER FOR LEAK TEST).
4. LAY PC 391 ROPE SEALANT IN CHANNEL PROVIDED IN MOUNTING SHELL.
5. APPLY PC 301 RTV SEALANT TO SHADED AREA OF MOUNTING SHELL AS SHOWN BEFORE ASSEMBLY OF CLIPS. ASSEMBLE INLET SHELL TO MOUNTING SHELL ASSY. AND SECURE WITH (8) PC 303 CLIPS.
6. TRIM EXCESS ROPE SEALANT FROM FACE OF BLOWER EXHAUST.



| | | | | | | | | | | | |
|---|--|-------------|-----------|--|---------|-----------|-------|------------------------|-----------|----------------------------|--|
| DRAWING REVISION | | REVISION BY | DATE | TOLERANCES UNLESS OTHERWISE SPECIFIED: | | DRAWN BY | | MLC | | Regal Beloit America, Inc. | |
| ECO-0152954 | | FDP | 9/24/2018 | DEC. | INCH | mm | ANGLE | DATE | 5/12/2015 | DESCRIPTION | |
| ECO DESCRIPTION | | MLS | 9/24/2018 | .X | ±0.1 | [±2.5] | ±0.5° | APPROVED BY | SDM | OUTLINE | |
| UPDATED PACKING INFO | | | | .XX | ±0.01 | [±0.25] | | DATE | 5/12/2015 | MATERIAL | |
| CORPORATE RIGHTS RESERVED. PROPRIETARY AND CONFIDENTIAL INFORMATION - THIS DOCUMENT IS THE PROPERTY OF REGAL BELOIT AMERICA, INC. CONCEPTS AND CONTENTS OWNERS PROPRIETARY INFORMATION. ANY PERSON, CORPORATION OR OTHER FIRM RECEIVING IT IS DEEMED, BY RECEIVING IT, TO AGREE THAT IT, AND/OR ANY PART OF IT, SHALL NOT BE DISCLOSED TO ANY PERSON, CORPORATION OR OTHER ENTITY, DUPLICATED, AND/OR USED, EXCEPT AS EXPRESSLY APPROVED IN WRITING IN ADVANCE BY OWNER. THIS DOCUMENT SHALL BE RETURNED TO OWNER UPON REQUEST. IT MAY BE SUBJECT TO CERTAIN RESTRICTIONS UNDER APPLICABLE EXPORT CONTROL LAWS AND REGULATIONS. | | | | XXX | ±0.005 | [±0.127] | | REFERENCE | | PROCESS/FINISH | |
| | | | | XXXX | ±0.0005 | [±0.0127] | | THIRD ANGLE PROJECTION | | SIZE [DRAWING NUMBER] | |
| | | | | REMOVE BURRS & BREAK SHARP EDGES: .003/.015 [0.076/.381] X 45° | | | | D | | 70625666 | |
| | | | | CORNER FILLETS: R.02 [51] | | | | | | SHEET 2 OF 2 | |
| | | | | MACHINED SURFACES: 125 / INCR / m/v | | | | | | 1 | |
| | | | | mm SHOWN IN [BRACKETS] | | | | | | | |