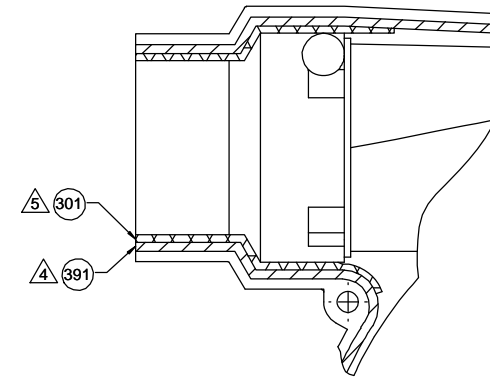
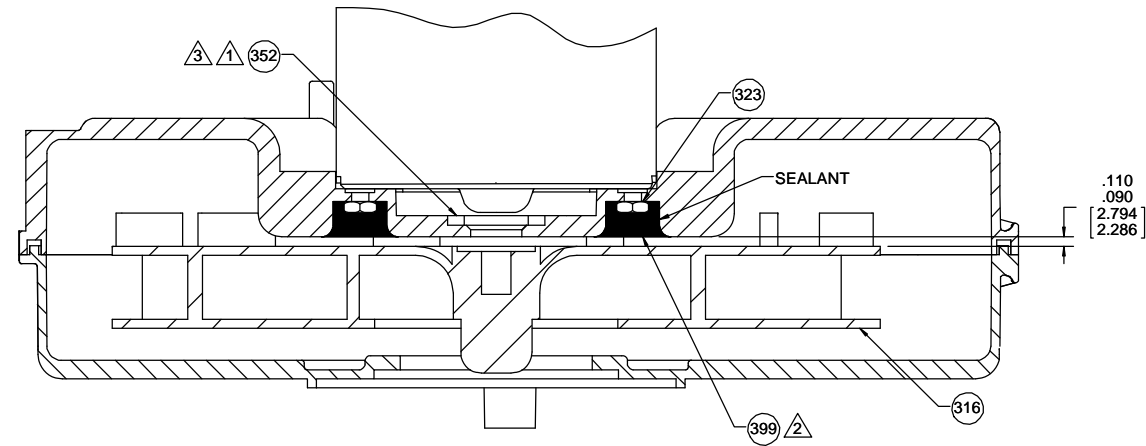


NOTES:

1. SHAFT SEAL MUST BE LOCATED ON SHAFT AS SHOWN BELOW.
2. BEFORE ASSEMBLING IMPELLER TO SHAFT, PRESS PC 399 ROPE SEALANT AGAINST EXPOSED FACE OF NUTS TO PROTECT FROM CORROSIVES.
3. WHEN EQUIPPED WITH WATER SEAL, EVERY 40TH BLOWER IS TO BE CHECKED FOR WATER LEAKAGE. IF LEAKERS ARE DISCOVERED CONTACT ENGINEERING. (USE 1/3 PARTS MR. BUBBLE WITH 2/3 PARTS WATER FOR LEAK TEST.)
4. LAY PC 391 ROPE SEALANT IN CHANNEL PROVIDED IN MOUNTING SHELL.
5. APPLY PC 301 RTV SEALANT TO SHADED AREA OF MOUNTING SHELL AS SHOWN BEFORE ASSEMBLY OF CLIPS. ASSEMBLE INLET SHELL TO MOUNTING SHELL ASSEMBLY AND SECURE WITH (8) PC 303 CLIPS.
6. TRIM EXCESS ROPE SEALANT FROM FACE OF BLOWER EXHAUST.
7. STUFF PAPER TO SECURE HOUSING.
8. CHECK EVERY BLOWER FOR STATIC VACUUM.
9. TEST WITH 1 1/4 IN. INLET RESTRICTOR.



DRAWING REVISION		REVISION BY	DATE	TOLERANCES UNLESS OTHERWISE SPECIFIED:		DRAWN BY		FDP		REGAL BELLOIT AMERICA, INC.	
ECO-0152954		MB	9/27/2018	DEC.	INCH	mm	ANGLE	DATE		5/15/2018	
ECO DESCRIPTION		APPROVED BY	DATE	.X	±0.1	[±0.25]	±0.5°	APPROVED BY		DESCRIPTION	
REVISED PACKING INSTRUCTIONS		MLS	9/27/2018	.XX	±0.01	[±0.25]		DATE		OUTLINE	
<small> PROPRIETARY AND CONFIDENTIAL INFORMATION - THIS DOCUMENT IS THE PROPERTY OF REGAL BELLOIT AMERICA, INC. COMPANY AND CONTAINS OWNERS PROPRIETARY INFORMATION. ANY PERSON, CORPORATION OR OTHER FIRM RECEIVING IT IS DEEMED, BY RECEIVING IT, TO AGREE THAT IT, AND/OR ANY PART OF IT, SHALL NOT BE DISCLOSED TO ANY PERSON, CORPORATION OR OTHER ENTITY, DUPLICATED, AND/OR USED, EXCEPT AS EXPRESSLY APPROVED IN WRITING IN ADVANCE BY OWNER. THIS DOCUMENT SHALL BE RETURNED TO OWNER UPON REQUEST. IT MAY BE SUBJECT TO CERTAIN RESTRICTIONS UNDER APPLICABLE EXPORT CONTROL LAWS AND REGULATIONS. </small>				XXX	±0.005	[±0.127]		DATE		BLOWER ASSY	
				XXXX	±0.0005	[±0.0127]		DATE		MATERIAL	
				REMOVE BURRS & BREAK SHARP EDGES: .003/.015 [0.076/.381] X 45°				DATE		PROCESS/FINISH	
				CORNER FILLETS: R.02 [51]				DATE			
				MACHINED SURFACES: 125/ INCR/ 32/ mm SHOWN IN [BRACKETS]				REFERENCE			
								THIRD ANGLE PROJECTION		SIZE	
								DRAWING NUMBER		SHEET	
								702111620		2 OF 2	