

- NOTES:
- LAY PC 391 (ROPE SEALANT) IN CHANNEL PROVIDED IN MOUNTING SHELL.
 - APPLY PC 301 RTV SEALANT TO SHADED AREA OF MOUNTING SHELL AS SHOWN ON SECTION "B" BEFORE ASSEMBLY OF SCREWS. SEE P.S. 8883-4415.
 - ASSEMBLE INLET SHELL TO MOUNTING SHELL ASSEMBLY AND SECURE WITH (7) PC 324 SCREWS. TRIM EXCESS ROPE SEALANT FROM FACE OF BLOWER EXHAUST.
 - NO HOLES ALLOWED TO BE RUBBED THROUGH INLET SHELL.
 - PACK 1 PER CONTAINER, 36 MAX. PER PALLET, PACKING ASSY: 8785-4916, 12 CONTAINERS PER LAYER 3 LAYERS PER PALLET, P.S. 8883-4200, P.S. 8883-4408.
 - INSPECTION TEST FIXTURE REQUIRED.
 - STATIC TAP HOLES TO BE FREE OF FLASH.
 - STATIC TAP READING IS TO BE -2.1 TO -2.4 AFTER CORRECTION TO STD. AIR WITH 1 5/16 INLET RESTRICTOR.
 - CAPACITOR: 4 MFD, 370VAC
 - CARTON LABELS MUST ALL FACE ONE DIRECTION TOWARD THE OPEN END OF THE PALLET. SEE P.S. 8883 4408.
 - NO PACKAGING TAPE OVER CARTON LABEL.

APPLICATION HIGH EFFICIENCY BLOWER

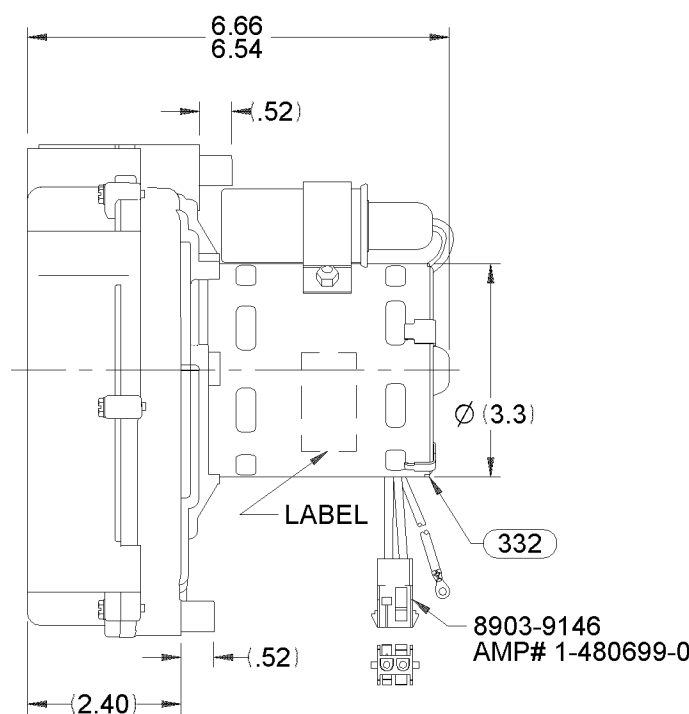
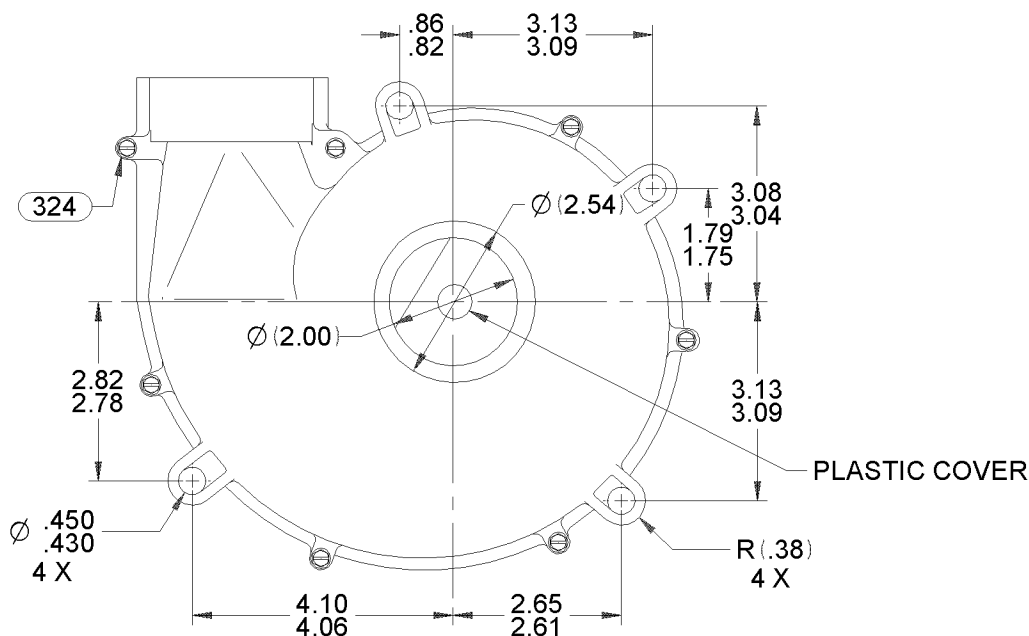
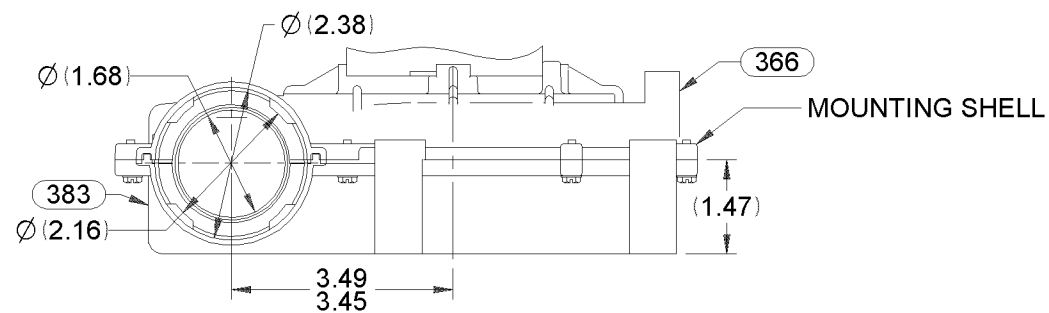
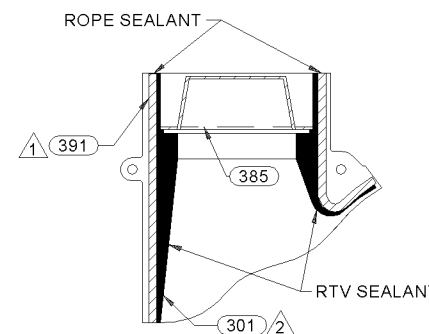
B	LA	FR	A	S	C	E	B	A
PB	62	30	V	03	CN	5	0	0
CUSTOMER								FASCO DIST
CUSTOMER PART NO.								A165

THERMALLY PROTECTED
CLASS "B" INSULATION
416 S.S. SHAFTING
SEALED BALL BEARING

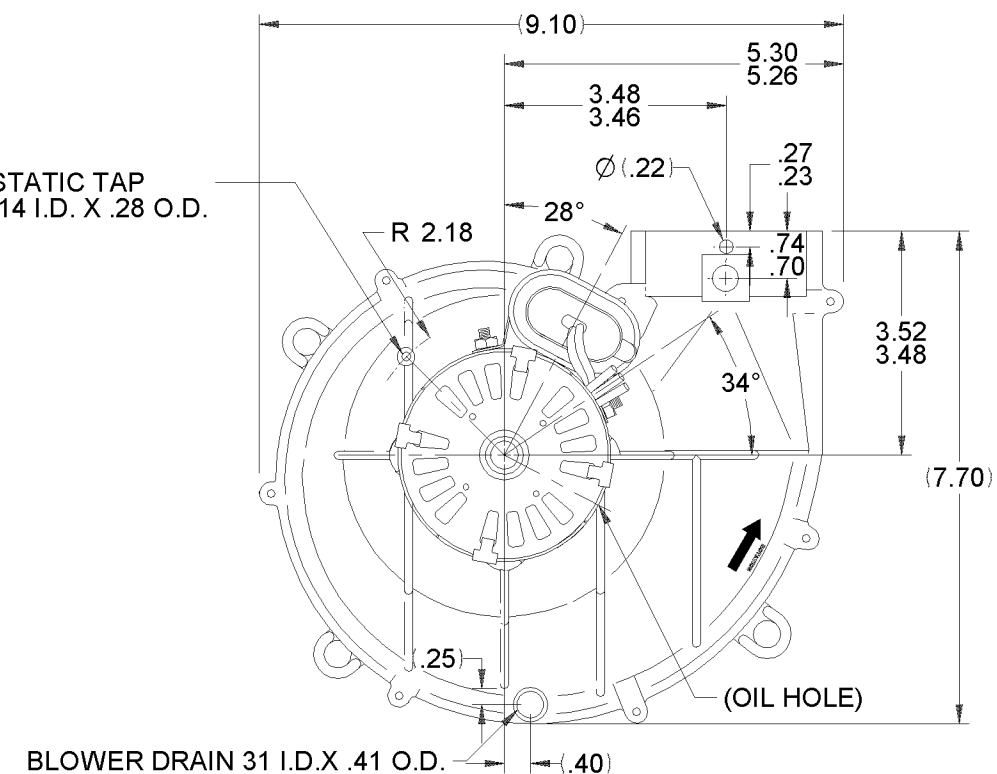
LEAD MATERIAL
18 GA. 125° C 4/64 INS.
EPDM, (2) BLACK
9.00/7.00 IN. LONG
(2) PIN TERMS. 8903-9166
AMP# 350538-1

GROUND LEAD
18 GA. 125°C 2/64 INS.
X-LINKED POLY. GRN/YEL
12.00/10.00 IN. LONG
W/RING TERM. 8903-9251
AMP #60700-2

CAPACITOR LEADS
18 GA. 125°C 2/64 INS.
X-LINKED POLY, BROWN



STATIC TAP
.14 I.D. X .28 O.D.



Connection Diagram

- Blk — Line
- Blk — Line
- Brn —
- Brn —
- Grn/Yel — Grd

AVERAGE PERFORMANCE TEST DATA
WITH 1 5/16 INLET RESTRICTOR

AT 115 VOLTS 60 HZ.

ECO. NO.	REV.	DATE	APPROVAL	R.P.M.	WATTS	AMPS
4002539	12	7/1/11	MLM/KSA	3438	80	.72
				BLOWER WEIGHT 4.5 LBS.	END PLAY XX/XX	

UNLESS OTHERWISE SPECIFIED DIMENSIONS ARE
IN INCHES TOLERANCES ARE:
FRACTIONS ± 1/16 DECIMALS .XX ± .01 ANGLES ± 1°
XXX ± .005

APPROVALS	DATE
DRAWN JMH	12/06/2002
CHECKED VLL	12/06/2002
FINISH COLOR FLAT BLACK	

FASCO FASCO MOTORS GROUP
AC MOTOR/BLOWER DIVISION

CONFIDENTIAL: DO NOT DUPLICATE OR DISCLOSE TO THIRD PARTIES WITHOUT WRITTEN PERMISSION OF FASCO MOTORS GROUP, AC MOTOR/BLOWER DIVISION.

TITLE BLOWER ASSEMBLY	
SIZE B	DWG. NO. 7062 5185
DO NOT SCALE DRAWING	SHEET 1 OF 2
REV. 12	