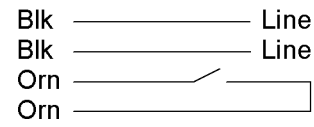


NOTES:

1. LEAD LENGTH MEASURED TO END OF TERMINAL HOUSING.
2. NO STA-LOCK REQUIRED ON IMPELLER.
3. INSPECTION TEST FIXTURE IS REQUIRED.
4. SWITCH MUST MAKE CONTACT BEFORE 1800-2500 R.P.M. AS SPEED INCREASES AND "BREAK" 50-500 BELOW ACTUAL MAKE.
5. SWITCH MECHANISM MUST GIVE QUIET OPERATION ABOVE 2500 R.P.M.
6. PACK 1 PER CONTAINER, 27 MAX. PER PALLET, PACKING ASSY 8785-4925, 9 CONTAINERS PER LAYER, 3 LAYERS PER PALLET, P.S. 8883-4200 AND P.S. 8883-4408.
7. CARTON LABELS MUST ALL FACE ONE DIRECTION TOWARD THE OPEN END OF THE PALLET. SEE P.S. 8883 4408.
8. NO PACKAGING TAPE ON CARTON LABEL.

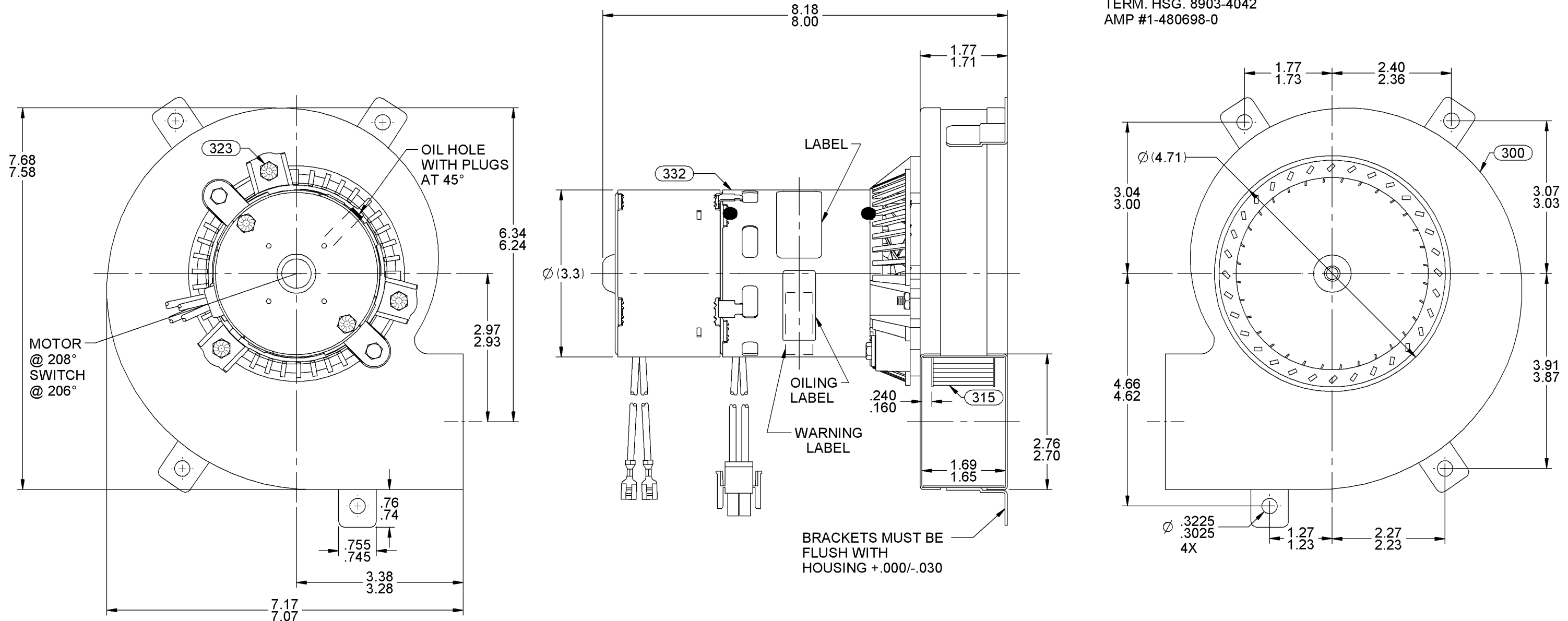
Connection Diagram



APPLICATION	FURNACE								
	B	LA	FR	A	S	C	E	B	A
	12	21	34	V	04	DN	5	3	0
CUSTOMER	FASCO DIST.								
CUSTOMER PART NO.	A144								

LEAD MATERIAL
 18 GA. 125°C 4/64 INSUL.
 EPDM. (2) BLACK
 35.00/33.00 IN. LONG
 W/SOCKET TERM. 8903-6006
 AMP #350537-1
 TERM. HSG. 8903-4042
 AMP #1-480698-0

SWITCH LEADS
 18 GA. 105°C 4/64 INSUL.
 THERMO. (2) ORANGE
 30.00/28.00 IN. LONG
 W/FSPADE TERM. 8903-9169
 AMP #42692-2



TYPICAL PERFORMANCE TEST DATA WITH 1 5/16" INLET RESTRICTOR

AT	230	VOLTS	60	HZ.
	R.P.M.	WATTS	AMPS	
	3285	60	.43	

UNLESS OTHERWISE SPECIFIED DIMENSIONS ARE IN INCHES TOLERANCES ARE:
 FRACTIONS ± 1/16
 DECIMALS XX ± .01
 ANGLES XXX ± .005

FASCO FASCO MOTORS GROUP
 AC MOTOR/BLOWER DIVISION

ECO. NO.	REV.	DATE	APPROVAL
4000439	16	12/07/10	MLM/RPT
4000889	17	1/24/11	MLM/KSA
4009197	18	5/13/2013	KSA/NJP

APPROVALS	DATE
DRAWN SDM	05/27/2004
CHECKED JMH	05/27/2004
FINISH COLOR FLAT BLACK	

CONFIDENTIAL: DO NOT DUPLICATE OR DISCLOSE TO THIRD PARTIES WITHOUT WRITTEN PERMISSION OF FASCO MOTORS GROUP, AC MOTOR/BLOWER DIVISION.

TITLE: **BLOWER ASSEMBLY**

SIZE **B** DWG. NO. 7021 9415 REV. 18

DO NOT SCALE DRAWING SHEET 1 OF 1