

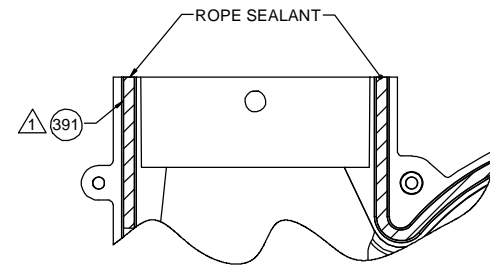
NOTES:

- LAY PC 391 (ROPE SEALANT) IN CHANNEL PROVIDED IN MOUNTING SHELL. ASSEMBLE INLET SHELL TO MOUNTING SHELL ASSEMBLY AND SECURE WITH (7) PC 324 (SCREWS). TRIM EXCESS ROPE SEALANT FROM FACE OF BLOWER EXHAUST.
- PACK 1 PER CONTAINER, 9 CONTAINERS PER LAYER, 4 LAYERS PER PALLET, 36 MAX. PER PALLET, PACKING ASSY. 87854866, PER 88834200 AND 88834408.
- STATIC TAP HOLE TO BE FREE OF FLASH.
- BLOWER TO BE UNIT BALANCED BEFORE INLET SHELL IS ASSEMBLED TO A SPEC OF 1.0 MIL. PEAK TO PEAK OR BELOW IN LOCATION MARKED X & Y.
- INSPECTION TEST FIXTURING IS REQUIRED.
- STATIC PRESSURE READING TO BE -2.15 TO -2.42 CORRECTED TO STANDARD AIR (0.075 LB/FT³).
- MUST USE STAINLESS STEEL STUDS AND NUTS (CUST. REQUEST).
- MUST HAVE NOTCHED SWIRLATOR.
- CARTON LABELS MUST ALL FACE ONE DIRECTION TOWARD THE OPEN END OF THE PALLET. SEE 88834408.
- NO PACKING TAPE OVER CARTON LABEL.

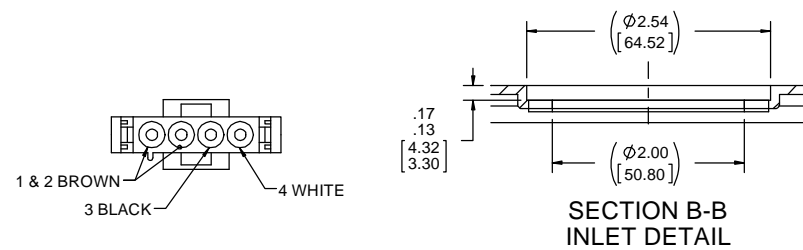
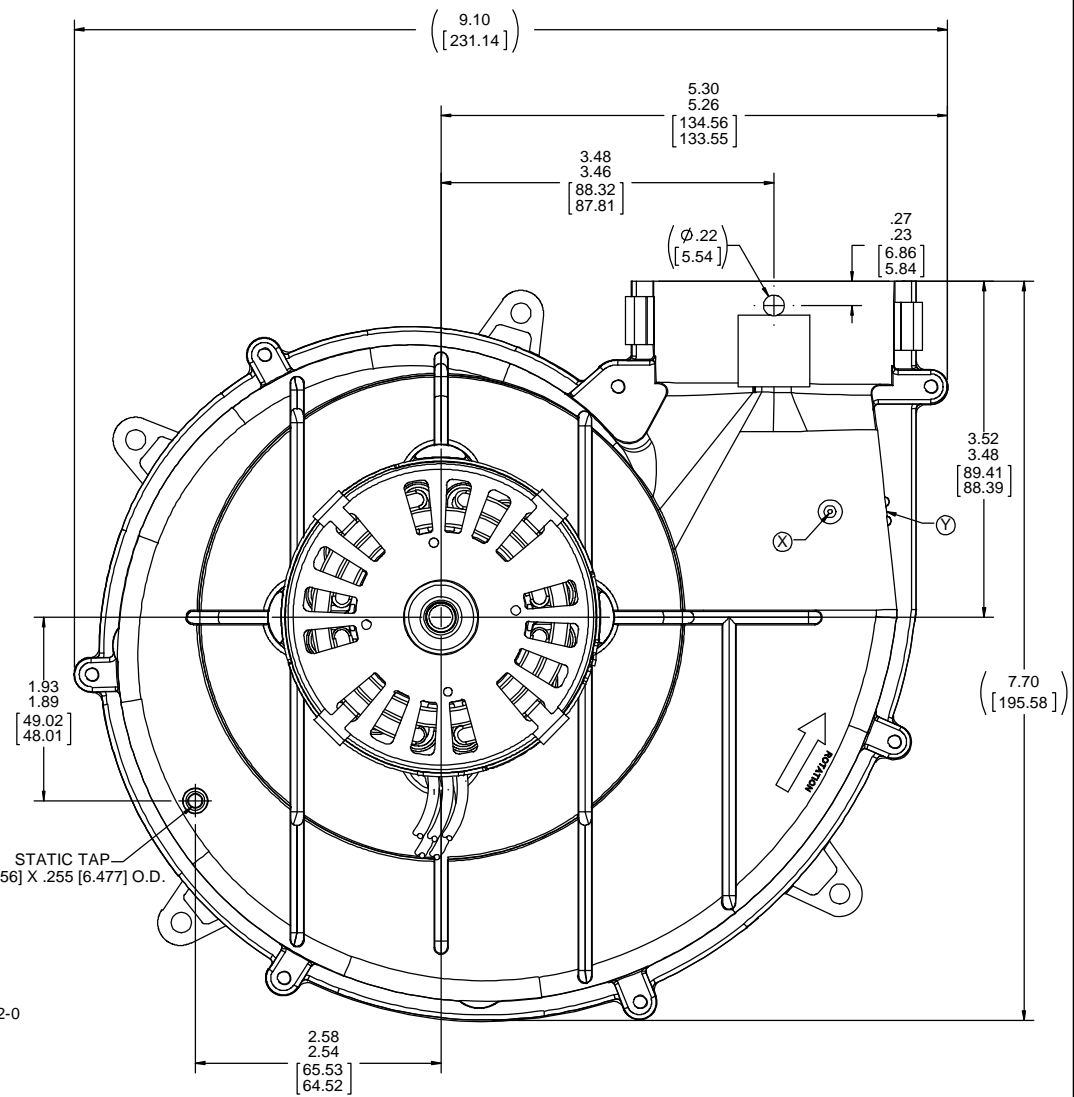
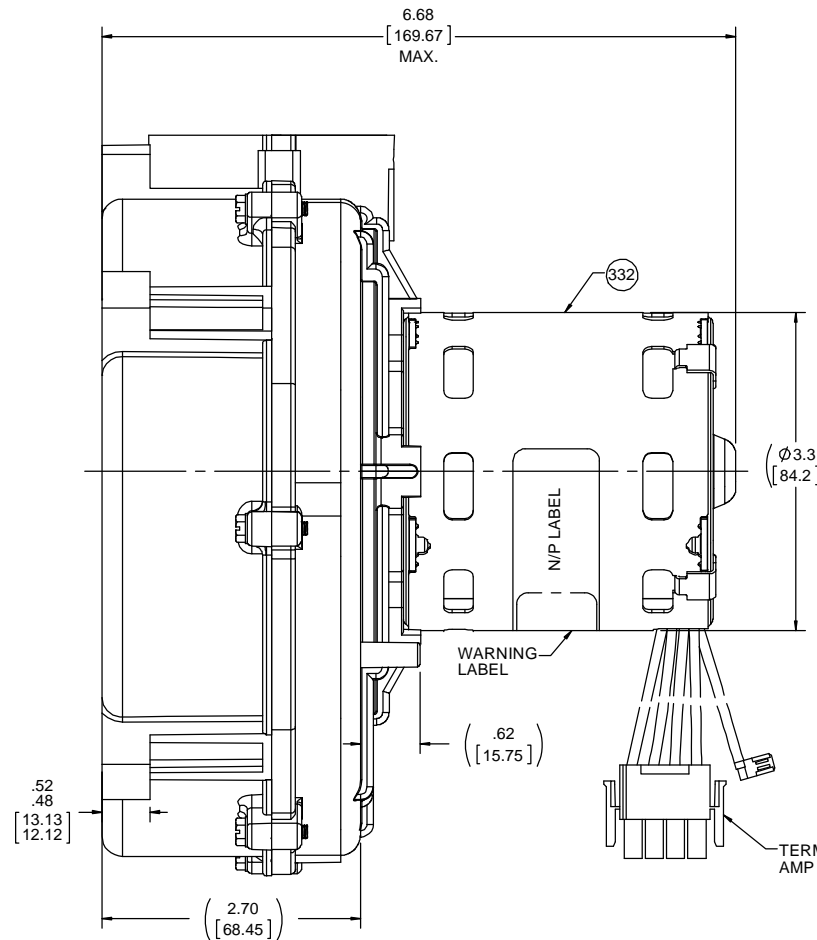
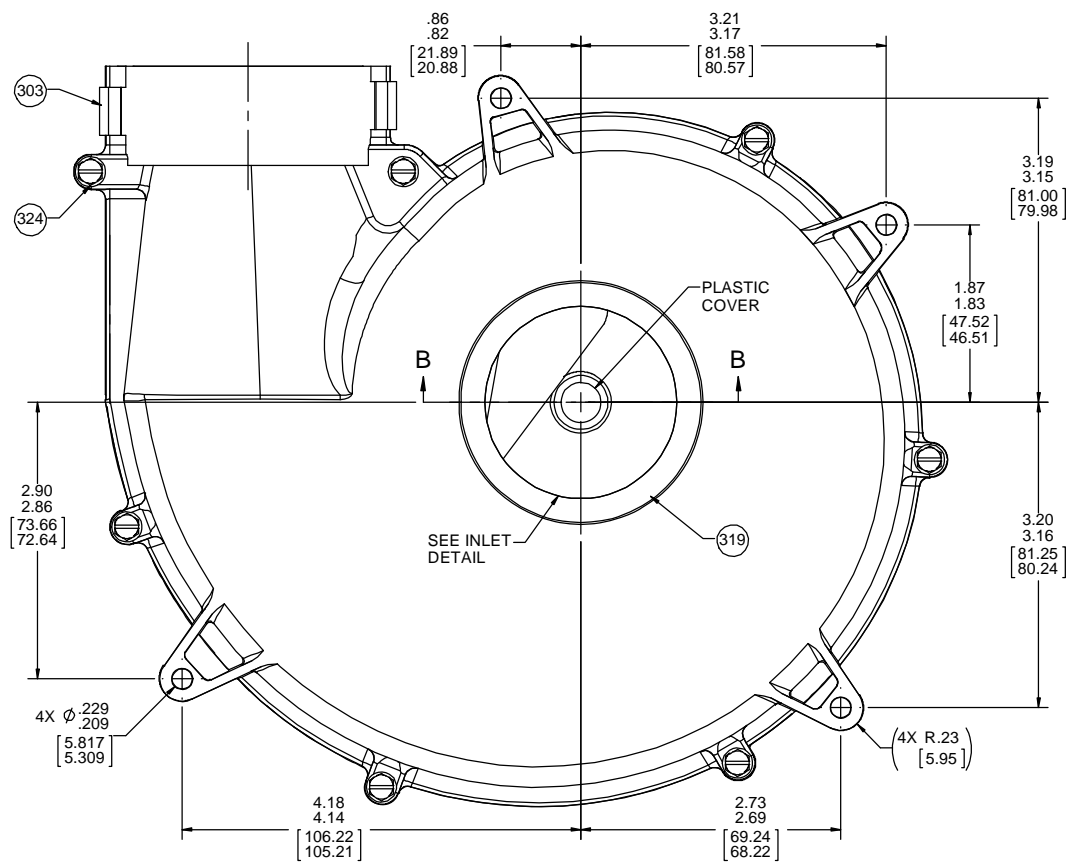
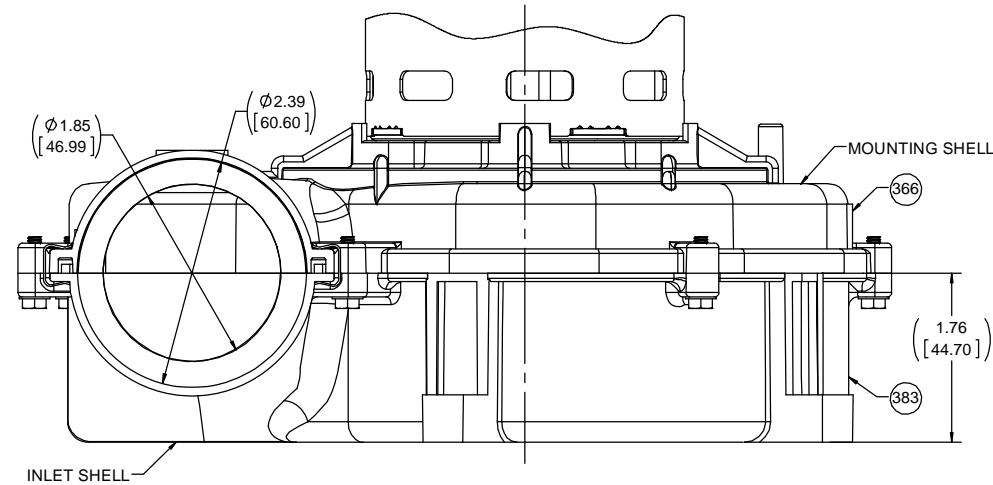
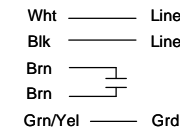
THERMALLY PROTECTED CLASS "B" INSULATION
416 SS SHAFT SEALED BALL BEARING

APPLICATION:	HIGH EFFICIENCY BLOWER	B	LA	FR	A	S	C	E	B	A
CUSTOMER:	FASCO DIST.	PB	62	30	V	03	CN	5	0	C
CUSTOMER PN:	A136									

LEAD MATERIAL
18 GA. 125°C 2/64 INSUL.
X-LINKED POLY. (1) BLACK
AND (1) WHITE
11.00/9.00 [279.40/228.60]
W/PIN TERMS.
AMP 350218-1
CAPACITOR LEADS
(2) BROWN
11.00/9.00 [279.40/228.60]
W/PIN TERMS.
AMP 350218-1
GROUND LEAD
GRNYEL
16.00/14.00 [406.40/355.60]
W/FLAG TERM.
AMP 42742-2



Connection Diagram



TYPICAL PERFORMANCE TEST DATA WITH 1.25 INLET RESTRICTOR		
AT 115 VOLTS 60 Hz		
RPM	WATTS	AMPS
3373	90	.82
BLOWER WEIGHT 4.25 LBS.		ENDPLAY .XX/XX

DRAWING REVISION AC	REVISION BY MLS	DATE 5/16/2018	TOLERANCES UNLESS OTHERWISE SPECIFIED: DEC. INCH .01 XX .001 [0.025] XXX ±0.005 [0.127] XXXX ±0.0005 [0.0127]	DRAWN BY MLS	DATE 11/17/2015	APPROVED BY BGP	DATE 11/17/2015	DESCRIPTION OUTLINE BLOWER ASSY
ECO-0144255	APPROVED BY BAA	DATE 5/16/2018	REMOVE BURRS & BREAK SHARP EDGES: .003/.015 [0.076/.381] X 45° CORNER FILLETS: R.02 [0.51] MACHINED SURFACES: 125 INCR/MLV mm SHOWN IN [BRACKETS]	APPROVED BY BGP	DATE 11/17/2015	DATE 11/17/2015	DATE 11/17/2015	DESCRIPTION OUTLINE BLOWER ASSY
BLOWER WEIGHT 4.25 LBS.			ENDPLAY .XX/XX	APPROVED BY BGP	DATE 11/17/2015	DATE 11/17/2015	DATE 11/17/2015	DESCRIPTION OUTLINE BLOWER ASSY
BLOWER WEIGHT 4.25 LBS.			ENDPLAY .XX/XX	APPROVED BY BGP	DATE 11/17/2015	DATE 11/17/2015	DATE 11/17/2015	DESCRIPTION OUTLINE BLOWER ASSY

Regal Beloit America, Inc.

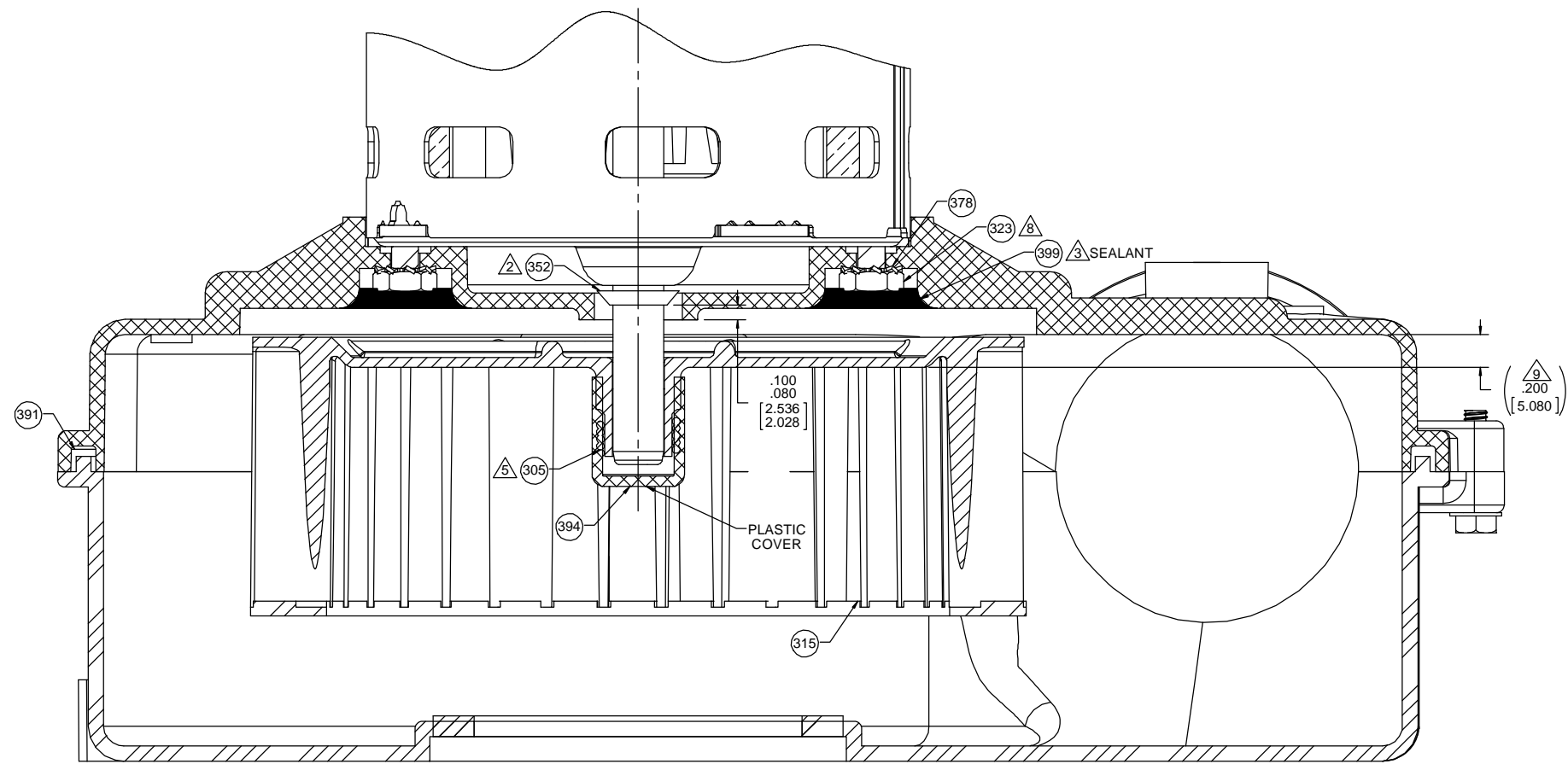
OUTLINE BLOWER ASSY

70624239

1 OF 2

NOTES:

1. LINE UP HOUSING HALVES WITH (3) PILOTS, SECURE WITH (7) PC 324 SCREWS. TORQUE SCREWS TO 7 IN./LBS. MAX. NO AIR GAPS ALLOWED BETWEEN HOUSING HALVES. NOTE: PLASTIC STRIPS AT TORQUE SETTINGS ABOVE 7 IN. LBS.
2. OIL SLINGER MUST BE LOCATED ON SHAFT AS SHOWN BELOW.
3. BEFORE ASSEMBLING IMPELLER TO SHAFT, PRESS PC 399 ROPE SEALANT AGAINST EXPOSED FACE OF NUTS TO PROTECT FROM CORROSIVES.
4. WHEN EQUIPPED WITH WATER SEAL, EVERY 20TH BLOWER IS TO BE CHECKED FOR WATER LEAKAGE. IF LEAKERS ARE DISCOVERED CONTACT ENGINEERING. (USE 1/3 PARTS MR. BUBBLE WITH 2/3 PARTS WATER FOR LEAK TEST).
5. BEFORE ASSEMBLY OF PC 394 END CAP, ASSEMBLE TORSION SPRING TO IMPELLER. PRESS IMPELLER ASSY. ON SHAFT AND LOCATE AS SHOWN BELOW.
6. ALL UNITS MUST BE TESTED WHERE EQUIPPED WITH STATIC TAP, FOR STATIC VACUUM TO THE STANDARDS LISTED ON BLOWER TOP COPY.
7. VACUUM TO BE CHECKED WITH 1.25 I.D. INLET RESTRICTOR.
8. NUT MUST BE STAINLESS STEEL.
9. ADJUST AS NECESSARY TO MEET PERFORMANCE REQUIREMENTS.



SECTION D-D

DRAWING REVISION		REVISION BY	MLS	DATE	5/16/2018	TOLERANCES UNLESS OTHERWISE SPECIFIED:		DRAWN BY		MLS	DATE		11/17/2015	DESCRIPTION		OUTLINE		
ECO-0144255		APPROVED BY	BAA	DATE	5/16/2018	DEC.	INCH	mm	ANGLE		DATE	11/17/2015	BLOWER ASSY		MATERIAL		PROCESS/FINISH	
ECO DESCRIPTION		UPDATED BLOWER PACKING				.X	±0.1	[±2.5]	±1°		APPROVED BY	BGP	REFERENCE		SIZE		DRAWING NUMBER	70624239
<small> PROPRIETARY AND CONFIDENTIAL INFORMATION - THIS DOCUMENT IS THE PROPERTY OF REGAL BELOIT AMERICA, INC. CONSENT AND CONFIRMATION OWNERS PROPRIETARY INFORMATION, ANY PERSON, CORPORATION OR OTHER FIRM RECEIVING IT IS DEEMED, BY RECEIVING IT, TO AGREE THAT IT, AND/OR ANY PART OF IT, SHALL NOT BE DISCLOSED TO ANY PERSON, CORPORATION OR OTHER ENTITY, DUPLICATED, AND/OR USED, EXCEPT AS EXPRESSLY APPROVED IN WRITING IN ADVANCE BY OWNER. THIS DOCUMENT SHALL BE RETURNED TO OWNER UPON REQUEST. IT MAY BE SUBJECT TO CERTAIN RESTRICTIONS UNDER APPLICABLE EXPORT CONTROL LAWS AND REGULATIONS. </small>		<small> REMOVE BURRS & BREAK SHARP EDGES: .003/.015 [.076/.381] X 45° CORNER FILLETS: R.02 [.51] MACHINED SURFACES: 125 INCR/ MIL/ mm SHOWN IN [BRACKETS] </small>		<small> THIRD ANGLE PROJECTION </small>		<small> SHEET 2 OF 2 </small>												