

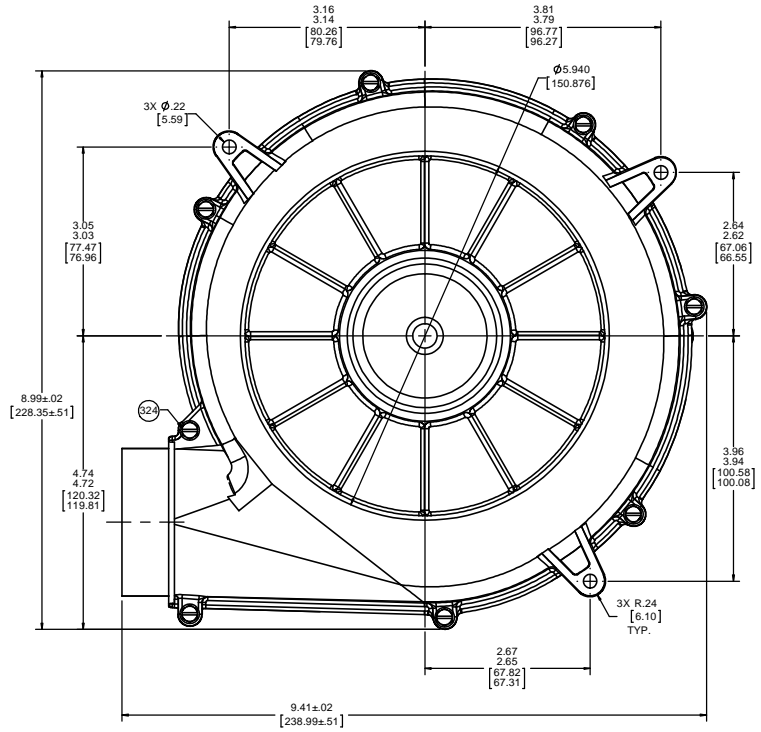
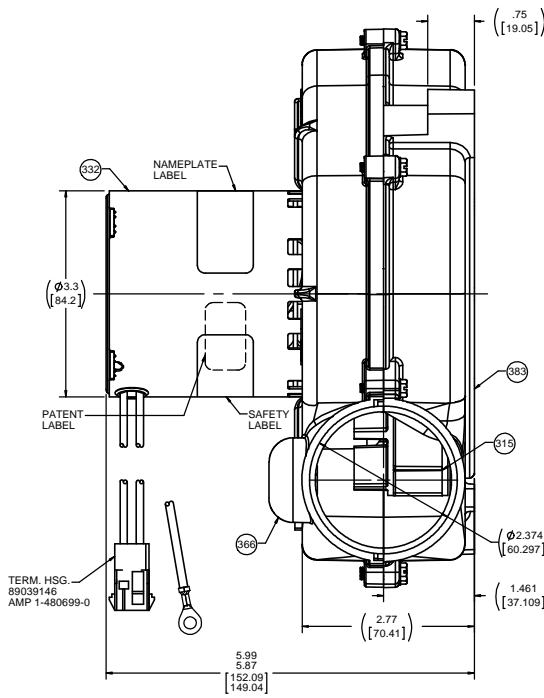
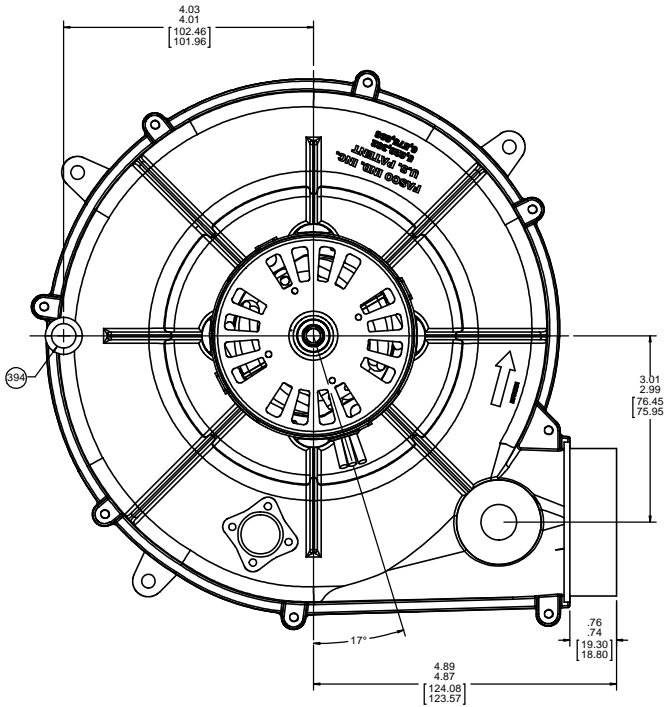
ORACLE PART REV. 006

- NOTES:
- INSPECTION TEST FIXTURING IS REQUIRED.
 - PACK 1 PER CONTAINER, 12 CONTAINERS PER LAYER, 3 LAYERS PER PALLET, 36 MAX. PER PALLET, PACKING ASSY. 87854916, PER 88834200.
 - CARTON LABELS MUST ALL FACE ONE DIRECTION TOWARD THE OPEN END OF THE PALLET.
 - NO PACKING TAPE OVER CARTON LABEL.

THERMALLY PROTECTED CLASS "B" INSULATION
416 SS SHAFT
SEALED BALL BEARING

APPLICATION:	GAS FURNACE	B	LA	FR	A	S	C	E	B	A
CUSTOMER:	FASCO DIST.	PF	21	30	F	06	FR	5	0	0
CUSTOMER PN:	A122	BLOWER - BLACK, MOTOR - FLAT BLACK								

LEAD MATERIAL
18 GA. 125°C 2/64 INSUL.
X-LINKED POLY.
(2) BLACK
14.00/12.00 [355.60/304.80]
SOCKET TERM. 89039084
AMP 350536-1
GROUND LEAD MATERIAL
GRN/YEL
19.00/17.00 [482.60/431.80]
RING TERM. 89039009
AMP 40955



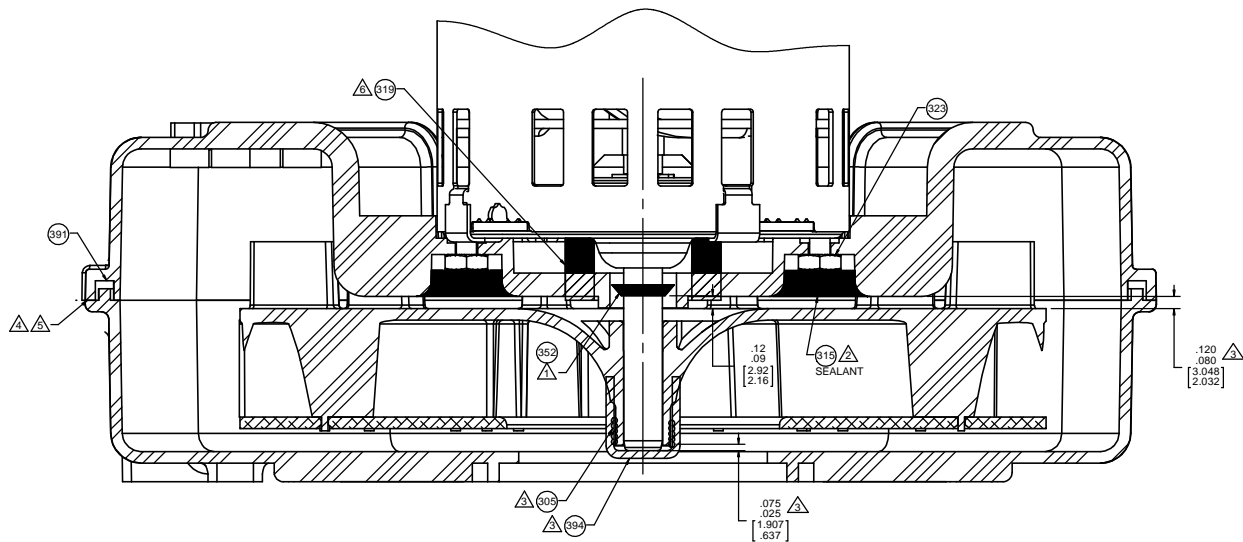
TYPICAL PERFORMANCE TEST DATA WITH A 1.25 INLET RESTRICTOR			
AT 115 VOLTS 60 Hz			
RPM	WATTS	AMPS	
3348	116	1.69	
BLOWER WEIGHT			ENDPLAY
4 1/2 LBS.			.XX/XX

DRAWING REVISION: G	DESIGNED BY: MLS	DATE: 12/10/2015	TOLERANCES UNLESS OTHERWISE SPECIFIED: DEC. ±.01 [2.54]	DRAWN BY: MLS	DATE: 12/10/2015	DESCRIPTION: BLOWER ASSY
ECO-088808	APPROVED BY: BGP	DATE: 12/10/2015	XXX ±.005 [0.127]	PROCESSOR: BGP	DATE: 12/10/2015	REGAL BELLOTT AMERICA, INC.
REDRAWN TO SOLIDWORKS			REMOVE BURRS & BREAK SHARP EDGES: .0010 [0.025] 4X	CORNER FILLETS: R.02 [0.51]		
FINISHES: MACHINED SURFACES: 12.7 [0.51] INCH [25.4] MILL			OTHER ANGLE PROJECTION: 3D			
MATERIAL: 304 SS			DRAWING NUMBER: 702111849			
SHEET 1 OF 2						

8 7 6 5 4 3 2 1

NOTES:

- ▲ OIL SLINGER MUST BE LOCATED ON SHAFT AS SHOWN BELOW.
- ▲ BEFORE ASSEMBLING IMPELLER TO SHAFT, PRESS ROPE SEALANT AGAINST EXPOSED FACE OF NUTS TO PROTECT FROM CORROSIVES.
- ▲ ASSEMBLE COMPRESSION RING TO IMPELLER. LOCATE AS SHOWN ON DRAWING. DIMENSION IS FROM THE END OF IMPELLER HUB TO THE COMPRESSION RING. PRESS IMPELLER ASSEMBLY ONTO SHAFT AND LOCATE AS SHOWN ON DRAWING. THEN ASSEMBLE END CAP OVER THE END OF SHAFT AND IMPELLER HUB.
- ▲ LINE UP HOUSING HALVES WITH THREE PILOT. SECURE WITH EIGHT SCREWS. TORQUE SCREWS TO 7 IN. LBS. MAX. NO AIR GAP ALLOWED BETWEEN HOUSING HALVES. NOTE: PLASTIC STRIPS AT TORQUE SETTINGS ABOVE 7 IN. LBS.
- ▲ WHEN EQUIPPED WITH A WATER SEAL, EVERY 20TH BLOWER IS TO BE CHECKED FOR WATER LEAKAGE. IF LEAKERS ARE DISCOVERED, CONTACT ENGINEERING. USE 1/3 PARTS MR. BUBBLE TO 2/3 PARTS WATER.
- ▲ ATTACH PC 319 GASKET TO MOTOR FACE BEFORE ASSEMBLING MOTOR TO PC 366 MOTOR SHELL.



SECTION C-C
SCALE 2 : 1

DRAWING REVISION: G	DESIGNED BY: MILS	DATE: 12/10/2015	TOLERANCES UNLESS OTHERWISE SPECIFIED: FRACTIONS: .001 (25.4) ANGLES: .1°	DRAWN BY: MILS	
ECO-088808	APPROVED BY: BGP	DATE: 12/10/2015	DEC: .001 (25.4)	DATE: 12/10/2015	Regal Beloit America, Inc.
PFD DESCRIPTION: REDRAWN TO SOLIDWORKS			XXX: .005 (127)	APPROVED BY: BGP	
PROPERTY AND CONSTRUCTION INFORMATION: THIS DOCUMENT IS THE PROPERTY OF REGAL BELOIT AMERICA, INC. IT IS TO BE USED ONLY FOR THE PURPOSES SPECIFIED HEREIN. IT IS NOT TO BE REPRODUCED OR TRANSMITTED IN ANY FORM OR BY ANY MEANS, ELECTRONIC OR MECHANICAL, INCLUDING PHOTOCOPYING, RECORDING, OR BY ANY INFORMATION STORAGE AND RETRIEVAL SYSTEM, WITHOUT PERMISSION IN WRITING FROM REGAL BELOIT AMERICA, INC. THIS DOCUMENT IS UNCLASSIFIED.			REMOVE BURRS & BREAK SHARP EDGES: .000 (0) (0.076) (1.4)	DATE: 12/10/2015	DESCRIPTION: BLOWER ASSY
MATERIAL: 304 STAINLESS STEEL			CORNER FILLETS: R.02 (0.51)	DATE: 12/10/2015	PROCESSING: DATUMS
FINISH: 32			MACHINED SURFACES: 32	DATE: 12/10/2015	PROJECTION: THIRD ANGLE
UNIT: INCH			UNIT: INCH	DATE: 12/10/2015	DIP: D
SCALE: AS SHOWN IN (BRACKETS)			SCALE: AS SHOWN IN (BRACKETS)	DATE: 12/10/2015	DRAWING NUMBER: 702111849
				DATE: 12/10/2015	SHEET: 2 OF 2

8 7 6 5 4 3 2 1