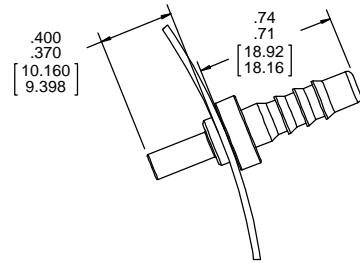


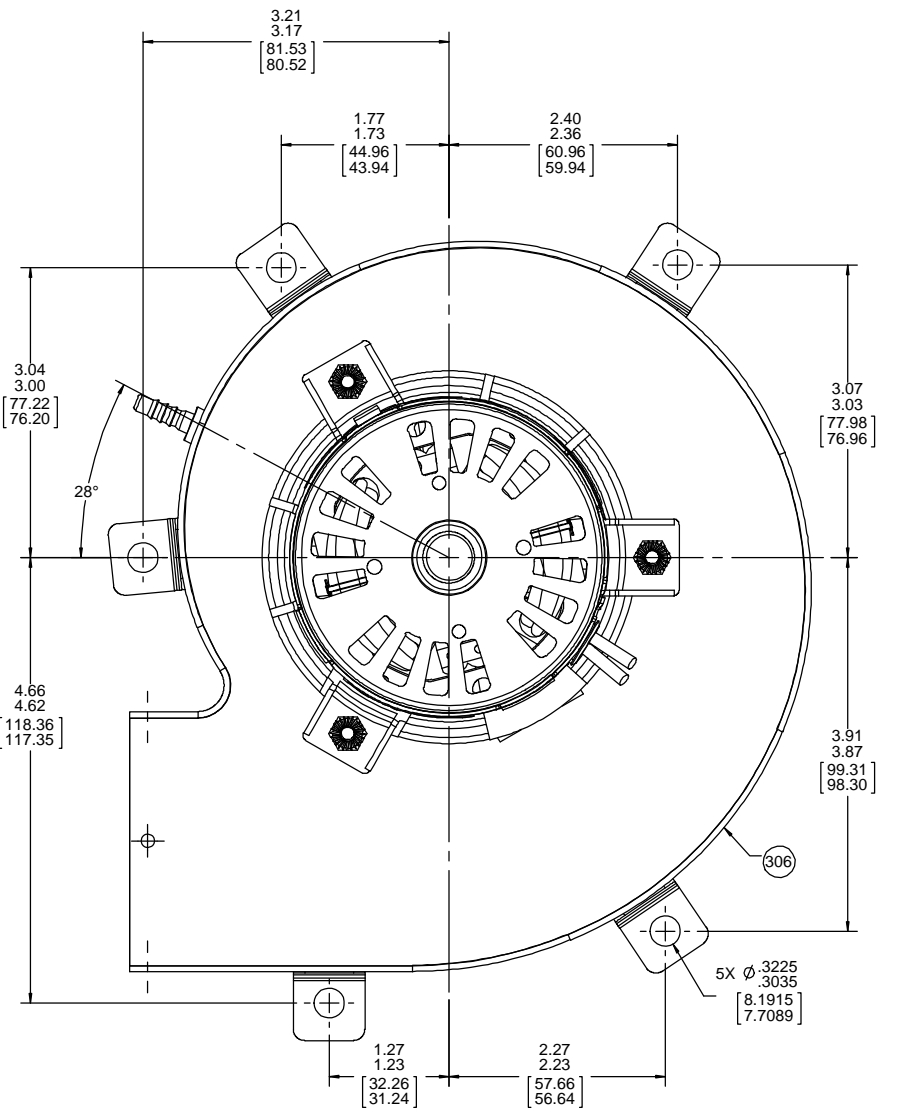
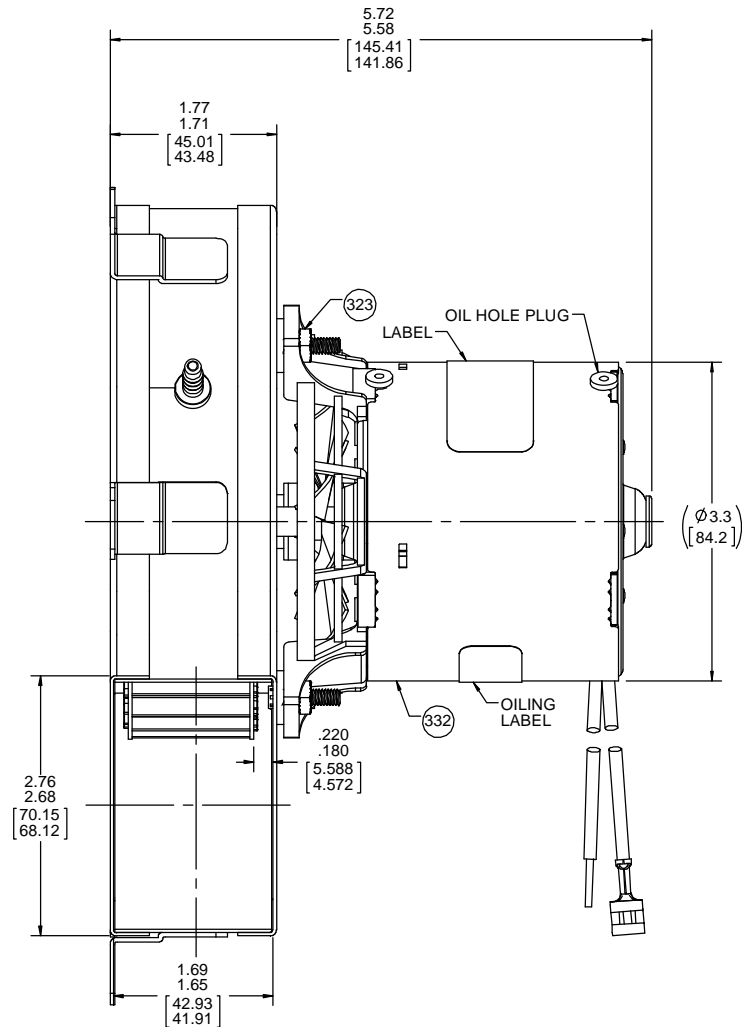
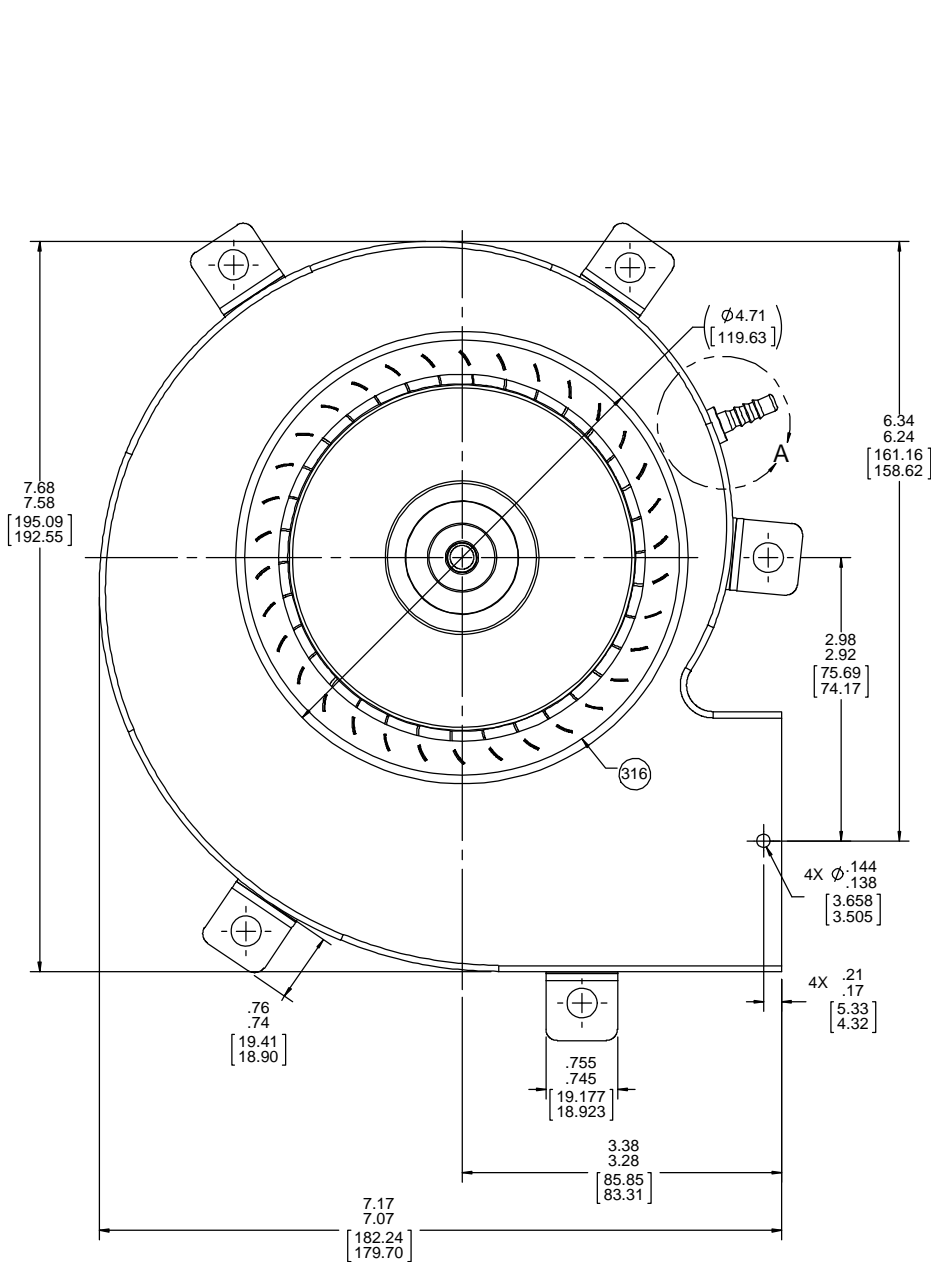
		2			1					
APPLICATION:		B	LA	FR	A	S	C	E	B	A
CUSTOMER:	FASCO DIST	12	21	47	V	02	EJ	5	3	0
CUSTOMER PN:	A079	FINISH: BLOWER - FLAT BLACK, MOTOR - FLAT BLACK								

**THERMALLY PROTECTED
CLASS "B" INSULATION
416 SS SHAFT**

LEAD MATERIAL
18 GA. 125°C, 4/64 INSUL.
EPDM
BLACK
25.00/23.00 [635.00/584.20]
(1) .56/.44 [14.22/11.18] STRIP
(1) W/FLAG TERM.
AMP 60764-2



DETAIL A



TYPICAL PERFORMANCE TEST DATA WITH 1 5/16 INLET RESTICTOR			
AT 115 VOLTS 60 Hz			
	RPM	WATTS	AMPS
	3284	69	.91
BLOWER WEIGHT 4.75 LBS.			ENDPLAY .030/.010 [.762/.254]

[illegible]