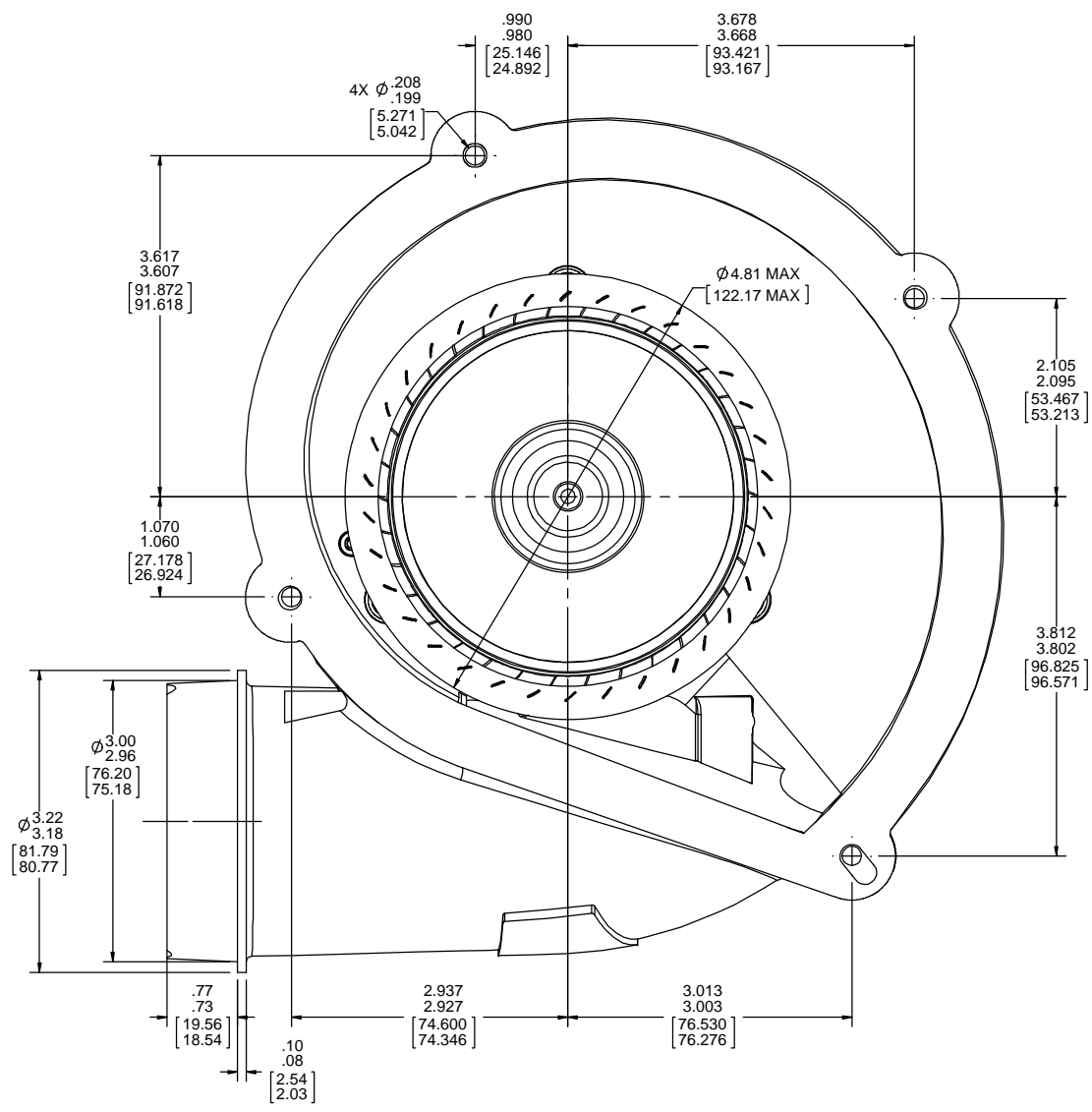
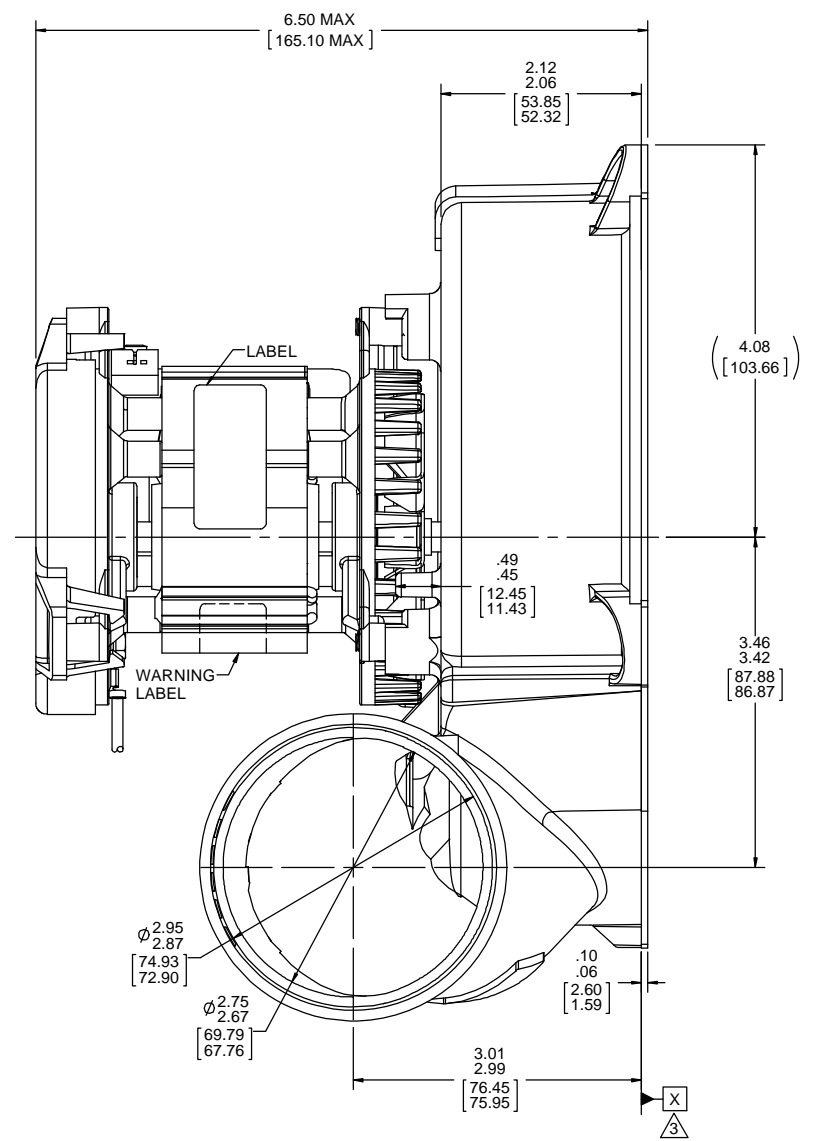
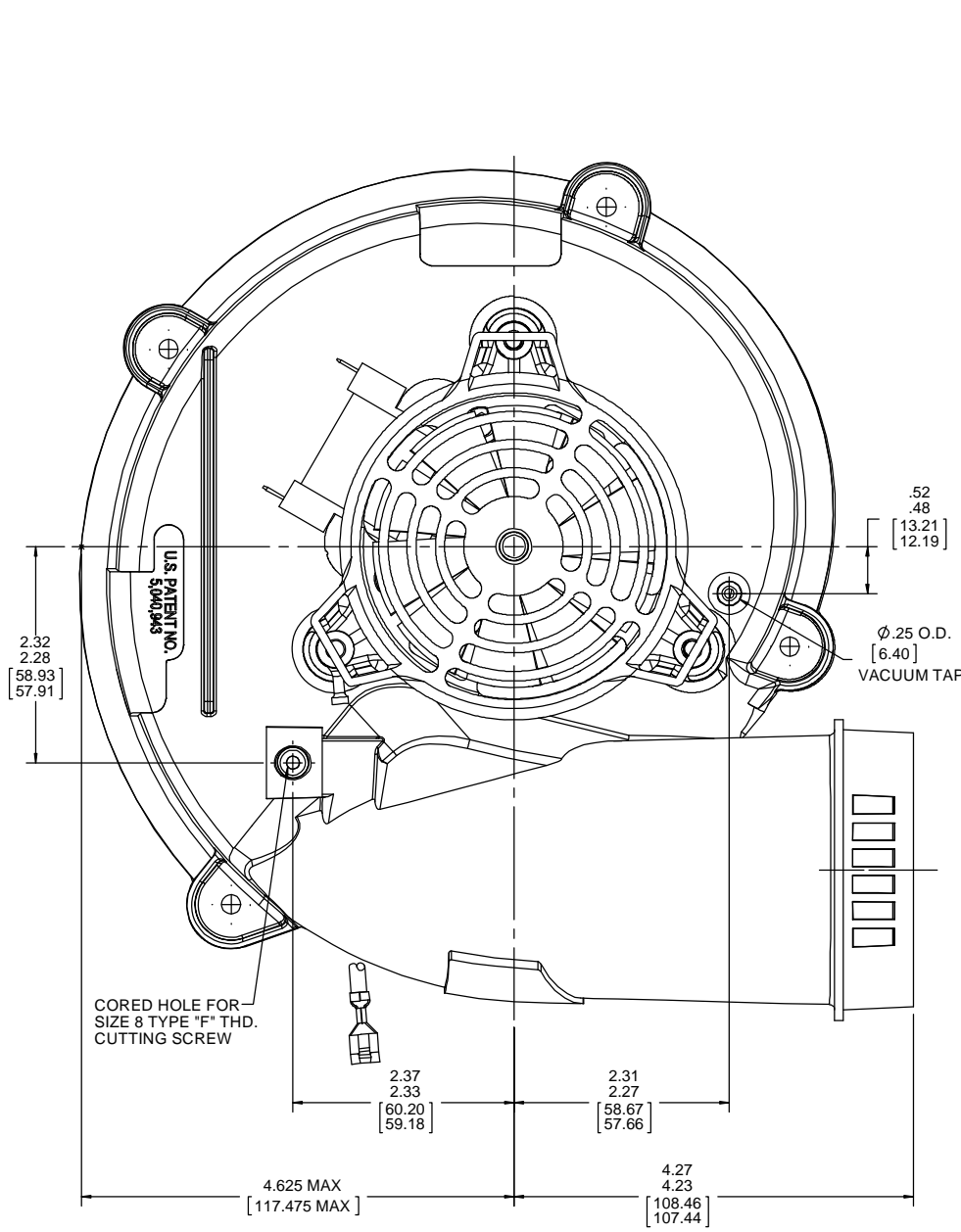


THERMALLY PROTECTED
CLASS "B" INSULATION
SEALED BALL BEARING

APPLICATION:		B	LA	FR	A	S	C	E	B	A
CUSTOMER:	FASCO DIST.	HM	58	48	X	06	OP	5	0	0
CUSTOMER PN:	A066	FINISH: BLOWER-NATURAL, MOTOR - NATURAL								

GROUND LEAD MATERIAL
18 GA. 105°C 2/64 INSUL.
THERMO.
GRN/YEL
10.00/8.00 [254.00/203.20]
W/FSPADE TERM.
AMP 41274

- NOTES:
- 7.0 SINGLE STAGE, DRAFT INDUCER WITH A Ø4.72 X 1.6 [Ø119.89 X 40.6] FORWARD CURVED IMPELLER.
 - INTAKE AND EXHAUST MUST NOT BE OBSTRUCTED BY MOUNTING.
 - A GASKET IS MOUNTED ON THIS SURFACE. DIMENSIONS SHOWN FROM DATUM "X" ARE FROM THE FLANGE ON THE HOUSING AND DO NOT INCLUDE THE GASKET THICKNESS.
 - PACK 1 PER CONTAINER, 12 CONTAINERS PER LAYER, 4 LAYERS PER PALLET 48 MAX. PER PALLET, PER 88834200 AND 88834408.
 - CARTON LABELS MUST ALL FACE ONE DIRECTION TOWARD THE OPEN END OF THE PALLET. SEE 88834408.
 - NO PACKAGING TAPE OVER CARTON LABEL.



TYPICAL PERFORMANCE TEST DATA
WITH A 1 1/8" INLET RESTRICTOR

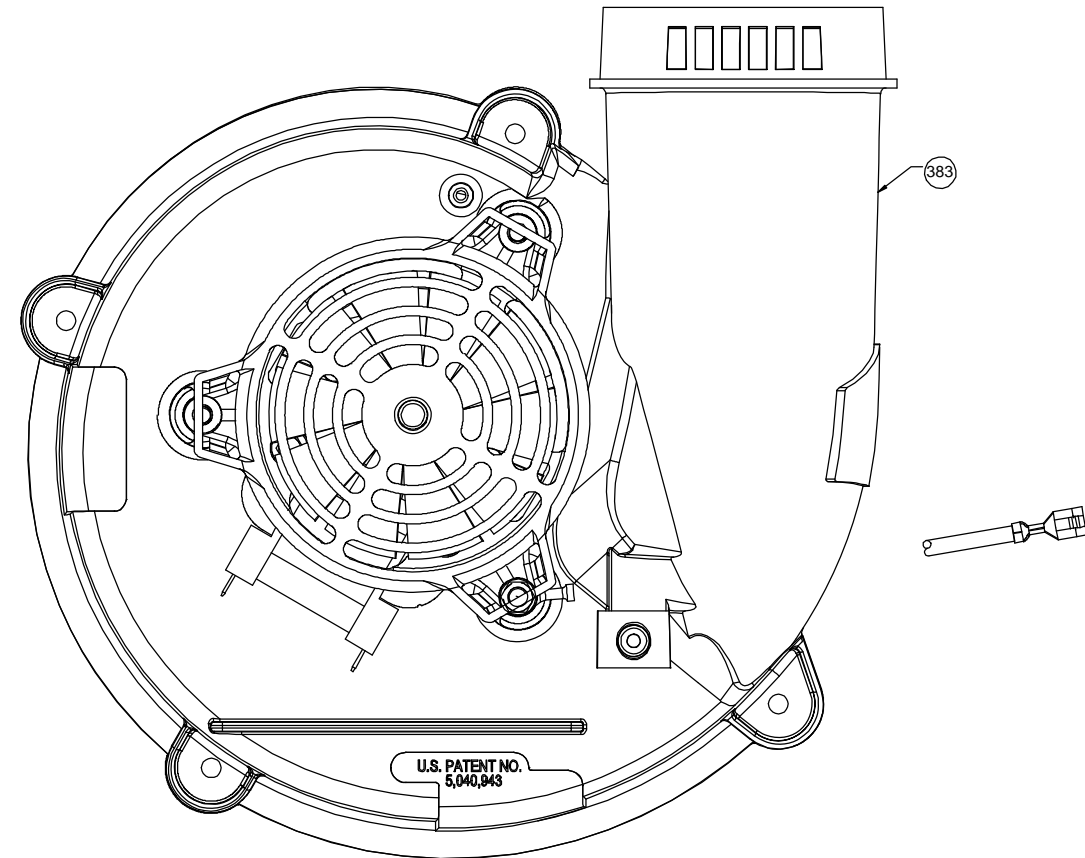
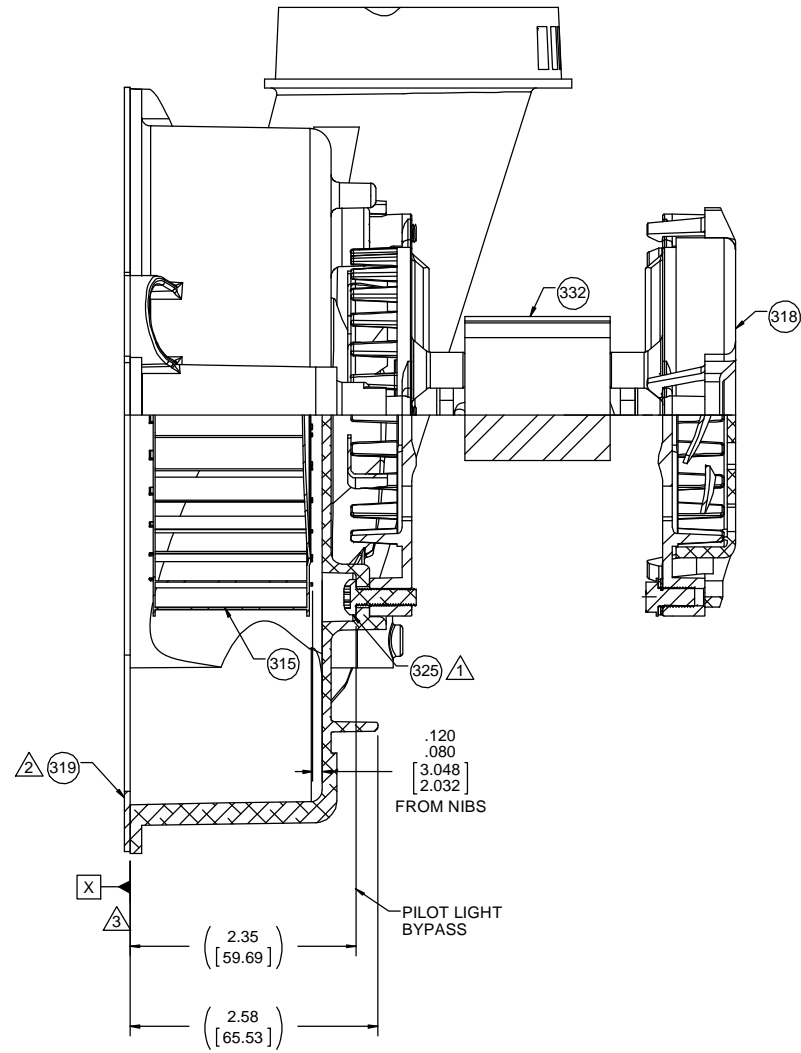
AT 120 VOLTS 60 Hz

	RPM	WATTS	AMPS
TEST PER FOT 63004457			
BLOWER WEIGHT 6 LBS.			ENDPLAY .XX/XX

DRAWING REVISION AB	REVISION BY FDP	DATE 12/7/2018	TOLERANCES UNLESS OTHERWISE SPECIFIED: DEC. INCH mm ANGLE .X ±0.1 #2.5 ±1° .XX ±0.01 #0.25 .XXX ±0.005 #0.127 XXXX ±0.0005 #0.0127	DRAWN BY MLS	DATE 5/10/2018	APPROVED BY BAA	DATE 5/10/2018	REFERENCE	THIRD ANGLE PROJECTION	SIZE D	DRAWING NUMBER 70581406	SHEET 1 OF 2
ECO-0156378	APPROVED BY MLS	DATE 12/7/2018	REMOVE BURRS & BREAK SHARP EDGES: .003/.015 [Ø76/.381] X 45° CORNER FILLETS: R.02 [S1] MACHINED SURFACES: 125/ INCR/ m/v	REGAL BELLOI AMERICA, INC.	DESCRIPTION OUTLINE BLOWER ASSY	MATERIAL	PROCESS/FINISH					

NOTES:

- 1. ATTACH PC 332 MOTOR HOUSING USING PC 325 SCREWS. TORQUE SCREWS TO 50 ± 10 IN. LBS.
- 2. ATTACH PC 319 GASKET TO HOUSING.
- 3. A GASKET IS MOUNTED ON THIS SURFACE. DIMENSIONS SHOWN FROM DATUM "X" ARE FROM THE FLANGE ON THE HOUSING AND DO NOT INCLUDE THE GASKET THICKNESS.



DRAWING REVISION AB	REVISION BY FDP	DATE 12/7/2018	TOLERANCES UNLESS OTHERWISE SPECIFIED: DEC. INCH mm ANGLE .X ±0.1 [±2.5] ±1° .XX ±0.01 [±0.25] .XXX ±0.005 [±0.127] XXXX ±0.0005 [±0.0127]	DRAWN BY MLS	DATE 5/10/2018	DESCRIPTION Regal Beloit America, Inc.
ECO-0156378	APPROVED BY MLS	DATE 12/7/2018	REMOVE BURRS & BREAK SHARP EDGES: .003/.015 [0.076/.381] X 45° CORNER FILLETS: R.02 [.51]	APPROVED BY BAA	DATE 5/10/2018	OUTLINE BLOWER ASSY
ECO DESCRIPTION UPDATED PACKING <small> COPYRIGHT REGAL BELOIT AMERICA, INC. ALL RIGHTS RESERVED. PROPRIETARY AND CONFIDENTIAL INFORMATION - THIS DOCUMENT IS THE PROPERTY OF REGAL BELOIT AMERICA, INC. COMPANY AND CONTAINS OWNERS PROPRIETARY INFORMATION. ANY PERSON, CORPORATION OR OTHER FIRM RECEIVING IT IS DEEMED, BY RECEIVING IT, TO AGREE THAT IT AND/OR ANY PART OF IT, SHALL NOT BE DISCLOSED TO ANY PERSON, CORPORATION OR OTHER ENTITY, DUPLICATED, AND/OR USED, EXCEPT AS EXPRESSLY APPROVED IN WRITING IN ADVANCE BY OWNER. THIS DOCUMENT SHALL BE RETURNED TO OWNER UPON REQUEST. IT MAY BE SUBJECT TO CERTAIN RESTRICTIONS UNDER APPLICABLE EXPORT CONTROL LAWS AND REGULATIONS. </small>			MACHINED SURFACES: 125/ INCR/ 3.2/ mm SHOWN IN [BRACKETS] m/v	REFERENCE THIRD ANGLE PROJECTION	MATERIAL PROCESS/FINISH	SIZE [DRAWING NUMBER] D 70581406
						SHEET 2 OF 2