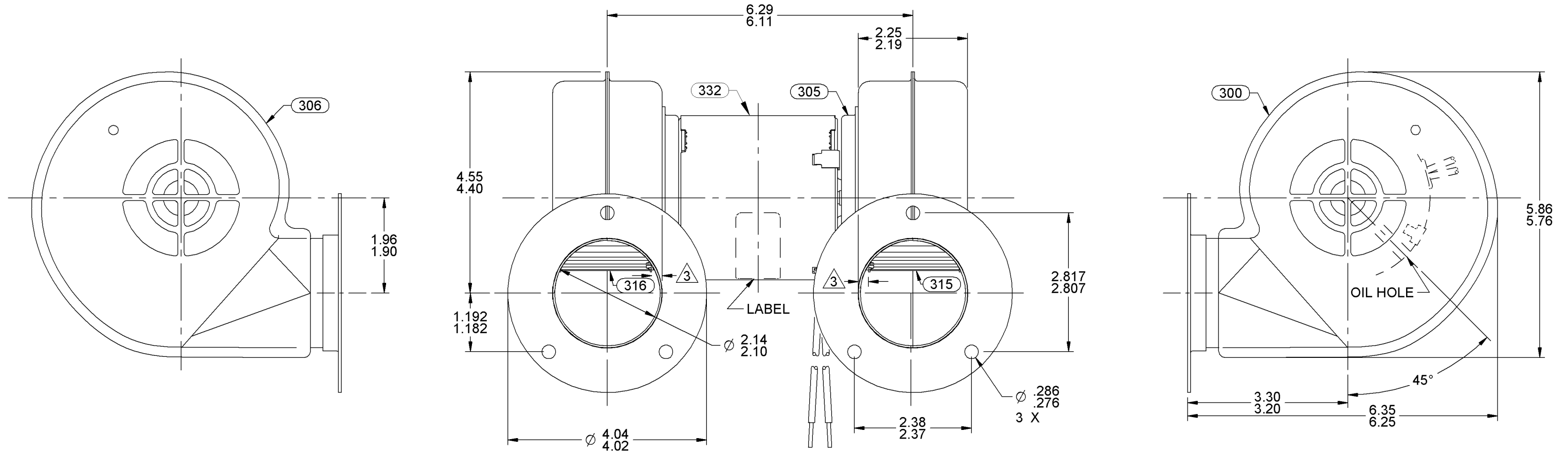


NOTES:

1. ASSEMBLE PC 321 WASHERS OVER WELD STUDS ON CLIP END BEFORE ASSEMBLING PC 305 MOUNTING CUP.
2. ASSEMBLE PC 305 MOUNTING CUP TO MOTOR BEFORE HOUSING. APPLY ONE DROP OF LOCTITE 290, PC 397, TO STUDS BEFORE ASSEMBLING MOUNTING CUP WITH PC 328 NUTS.
3. LOCATION OF IMPELLERS TO BE .250/.170 FROM EDGE OF MOUNTING CUP.
4. ASSEMBLE MOUNTING CUP TO BLOWER HOUSING USING PC 324 SCREWS.
5. FACE OF FLANGES TO BE IN SAME PLANE WITHIN 1/8".
6. PACK 1 PER CONTAINER, 100 MAX. PER PALLET, PACKING ASSY. 87854878, 20 CONTAINERS PER LAYER, 5 LAYERS PER PALLET, P.S. 88834200 AND P.S. 88834408.
7. CARTON LABELS MUST ALL FACE ONE DIRECTION TOWARD OPEN END OF THE PALLET. SEE P.S. 88834408.
8. NO PACKAGING TAPE OVER CARTON LABEL.

APPLICATION	COUNTER SALES									
	B	LA	FR	A	S	C	E	B	A	
THERMALLY PROTECTED	05	21	30	V	02	OG	5	1	0	
CUSTOMER	FASCO DIST.									
CUSTOMER PART NO.	50746-D500									

LEAD MATERIAL  
 18 GA. 125°C 2/64 INSUL.  
 X-LINKED POLY. (2) BLACK  
 20.00/18.00 IN. LONG  
 .56/.44 IN. STRIP



TYPICAL PERFORMANCE TEST DATA  
 IN FREE AIR

ECO. NO.	REV.	DATE	APPROVAL
4000549	43	12/16/10	KSA/RPT
4000599	44	12/21/10	KSA/RPT
4008395	45	2/25/2013	SDM/BGP
4008676	46	3/21/2013	SDM/KSA

AT 115 VOLTS 60 HZ.			
	R.P.M.	WATTS	AMPS
	3050	61	.77
BLOWER WEIGHT LBS.			END PLAY .050/.010

UNLESS OTHERWISE SPECIFIED DIMENSIONS ARE IN INCHES TOLERANCES ARE:

FRACTIONS ± 1/16	DECIMALS XX ± .01	ANGLES ± 1°
	XXX ± .005	

APPROVALS	DATE
DRAWN SDM	08/26/2003
CHECKED BGP	08/26/2003
FINISH COLOR	BLACK

**FASCO** FASCO MOTORS GROUP  
 AC MOTOR/BLOWER DIVISION

CONFIDENTIAL: DO NOT DUPLICATE OR DISCLOSE TO THIRD PARTIES WITHOUT WRITTEN PERMISSION OF FASCO MOTORS GROUP, AC MOTOR/BLOWER DIVISION.

TITLE		
BLOWER ASSEMBLY		
SIZE B	DWG. NO. 7021 1681	REV. 46
DO NOT SCALE DRAWING		SHEET 1 OF 1