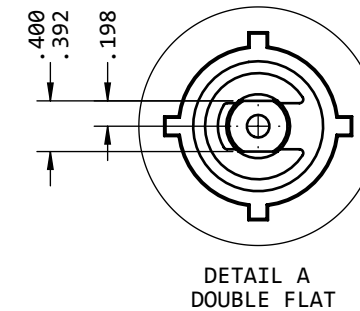
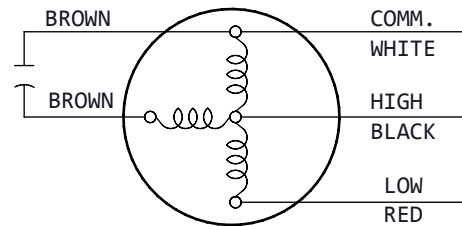


**SPECIFICATIONS**

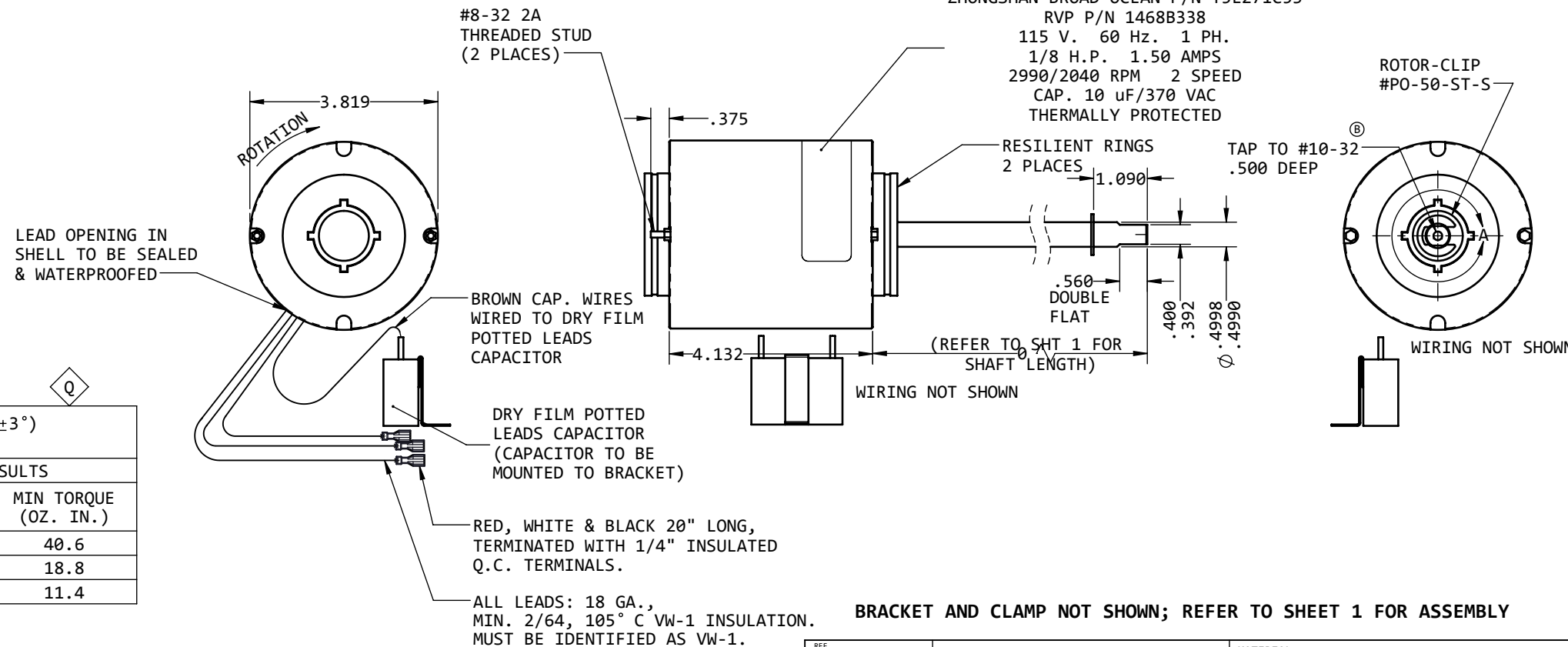
**MOTOR OPERATING**

ENVIRONMENT: OUTDOOR  
 LOAD APPLICATION: WHEEL  
 SHAFT POSITION: HORIZONTAL  
 SHAFT MATERIAL: HARDENED STEEL  
 MAX. SHAFT RUNOUT: .0024 INCHES TOTAL  
 (MEASURED AT ROTOR-CLIP GROOVE)  
 ENCLOSURE & FRAME TYPE: TOTALLY SEALED END BELLS & SHELL  
 END PLAY: .008 MIN. - .047 MAX.  
 BEARING TYPE: SEALED BALL BEARING  
 OILING FEATURES: NONE  
 ELECTRICAL LEADS: NOTED ON DRAWING  
 CAPACITOR: 10uF/370VAC, MIN. 5000 AFC (ATTACHED TO BRACKET)<sup>Q</sup>  
 DRY FILM, POTTED LEADS  
 WINDING INSULATION: CLASS B  
 MOUNTING MEANS: RESILIENT RINGS & CLAMPS ON BRACKET  
 THERMAL PROTECTED: YES  
 U.L. RECOGNIZED: YES cULus (MOTOR & CAPACITOR)  
 C.S.A RECOGNIZED: NO  
 SOUND LEVEL: Q.C. IGNORE  
 MAX. ALLOWABLE TEMPERATURE RISE: TBD  
 MAX. ALLOWABLE UNBALANCE: Q.C. IGNORE  
 MOTOR TYPE: PSC  
 NOMINAL VOLTS: 115 VAC, 60 Hz.  
 FULL LOAD AMPS: 1.3  
 MAX. BEARING TEMP.: TBD  
 MAX. WINDING TEMP.: TBD  
 ROTATION: C.W. LEAD END

**ACCEPTANCE CONDITIONS**  
 MOTORS SUPPLIED MUST CONFORM TO THE DIMENSIONAL, MECHANICAL, DYNAMOMETER AND SOUND LEVEL SPECIFICATIONS PER SAMPLE MOTOR LISTED UNDER APPROVED VENDOR. MOTORS RECEIVED WILL BE SUBJECT TO QUALITY CONTROL INSPECTION & TEST BEFORE FINAL NOTIFICATION AND APPROVAL.



**NAMEPLATE DATA**  
 ZHONGSHAN BROAD OCEAN P/N Y5L271C53  
 RVP P/N 1468B338  
 115 V. 60 Hz. 1 PH.  
 1/8 H.P. 1.50 AMPS  
 2990/2040 RPM 2 SPEED  
 CAP. 10 uF/370 VAC  
 THERMALLY PROTECTED



**COLD MOTOR INSPECTION DATA (AMBIENT 25°C ±3°)**  
 DYNAMOMETER MODEL HD-705-6

SETTINGS				RESULTS	
SPEED TAP	VOLTS	Hz	RPM	MAX. AMPS	MIN TORQUE (OZ. IN.)
HIGH	115	60	2990	1.63	40.6
LOW	115	60	2040	.90	18.8
MIN. LOCKED ROTOR TORQUE - LOW SPEED					11.4

APPROVED VENDOR: ZHONGSHAN BROAD-OCEAN  
 PART NO.: Y5L271C53

S.R.O. # 1469B3389  
 CONSISTS OF 1468B338 MOTOR  
 INDIVIDUALLY PACKED IN A RESHIPABLE CARTON.  
 STAMP CARTON: "ONE 1468B338 MOTOR"  
 AND WITH MOTOR SERIAL NO.

REF. DIM.	TOLERANCES DECIMAL	UNLESS OTHERWISE SPECIFIED	MATERIAL
	.X ± .1	◊ DIM. TO TANGENT POINT	
	.XX ± .05	◊ FLUSH WITHIN	
	.XXX ± .025	◊ DIM. TO INSIDE MOLD LINE	
	ANGULAR ± 3°	◊ SPOTWELD	
	FRACTIONAL ± 1/32	◊ DIM. TO OUTSIDE MOLD LINE	
		◊ BEND RADIUS:	
		PROJECTION - ALL DIMENSIONS IN INCHES - DO NOT SCALE PRINT	

BRACKET AND CLAMP NOT SHOWN; REFER TO SHEET 1 FOR ASSEMBLY

**RV PRODUCTS**  
 AIRXCEL INCORPORATED  
 WICHITA, KANSAS

SCALE: -- DATE: 08-07-15 DRAWN: JEANNE APPROVED: C.W.  
 SHT 2

NAME: **MOTOR (BROAD-OCEAN)** NO. **1468B338**

REVISIONS

LTR	DATE	BY	CHKD	DESCRIPTION
A	08/07/15	JA	JA	NEW TO ADD FELT SLEEVE
B	3-27-17	AL	AL	ADDED "MTN. 5000 AFC" TO CAPACITOR RATING
	04/17/18	JA	JA	TAP #10-32.500 DEEP WAS .182-.172 .500 DEEP #16 DRILL BIT

<sup>Q</sup> THIS DIMENSION, DETAIL OR SPECIFICATION IS CRITICAL AND NOT SUBJECT TO MRB ACTION.