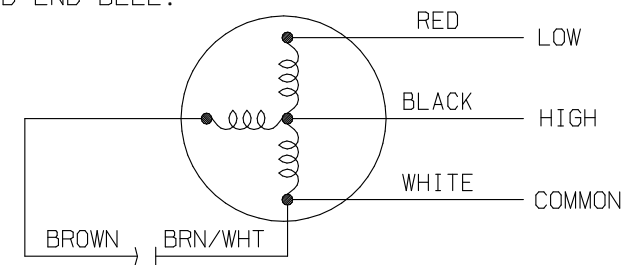


SHT. 2	NO. 1468B323
--------	--------------

MOTORS SUPPLIED MUST CONFORM TO THE DIMENSIONAL, MECHANICAL, DYNAMOMETER AND SOUND LEVEL SPECIFICATIONS PER SAMPLE MOTOR LISTED UNDER APPROVED VENDOR. MOTORS RECEIVED WILL BE SUBJECT TO QUALITY CONTROL INSPECTION & TEST BEFORE FINAL NOTIFICATION AND APPROVAL.



5.630
REF

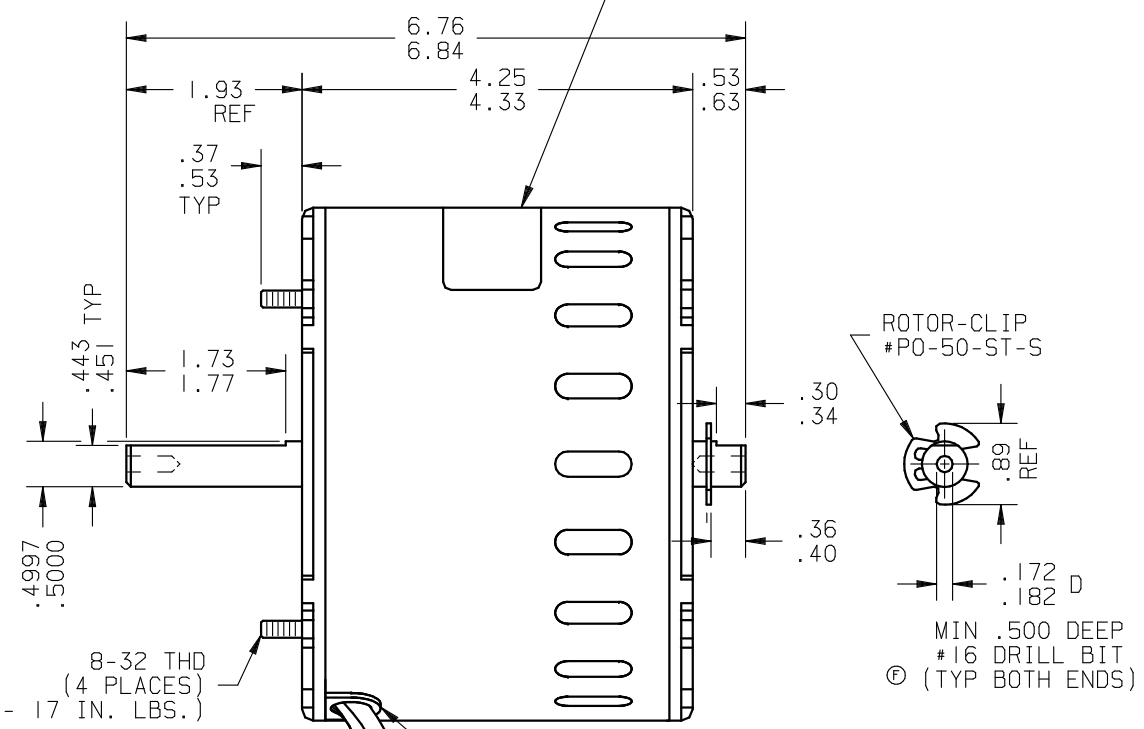
90°
ROTATION

5.10
5.14 D

(TO

NAMEPLATE DATA PRINTED BLACK [®]

ZHONGSHAN BROAD-OCEAN P/N: Y7L423C2 I
R.V.P. P/N 1468B323
115 V 60 HZ 1 PH 3.8 A
1/3 H.P. 1650-1465 RPM
CAP. 7.5 μ F - 370 V
THERMALLY PROTECTED



COLD MOTOR INSPECTION DATA (AMBIENT 25° ± 3°)					
DYNAMOMETER MODEL HD-705-6					
SETTINGS				TEST SPECIFICATIONS	
SPEED TAP	VOLTS	Hz	RPM	MAX. AMPS	MIN. TORQUE (Oz. In.)
HIGH	115	60	1640	4.20	224.2
LOW	115	60	1445	4.24	186.6
MIN. LOCKED ROTOR TORQUE - LOW SPEED					26.3

APPROVED VENDOR: ZHONGSHAN BROAD-OCEAN MOTOR CO.
PART NO.: Y7L423C2I
SAMPLE NO.:

S.R.O. # 1469B3239
CONSISTS OF 1468B323 MOTOR
INDIVIDUALLY PACKED IN A RESHIPPIABLE CARTON.
STAMP CARTON: "ONE 1468B3239 MOTOR"

 THIS DIMENSION, DETAIL OR SPECIFICATION
IS CRITICAL AND NOT SUBJECT TO MRB ACTION.

REF. DWG.		UNLESS OTHERWISE SPECIFIED		MATERIAL		R. V. PRODUCTS		DIVISION OF	
TOLERANCES DECIMAL		DIMENSION CODE		NOTE CODE		AIRCEL INCORPORATED WICHITA, KANSAS		CHKD	
.x ± .1		A DIM. TO TANGENT POINT		F FLUSH WITHIN		SCALE NONE		DATE 3-11-09	
.xx ± .06		B DIM. TO INSIDE MOLD LINE		S SPOTWELD		DRAWN BY AL		APPROVED D.G.	
.xxx ± .030		C DIM. TO OUTSIDE MOLD LINE		BEND RADIUS -		SHT. 2 OF 2			
ANGULAR ± 0°30'		FRACTIONAL ±		SCALE PRINT		NAME		NO.	
ALL DIMENSIONS IN INCHES - DO NOT						MOTOR (BROAD-OCEAN)		1468B323	