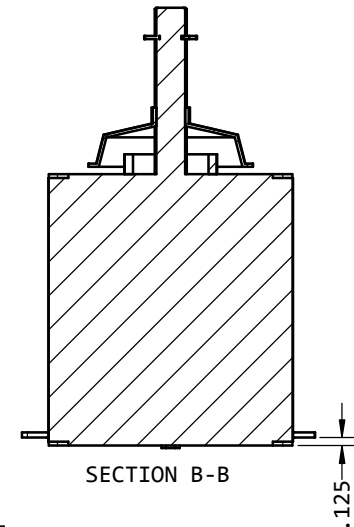
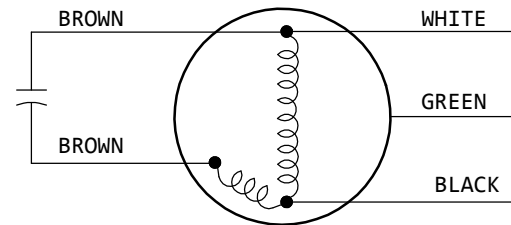


| | |
|-----------------|------|
| NO. | SHT. |
| 1468A339 | |

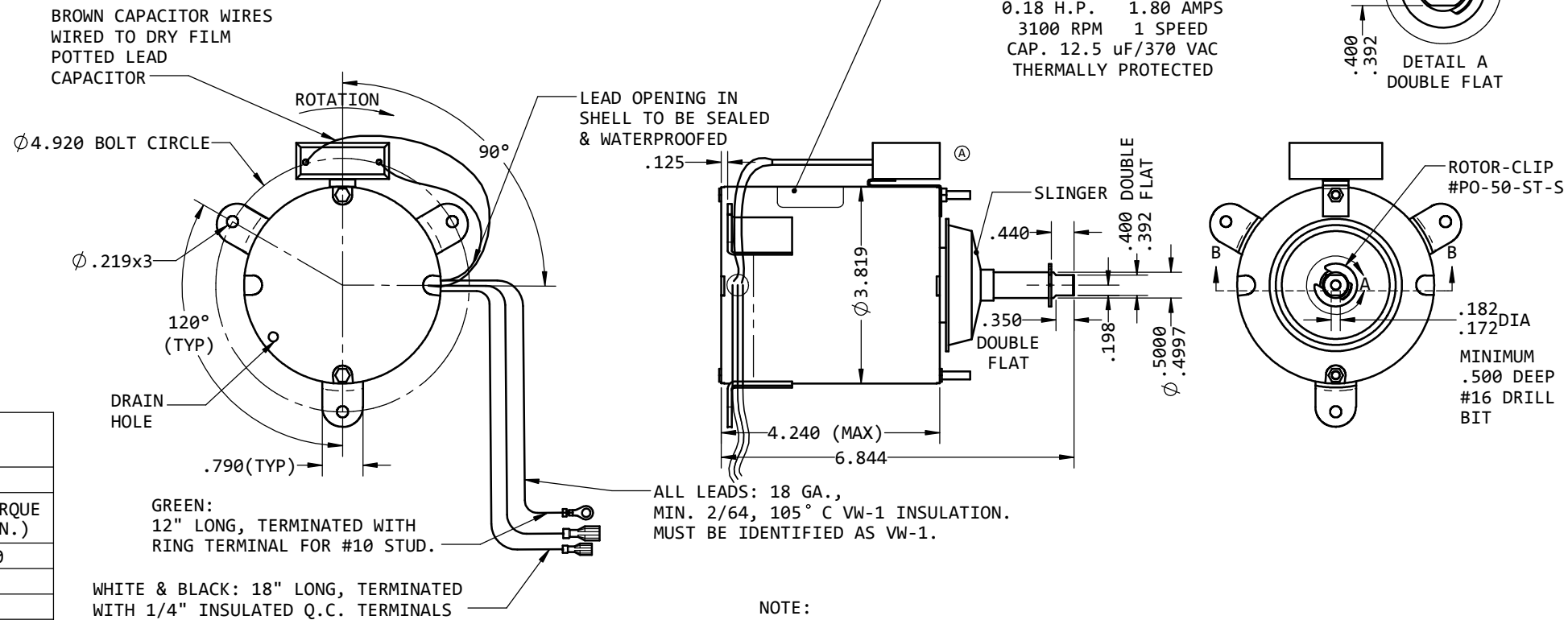
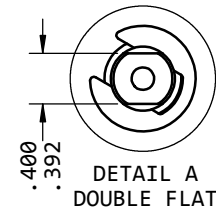
INACTIVE

ACCEPTANCE CONDITIONS



NAMEPLATE DATA

ZHONGSHAN BROAD-OCEAN P/N Y5L271D02
RVP P/N 1468A339
115 V. 60 Hz 1 PH.
0.18 H.P. 1.80 AMPS
3100 RPM 1 SPEED
CAP. 12.5 uF/370 VAC
THERMALLY PROTECTED





NOTE:
LEADS AND CAPACITOR MUST BE POSITIONED
AS SHOWN.

| COLD MOTOR INSPECTION DATA (AMBIENT 25 °C ±3 °) | | | | | |
|---|-------|----|------|-----------|--------------------------|
| DYNAMOMETER MODEL HD-705-6 | | | | | |
| SETTINGS | | | | RESULTS | |
| SPEED TAP | VOLTS | Hz | RPM | MAX. AMPS | MIN. TORQUE (OZ. IN.) |
| HIGH | 115 | 60 | 3100 | 2.05 | 56.0 |
| | | | | | |
| | | | | | |
| | | | | | |
| MIN. LOCKED ROTOR TORQUE (OZ. IN.) | | | | | 25.61 |

S.R.O. # 1469A3399
CONSISTS OF 1468A339 MOTOR
INDIVIDUALLY PACKED IN A RESHIPABLE CARTON.
STAMP CARTON: "ONE 1468A339 MOTOR"
AND WITH
MOTOR SERIAL NO.

THIS DIMENSION, DETAIL OR SPECIFICATION IS CRITICAL AND SUBJECT TO MRB ACTION.

| | | | | | | |
|--|--|--|--|----------------------------------|---|------------------------|
| REF. DWG. TOLERANCES DECIMAL .X ± .1 .XX ± .05 .XXX ± .025 ANGULAR ± 3' FRACTIONAL ± 1/32   PROJECTION - ALL DIMENSIONS IN INCHES - DO NOT SCALE PRINT | UNLESS OTHERWISE SPECIFIED ⬡ DIM. TO TANGENT POINT ⬢ DIM. TO INSIDE MOLD LINE ⬢ DIM. TO OUTSIDE MOLD LINE | | ⬢ FLUSH WITHIN ⬢ SPOTWELD BEND RADIUS: | MATERIAL FINISH SPEC. NAME | DIVISION OF AIRXCEL INCORPORATED WICHITA, KANSAS CHECKED APPROVED PHIL R | NO. 1468A339 |
| | SCALE -- | | DATE 05-22-12 | DRAWN JEANNE | MOTOR (BROAD-OCEAN) | |
| | | | | | | |
| | | | | | | |