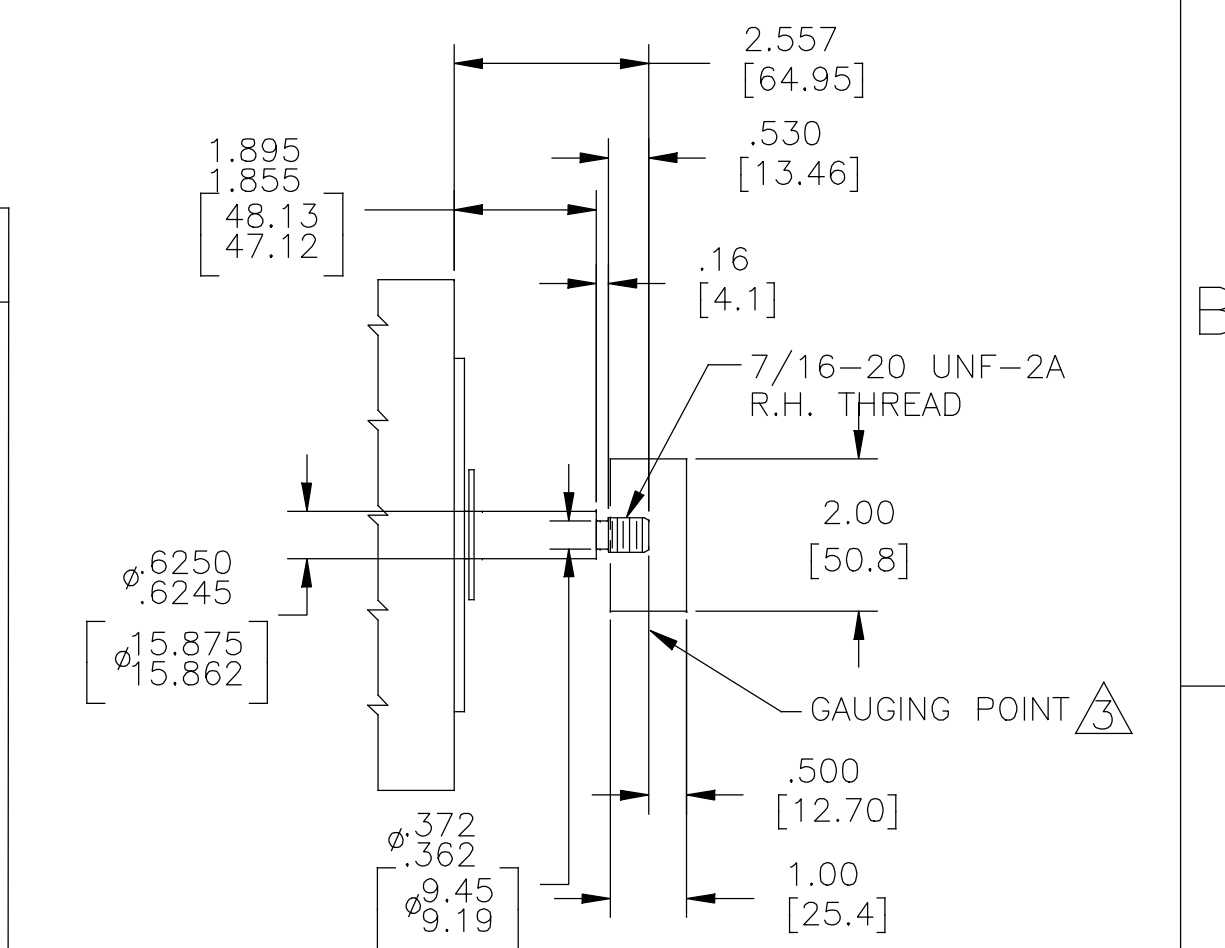


NAMEPLATE DATA	EXTERNAL CONNECTION DIAGRAM	NOTES
MODEL: 193690 CUST PN: USN1302 HP: 3.0 SF: 1.2 ROT: CW RPM: 3450 TYPE: CX CODE: G FORM: KJM FRAME: R56J VOLTS: 208-230 AMPS: SF 16.0-14.8 MAX AMPS: SF AMPS: - PH: 1 HZ: 60 INS: B AMB: 50 DUTY: CONT ENCLOSURE: ODP THERMALLY PROTECTED		NOTES: 1. SHAFT RUNOUT NOT TO EXCEED .002[.05] T.I.R. 2. FOR THREADED SHAFT EXT. MATING, PARTS SHOULD BE RELIEVED ONE THREAD TO CLEAR FILLET. 3. FOR THREADED SHAFT EXT. ECCENTRICITY OF THREADED PORTION OF SHAFT IS HELD WITHIN .004[.10] TOTAL GAUGE READING WITH THE INDICATOR ON O.D. OF GROUND RING GAGE AS SHOWN. THE GAGE BEING STATIONARY WITH RESPECT TO THE ROTOR. 4. END PLAY NOT TO EXCEED .010[.25] MEASURED WITH NO THRUST. 5. FRONT END FRAME TO BE ALIGNED WITH BACK END FRAME TO WITHIN ±1° RADIAL ALIGNMENT ±.060[±1.52]



PERFORMANCE CURVE	APPROVED SAMPLE		
19245911			
UL COMPONENT	CSA		
FILE#	CCN#	FILE#	GUIDE#
PENDING	PENDING	PENDING	PENDING
CUSTOMER			

DRAWING REVISION	REVISION BY	DATE	TOLERANCES UNLESS OTHERWISE SPECIFIED
C	G. RODRIGUEZ	05-02-2019	DEC. INCH mm ANGLE
ECO	APPROVED BY	DATE	.XX ±0.1 [±2.5] ±0.5°
ECO-0165900	G. RODRIGUEZ	05-02-2019	.XX ±0.02 [±0.51]
ECO DESCRIPTION			.XXX ±0.005 [±0.127]
SEE ECO			.XXXX ±0.0005 [±0.0127]

DRAWN BY: FX DATE: 08-25-2010 APPROVED BY: KG DATE: 08-28-2010 REFERENCE:		REGAL Regal Beloit America, Inc. DESCRIPTION: MODEL-PFHP-56FR OUTLINE MATERIAL: _____ PROCESS/FINISH: _____	
THIRD ANGLE PROJECTION	SIZE DWG NO	C USN1302	SHEET 1