

4

3

2

1

GENERAL INFORMATION:

SHAFT RUNOUT: .001[.03] T.I.R. PER INCH LENGTH OF EXTENSION.

END PLAY: .010[.25] TO .063[1.6]

BEARINGS: SLEEVE

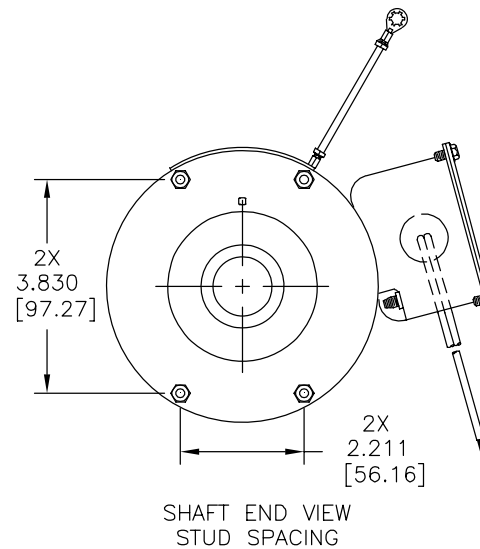
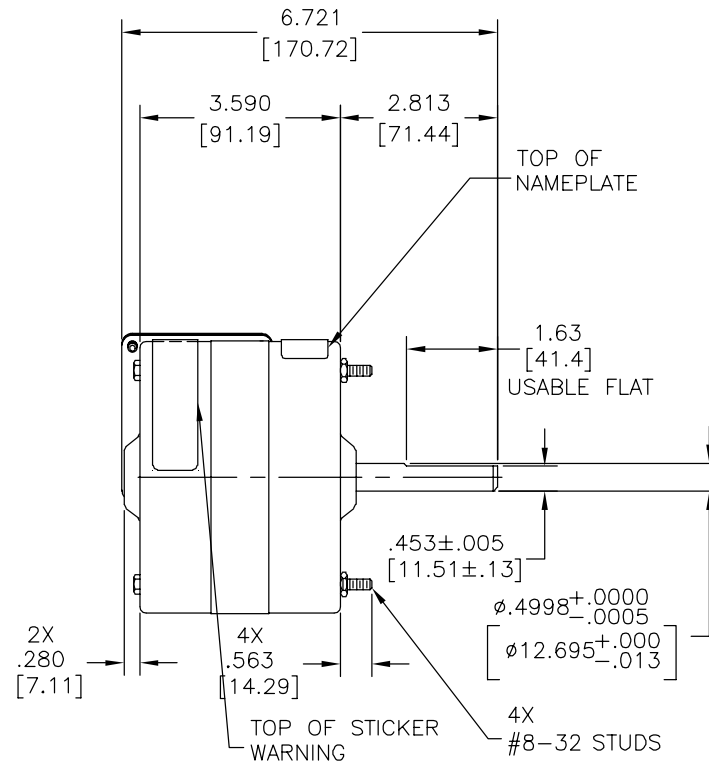
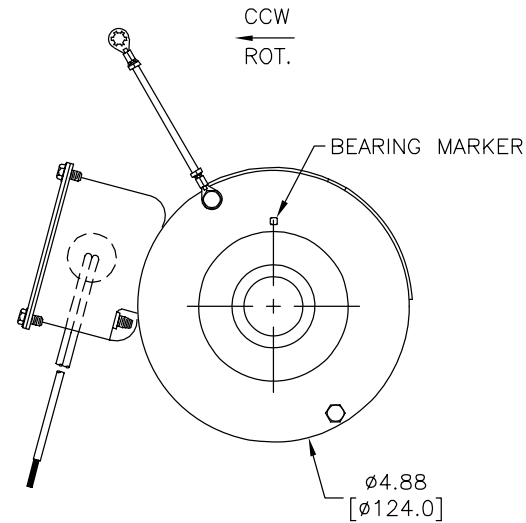
MOUNTING POSITION: HORIZONTAL

ELECTRICAL DATA:

OVERLOAD PROTECTOR: AUTOMATIC RESET (T.I. 7AM 034)

LEADS: NO. 18 GA., .03[.8] THK., PVC 125°C INSUL.

NOTE:
DISTRIBUTION: CUST. P/N: U6433
GRAINGER: CUST. P/N: 4UU91



SEE NOTE

NAMEPLATE DATA:	EXTERNAL CONNECTION DIAGRAM
MODEL NO.: B42A92A01 CUST. P/N: [] HP: 1/15 ROT: CCWLE RPM: 1050 TYPE: FE FRAME: 42Y VOLTS: 115 PH: 1 AMPS: 3.3 HZ: 60 INS: B AMB: 40°C DUTY: AIR OVER CSA LOGO UL LOGO THERMALLY PROTECTED TYPE C	

REGAL-BELOIT CORPORATION (RBC) PROVIDES TECHNICAL ASSISTANCE TO OUR CUSTOMERS IN SEVERAL AREAS. SINCE RBC DOES NOT RECEIVE ALL DATA CONCERNING THE USE AND APPLICATION OF THE MOTOR, THE SUITABILITY OF THE MOTOR FOR THE APPLICATION MUST BE DETERMINED BY THE CUSTOMER.

DIMENSIONS WITHOUT TOLERANCES ARE FOR REFERENCE ONLY.

GREEN(GRD.)	12.0/14.0 [304/356]	#10 EYELET
WHITE	6.0/8.0 [914/203]	.75[19.1] STRIP
BLACK	6.0/8.0 [914/203]	.75[19.1] STRIP
COLOR	LENGTH	TERMINAL OR STRIP LENGTH

MAIN-FR.-OLE	ENCLOSED
END FR.-OLE	ENCLOSED
MAIN FR.-LE	ENCLOSED
END FR.LE	ENCLOSED

CUSTOMER	DISTRIBUTION SERVICES
----------	-----------------------

PERFORMANCE CURVE NO.	TORQUE @ 1050 RPM (25°C)	APPROVED SAMPLE	UL COMPONENT		CSA	
			FILE #	CCN #	FILE #	CLASS #
C31135	8.3 OZ. FT.	94AC108C	E46412	PRGY2	LR43341	4211-01

LEAD DATA

DRAWING REVISION	REVISION BY	DATE
H	E.GONG	03-04-2015
ECO	APPROVED BY	DATE
ECO-0072865	C.ZHANG	03-04-2015
ECO DESCRIPTION		
SEE ECO		

COPYRIGHT REGAL-BELOIT AMERICA, INC. ALL RIGHTS RESERVED. PROPRIETARY AND CONFIDENTIAL INFORMATION - THIS DOCUMENT IS THE PROPERTY OF REGAL-BELOIT AMERICA, INC. (OWNER) AND CONTAINS OWNER'S PROPRIETARY INFORMATION. ANY PERSON, CORPORATION OR OTHER FIRM RECEIVING IT IS DEEMED, BY RECEIVING IT, TO AGREE THAT IT, AND/OR ANY PART OF IT, SHALL NOT BE DISCLOSED TO ANY PERSON, CORPORATION OR OTHER ENTITY, DUPLICATED, AND/OR USED, EXCEPT AS EXPRESSLY APPROVED IN WRITING IN ADVANCE BY OWNER. THIS DOCUMENT SHALL BE RETURNED TO OWNER UPON REQUEST. IT MAY BE SUBJECT TO CERTAIN RESTRICTIONS UNDER APPLICABLE EXPORT CONTROL LAWS AND REGULATIONS.

ENCLOSURE

DRAWN BY:	J.W.
DATE:	08-19-2004
APPROVED BY:	J.W.
DATE:	08-19-2004
REFERENCE	

REGAL™ Regal Beloit America, Inc.

MODEL-RFHP-48FR
OUTLINE

MATERIAL		PROCESS/FINISH	
SIZE	DWG NO	SHEET	
C	12252-002	1	

4

3

2

1