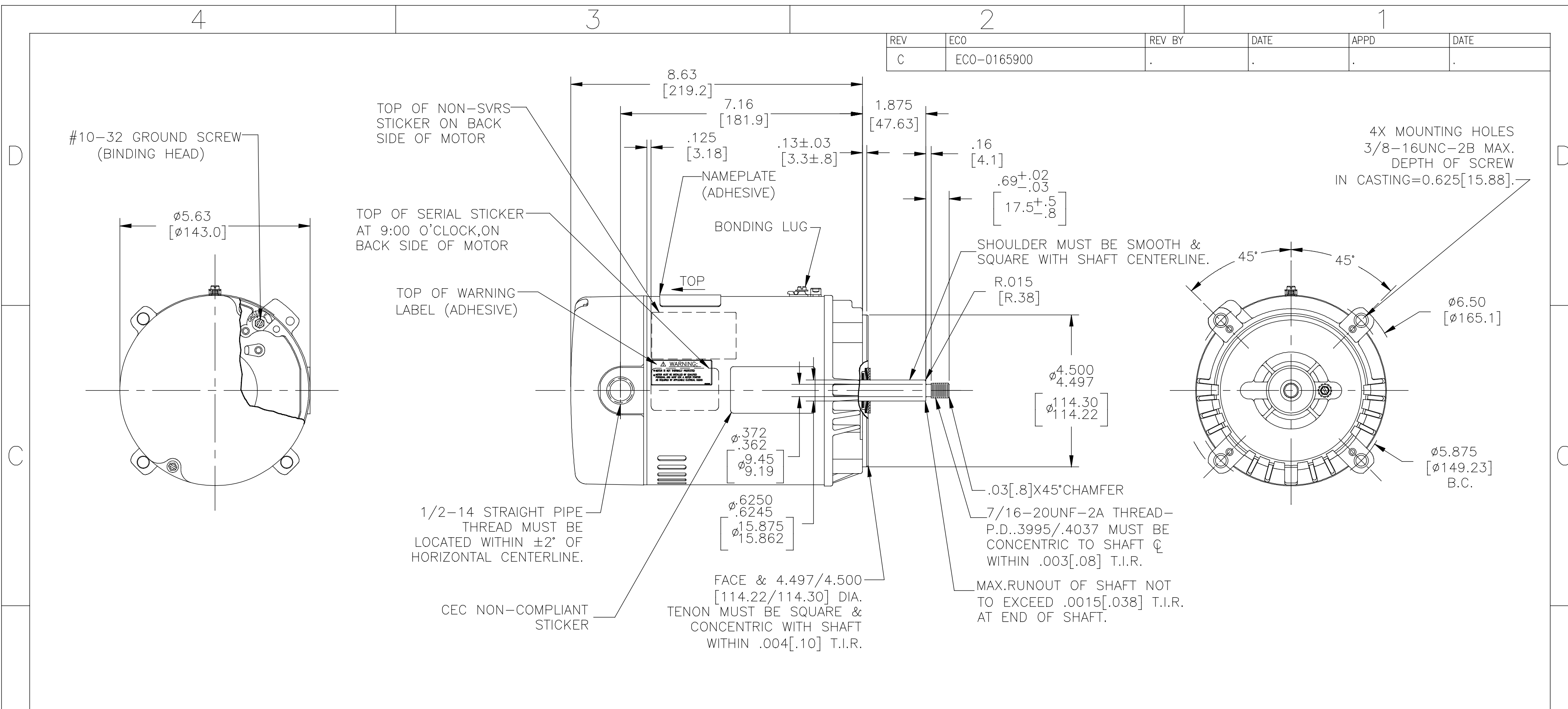


REV	ECO	REV BY	DATE	APPD	DATE
C	ECO-0165900				



NAMEPLATE DATA	EXTERNAL CONNECTION DIAGRAM	NOTES
MODEL: P48J2DA7 CUST PN: T3052 HP: 1/2 SF: 1.6 ROT: CCWPE RPM: 3450 TYPE: P CODE: N FORM: --- FRAME: 56J VOLTS: 208-230/460 AMPS: 2.0/1.0 MAX AMPS: 2.7/1.35 SF AMPS: --- PH: 3 HZ: 60 INS: B AMB: 40 DUTY: CONT ENCLOSURE: ODP		<ol style="list-style-type: none"> FINISH PAINT TO BE SATIN BLACK. .44[11.2] WRENCH FLATS ON SHAFT -FOR ACCESS TO THIS WRENCH FLAT REMOVE END COVER. STAINLESS STEEL SHAFT EXT. LIMITS ON AMPLITUDE OF VIBRATION MEASURED AT BEARING HOUSING = .001[.03]. MAX. END PLAY LESS THAN .005[.13].

PERFORMANCE CURVE P48J2W1	APPROVED SAMPLE -	GEOMETRIC CHARACTERISTICS & SYMBOLS ▽ FLATNESS - STRAIGHTNESS < ANGLARITY ⊥ PERPENDICULARITY (SQUARENESS) // PARALLELISM ○ ROUNDNESS (CIRCULARITY) ∅ CYLINDRICITY △ PROFILE OF ANY SURFACE ∩ PROFILE OF ANY LINE ↑ RUNOUT ⊕ TRUE POSITION ⊙ CONCENTRICITY = SYMMETRY ASME Y14.5M 1994	UNLESS OTHERWISE SPECIFIED DIM. TOLERANCES ARE AS FOLLOWS: INCH X XX XXX XXXX mm ±0.5 ±0.13 ±0.013 ANG. ±50 DEG REMOVE BURRS & BREAK SHARP EDGES: INCH .003-.015 mm 0.1-0.4 CORNER FILLETS TO: INCH .020 mm 0.5 MACHINE SURFACES: INCH 125 mm 3.2	DR BY: J Z 11-04-2010	
UL COMPONENT P48J2W1	CSA -		DIM. TOLERANCES ARE AS FOLLOWS: INCH X XX XXX XXXX mm ±0.5 ±0.13 ±0.013 ANG. ±50 DEG REMOVE BURRS & BREAK SHARP EDGES: INCH .003-.015 mm 0.1-0.4 CORNER FILLETS TO: INCH .020 mm 0.5 MACHINE SURFACES: INCH 125 mm 3.2	APPD: T Z 11-04-2010 EDS DATE 11-11-2011 FORMAT REV G	
FILE#	CCN#	FILE#	GUIDE#	THIRD ANGLE PROJECTION	CONFIDENTIAL: THIS DRAWING AND ITS INFORMATION ARE THE EXCLUSIVE AND CONFIDENTIAL PROPERTY OF REGAL-BELOIT CORPORATION AND ARE NOT TO BE DISCLOSED, DUPLICATED, DISTRIBUTED OR OTHERWISE USED WITHOUT THE WRITTEN CONSENT OF REGAL-BELOIT CORPORATION. -ALL RIGHTS RESERVED.
CUSTOMER	DISTRIBUTION SERVICES			SCALE NONE	SIZE C DWG NO T3052 SHEET 1