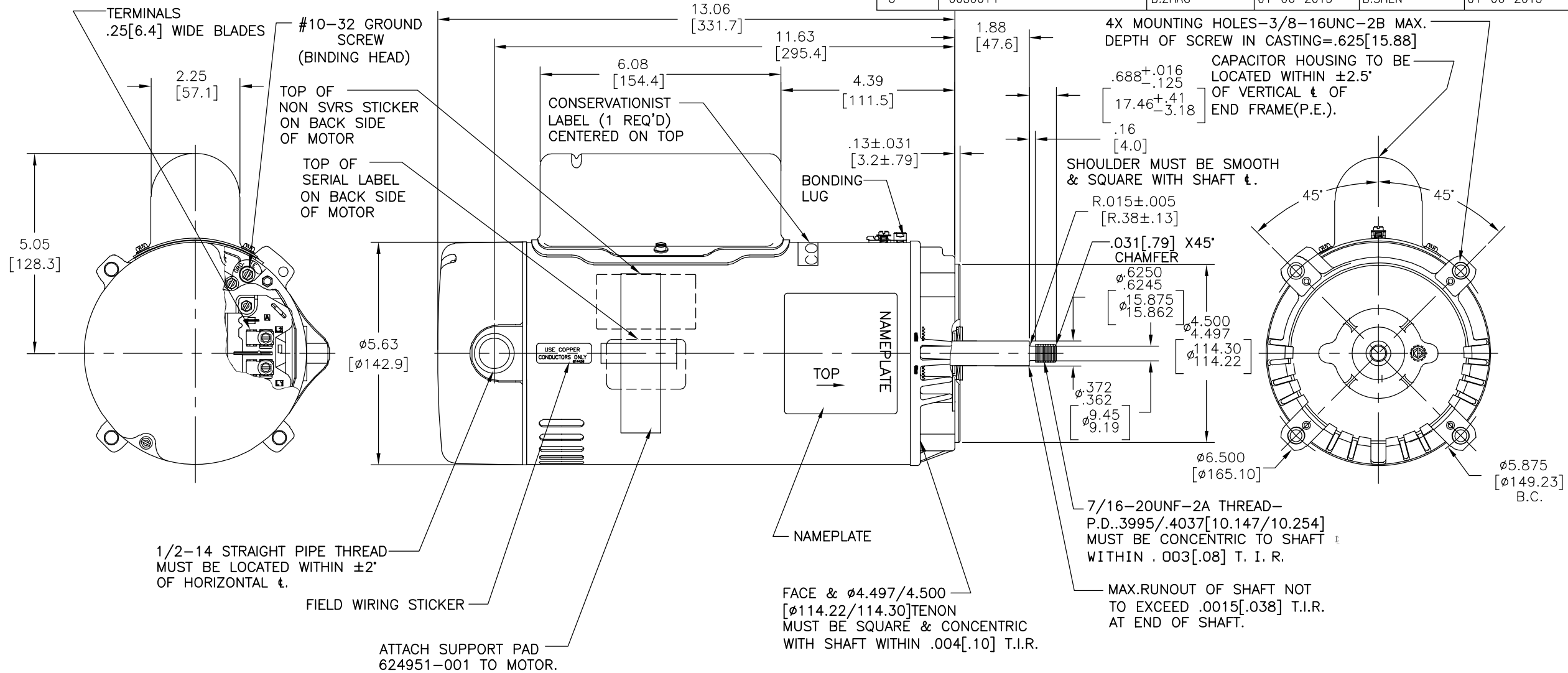


REV	ECO	REV BY	DATE	APPD	DATE
C	0030014	B.ZHAO	01-06-2013	B.SHEN	01-06-2013



NAMEPLATE DATA	EXTERNAL CONNECTION DIAGRAM	NOTES
MODEL: K48M2N118A2 CUST PN: STS1152R HP: 1 1/2, 1/4 SF: 1.3 ROT: CCWPE RPM: 3450/1725 TYPE: K CODE: J FORM: FRAME: 56J VOLTS: 230 AMPS: MAX AMPS: 9.0/3.3 SF AMPS: - PH: 1 HZ: 60 INS: B AMB: 40°C DUTY: CONT ENCLOSURE: ODP THERMALLY PROTECTED	<p>GREEN (GROUND)</p> <p>L2 = LINE L1 = HI SPEED A = LO SPEED</p> <p>USE COPPER CONDUCTORS ONLY. INSTALL MOTOR WITH VENTS DOWN. ACCEPTABLE FOR FIELD WIRING</p>	<ol style="list-style-type: none"> FINISH PAINT TO BE PRIME COAT. .44[11.2] WRENCH FLATS ON SHAFT -FOR ACCESS TO THIS WRENCH FLAT REMOVE END COVER. STAINLESS STEEL SHAFT EXT. LIMITS ON AMPLITUDE OF VIBRATION MEASURED AT BEARING HOUSING = .001[.02].

PERFORMANCE CURVE	APPROVED SAMPLE	GEOMETRIC CHARACTERISTICS & SYMBOLS ▢ FLATNESS - STRAIGHTNESS ∠ ANGULARITY ⊥ PERPENDICULARITY (SQUARENESS) // PARALLELISM ○ ROUNDNESS (CIRCULARITY) ∅ CYLINDRICITY △ PROFILE OF ANY SURFACE ∩ PROFILE OF ANY LINE † RUNOUT ⊕ TRUE POSITION ⊙ CONCENTRICITY = SYMMETRY	UNLESS OTHERWISE SPECIFIED DIM. TOLERANCES ARE AS FOLLOWS: INCH X XX XXX XXXX ±.1 ±.02 ±.005 ±.0005 mm ±0.5 ±0.13 ±0.013 ANG. ±50 DEG REMOVE BURRS & BREAK SHARP EDGES: INCH .003-.015 mm 0.1-0.4 CORNER FILLETS TO: INCH .020 mm 0.5 MACHINE SURFACES: INCH 125 mm 3.2	DR BY: FX	10-12-2010	REGAL-BELOIT CORPORATION		
K48M2W4	CSA			APPD: TZ	10-12-2010		DESCRIPTION MODEL-PFHP-48FR OUTLINE	
UL COMPONENT	FILE#	CCN#	FILE#	GUIDE#	THIRD ANGLE PROJECTION	EDS DATE 11-11-2011	SIZE C	DWG NO STS1152R
E25022	XEWR2	LR43341	4211-01		CONFIDENTIAL: THIS DRAWING AND ITS INFORMATION ARE THE EXCLUSIVE AND CONFIDENTIAL PROPERTY OF REGAL-BELOIT CORPORATION AND ARE NOT TO BE DISCLOSED, DUPLICATED, DISTRIBUTED OR OTHERWISE USED WITHOUT THE WRITTEN CONSENT OF REGAL-BELOIT CORPORATION. -ALL RIGHTS RESERVED.	FORMAT REV H	SCALE NONE	SHEET 1