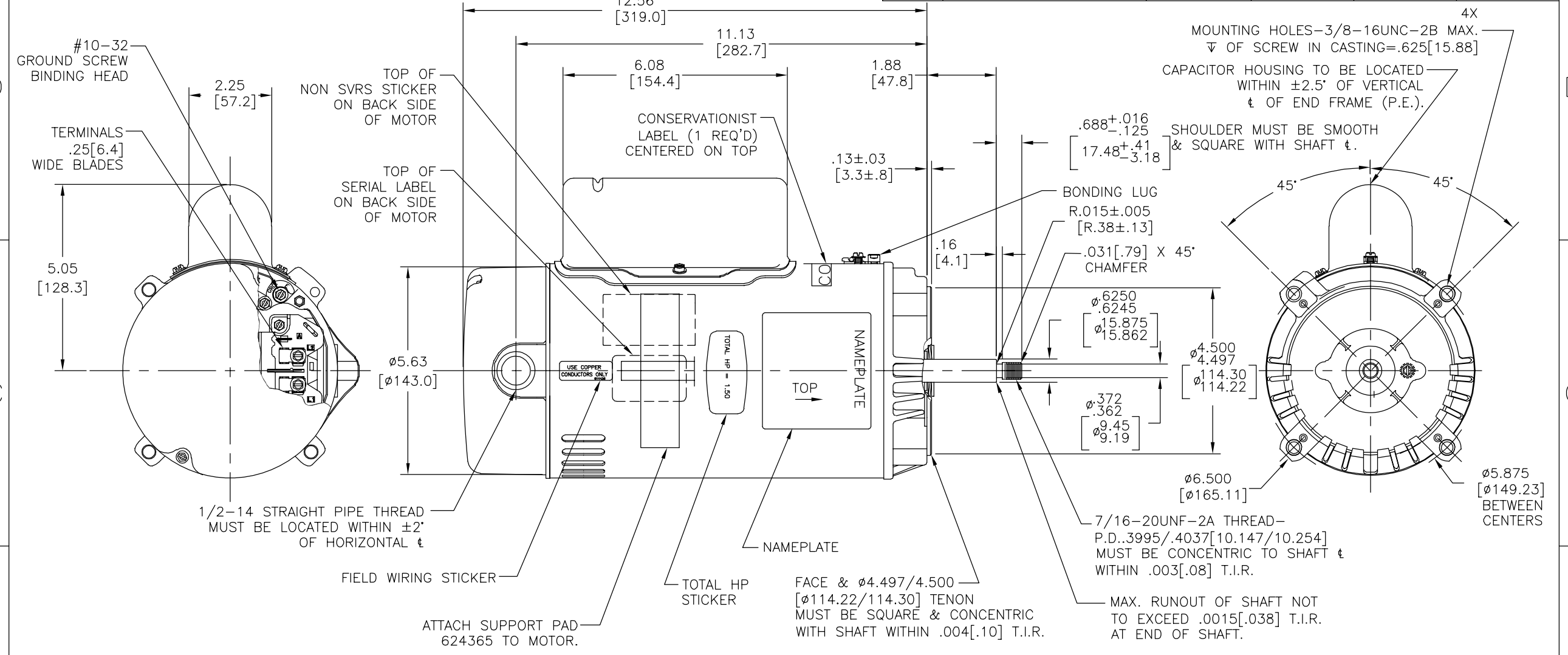


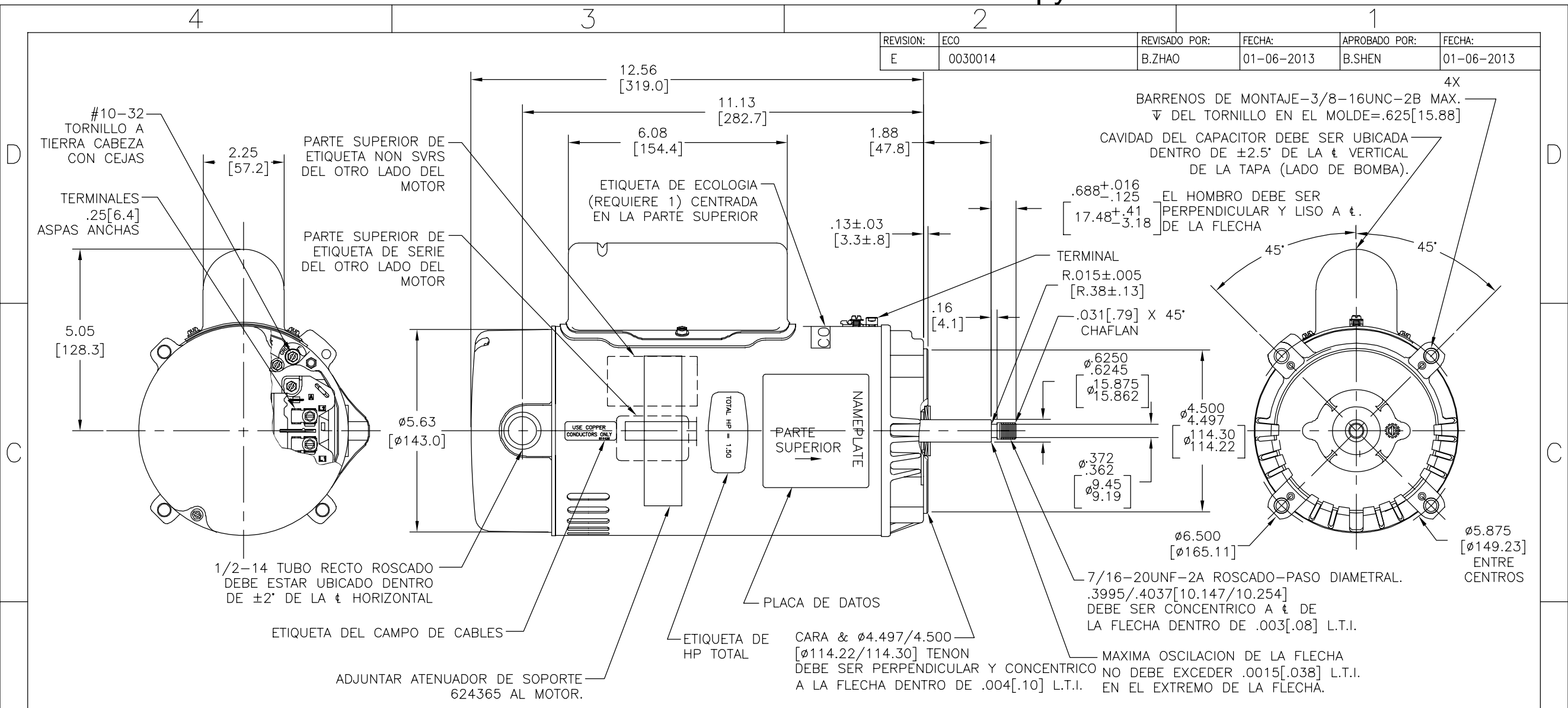
REV	ECO	REV BY	DATE	APPD	DATE
E	0030014	B.ZHAO	01-06-2013	B.SHEN	01-06-2013



NAMEPLATE DATA	EXTERNAL CONNECTION DIAGRAM	NOTES
MODEL: K48A74A01 CUST PN: STS1102RV1 HP: 1.0/0.13 SF: 1.5 ROT: CCWPE RPM: 3450/1725 TYPE: F/C CODE: J FORM: FRAME: 56J VOLTS: 230 AMPS: MAX AMPS: 7.0/2.3 SF AMPS: - PH: 1 HZ: 60 INS: B AMB: 50°C DUTY: CONT ENCLOSURE: ODP THERMALLY PROTECTED	<p> L2 = LINE L1 = HI SPEED A = LO SPEED USE COPPER CONDUCTORS ONLY. INSTALL MOTOR WITH VENTS DOWN. ACCEPTABLE FOR FIELD WIRING </p>	<ol style="list-style-type: none"> FINISH PAINT TO BE PRIME COAT. .44 [11.2] WRENCH FLATS ON SHAFT -FOR ACCESS TO THIS WRENCH FLAT REMOVE END COVER. STAINLESS STEEL SHAFT EXT. LIMITS ON AMPLITUDE OF VIBRATION MEASURED AT BEARING HOUSING=.001 [.03]. 1.50 SF HP

PERFORMANCE CURVE	APPROVED SAMPLE	GEOMETRIC CHARACTERISTICS & SYMBOLS ▽ FLATNESS - STRAIGHTNESS ∠ ANGULARITY ⊥ PERPENDICULARITY (SQUARENESS) // PARALLELISM ○ ROUNDNESS (CIRCULARITY) ∅ CYLINDRICITY △ PROFILE OF ANY SURFACE ∩ PROFILE OF ANY LINE ↗ RUNOUT ⊕ TRUE POSITION ⊙ CONCENTRICITY = SYMMETRY	UNLESS OTHERWISE SPECIFIED DIM. TOLERANCES ARE AS FOLLOWS: INCH X XX XXX XXXX ±.1 ±.02 ±.005 ±.0005 mm ±0.5 ±0.13 ±0.013 ANG. ±.50 DEG REMOVE BURRS & BREAK SHARP EDGES: INCH .003-.015 mm 0.1-0.4 CORNER FILLETS TO: INCH .020 mm 0.5 MACHINE SURFACES: INCH 125 mm 3.2 METRIC DIMS. SHOWN IN [BRACKETS]	DR BY: keyun.gong 09-25-2008	REGAL-BELOIT CORPORATION DESCRIPTION: MODEL-PFHP-48FR OUTLINE SIZE: C DWG NO: STS1102RV1 SCALE: NONE SHEET: 1
K48L2W9	0345591			APPD: J.Reynolds 09-25-2008 EDS DATE 11-11-2011 FORMAT REV H THIRDS ANGLE PROJECTION CONFIDENTIAL: THIS DRAWING AND ITS INFORMATION ARE THE EXCLUSIVE AND CONFIDENTIAL PROPERTY OF REGAL-BELOIT CORPORATION AND ARE NOT TO BE DISCLOSED, DUPLICATED, DISTRIBUTED OR OTHERWISE USED WITHOUT THE WRITTEN CONSENT OF REGAL-BELOIT CORPORATION. -ALL RIGHTS RESERVED.	

REVISION:	ECO	REVISADO POR:	FECHA:	APROBADO POR:	FECHA:
E	0030014	B.ZHAO	01-06-2013	B.SHEN	01-06-2013



NAMEPLATE DATA	EXTERNAL CONNECTION DIAGRAM	NOTES
MODEL: K48A74A01 CUST PN: STS1102RV1 HP: 1.0/0.13 SF: 1.5 ROT: CCWPE RPM: 3450/1725 TYPE: F/C CODE: J FORM: FRAME: 56J VOLTS: 230 AMPS: MAX AMPS: 7.0/2.3 SF AMPS: - PH: 1 HZ: 60 INS: B AMB: 50°C DUTY: CONT ENCLOSURE: ODP THERMALLY PROTECTED	<p> L2 = LINE L1 = HI SPEED A = LO SPEED USE COPPER CONDUCTORS ONLY. INSTALL MOTOR WITH VENTS DOWN. ACCEPTABLE FOR FIELD WIRING. </p>	<ol style="list-style-type: none"> ACABADO DE PINTURA DEBE SER CUBIERTA EN PLENITUD. .44[11.2] LLAVES PLANAS EN FLECHA -PARA ACCESO A ESTA LLAVE PLANA REMOVER LA CUBIERTA. EXTENSION DE FLECHA DE ACERO INOXIDABLE. LOS LIMITES EN LA AMPLITUD DE LA VIBRACION MEDIDA EN LA CAVIDAD DEL BALERO DEBEN SER DE=.001[.03]. 1.50 SF HP

PERFORMANCE CURVE	APPROVED SAMPLE	CARACTERISTICAS DE GEOMETRIA Y SIMBOLOS ▽ PLANICIDAD - RECTITUD < ANGULARIDAD ⊥ PERPENDICULARIDAD (A ESCUADRA) // PARALELISMO ○ REDONDEZ (CIRCULARIDAD) ∅ CILINDRICIDAD △ PERFIL DE CUALQUIER SUPERFICIE ∇ PERFIL DE CUALQUIER LINEA ↗ VARIACION ⊕ POSICION REAL ⊙ CONCENTRICIDAD = SIMETRIA	A MENOS QUE SE ESPECIFIQUE DE OTRA MANERA, LAS TOLERANCIAS DE LAS DIMS; SON LAS SIGUIENTES: PULG ±.1 ±.02 ±.005 ±.0005 mm ±0.5 ±0.13 ±0.013 ANG. ± 50 GRADOS ELIMINAR REBABAS Y ORILLAS FILOSAS DEL BORDE. PULG .003-.015 mm 0.1-0.4 FILETEAR ESQUINA: PULG .020 mm 0.5 MAQUINAR SUPERFICIES PULG 125 mm 3.2	DIBUJADO POR: keyun.gong	09-25-2008	REGAL-BELOIT CORPORATION	
K48L2W9	0345591			UL COMPONENT CSA	APROBADO POR: J.Reynolds		09-25-2008
FILE#	CCN#	FILE#	GUIDE#	TERCER ANGULO DE PROYECCION	FECHA EDS: 11-11-2011 REV. FORMATO: H	TAMAÑO: C	NUMERO DE DIBUJO: STS1102RV1
E25022	XEWR2	LR43341	4211-01	CONFIDENCIAL: ESTE DIBUJO Y SU INFORMACION SON PROPIEDAD DE USO EXCLUSIVO Y CONFIDENCIAL DE REGAL-BELOIT CORPORATION. Y NO DEBERAN SER REVELADOS, DUPLICADOS, DISTRIBUIDOS O USARSE DE OTRA MANERA SIN EL CONSENTIMIENTO ESCRITO DE REGAL-BELOIT CORPORATION. -TODOS LOS DERECHOS RESERVADOS.	ESCALA:NONE	HOJA: 1	