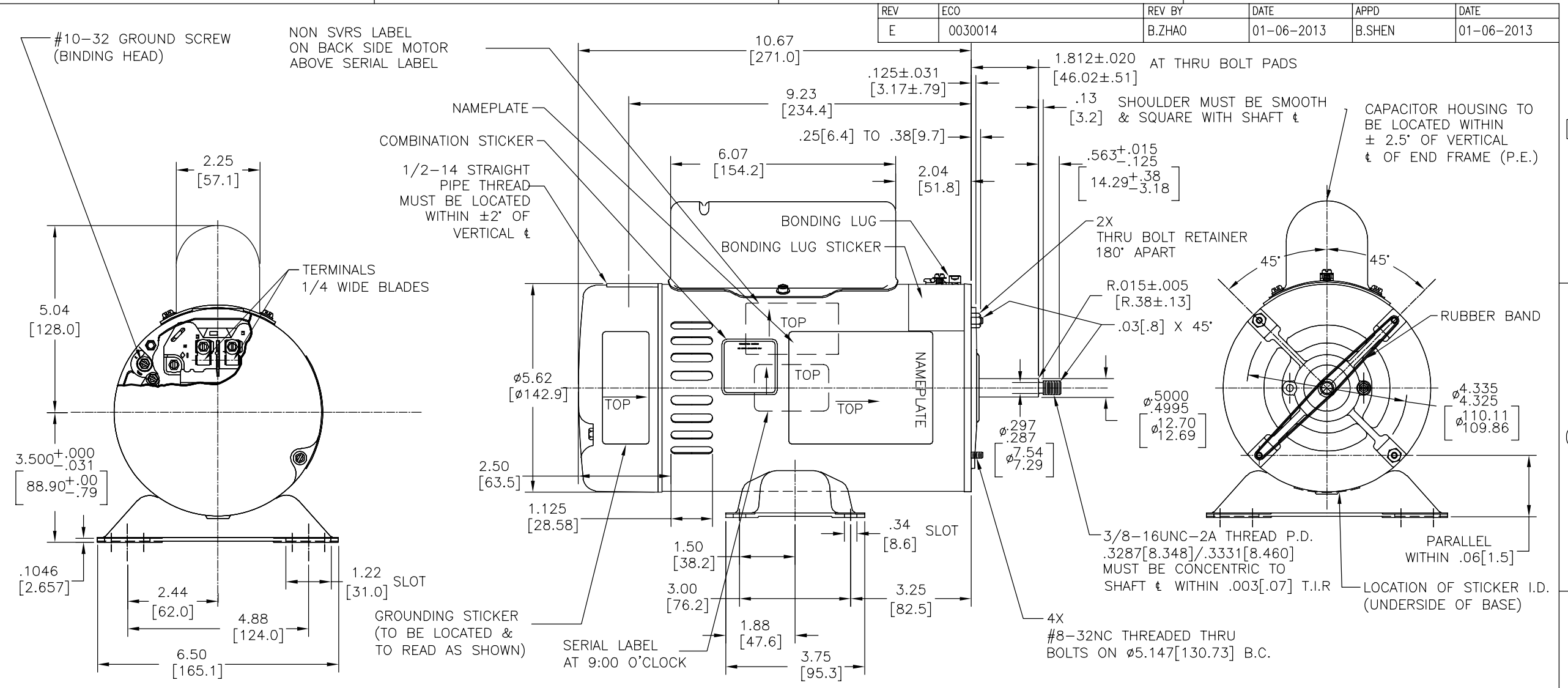


REV	ECO	REV BY	DATE	APPD	DATE
E	0030014	B.ZHAO	01-06-2013	B.SHEN	01-06-2013

D  
C  
B  
A



NAMEPLATE DATA	EXTERNAL CONNECTION DIAGRAM	NOTES
MODEL: K48N2A4C2A1 CUST PN: SDS1252 HP: 2.5/.25 SF: 1.0 ROT: CCWPE RPM: 3450/1725 TYPE: F/C CODE: H FORM: FRAME: 56Z VOLTS: 230 AMPS: 10.7/3.0 MAX AMPS: SF AMPS: - PH: 1 HZ: 60 INS: F AMB: 50 DUTY: CONT ENCLOSURE: ODP THERMALLY PROTECTED		<ol style="list-style-type: none"> <li>FINISH PAINT TO BE SATIN BLACK WITH SHAFT END-FRAME AS BRIGHT ALUMINUM.</li> <li>7/16" WRENCH FLATS ON SHAFT FOR ACCESS TO THIS WRENCH FLAT REMOVE END COVER.</li> <li>CARBON STEEL SHAFT EXT.</li> <li>LIMITS ON AMPLITUDE OF VIBRATION MEASURED AT BEARING HOUSING = .001[.02]</li> <li>MAX. END PLAY LESS THAN .005[.12]</li> </ol>

PERFORMANCE CURVE	APPROVED SAMPLE	GEOMETRIC CHARACTERISTICS & SYMBOLS	UNLESS OTHERWISE SPECIFIED DIM. TOLERANCES ARE AS FOLLOWS:	DR BY: WILL 09-23-2003
K48N2W15		□ FLATNESS - STRAIGHTNESS / ANGULARITY ⊥ PERPENDICULARITY (SQUARENESS) // PARALLELISM ○ ROUNDNESS (CIRCULARITY) ⌀ CYLINDRICITY △ PROFILE OF ANY SURFACE ⤴ PROFILE OF ANY LINE ↗ RUNOUT ⊕ TRUE POSITION ⊙ CONCENTRICITY = SYMMETRY	INCH ±.1 ±.02 ±.005 ±.0005 mm ±0.5 ±0.13 ±0.013 ANG. ±.50 DEG REMOVE BURRS & BREAK SHARP EDGES: INCH .003-.015 mm 0.1-0.4 CORNER FILLETS TO: INCH .020 mm 0.5 MACHINE SURFACES: INCH 125 mm 3.2	APPD: D.FOX 01-19-2004 THIRD ANGLE PROJECTION EDS DATE 11-11-2011 FORMAT REV H
UL COMPONENT	CSA	ASME Y14.5M 1994	METRIC DIMS. SHOWN IN [BRACKETS]	REGAL REGAL-BELOIT CORPORATION DESCRIPTION MODEL-PFHP-48FR OUTLINE SIZE C DWG NO SDS1252 SCALE NONE SHEET 1
FILE# CCN# FILE# GUIDE#				CONFIDENTIAL: THIS DRAWING AND ITS INFORMATION ARE THE EXCLUSIVE AND CONFIDENTIAL PROPERTY OF REGAL-BELOIT CORPORATION AND ARE NOT TO BE DISCLOSED, DUPLICATED, DISTRIBUTED OR OTHERWISE USED WITHOUT THE WRITTEN CONSENT OF REGAL-BELOIT CORPORATION. -ALL RIGHTS RESERVED.
E46412 PRG2 PENDING PENDING				
CUSTOMER	DISTRIBUTION SERVICE			

4

3

2

1

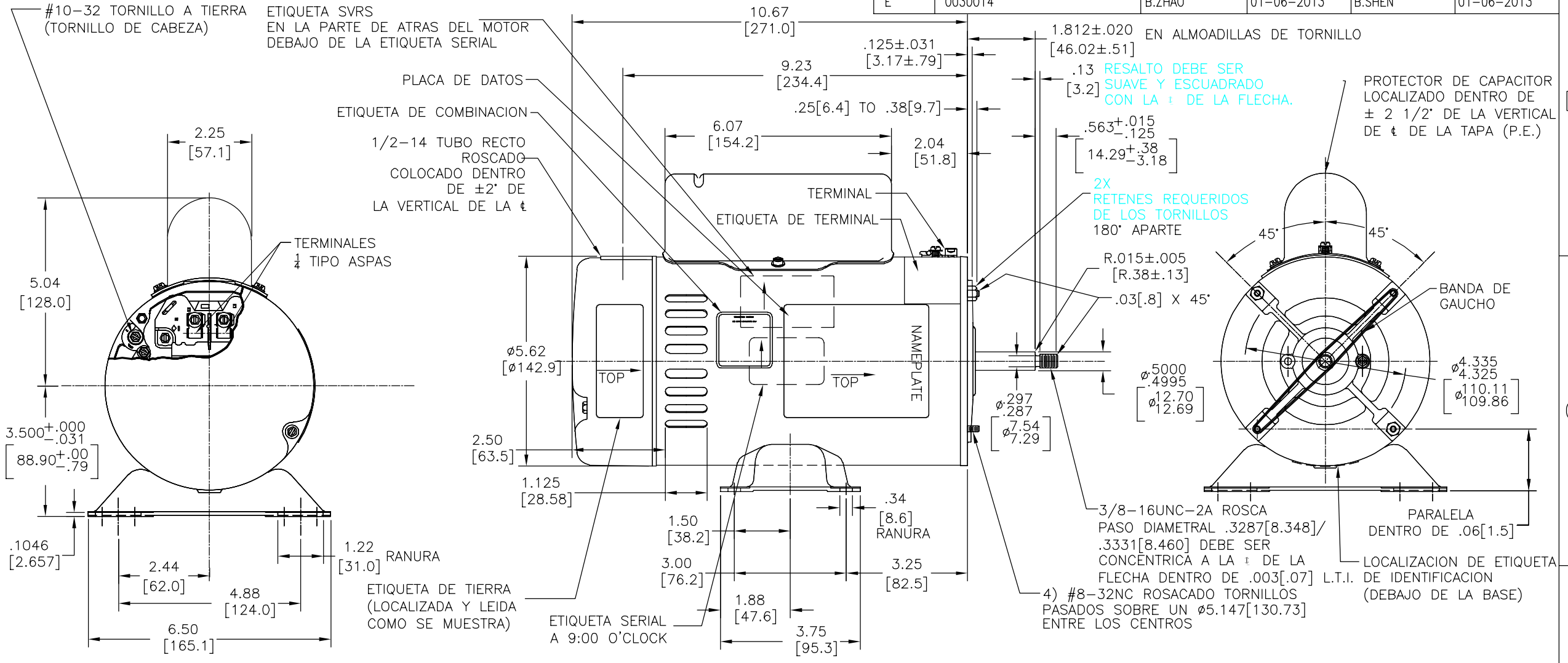
4

3

2

1

REVISION:	ECO	REVISADO POR:	FECHA:	APROBADO POR:	FECHA:
E	0030014	B.ZHAO	01-06-2013	B.SHEN	01-06-2013



NAMEPLATE DATA	EXTERNAL CONNECTION DIAGRAM	NOTES
MODEL: K48N2A4C2A1 CUST PN: SDS1252 HP: 2.5/.25 SF: 1.0 ROT: CCWPE RPM: 3450/1725 TYPE: F/C CODE: H FORM: FRAME: 56Z VOLTS: 230 AMPS: 10.7/3.0 MAX AMPS: SF AMPS: - PH: 1 HZ: 60 INS: F AMB: 50 DUTY: CONT ENCLOSURE: ODP THERMALLY PROTECTED		<ol style="list-style-type: none"> <li>ACABADO DE PINTURA ES NEGRO SATINADO CON FLECHA Y TAPA EN ALUMINIO BRILLANTE.</li> <li>LLAVES PLANAS DE 7/16" SOBRE LA FLECHA PARA ACCESO A ESTA LLAVE PLANA REMOVER LA CUBIERTA.</li> <li>FLECHA DE ACERO AL CARBON.</li> <li>LIMITES DE AMPLITUD DE VIBRACION MEDIDOS EN LA CAVIDAD DEL BALERO = .001[.02].</li> <li>JUEGO MAXIMO MENOR A .005[.12]</li> </ol>

PERFORMANCE CURVE	APPROVED SAMPLE	CARACTERISTICAS DE GEOMETRIA Y SIMBOLOS	A MENOS QUE SE ESPECIFIQUE DE OTRA MANERA, LAS TOLERANCIAS DE LAS DIMS; SON LAS SIGUIENTES:	DIBUJADO POR: WILL	09-23-2003	<b>REGAL-BELOIT CORPORATION</b> DESCRIPCION: MODEL-PFHP-48FR OUTLINE TAMAÑO: C NUMERO DE DIBUJO: SDS1252 ESCALA: NONE HOJA: 1
K48N2W15	CSA	□ PLANICIDAD - RECTITUD < ANGULARIDAD ⊥ PERPENDICULARIDAD (A ESCUADRA) // PARALELISMO ○ REDONDEZ (CIRCULARIDAD) ∅ CILINDRICIDAD △ PERFIL DE CUALQUIER SUPERFICIE ↗ VARIACION ⊕ POSICION REAL ⊙ CONCENTRICIDAD = SIMETRIA	PULG ±.1 ±.02 ±.005 ±.0005 mm ±0.5 ±0.13 ±0.013 ANG. ± 50 GRADOS ELIMINAR REBABAS Y ORILLAS FILOSAS DEL BORDE. PULG .003-.015 mm 0.1-0.4 FILETEAR ESQUINA: PULG .020 mm 0.5 MAQUINAR SUPERFICIES PULG 125 mm 3.2 DIMS METRICAS MOSTRADAS [PARENTESIS]	APROBADO POR: D.FOX 01-19-2004 TERCER ANGULO DE PROYECCION FECHA EDS: 11-11-2011 REV. FORMATO: H	CONFIDENCIAL: ESTE DIBUJO Y SU INFORMACION SON PROPIEDAD DE USO EXCLUSIVO Y CONFIDENCIAL DE REGAL-BELOIT CORPORATION. Y NO DEBERAN SER REVELADOS, DUPLICADOS, DISTRIBUIDOS O USARSE DE OTRA MANERA SIN EL CONSENTIMIENTO ESCRITO DE REGAL-BELOIT CORPORATION. -TODOS LOS DERECHOS RESERVADOS.	
UL COMPONENT						
FILE#	CCN#	FILE#	GUIDE#			
E46412	PRGY2	PENDING	PENDING			
CUSTOMER	DISTRIBUTION SERVICE					

4

3

2

1