

4

3

2

1

D

C

B

A

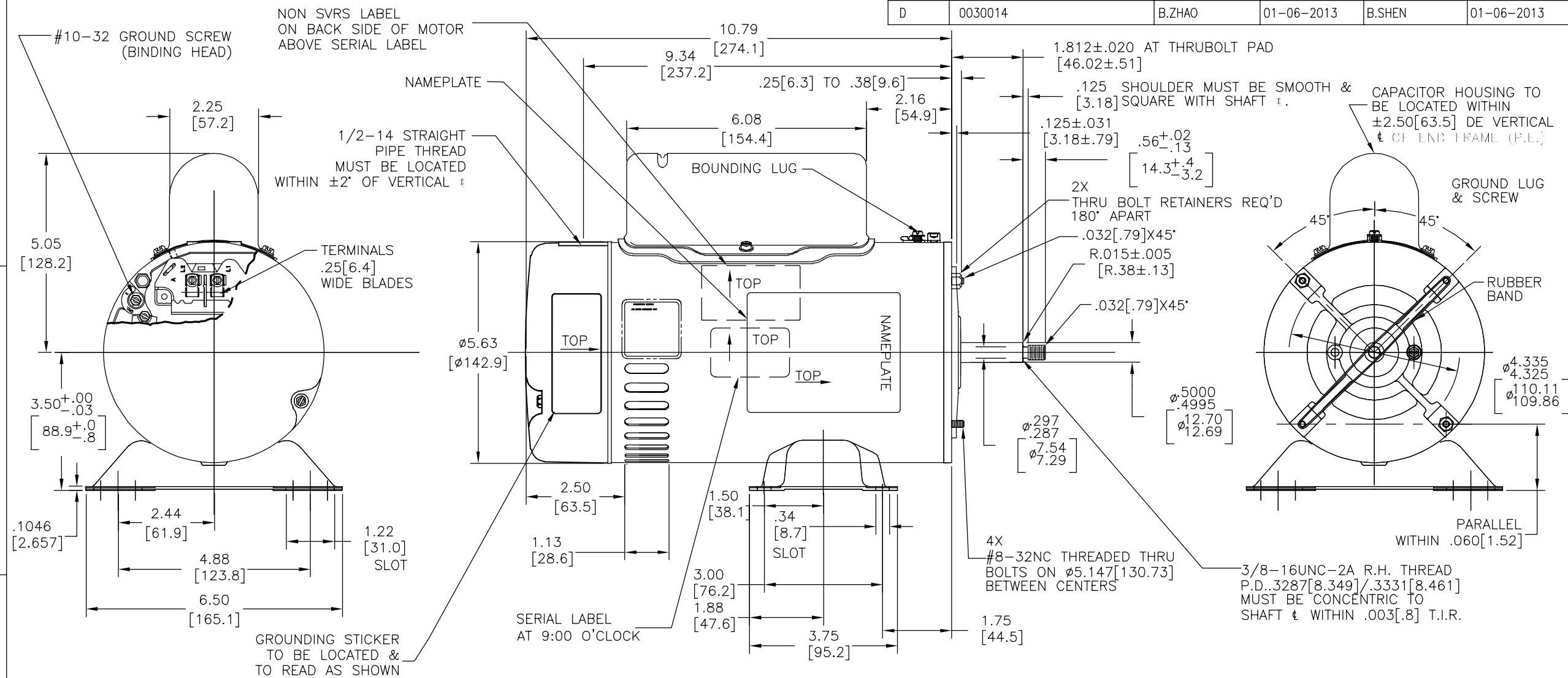
D

C

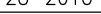
B

A

REV	ECO	REV BY	DATE	APPD	DATE
D	0030014	B.ZHAO	01-06-2013	B.SHEN	01-06-2013



NAMEPLATE DATA	EXTERNAL CONNECTION DIAGRAM	NOTES
MODEL: K48M2A4A1 CUST PN: SDS1152 HP: 1.5/.19 SF: 1.0 ROT: CCWPE RPM: 3450/1725 TYPE: F/C CODE: A FORM: - FRAME: 56Z VOLTS: 230 AMPS: 7.2/2.4 MAX AMPS: - SF AMPS: - PH: 1 HZ: 60 INS: F AMB: 50 DUTY: CONT ENCLOSURE: - THERMALLY PROTECTED	<p>GRD GREEN (GROUND)</p> <p>L2 = LINE L1 = HI SPEED A = LO SPEED</p> <p>USE COPPER CONDUCTORS ONLY. INSTALL MOTOR WITH VENTS DOWN. ACCEPTABLE FOR FIELD WIRING</p>	1. FINISH PAINT TO BE SATIN BLACK 2. .44[11.2] WRENCH FLATS ON SHAFT FOR ACCESS TO THIS WRENCH FLAT REMOVE END COVER. 3. CARBON STEEL SHAFT 4. LIMITS ON AMPLITUDE OF VIBRATION MEASURED AT BEARING HOUSING=.001[.02]. 5. MAX. END PLAY LESS THAN .005[.13] 6. MOTOR ASSEMBLY(REF): 629149-002

PERFORMANCE CURVE		APPROVED SAMPLE		<div>GEOMETRIC CHARACTERISTICS &amp; SYMBOLS ∠ FLATNESS — STRAIGHTNESS ∠ ANGULARITY ⊥ PERPENDICULARITY (SQUARENESS) // PARALLELISM ○ ROUNDNESS (CIRCULARITY) ⊘ CYLINDRICITY △ PROFILE OF ANY SURFACE ⌒ PROFILE OF ANY LINE ⌚ RUNOUT ⊕ TRUE POSITION ◎ CONCENTRICITY ≡ SYMMETRY</div> <div>ASME Y14.5M 1994</div>		<div>UNLESS OTHERWISE SPECIFIED DIM. TOLERANCES ARE AS FOLLOWS: INCH X XX XXX XXXX mm ±.1 ±.02 ±.005 ±.0005 mm ±0.5 ±0.13 ±0.013 ANG. ±.50 DEG REMOVE BURRS &amp; BREAK SHARP EDGES: INCH .003-.015 mm 0.1-0.4 CORNER FILLETS TO: INCH .020 mm 0.5 MACHINE SURFACES: INCH 125 mm 3.2</div> <div>METRIC DIMS. SHOWN IN [BRACKETS]</div>		DR BY:		TH		10-28-2010		<div>REGAL REGAL-BELOIT CORPORATION</div> <div>DESCRIPTION</div> <div>MODEL-PFHP-48FR OUTLINE</div> <div>SIZE C DWG NO SDS1152</div> <div>SCALE NONE SHEET 1</div>	
K48M2W14		—						APPD:		TZ		10-28-2010			
UL COMPONENT		CSA						THIRD ANGLE PROJECTION				EDS DATE 11-11-2011 FORMAT REV H			
FILE#		CCN#						CONFIDENTIAL: THIS DRAWING AND ITS INFORMATION ARE THE EXCLUSIVE AND CONFIDENTIAL PROPERTY OF REGAL-BELOIT CORPORATION AND ARE NOT TO BE DISCLOSED, DUPLICATED, DISTRIBUTED OR OTHERWISE USED WITHOUT THE WRITTEN CONSENT OF REGAL-BELOIT CORPORATION. -ALL RIGHTS RESERVED.							
E46412		PRGY2													
CUSTOMER		DISTRIBUTION SERVICE													

4

3

2

1

4

3

2

1

D

C

B

A

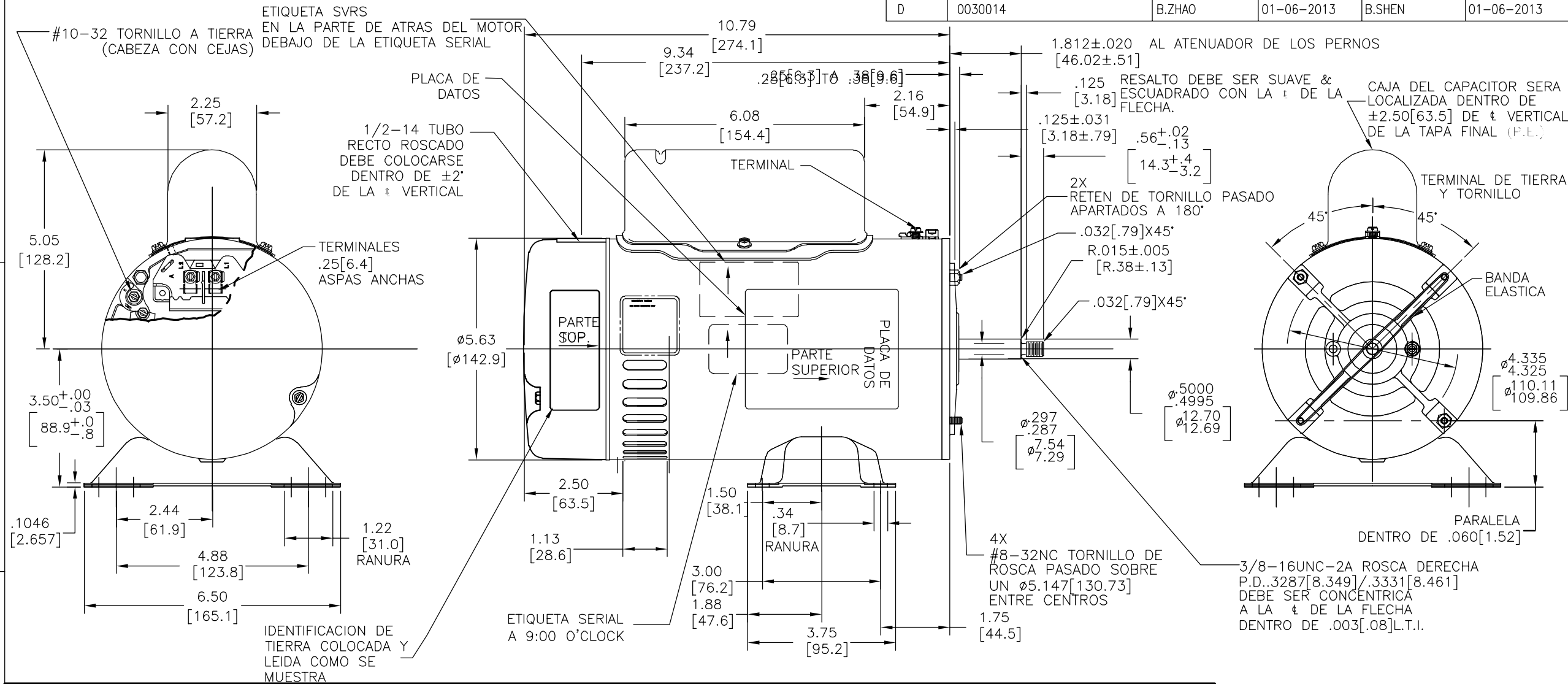
D

C


B

A

REVISION:	ECO	REVISADO POR:	FECHA:	APROBADO POR:	FECHA:
D	0030014	B.ZHAO	01-06-2013	B.SHEN	01-06-2013



NAMEPLATE DATA	EXTERNAL CONNECTION DIAGRAM	NOTES
MODEL: K48M2A4A1 CUST PN: SDS1152 HP: 1.5/.19 SF: 1.0 ROT: CCWPE RPM: 3450/1725 TYPE: F/C FORM: - VOLTS: 230 AMPS: 7.2/2.4 MAX AMPS: - SF AMPS: - PH: 1 INS: F DUTY: CONT ENCLOSURE: - THERMALLY PROTECTED	<p>GRD GREEN (GROUND)</p> <p>L2 = LINE L1 = HI SPEED A = LO SPEED</p> <p>USE COPPER CONDUCTORS ONLY. INSTALL MOTOR WITH VENTS DOWN. ACCEPTABLE FOR FIELD WIRING</p>	1. EL ACABADO DE LA PINTURA DEBE SER NEGRO SATIN 2. PLANOS DE LA FLECHA DE .44[11.2] PARA ACCESO DE HERRAMIENTA QUITAR LA CUBIERTA FINAL. 3. FLECHA DE ACERO AL CARBON 4. LIMITES PARA AMPLITUD DE VIBRACION MEDIDA EN LA CAVIDAD DEL BALERO=.001[.03]. 5. MAX. JUEGO AXIAL MENOS DE .005[.13]

PERFORMANCE CURVE		APPROVED SAMPLE		CARACTERISTICAS DE GEOMETRIA Y SIMBOLOS		A MENOS QUE SE ESPECIFIQUE DE OTRA MANERA, LAS TOLERANCIAS DE LAS DIMS: SON LAS SIGUIENTES:		DIBUJADO POR: TH		10-28-2010		REGAL REGAL-BELOIT CORPORATION	
K48M2W14		-		✓ PLANICIDAD - RECTITUD ∠ ANGULARIDAD ⊥ PERPENDICULARIDAD (A ESCUADRA) // PARALELISMO ○ REDONDEZ (CIRCULARIDAD) ⊘ CILINDRICIDAD △ PERFIL DE CUALQUIER SUPERFICIE ▽ PERFIL DE CUALQUIER LINEA ↗ VARIACION ⊕ POSICION REAL ◎ CONCENTRICIDAD ≡ SIMETRIA		X XX XXX XXXX PULG ±.1 ±.02 ±.005 ±.0005 mm ±0.5 ±0.13 ±0.013 ANG. ±50 GRADOS ELIMINAR REBABAS Y ORILLAS FILOSAS DEL BORDE. PULG .003-.015 mm 0.1-0.4 FILETEAR ESQUINA: PULG .020 mm 0.5 MAQUINAR SUPERFICIES PULG 125 mm 3.2		APROBADO POR: TZ		10-28-2010			
UL COMPONENT		CSA		ASME Y14.5M 1994		DIMS METRICAS MOSTRADAS [PARENTESIS]		TERCER ANGULO DE PROYECCION		FECHA EDS: 11-11-2011		DESCRIPCION:  MODEL-PFHP-48FR OUTLINE	
FILE#	CCN#	FILE#	GUIDE#							REV. FORMATO: H			
E46412	PRGY2	-	-					CONFIDENCIAL: ESTE DIBUJO Y SU INFORMACION SON PROPIEDAD DE USO EXCLUSIVO Y CONFIDENCIAL DE REGAL-BELOIT CORPORATION. Y NO DEBERAN SER REVELADOS, Duplicados, DISTRIBUIDOS O USARSE DE OTRA MANERA SIN EL CONSENTIMIENTO ESCRITO DE REGAL-BELOIT CORPORATION. -TODOS LOS DERECHOS RESERVADOS.		TAMAÑO: C		NUMERO DE DIBUJO: SDS1152	
CUSTOMER		DISTRIBUTION SERVICE								ESCALA: NONE			