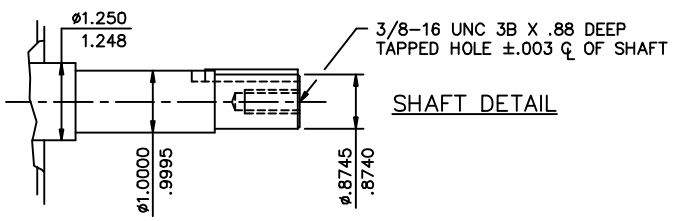


(4) 3/8-16 UNC-2B X .56 DEEP ON A Ø5.875 B.C.

FRAME	"C"	"L"	"AD"
800	13.82	3.82	4.13
850	14.32	4.32	4.63
900	14.82	4.82	5.13
950	15.32	5.32	5.63
1000	15.82	5.82	6.13
1050	16.32	6.32	6.63
1100	16.82	6.82	7.13
1150	17.32	7.32	7.63
1200	17.82	7.82	8.13

Ø1.13 KNOCKOUTS (3) REQUIRED



GASKETS THROUGHOUT
 MAXIMUM FACE RUNOUT TO BE .004 T.I.R.
 MAXIMUM PILOT ECCENTRICITY TO BE .004 T.I.R.
 PERMISSIBLE SHAFT RUNOUT TO BE .002 T.I.R.

		TOLERANCES UNLESS SPECIFIED			DRAWN GR 07/25/12
		DEC.	INCHES		CHK VS 07/25/12
		.X	±.1	TITLE OUTLINE- 180T FRAME DRIP PROOF- RIGID	APPD
		.XX	±.03		SCALE 1-2
		.XXX	±.005		REF 035557
		.XXXX	±.0005		FMF
NO.	REVISION	BY & DATE	CHK	ANG	FINISH
THIS DRAWING IN DESIGN AND DETAIL IS OUR PROPERTY AND MUST NOT BE USED EXCEPT IN CONNECTION WITH OUR WORK ALL RIGHTS OF DESIGN AND INVENTION ARE RESERVED THIS IS AN ELECTRONICALLY GENERATED DOCUMENT - DO NOT SCALE THIS PRINT			RFP	CAD FILE	035557CY
			DIST	SIZE	DRAWING NO.
				B	035557CY
					REV.