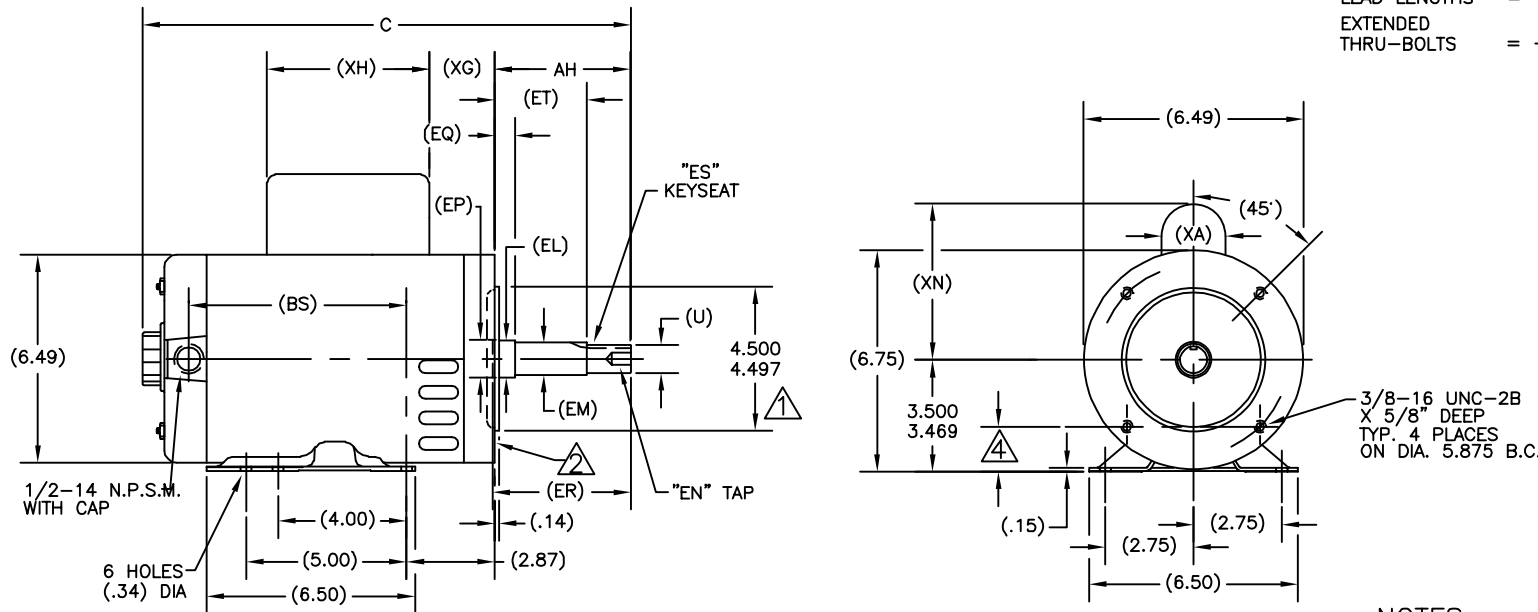


MAGNETEK
 INTEGRAL HORSEPOWER MOTORS
 SINGLE PHASE, CAPACITOR START, INDUCTION RUN
 NEMA TYPE "JM" FACE MOUNTED CLOSE COUPLED PUMP
 BALL BEARING, OPEN
 STEEL SHELL 143T AND STEEL SHELL 145T

ALL DIMENSIONS SHOWN IN PARENTHESIS ARE REFERENCE DIMENSIONS. ALL OTHER DIMENSIONS ARE TOLERANCED PER THE FOLLOWING CHART UNLESS OTHERWISE SPECIFIED.

"C" DIM. = +/- .055
 SHAFT EXT. = +/- .034
 LEAD LENGTHS = +/- 1.00
 EXTENDED THRU-BOLTS = +/- .050



FRAME	TYPE	SIZE	"EN TAP"		"ES KEYSEAT"			C	(BS)	(EP)	(EL)	(EM)	(U)	(EQ)	(ET)	(ER)	(AH)	(XA)	(XG)	(XH)	(XN)
			MAX. DRILL DEPTH	BOLT PENE.	USABLE LGTH.	WIDTH	DEPTH														
M143JM	CS	3/8-16UNC-2B	1.13	.75	1.63	3/16	3/32	14.30	5.23	1.178	1.156	1.0000	.8745	.640	2.890	4.250	4.281	2.01	3.75	4.06	5.20
M145JM	CS	3/8-16UNC-2B	1.13	.75	1.63	3/16	3/32	14.80	5.73	1.178	1.156	1.0000	.8745	.640	2.890	4.250	4.281	2.01	4.25	4.06	5.20
N143JM	CS	3/8-16UNC-2B	1.13	.75	1.63	3/16	3/32	14.80	5.73	1.178	1.156	1.0000	.8745	.640	2.890	4.250	4.281	2.01	4.25	4.06	5.20
N145JM	CS	3/8-16UNC-2B	1.13	.75	1.63	3/16	3/32	14.80	5.73	1.178	1.156	1.0000	.8745	.640	2.890	4.250	4.281	2.01	4.25	4.06	5.20
P143JM	CS	3/8-16UNC-2B	1.13	.75	1.63	3/16	3/32	15.55	6.48	1.178	1.156	1.0000	.8745	.640	2.890	4.250	4.281	2.01	5.00	4.06	5.20
P145JM	CS	3/8-16UNC-2B	1.13	.75	1.63	3/16	3/32	15.55	6.48	1.178	1.156	1.0000	.8745	.640	2.890	4.250	4.281	2.01	5.00	4.06	5.20
R143JM	CS	3/8-16UNC-2B	1.13	.75	1.63	3/16	3/32	16.30	7.23	1.178	1.156	1.0000	.8745	.640	2.890	4.250	4.281	2.01	5.75	4.06	5.20
R145JM	CS	3/8-16UNC-2B	1.13	.75	1.63	3/16	3/32	16.30	7.23	1.178	1.156	1.0000	.8745	.640	2.890	4.250	4.281	2.01	5.75	4.06	5.20
M143JP	CS	3/8-16UNC-2B	1.13	.75	1.63	3/16	3/32	17.35	5.23	1.178	1.156	1.0000	.8745	1.577	5.952	7.312	7.344	2.01	3.75	4.06	5.20
M145JP	CS	3/8-16UNC-2B	1.13	.75	1.63	3/16	3/32	17.35	5.23	1.178	1.156	1.0000	.8745	1.577	5.952	7.312	7.344	2.01	3.75	4.06	5.20
N143JP	CS	3/8-16UNC-2B	1.13	.75	1.63	3/16	3/32	17.85	5.73	1.178	1.156	1.0000	.8745	1.577	5.952	7.312	7.344	2.01	4.25	4.06	5.20
N145JP	CS	3/8-16UNC-2B	1.13	.75	1.63	3/16	3/32	17.85	5.73	1.178	1.156	1.0000	.8745	1.577	5.952	7.312	7.344	2.01	4.25	4.06	5.20
P143JP	CS	3/8-16UNC-2B	1.13	.75	1.63	3/16	3/32	18.60	7.23	1.178	1.156	1.0000	.8745	1.577	5.952	7.312	7.344	2.01	5.00	4.06	5.20
P145JP	CS	3/8-16UNC-2B	1.13	.75	1.63	3/16	3/32	18.60	7.23	1.178	1.156	1.0000	.8745	1.577	5.952	7.312	7.344	2.01	5.00	4.06	5.20

- NOTES:
- 1 PILOT DIAMETER IS CONCENTRIC WITH SHAFT CENTERLINE WITHIN .004 T.I.R.
 - 2 FACE OF MOUNTING FLANGE IS PERPENDICULAR TO SHAFT CENTERLINE WITHIN .004 T.I.R.
 - 3 SHAFT RUNOUT NOT TO EXCEED .002 T.I.R.
 - 4 FOR RIGID BASE ONLY: THE 2 BOTTOM HOLES IN THE MOUNTING FLANGE ARE PARALLEL FROM THE BOTTOM OF THE FEET WITHIN .030
 - 5 END PLAY NOT TO EXCEED .010 MEASURED WITH NO THRUST
 - 6 BASE ALSO INCLUDES STANDARD 56 H MOUNTING.

REVISIONS

1	EAA	E10110	
2	REDRAWN FROM CADD TO EDITOR.	ALB	10/14/92
3	REDRAWN IN ACAD	02/28/96	AMB
4	DEZ159	ERROR CORR.	FRAME DESIGNATION
		VDW	11-12-98

PROPRIETARY NOTICE: THIS DRAWING IS THE PROPERTY OF MAGNETEK INC. AND CONTAINS PROPRIETARY INFORMATION. IT IS TO BE USED ONLY FOR THE PURPOSES SPECIFIED IN THE ORDER. IT IS NOT TO BE REPRODUCED, COPIED, OR DISCLOSED TO ANY OTHER PARTY WITHOUT THE WRITTEN PERMISSION OF MAGNETEK INC.

THIRD ANGLE PROJECTION

MagneTek 204 Red Road
McMinnville, TN 37110

TITLE: 140T DWG 0-LINE BB OP/EN

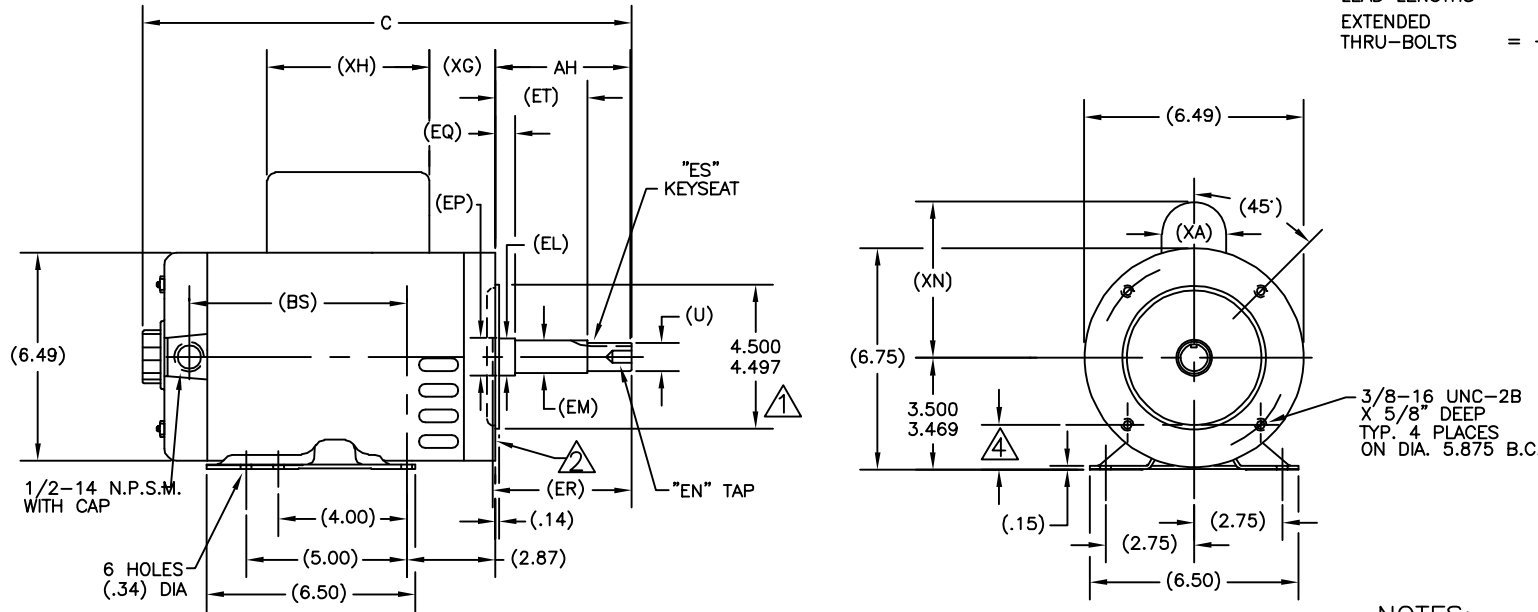
DRN: LDH	CHK: MH	CLASS NO:	SIZE:	DRG. NO.:
04/03/90	04/09/90	1920	C	
SCALE: NONE	CONTROL: 5	SHT: 1	114575	

THIS IS AN AUTOCAD DRAWING. DO NOT CHANGE MANUALLY.

MAGNETEK
 INTEGRAL HORSEPOWER MOTORS
 SINGLE PHASE, CAPACITOR START, INDUCTION RUN
 NEMA TYPE "JM" FACE MOUNTED CLOSE COUPLED PUMP
 BALL BEARING, OPEN
 STEEL SHELL 143T AND STEEL SHELL 145T

ALL DIMENSIONS SHOWN IN PARENTHESIS ARE REFERENCE DIMENSIONS. ALL OTHER DIMENSIONS ARE TOLERANCED PER THE FOLLOWING CHART UNLESS OTHERWISE SPECIFIED.

"C" DIM. = +/- .055
 SHAFT EXT. = +/- .034
 LEAD LENGTHS = +/- 1.00
 EXTENDED THRU-BOLTS = +/- .050



FRAME	TYPE	SIZE	"EN TAP"		"ES KEYSEAT"			C	(BS)	(EP)	(EL)	(EM)	(U)	(EQ)	(ET)	(ER)	(AH)	(XA)	(XG)	(XH)	(XN)
			MAX. DRILL DEPTH	BOLT PENE.	USABLE LGTH.	WIDTH	DEPTH														
M143JM	CS	3/8-16UNC-2B	1.13	.75	1.63	3/16	3/32	14.30	5.23	1.178	1.156	1.0000	.8745	.640	2.890	4.250	4.281	2.01	3.75	4.06	5.20
M145JM	CS	3/8-16UNC-2B	1.13	.75	1.63	3/16	3/32	14.80	5.73	1.178	1.156	1.0000	.8745	.640	2.890	4.250	4.281	2.01	4.25	4.06	5.20
N143JM	CS	3/8-16UNC-2B	1.13	.75	1.63	3/16	3/32	14.80	5.73	1.178	1.156	1.0000	.8745	.640	2.890	4.250	4.281	2.01	4.25	4.06	5.20
N145JM	CS	3/8-16UNC-2B	1.13	.75	1.63	3/16	3/32	14.80	5.73	1.178	1.156	1.0000	.8745	.640	2.890	4.250	4.281	2.01	4.25	4.06	5.20
P143JM	CS	3/8-16UNC-2B	1.13	.75	1.63	3/16	3/32	15.55	6.48	1.178	1.156	1.0000	.8745	.640	2.890	4.250	4.281	2.01	5.00	4.06	5.20
P145JM	CS	3/8-16UNC-2B	1.13	.75	1.63	3/16	3/32	15.55	6.48	1.178	1.156	1.0000	.8745	.640	2.890	4.250	4.281	2.01	5.00	4.06	5.20
R143JM	CS	3/8-16UNC-2B	1.13	.75	1.63	3/16	3/32	16.30	7.23	1.178	1.156	1.0000	.8745	.640	2.890	4.250	4.281	2.01	5.75	4.06	5.20
R145JM	CS	3/8-16UNC-2B	1.13	.75	1.63	3/16	3/32	16.30	7.23	1.178	1.156	1.0000	.8745	.640	2.890	4.250	4.281	2.01	5.75	4.06	5.20
M143JP	CS	3/8-16UNC-2B	1.13	.75	1.63	3/16	3/32	17.35	5.23	1.178	1.156	1.0000	.8745	1.577	5.952	7.312	7.344	2.01	3.75	4.06	5.20
M145JP	CS	3/8-16UNC-2B	1.13	.75	1.63	3/16	3/32	17.35	5.23	1.178	1.156	1.0000	.8745	1.577	5.952	7.312	7.344	2.01	3.75	4.06	5.20
N143JP	CS	3/8-16UNC-2B	1.13	.75	1.63	3/16	3/32	17.85	5.73	1.178	1.156	1.0000	.8745	1.577	5.952	7.312	7.344	2.01	4.25	4.06	5.20
N145JP	CS	3/8-16UNC-2B	1.13	.75	1.63	3/16	3/32	17.85	5.73	1.178	1.156	1.0000	.8745	1.577	5.952	7.312	7.344	2.01	4.25	4.06	5.20
P143JP	CS	3/8-16UNC-2B	1.13	.75	1.63	3/16	3/32	18.60	7.23	1.178	1.156	1.0000	.8745	1.577	5.952	7.312	7.344	2.01	5.00	4.06	5.20
P145JP	CS	3/8-16UNC-2B	1.13	.75	1.63	3/16	3/32	18.60	7.23	1.178	1.156	1.0000	.8745	1.577	5.952	7.312	7.344	2.01	5.00	4.06	5.20

- NOTES:
- 1 PILOT DIAMETER IS CONCENTRIC WITH SHAFT CENTERLINE WITHIN .004 T.I.R.
 - 2 FACE OF MOUNTING FLANGE IS PERPENDICULAR TO SHAFT CENTERLINE WITHIN .004 T.I.R.
 - 3 SHAFT RUNOUT NOT TO EXCEED .002 T.I.R.
 - 4 FOR RIGID BASE ONLY: THE 2 BOTTOM HOLES IN THE MOUNTING FLANGE ARE PARALLEL FROM THE BOTTOM OF THE FEET WITHIN .030
 - 5 END PLAY NOT TO EXCEED .010 MEASURED WITH NO THRUST
 - 6 BASE ALSO INCLUDES STANDARD 56 H MOUNTING.

REVISIONS

1	EAA	E10110	
2	REDRAWN FROM CADD TO EDITOR.	ALB	10/14/92
3	REDRAWN IN ACAD	02/28/96	AMB
4	DEZ159	ERRATA CORR.	FRAME DESIGNATION
		VDW	11-12-98

PROPRIETARY NOTICE: THIS DRAWING IS THE PROPERTY OF MAGNETEK, INC. AND CONTAINS PROPRIETARY INFORMATION. IT IS TO BE KEPT IN CONFIDENCE AND NOT TO BE REPRODUCED OR COPIED IN ANY MANNER WITHOUT THE WRITTEN PERMISSION OF MAGNETEK, INC. THE INFORMATION CONTAINED HEREIN IS UNCLASSIFIED EXCEPT WHERE SHOWN OTHERWISE BY MAGNETEK, INC.

THIRD ANGLE PROJECTION

MagneTek 204 Red Road
McMinnville, TN 37110

TITLE
140T DWG 0-LINE BB OP/EN

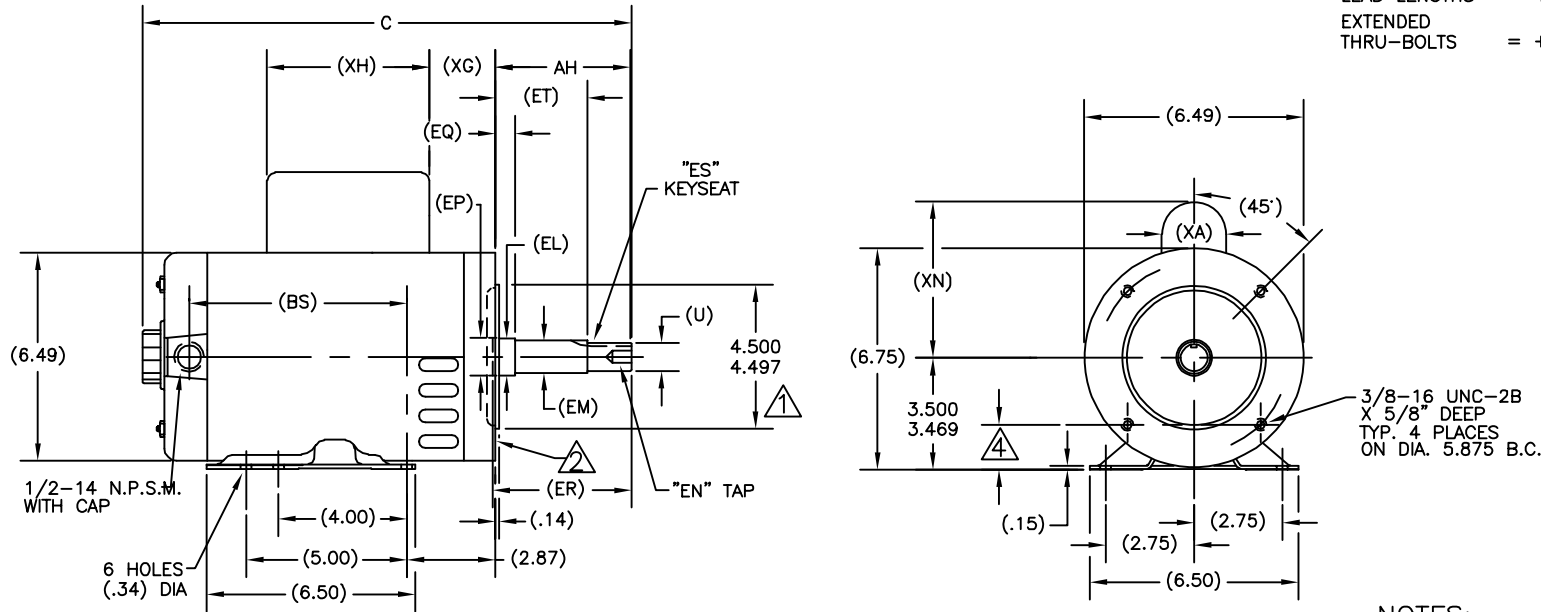
DRW. LDH	CHK. MH	CLASS NO.	SIZE	DRG. NO.
04/03/90	04/09/90	1920	C	
SCALE	CONTROL	SHT	114575	
NONE	5	1		

THIS IS AN AUTOCAD DRAWING.
DO NOT CHANGE MANUALLY.

MAGNETEK
 INTEGRAL HORSEPOWER MOTORS
 SINGLE PHASE, CAPACITOR START, INDUCTION RUN
 NEMA TYPE "JM" FACE MOUNTED CLOSE COUPLED PUMP
 BALL BEARING, OPEN
 STEEL SHELL 143T AND STEEL SHELL 145T

ALL DIMENSIONS SHOWN IN PARENTHESIS ARE REFERENCE DIMENSIONS. ALL OTHER DIMENSIONS ARE TOLERANCED PER THE FOLLOWING CHART UNLESS OTHERWISE SPECIFIED.

"C" DIM. = +/- .055
 SHAFT EXT. = +/- .034
 LEAD LENGTHS = +/- 1.00
 EXTENDED THRU-BOLTS = +/- .050



FRAME	TYPE	SIZE	"EN TAP"		"ES KEYSEAT"			C	(BS)	(EP)	(EL)	(EM)	(U)	(EQ)	(ET)	(ER)	(AH)	(XA)	(XG)	(XH)	(XN)
			MAX. DRILL DEPTH	BOLT PENE.	USABLE LGTH.	WIDTH	DEPTH														
M143JM	CS	3/8-16UNC-2B	1.13	.75	1.63	3/16	3/32	14.30	5.23	1.178	1.156	1.0000	.8745	.640	2.890	4.250	4.281	2.01	3.75	4.06	5.20
M145JM	CS	3/8-16UNC-2B	1.13	.75	1.63	3/16	3/32	14.80	5.73	1.178	1.156	1.0000	.8745	.640	2.890	4.250	4.281	2.01	4.25	4.06	5.20
N143JM	CS	3/8-16UNC-2B	1.13	.75	1.63	3/16	3/32	14.80	5.73	1.178	1.156	1.0000	.8745	.640	2.890	4.250	4.281	2.01	4.25	4.06	5.20
N145JM	CS	3/8-16UNC-2B	1.13	.75	1.63	3/16	3/32	14.80	5.73	1.178	1.156	1.0000	.8745	.640	2.890	4.250	4.281	2.01	4.25	4.06	5.20
P143JM	CS	3/8-16UNC-2B	1.13	.75	1.63	3/16	3/32	15.55	6.48	1.178	1.156	1.0000	.8745	.640	2.890	4.250	4.281	2.01	5.00	4.06	5.20
P145JM	CS	3/8-16UNC-2B	1.13	.75	1.63	3/16	3/32	15.55	6.48	1.178	1.156	1.0000	.8745	.640	2.890	4.250	4.281	2.01	5.00	4.06	5.20
R143JM	CS	3/8-16UNC-2B	1.13	.75	1.63	3/16	3/32	16.30	7.23	1.178	1.156	1.0000	.8745	.640	2.890	4.250	4.281	2.01	5.75	4.06	5.20
R145JM	CS	3/8-16UNC-2B	1.13	.75	1.63	3/16	3/32	16.30	7.23	1.178	1.156	1.0000	.8745	.640	2.890	4.250	4.281	2.01	5.75	4.06	5.20
M143JP	CS	3/8-16UNC-2B	1.13	.75	1.63	3/16	3/32	17.35	5.23	1.178	1.156	1.0000	.8745	1.577	5.952	7.312	7.344	2.01	3.75	4.06	5.20
M145JP	CS	3/8-16UNC-2B	1.13	.75	1.63	3/16	3/32	17.35	5.23	1.178	1.156	1.0000	.8745	1.577	5.952	7.312	7.344	2.01	3.75	4.06	5.20
N143JP	CS	3/8-16UNC-2B	1.13	.75	1.63	3/16	3/32	17.85	5.73	1.178	1.156	1.0000	.8745	1.577	5.952	7.312	7.344	2.01	4.25	4.06	5.20
N145JP	CS	3/8-16UNC-2B	1.13	.75	1.63	3/16	3/32	17.85	5.73	1.178	1.156	1.0000	.8745	1.577	5.952	7.312	7.344	2.01	4.25	4.06	5.20
P143JP	CS	3/8-16UNC-2B	1.13	.75	1.63	3/16	3/32	18.60	7.23	1.178	1.156	1.0000	.8745	1.577	5.952	7.312	7.344	2.01	5.00	4.06	5.20
P145JP	CS	3/8-16UNC-2B	1.13	.75	1.63	3/16	3/32	18.60	7.23	1.178	1.156	1.0000	.8745	1.577	5.952	7.312	7.344	2.01	5.00	4.06	5.20

- NOTES:
- 1 PILOT DIAMETER IS CONCENTRIC WITH SHAFT CENTERLINE WITHIN .004 T.I.R.
 - 2 FACE OF MOUNTING FLANGE IS PERPENDICULAR TO SHAFT CENTERLINE WITHIN .004 T.I.R.
 - 3 SHAFT RUNOUT NOT TO EXCEED .002 T.I.R.
 - 4 FOR RIGID BASE ONLY: THE 2 BOTTOM HOLES IN THE MOUNTING FLANGE ARE PARALLEL FROM THE BOTTOM OF THE FEET WITHIN .030
 - 5 END PLAY NOT TO EXCEED .010 MEASURED WITH NO THRUST
 - 6 BASE ALSO INCLUDES STANDARD 56 H MOUNTING.

REVISIONS

1	EAA	E10110	
2	REDRAWN FROM CADD TO EDITOR.	ALB	10/14/92
3	REDRAWN IN ACAD	02/28/96	AMB
4	DEZ159	ERRATA CORR.	FRAME DESIGNATION
		VDW	11-12-98

PROPRIETARY NOTICE: THIS DRAWING IS THE PROPERTY OF MAGNETEK, INC. AND CONTAINS PROPRIETARY INFORMATION. IT IS TO BE USED ONLY FOR THE PURPOSES SPECIFIED IN THE ORDER. IT IS NOT TO BE REPRODUCED, COPIED, OR TRANSMITTED IN ANY FORM OR BY ANY MEANS, ELECTRONIC OR MECHANICAL, INCLUDING PHOTOCOPYING, RECORDING, OR BY ANY INFORMATION STORAGE AND RETRIEVAL SYSTEM, WITHOUT THE WRITTEN PERMISSION OF MAGNETEK, INC.

THIRD ANGLE PROJECTION

MagneTek 204 Red Road
McMinnville, TN 37110

TITLE
140T DWG 0-LINE BB OP/EN

DRW. LDH	CHK. MH	CLASS NO.	SIZE	DRG. NO.
04/03/90	04/09/90	1920	C	
SCALE	CONTROL	SHT	114575	
NONE	5	1		

THIS IS AN AUTOCAD DRAWING.
DO NOT CHANGE MANUALLY.