

GENERAL INFORMATION:

SHAFT RUNOUT: .001[.025] T.I.R. PER INCH LENGTH OF EXTENSION.

END PLAY: .010[.254] TO .063[1.600]

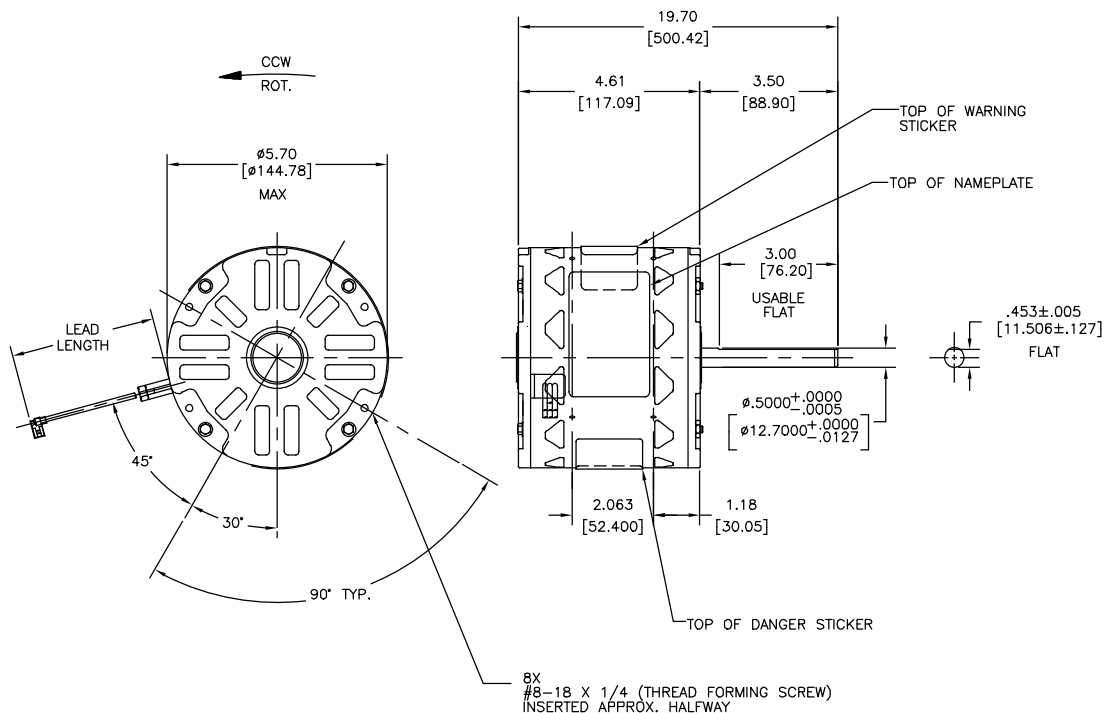
BEARINGS: SLEEVE

MOUNTING POSITION: HORIZONTAL

ELECTRICAL DATA:

OVERLOAD PROTECTOR: AUTOMATIC RESET (T.I. 7AM 036)

LEADS: NO. 18 GA., .06[1.52] THK., 105°C PVC INSUL.



NOTES:  
8X SCREWS 615982-001 TO BE PUT IN A POLYBAG.

REGAL-BELOIT CORPORATION (RBC) PROVIDES TECHNICAL ASSISTANCE TO OUR CUSTOMERS IN SEVERAL AREAS. SINCE RBC DOES NOT RECEIVE ALL DATA CONCERNING THE USE AND APPLICATION OF THE MOTOR, THE SUITABILITY OF THE MOTOR FOR THE APPLICATION MUST BE DETERMINED BY THE CUSTOMER.

DIMENSIONS WITHOUT TOLERANCES ARE FOR REFERENCE ONLY.

MAIN FRAME - OLE	OPEN
END FRAME - OLE	OPEN
MAIN FRAME - LE	OPEN
END FRAME - LE	OPEN

CUSTOMER	DISTRIBUTION SERVICE
----------	----------------------

BROWN	10/12[254/305]	.25[6.35] FLAG
BROWN	10/12[254/305]	.25[6.35] FLAG
WHITE	17/19[432/483]	.25[6.35] FLAG
BLUE	17/19[432/483]	.25[6.35] FLAG
BLACK	17/19[432/483]	.25[6.35] FLAG
YELLOW	17/19[432/483]	.25[6.35] FLAG
RED	17/19[432/483]	.25[6.35] FLAG

COLOR	LENGTH	TERMINAL OR STRIP LENGTH

LEAD DATA

DRAWING REVISION	REVISION BY	DATE
C	GELINE ZHAO	05-23-2019
ECO	KEYUN.GONG	05-23-2019
ECO DESCRIPTION		
SEE ECO		

REGAL-BELOIT CORPORATION (RBC) PROVIDES TECHNICAL ASSISTANCE TO OUR CUSTOMERS IN SEVERAL AREAS. SINCE RBC DOES NOT RECEIVE ALL DATA CONCERNING THE USE AND APPLICATION OF THE MOTOR, THE SUITABILITY OF THE MOTOR FOR THE APPLICATION MUST BE DETERMINED BY THE CUSTOMER.

DRAWN BY:	J.YAO	DATE:	07-07-2014
APPROVED BY:	J.ZHU	DATE:	07-07-2014
REFERENCE:	11915-023	THIRD ANGLE PROJECTION	

Regal Beloit America, Inc.	
DESCRIPTION	MODEL-RFHP-48FR OUTLINE
MATERIAL	PROCESS/FINISH
SIZE	DWG NO
C	ORM1056
SHEET	1

NAMEPLATE DATA:	EXTERNAL CONNECTION DIAGRAM
MODEL: F48J88A01 CUST. P/N: ORM1056 HP: 1/2 ROT: CCWLE RPM: 1050/4 SPD. TYPE: UF FRAME: 48 VOLTS: 115 PH: 1 AMPS: 5.7 HZ: 60 INS: B AMB: 40°C DUTY: AIR OVER ENCL: OPEN CAP.: 7.5 MFD/370V UL & CSA LOGO THERMALLY PROTECTED	<p>614131-088</p>

PERFORMANCE CURVE NO.	TORQUE @ 1050 RPM (25°C)	APPROVED SAMPLE	UL COMPONENT	CSA
C31505	37.5 OZ. FT.	97AC360B	FILE #	CLASS #
			CCN #	
			FILE #	
			PRGY2	260-0-0

--	--	--	--	--