

GENERAL INFORMATION:

SHAFT RUNOUT: .001[.03] T.I.R. PER INCH[25.4mm]
LENGTH OF EXTENSION.

END PLAY: .010[.25] TO .063[1.60]

BEARINGS: SLEEVE

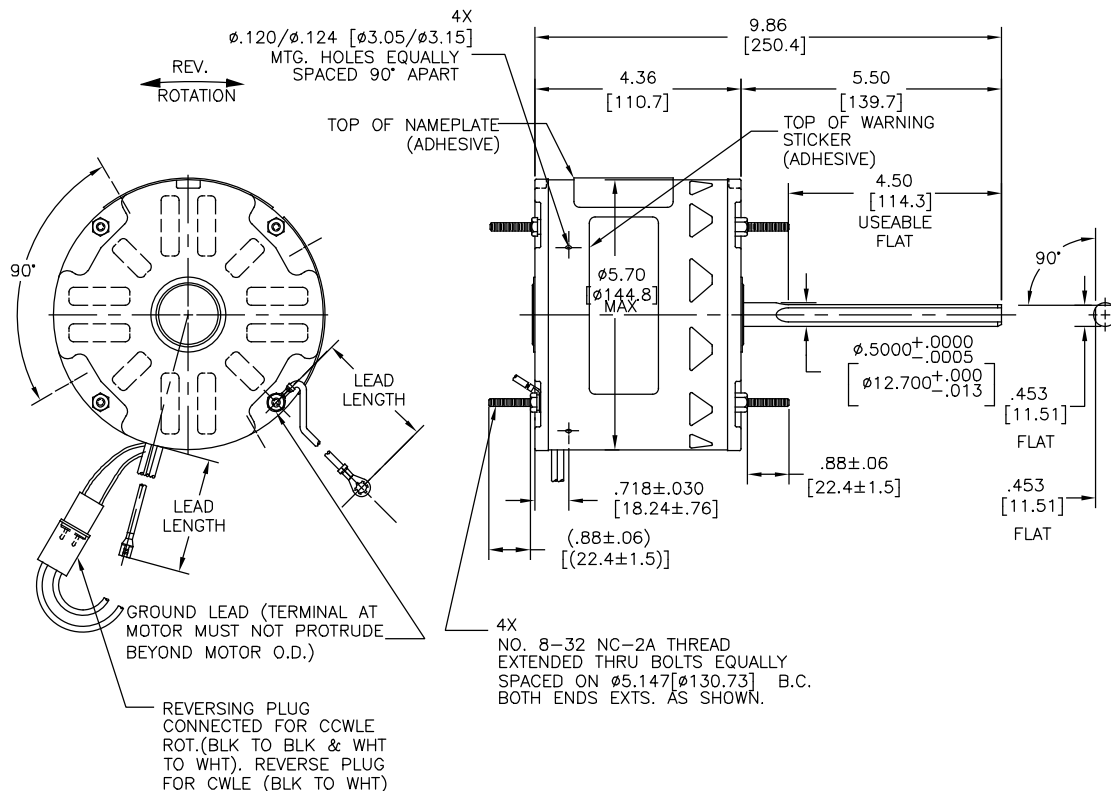
MOUNTING POSITION: VERTICAL SHAFT DOWN

ELECTRICAL DATA:

OVERLOAD PROTECTOR: AUTOMATIC RESET (T.I. 7AM 036)

LEADS: NO. 18 GA., .06[1.5] THK. PVC 105°C INSULATION.

GROUND LEAD: NO. 18 GA., .03[.8] THK. (GREEN) INSULATION.



NOTES:
4X SCREWS 615982-001 TO BE PUT IN A POLYBAG.

| NAMEPLATE DATA: | EXTERNAL CONNECTION DIAGRAM |
|--|--|
| MODEL NO.: F48SJ6L11 CUST. P/N: ORM1036 HP: 1/3 ROT: REVERSIBLE RPM: 1075 TYPE: UF FRAME: 48Y VOLTS: 208-230 PH: 1 AMPS: 2.2(2.8 MAX) HZ: 60 INS: B AMB: 60 °C DUTY: AIR OVER CAP.: 7.5 MFD/370 VAC ENCL: SEMI ENCL UL LOGO CSA LOGO THERMALLY PROTECTED | <p>SEP. CAP.</p> <p>BROWN</p> <p>BRN/WHT</p> <p>YELLOW</p> <p>BLACK</p> <p>BLK WHT</p> <p>BLK WHT</p> <p>CCWLE ROTATION</p> <p>BLK WHT</p> <p>WHT BLK</p> <p>CWLE ROTATION</p> <p>614131-115</p> |

| PERFORMANCE CURVE NO. | TORQUE @ 1075 RPM (25°C) | APPROVED SAMPLE | UL COMPONENT | | CSA | |
|-----------------------|--------------------------|-----------------|--------------|-------|---------|---------|
| | | | FILE # | CCN # | FILE # | CLASS # |
| C23483 | 32.6 OZ.FT. | EX11540 | E46412 | PRGY2 | LR43341 | 4211-01 |

| COLOR | LENGTH | TERMINAL OR STRIP LENGTH |
|-------------|-----------------------|--------------------------|
| BLACK/WHITE | 3.0/5.0 [76/127] | REVERSING PLUG |
| GREEN (GRD) | 12.0/13.0 [305/330] | #10 EYELET |
| BROWN | 72.0/76.0 [1829/1930] | .25 [6.4] FEMALE SPADE |
| BROWN/WHITE | 72.0/76.0 [1829/1930] | .25 [6.4] FEMALE SPADE |
| YELLOW | 48.0/52.0 [1219/1321] | .25 [6.4] FEMALE SPADE |
| BLACK | 48.0/52.0 [1219/1321] | .25 [6.4] FEMALE SPADE |

REGAL-BELOIT CORPORATION (RBC) PROVIDES TECHNICAL ASSISTANCE TO OUR CUSTOMERS IN SEVERAL AREAS. SINCE RBC DOES NOT RECEIVE ALL DATA CONCERNING THE USE AND APPLICATION OF THE MOTOR, THE SUITABILITY OF THE MOTOR FOR THE APPLICATION MUST BE DETERMINED BY THE CUSTOMER.

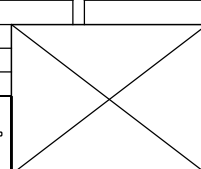
DIMENSIONS WITHOUT TOLERANCES ARE FOR REFERENCE ONLY.

| | |
|------------------|----------|
| MAIN FRAME - OLE | OPEN |
| END FRAME - OLE | OPEN |
| MAIN FRAME - LE | ENCLOSED |
| END FRAME - LE | ENCLOSED |

| CUSTOMER | DISTRIBUTION SERVICE |
|----------|----------------------|
| | |

| DRAWING REVISION | | DATE |
|----------------------------|-------------|------------|
| E | GELINE ZHAO | 05-23-2019 |
| ECO | KEYUN.GONG | 05-23-2019 |
| ECO DESCRIPTION SEE ECO | | |

REGAL-BELOIT CORPORATION (RBC) PROVIDES TECHNICAL ASSISTANCE TO OUR CUSTOMERS IN SEVERAL AREAS. SINCE RBC DOES NOT RECEIVE ALL DATA CONCERNING THE USE AND APPLICATION OF THE MOTOR, THE SUITABILITY OF THE MOTOR FOR THE APPLICATION MUST BE DETERMINED BY THE CUSTOMER.



| ENCLOSURE | |
|------------------------|------------------|
| DRAWN BY: D.ZHANG | DATE: 05-19-2011 |
| APPROVED BY: C.ZHOU | DATE: 05-19-2011 |
| PROCESS/FINISH | |
| THIRD ANGLE PROJECTION | |

| REGAL BELOIT America, Inc. | |
|----------------------------|-------------------------|
| DESCRIPTION | MODEL-RFHP-48FR OUTLINE |
| MATERIAL | |
| SIZE | DWG NO. ORM1036 |
| SHEET | 1 |