

4

3

2

1

REV	ECO	REV BY	DATE	APPD	DATE
A	0010209	C. CARRILLO	10-30-2009	C. CONTRERAS	10-30-2009

GENERAL INFORMATION:

SHAFT RUNOUT: .001 T.I.R. PER INCH LENGTH OF EXTENSION.

BEARINGS: BALL

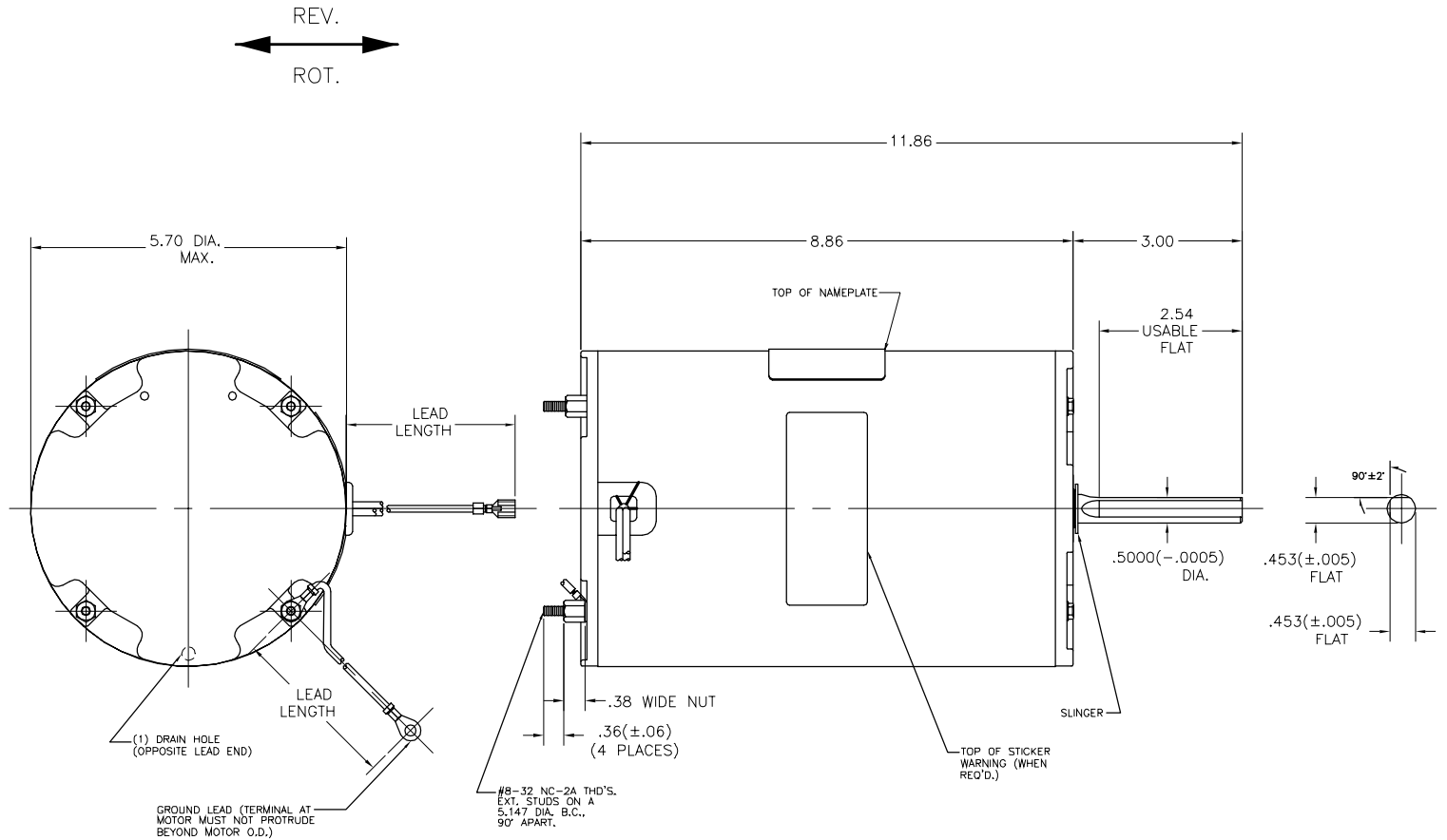
MOUNTING POSITION: VERTICAL SHAFT-DOWN

ELECTRICAL DATA:

OVERLOAD PROTECTOR: AUTOMATIC RESET (T.I. MWJ57JR)

LEADS: NO. 16 GA., .06 THK., EPDM 125°C INSUL.

GROUND LEAD: NO. 16 GA., .03 THK., (GREEN) INSUL.



NAMEPLATE DATA: EXTERNAL CONNECTION DIAGRAM

MODEL: P48SW6V1	
CUST. P/N: OCA3076	
HP: 3/4	
ROT: REVERSIBLE	
RPM: 1140	
TYPE: UP	
FRAME: 48Y	
VOLTS: 208-230	
PH: 3	
AMPS: 3.8	
HZ: 60	
INS: B	
AMB: °C 60	
DUTY: AIR OVER	
CODE: -	
CAP.: -	
ENCL: ENCLOSED	
UL LOGO	
CSA LOGO	
THERMALLY PROTECTED	
MWJ57JR	
614131-147	

GREEN(GRD)	60/62	#10 EYELET
BLACK(L1)	60/62	.25 FEMALE SPADE
YELLOW(L2)	60/62	.25 FEMALE SPADE
BLUE(L3)	60/62	.25 FEMALE SPADE

COLOR	LENGTH	TERMINAL OR STRIP LENGTH
LEAD DATA		

MAIN FRAME - OLE	ENCLOSED
END FRAME - OLE	ENCLOSED W/ DRAIN HOLE
MAIN FRAME - LE	ENCLOSED
END FRAME - LE	ENCLOSED
ENCLOSURE	

CUSTOMER	DISTRIBUTION SERVICES
----------	-----------------------

<p>PERFORMANCE CURVE NO. C30273</p> <p>TORQUE @1120 RPM (25°C) 84.0 OZ. FT.</p> <p>APPROVED SAMPLE 89AC020A</p>	<p>UL COMPONENT FILE # E46412</p> <p>CCN # PRGY2</p> <p>CSA FILE # LR43341</p> <p>CLASS # 260-φ-0</p>

A.O. SMITH PROVIDES TECHNICAL ASSISTANCE TO OUR CUSTOMERS IN SEVERAL AREAS. SINCE A.O. SMITH DOES NOT RECEIVE ALL DATA CONCERNING THE USE AND APPLICATION OF THE MOTOR, THE SUITABILITY OF THE MOTOR FOR THE APPLICATION MUST BE DETERMINED BY THE CUSTOMER.

DIMENSIONS WITHOUT TOLERANCES ARE FOR REFERENCE ONLY.

DR BY: C. CARRILLO	10-30-2009
APPD: C. CONTRERAS	10-30-2009
THIRD ANGLE PROJECTION	EDS DATE EDS DATE FORMAT REV F
<p>CONFIDENTIAL: THIS DRAWING AND ITS INFORMATION ARE THE EXCLUSIVE AND CONFIDENTIAL PROPERTY OF A.O. SMITH CORP. AND ARE NOT TO BE DISCLOSED, DUPLICATED, DISTRIBUTED OR OTHERWISE USED WITHOUT THE WRITTEN CONSENT OF A.O. SMITH CORP.</p> <p>-ALL RIGHTS RESERVED. ASME Y14.5M 1994</p>	

<p>ELECTRICAL PRODUCTS COMPANY A DIVISION OF A. O. SMITH CORPORATION</p>	
DESCRIPTION	
OUTLINE	
SIZE C	DWG NO OCA3076
SCALE NONE	SHEET 1

4

3

2

1

4

3

2

1

REVISION:	ECO	REVISADO POR:	FECHA:	APROBADO POR:	FECHA:
A	0010209	C. CARRILLO	10-30-2009	C. CONTRERAS	10-30-2009

INFORMACION GENERAL:

OSCILACION DE FLECHA: -.001 T.I.R. PER INCH LENGTH OF EXTENSION.

BALEROS: - BALL

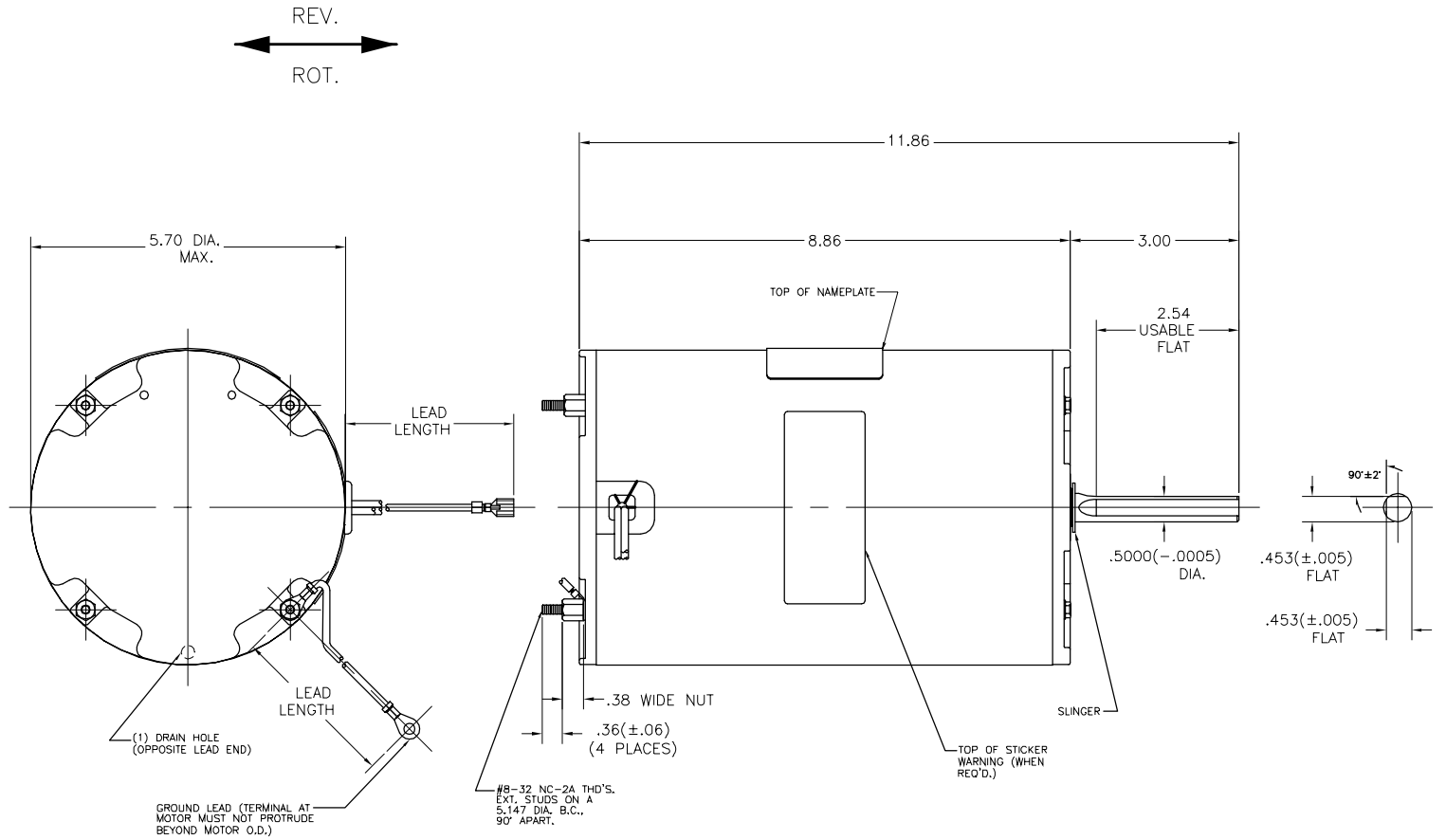
POSICION DEL MONTAJE: - VERTICAL SHAFT-DOWN

INFORMACION ELECTRICA:

PROTECTOR DE SOBRECARGA: - AUTOMATIC RESET (T.I. MWJ57JR)

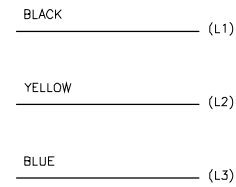
CABLES: -NO. 16 GA., .06 THK., EPDM 125°C INSUL.

CABLE DE TIERRA: -NO. 16 GA., .03 THK., (GREEN) INSUL.



INFORMACION DE ETIQUETA:	DIAGRAMA DE CONEXION EXTRNA
--------------------------	-----------------------------

MODEL: P48SW6V1
 CUST. P/N: OCA3076
 HP: 3/4
 ROT: REVERSIBLE
 RPM: 1140
 TYPE: UP
 FRAME: 48Y
 VOLTS: 208-230
 PH: 3
 AMPS: 3.8
 HZ: 60
 INS: B
 AMB: °C 60
 DUTY: AIR OVER
 CODE: -
 CAP.: -
 ENCL: ENCLOSED
 UL LOGO
 CSA LOGO
 THERMALLY PROTECTED
 MWJ57JR



614131-147

GREEN(GRD)	60/62	#10 EYELET
BLACK(L1)	60/62	.25 FEMALE SPADE
YELLOW(L2)	60/62	.25 FEMALE SPADE
BLUE(L3)	60/62	.25 FEMALE SPADE

COLOR	LENGTH	TERMINAL OR STRIP LENGTH
GREEN	60/62	#10 EYELET
BLACK	60/62	.25 FEMALE SPADE
YELLOW	60/62	.25 FEMALE SPADE
BLUE	60/62	.25 FEMALE SPADE

CARCASA - LOC	ENCLOSED
TAPA - LOC	ENCLOSED W/ DRAIN HOLE
CARCASA - LC	ENCLOSED
TAPA - LC	ENCLOSED

CLIENTE	DISTRIBUTION SERVICES
---------	-----------------------

CURVAS DE FUNCIONAMIENTO	TORSION @ 1120 RPM (25°C)	MUESTRA APROBADA	COMPONENTE UL	CSA
C30273	84.0 OZ. FT.	89AC020A	#ARCHIVO PRGY2 LR43341	CLASE # 260-0-0

CARACTERISTICAS DE GEOMETRIA Y SIMBOLOS
 □ PLANICIDAD
 - RECTITUD
 < ANGULARIDAD
 ⊥ PERPENDICULARIDAD (A ESCUADRA)
 // PARALELISMO
 ○ REDONDEZ (CIRCULARIDAD)
 ∅ CILINDRICIDAD
 △ PERFIL DE CUALQUIER SUPERFICIE
 ∇ PERFIL DE CUALQUIER LINEA
 / VARIACION
 ⊕ POSICION REAL
 ⊙ CONCENTRICIDAD
 = SIMETRIA

A.O. SMITH PROVEE ASISTENCIA TECNICA A NUESTROS CLIENTES EN VARIAS AREAS. DESDE QUE A.O. SMITH NO RECIBE TODOS LOS DATOS EN RELACION AL USO Y A LA APLICACION DEL MOTOR, LA APLICACION ADECUADA DEL MOTOR DEBE SER DETERMINADA POR EL CLIENTE.

DIMENSIONES SIN TOLERANCIA SON DE REFERENCIA SOLAMENTE

DIBUJADO POR: C. CARRILLO 10-30-2009
 APROBADO POR: C. CONTRERAS 10-30-2009
 TERCER ANGULO DE PROYECCION
 CONFIDENCIAL: ESTE DIBUJO Y SU INFORMACION SON PROPIEDAD DE USO EXCLUSIVO Y CONFIDENCIAL DE A.O. SMITH CORP. Y NO DEBERAN SER REVELADOS, DUPLICADOS, DISTRIBUIDOS O USARSE DE OTRA MANERA SIN EL CONSENTIMIENTO ESCRITO DE A.O. SMITH CORP. -TODOS LOS DERECHOS RESERVADOS. ASME Y14.5M 1994

AC Smith **ELECTRICAL PRODUCTS COMPANY**
 Innovation has a name. A DIVISION OF A. O. SMITH CORPORATION
 DESCRIPCION: OUTLINE
 TAMAÑO: C NUMERO DE DIBUJO: OCA3076
 ESCALA: NONE HOJA: 1

4

3

2

1

4

3

2

1

总技术要求:

轴跳动: .001 T.I.R. PER INCH LENGTH OF EXTENSION.

轴承: BALL

安装位置: VERTICAL SHAFT-DOWN

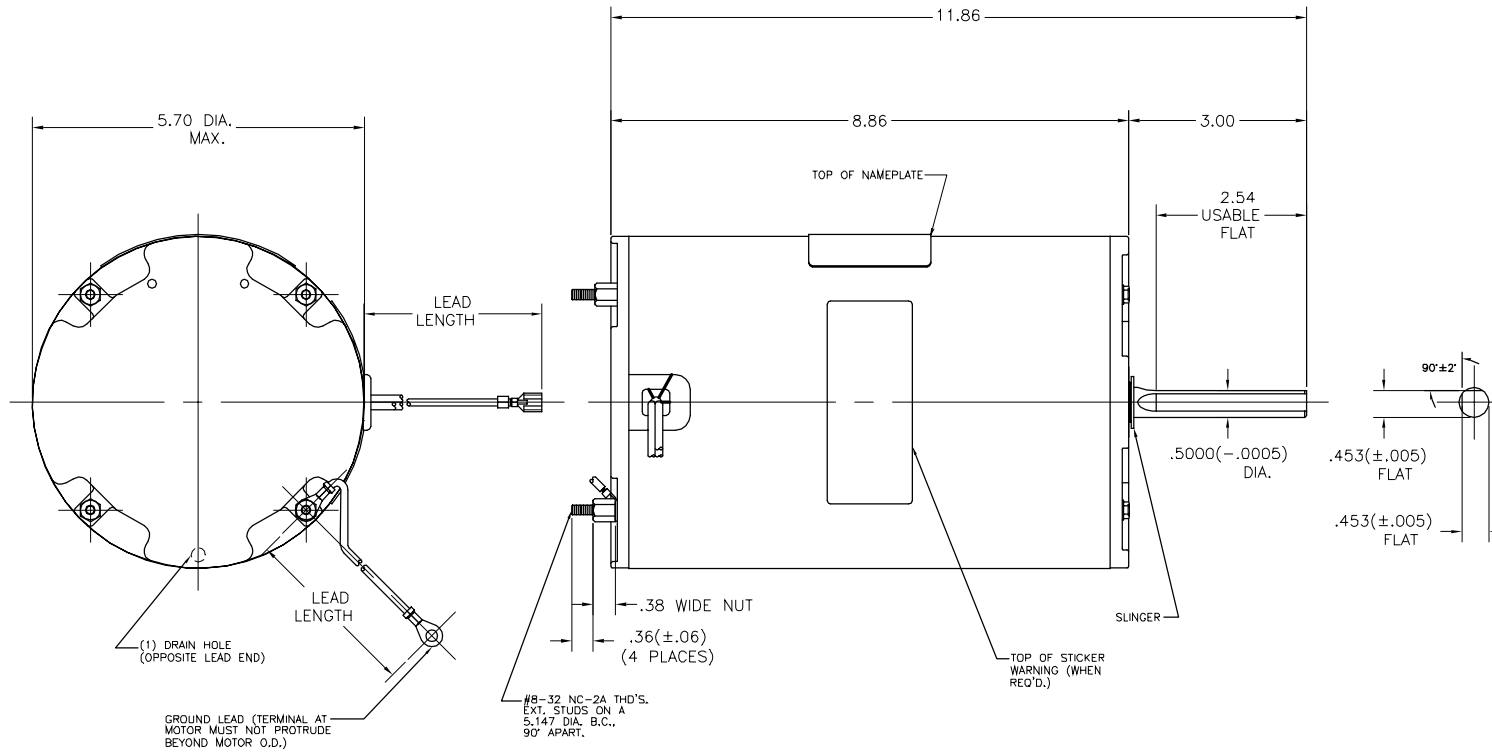
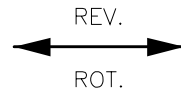
电气数据:

过载保护: AUTOMATIC RESET (T.I. MWJ57JR)

引线: NO. 16 GA., .06 THK., EPDM 125°C INSUL.

接地线: NO. 16 GA., .03 THK., (GREEN) INSUL.

??	ECO	??	??	??	??
A	0010209	C. CARRILLO	10-30-2009	C. CONTRERAS	10-30-2009



铭牌数据	外部数据线
MODEL: P48SW6V1 CUST. P/N: OCA3076 HP: 3/4 ROT: REVERSIBLE RPM: 1140 TYPE: UP FRAME: 48Y VOLTS: 208-230 PH: 3 AMPS: 3.8 HZ: 60 INS: B AMB: °C 60 DUTY: AIR OVER CODE: - CAP.: - ENCL: ENCLOSED UL LOGO CSA LOGO THERMALLY PROTECTED MWJ57JR	BLACK (L1) YELLOW (L2) BLUE (L3)

GREEN(GRD)	60/62	#10 EYELET
BLACK(L1)	60/62	.25 FEMALE SPADE
YELLOW(L2)	60/62	.25 FEMALE SPADE
BLUE(L3)	60/62	.25 FEMALE SPADE

无引线端机壳	ENCLOSED
无引线端端盖	ENCLOSED W/DRAIN HOLE
有引线端机壳	ENCLOSED
有引线端端盖	ENCLOSED

用户	DISTRIBUTION SERVICES
----	-----------------------


性能曲线编号	转矩 @ 120 RPM (25°C)	批准样品	UL部件		CSA	
文件号	??	文件号	??	文件号	??	
C30273	84.0 OZ. FT.	89AC020A	E46412	PRGY2	LR43341 260-0-0	

COLOR	LENGTH	TERMINAL OR STRIP LENGTH
颜色	长度	端子或剥线长度
LEAD DATA 引线数据		

□???
 -???
 <???
 |???
 //???
 ○??
 /??
 △??
 ^??
 †??
 ⊕??
 ⊙??
 =??

A.O.SMITH?????
 ??????A.O.SMITH
 ??????
 ??????
 ??????
 ??????

| | | |
|-------|-----------------------------|-------------------|
| ??: | C. CARRILLO | 10-30-2009 |
| ??: | C. CONTRERAS | 10-30-2009 |
| ????? | ⊕ | EDS DATE
????? |
| ??: | ?????????A.O.SMITH????? | |
| ??: | ??A.O.SMITH???????????????? | |
| ??: | ?????--???? | |


ELECTRICAL PRODUCTS COMPANY
 A DIVISION OF A. O. SMITH CORPORATION

OUTLINE

| | |
|------|---------|
| C | OCA3076 |
| NONE | 1 |

ASME Y14.5M 1994

4

3

2

1