

GENERAL INFORMATION:

SHAFT RUNOUT: .001[.03] T.I.R. PER INCH LENGTH OF EXTENSION

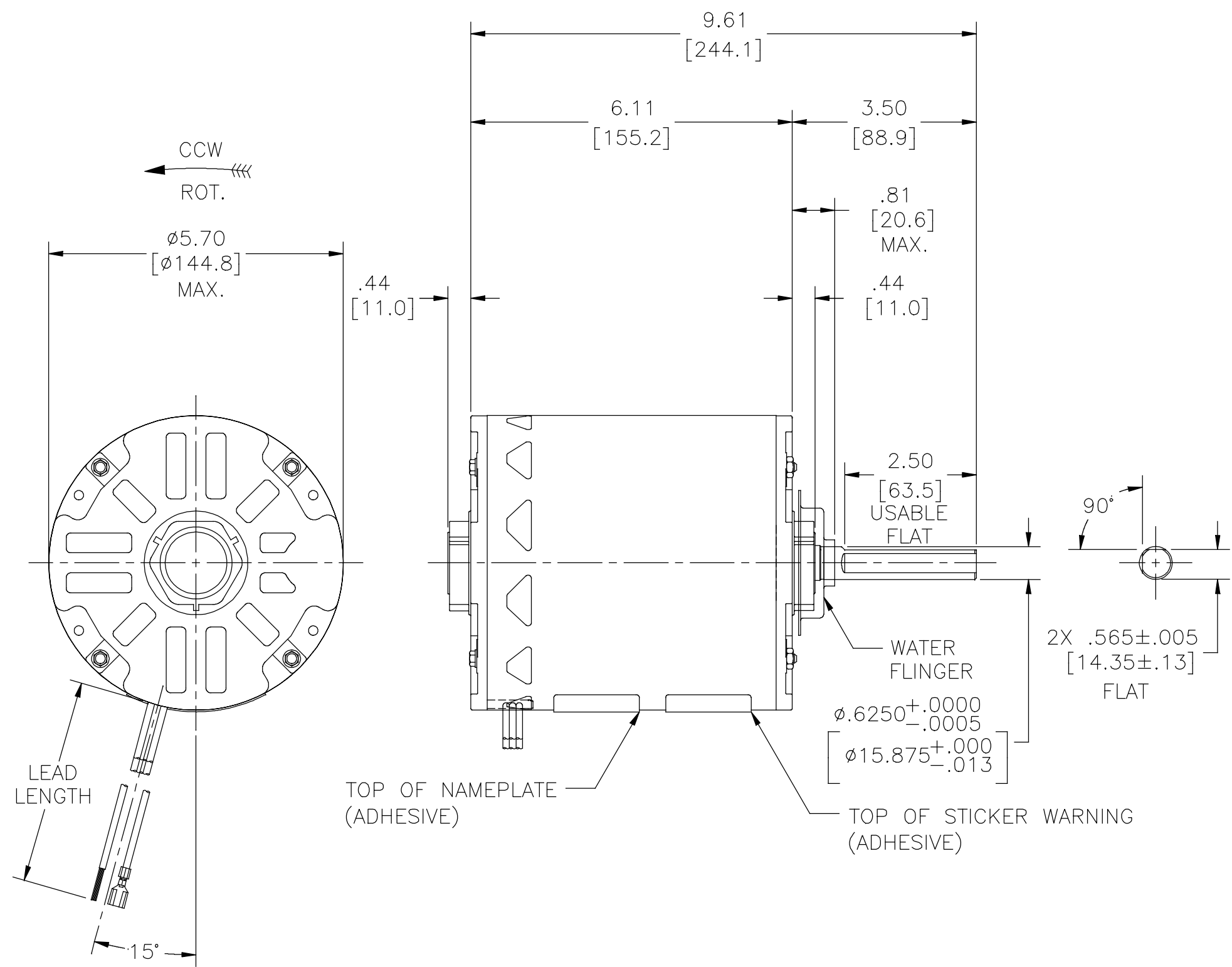
BEARINGS: BALL

MOUNTING POSITION: VERTICAL SHAFT UP

ELECTRICAL DATA:

OVERLOAD PROTECTOR: AUTOMATIC RESET (SENSATA 7AM 036)

LEADS: NO. 16 & 18 GA., .06 [1.5] THK. PVC 105° C INSUL.



NAMEPLATE DATA:	EXTERNAL CONNECTION DIAGRAM
MODEL NO.: F48F07A01 CUST. P/N: OAD1106 HP: 1.0 ROT.: CCWLE RPM: 1075 TYPE: UF FRAME: 48Y VOLTS: 208-230/460 PH: 1 AMPS: 6.2/3.1 HZ: 60 INS.: B AMB.: 40° C DUTY: AIR OVER CAP.: 15 MFD/370 V ENCL: SEMI-ENCL. UL LOGO CSA LOGO THERMALLY PROTECTED	<p>SEP.CAP. RED YELLOW ORANGE WHITE PURPLE BROWN HIGH VOLTS</p> <p>SEP.CAP. RED YELLOW WHITE ORANGE BROWN PURPLE LOW VOLTS</p>

COLOR	WIRE SIZE	LENGTH	TERMINAL OR STRIP LENGTH
PURPLE	16 GA.	110.0/114.0 [2794/2896]	.60 [15.2] SKIN
WHITE	18 GA.	12.0/14.0 [305/356]	.25 [6.4] FEMALE SPADE
RED	18 GA.	12.0/14.0 [305/356]	.25 [6.4] FEMALE SPADE
YELLOW	16 GA.	12.0/14.0 [305/356]	.25 [6.4] FEMALE SPADE
ORANGE	18 GA.	12.0/14.0 [305/356]	.60 [15.2] SKIN
BROWN	18 GA.	12.0/14.0 [305/356]	.60 [15.2] SKIN

REGAL-BELOIT CORPORATION (RBC) PROVIDES TECHNICAL ASSISTANCE TO OUR CUSTOMERS IN SEVERAL AREAS. SINCE RBC DOES NOT RECEIVE ALL DATA CONCERNING THE USE AND APPLICATION OF THE MOTOR, THE SUITABILITY OF THE MOTOR FOR THE APPLICATION MUST BE DETERMINED BY THE CUSTOMER.

DIMENSIONS WITHOUT TOLERANCES ARE FOR REFERENCE ONLY.

MAIN FRAME - OLE	ENCLOSED
END FRAME - OLE	ENCLOSED
MAIN FRAME - LE	OPEN
END FRAME - LE	OPEN

CUSTOMER	DISTRIBUTION SERVICE
----------	----------------------

PERFORMANCE CURVE NO.	TORQUE @ 1075 RPM (25°C)	APPROVED SAMPLE	UL COMPONENT FILE #	CCN #	CSA FILE #	CLASS #
C31137	74.9 OZ. FT.	96AC283A	E46412	PRGY2	LR43341	4211-01

DRAWING REVISION C ECO-0149758 REDRAWN FROM 12052-003	REVISION BY J. RUPERT	DATE 07-27-2018	REGAL™ Regal Beloit America, Inc.
	APPROVED BY J. RUPERT	DATE 07-27-2018	
COPYRIGHT REGAL-BELOIT AMERICA, INC. ALL RIGHTS RESERVED. PROPRIETARY AND CONFIDENTIAL INFORMATION - THIS DOCUMENT IS THE PROPERTY OF REGAL-BELOIT AMERICA, INC. (OWNER) AND CONTAINS OWNER'S PROPRIETARY INFORMATION. ANY PERSON, CORPORATION OR OTHER FIRM RECEIVING IT IS DEEMED, BY RECEIVING IT, TO AGREE THAT IT, AND/OR ANY PART OF IT, SHALL NOT BE DISCLOSED TO ANY PERSON, CORPORATION OR OTHER ENTITY, DUPLICATED, AND/OR USED, EXCEPT AS EXPRESSLY APPROVED IN WRITING IN ADVANCE BY OWNER. THIS DOCUMENT SHALL BE RETURNED TO OWNER UPON REQUEST. IT MAY BE SUBJECT TO CERTAIN RESTRICTIONS UNDER APPLICABLE EXPORT CONTROL LAWS AND REGULATIONS.			DRAWN BY: J. RUPERT DATE: 07-27-2018 APPROVED BY: J. RUPERT DATE: 07-27-2018 PROCESS/FINISH
THIRD ANGLE PROJECTION		SIZE DWG NO C OAD1106	SHEET 1